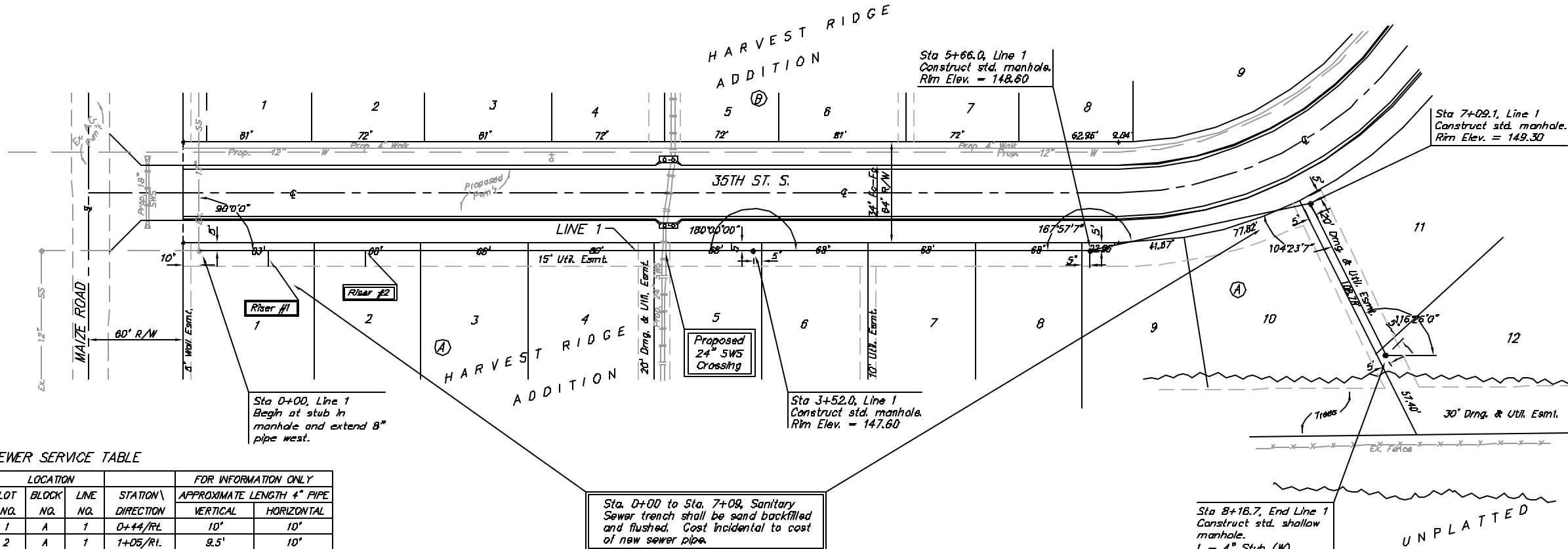


Benchmarks:

BM #1: Small RR spike in 2nd PP north of K-42 Highway, west side of Maize
Elev. = 143.61 (City Datum)

BM #2: Small RR spike in PP east of East 1/4 Corner (G)
Elev. = 147.00 (City Datum)

BM #3: "□" Top Headwall southeast corner K-42 Highway and Maize (County BM with City Datum)
Elev. = 144.04 (City Datum)

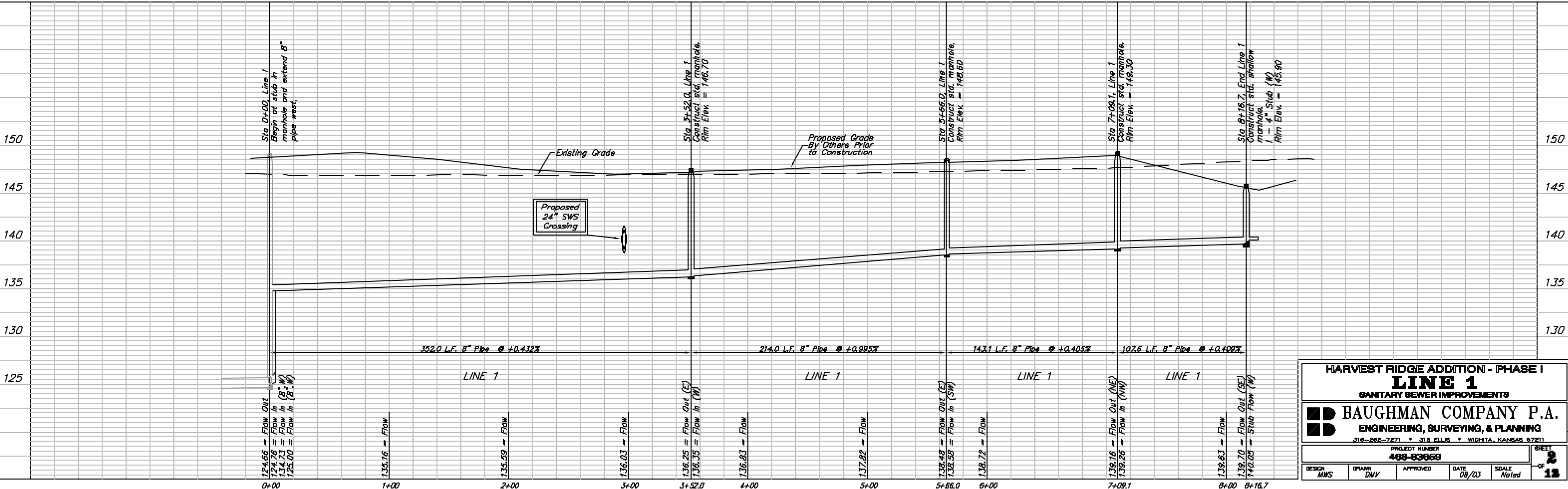


Scale: 1" = 40' Horizontal
1" = 5' Vertical
- - - Iron

SEWER SERVICE TABLE

NUMBER	TYPE	LOCATION			STATION \ DIRECTION	FOR INFORMATION ONLY	
		LOT NO.	BLOCK NO.	LINE NO.		APPROXIMATE LENGTH 4" PIPE	VERTICAL
1	8" x 4" Tee Saddle	1	A	1	0+44/R/L	10'	10'
2	8" x 4" Tee Saddle	2	A	1	1+05/R/L	9.5'	10'

NOTE: Vertical Riser Pipe shall be extended to 2' minimum above ground water elevation and 4' maximum below proposed ground elevation.



HARVEST RIDGE ADDITION - PHASE I
LINE 1
SANITARY SEWER IMPROVEMENTS

BAUGHMAN COMPANY P.A.
ENGINEERING, SURVEYING, & PLANNING
316-882-7271 • 318 ELLIS • WICHITA, KANSAS 67211

PROJECT NUMBER: **488-83068**

DESIGN: MWS DRAWN: DNV APPROVED: [Signature] DATE: 08/03 SCALE: Noted

SHEET: **13** of 13