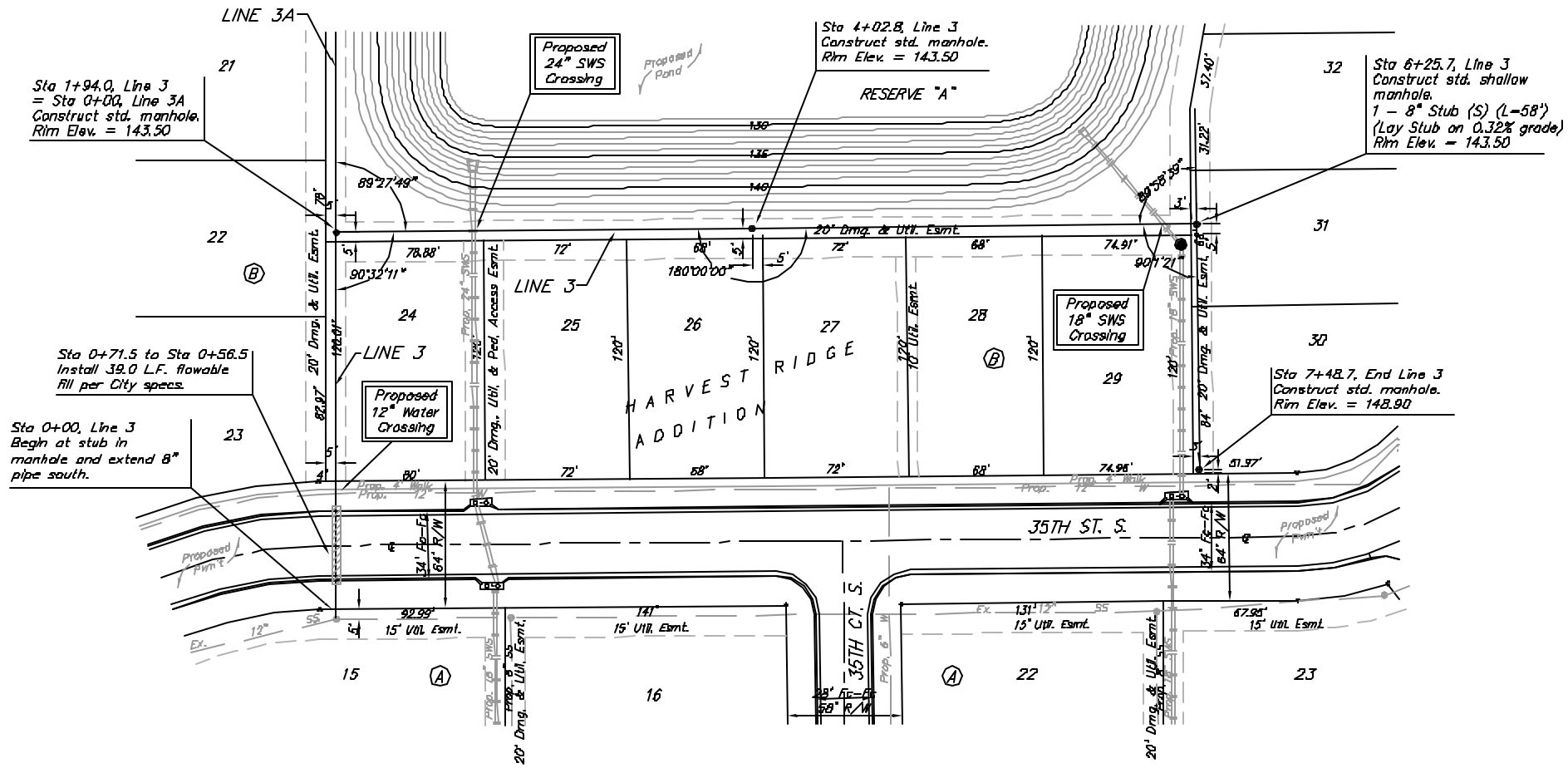


Benchmarks:

BM #1: Small RR spike in 2nd PP north of K-42 Highway, west side of Maize
Elev. = 143.61 (City Datum)

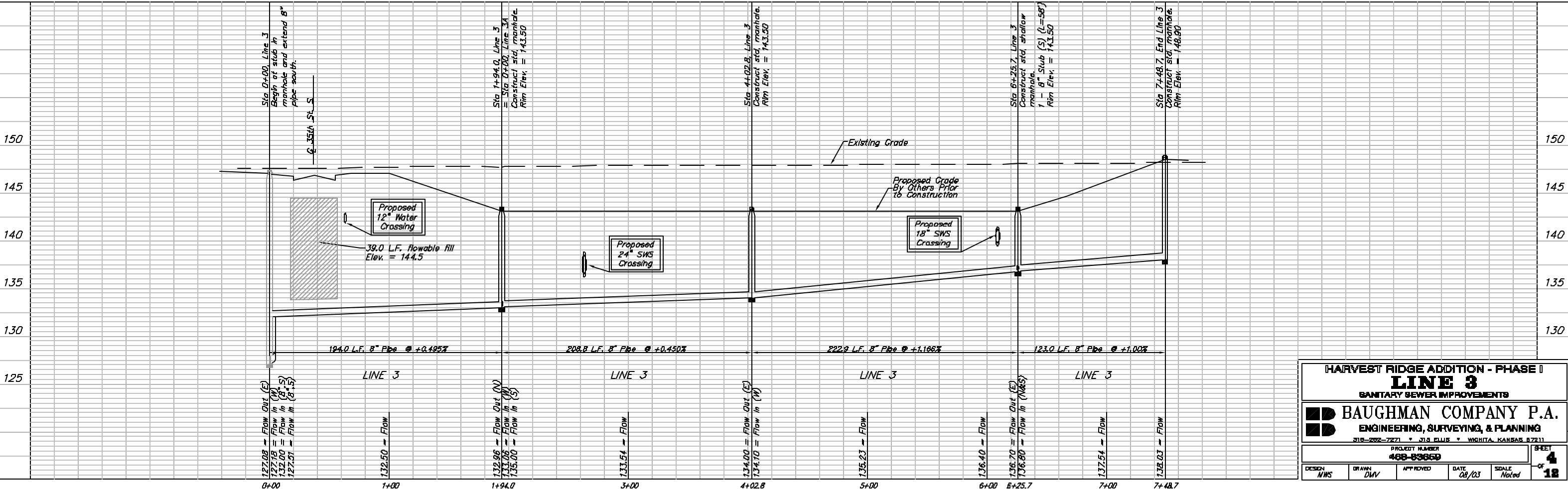
BM #2: Small RR spike in PP east of East 1/4 Corner (G)
Elev. = 147.00 (City Datum)

BM #3: "□" Top Headwall southeast corner K-42 Highway and Maize (County BM with City Datum)
Elev. = 144.04 (City Datum)



Scale: 1" = 40' Horizontal
1" = 5' Vertical
-- Iron

Note: 58' Long 8" Stub to be bid as 1 - 8" Stub.



HARVEST RIDGE ADDITION - PHASE II				
LINE 3				
SANITARY SEWER IMPROVEMENTS				
BAUGHMAN COMPANY P.A.				
ENGINEERING, SURVEYING, & PLANNING				
315-222-7271 • 315 ELITE • WICHITA, KANSAS 67211				
PROJECT NUMBER 468-8366D		SHEET 4		
DESIGN NWS	DRAWN DVA	APPROVED	DATE 08/03	SCALE Noted

03-03-2586