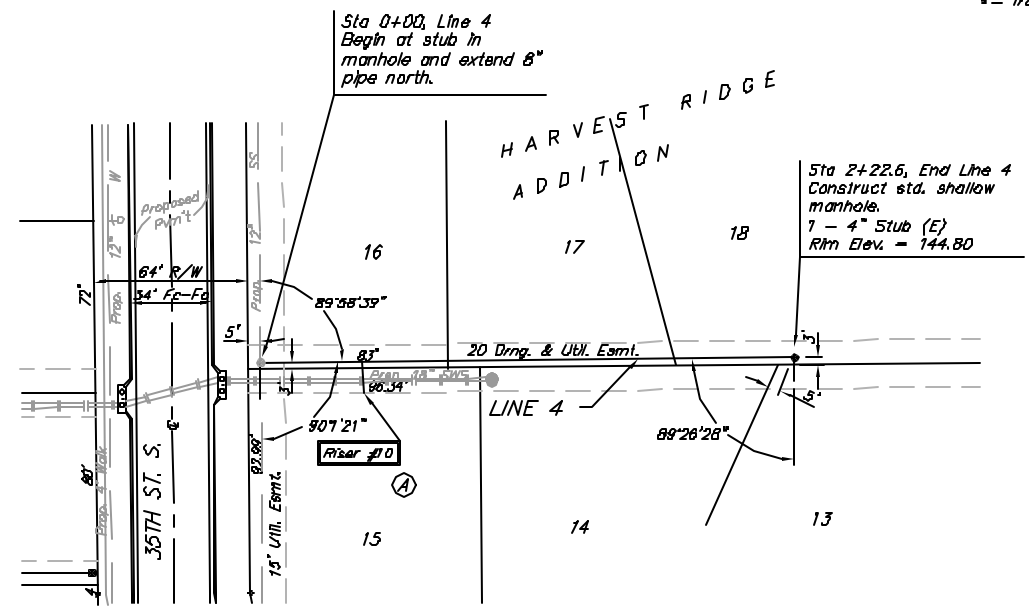
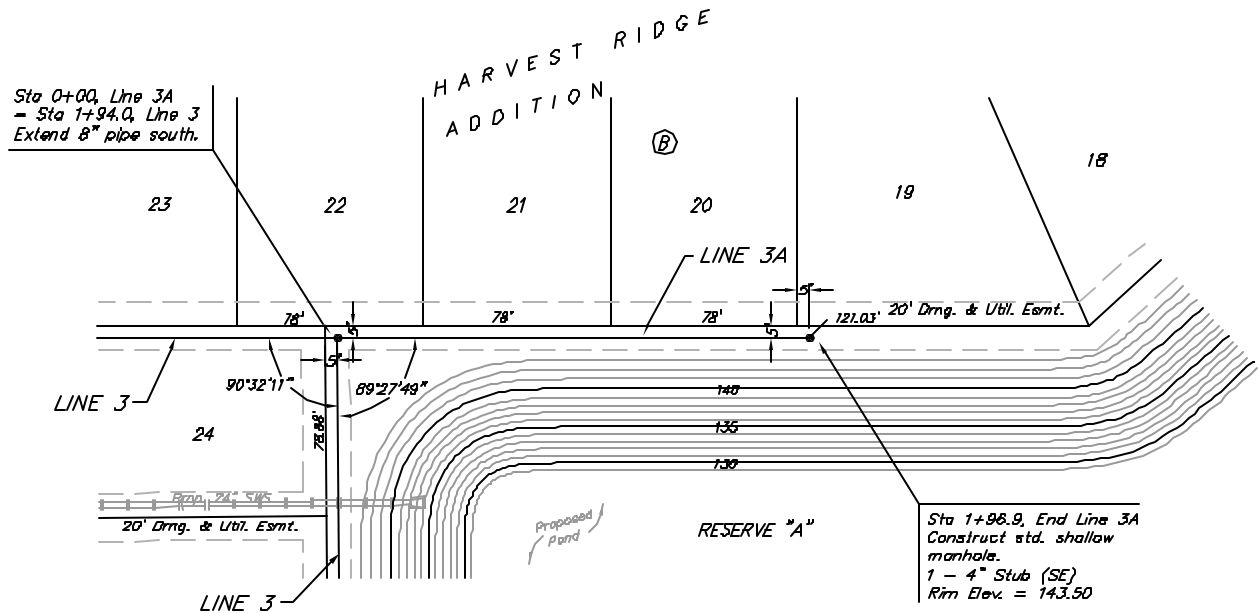


Benchmarks:

BM #1: Small RR spike in 2nd PP north of K-42 Highway, west side of Maize
Elev. = 143.61 (City Datum)

BM #2: Small RR spike in PP east of East 1/4 Corner (G)
Elev. = 147.00 (City Datum)

BM #3: "□" Top Headwall southeast corner K-42 Highway and Maize (County BM with City Datum)
Elev. = 144.04 (City Datum)

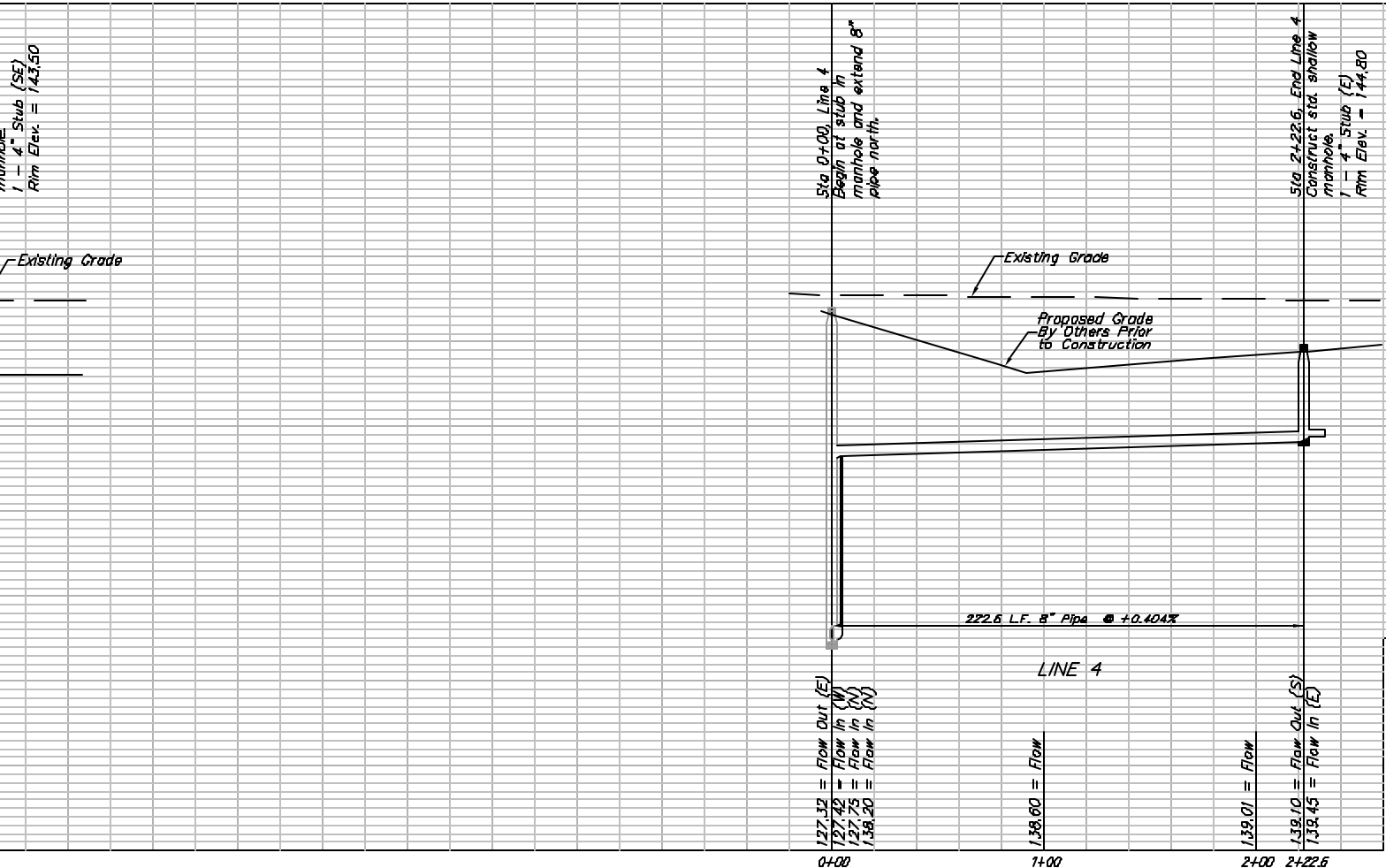
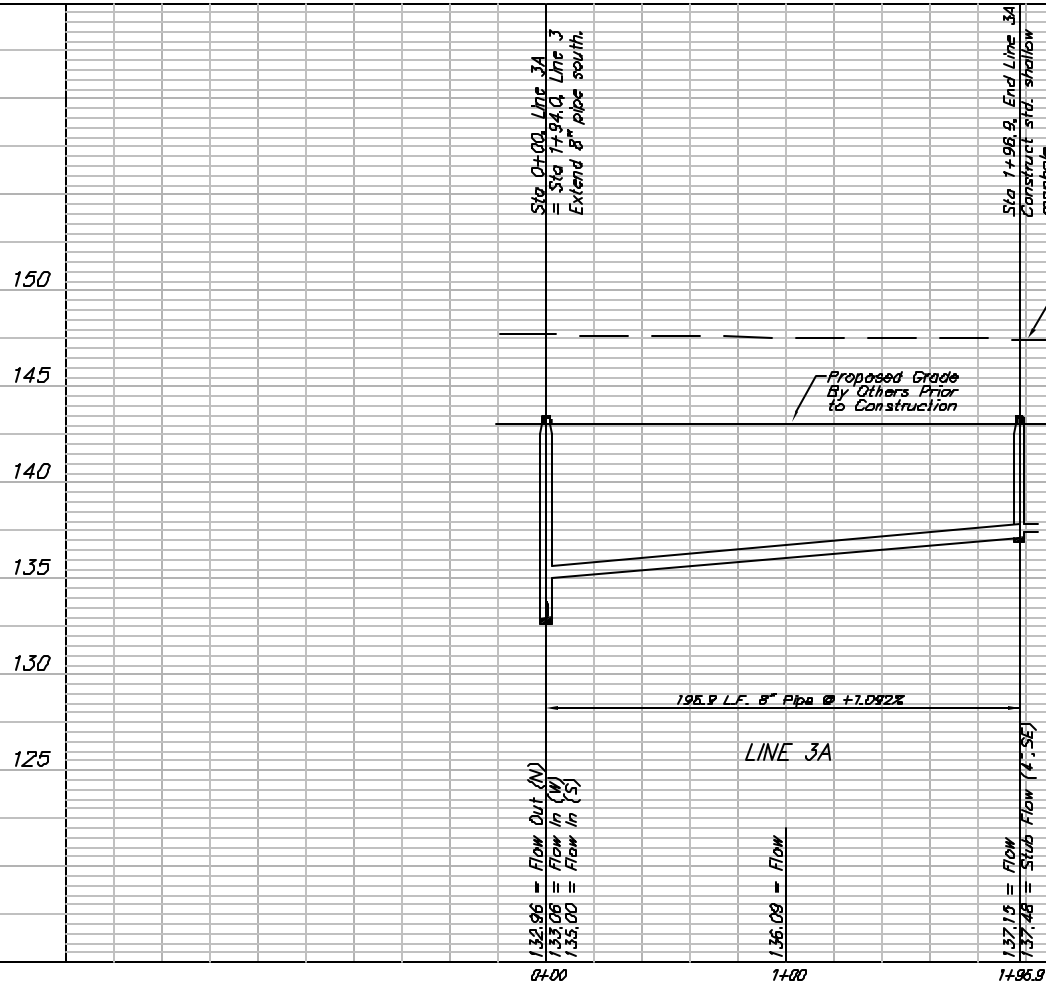


Scale: 1" = 40' Horizontal
1" = 5' Vertical
= Iron

SEWER SERVICE TABLE

NUMBER	TYPE	LOCATION				FOR INFORMATION ONLY	
		LOT NO.	BLOCK NO.	LINE NO.	STATION \ DIRECTION	APPROXIMATE LENGTH 4" PIPE VERTICAL	HORIZONTAL
10	8" x 4" Tee Saddle	15	A	4	0+43/RE	3'	13'

NOTE: Vertical Riser Pipe shall be extended to 2' minimum above ground water elevation and 4' maximum below proposed ground elevation.



HARVEST RIDGE ADDITION - PHASE II
LINES 3A & 4
 SANITARY SEWER IMPROVEMENTS

BAUGHMAN COMPANY P.A.
 ENGINEERING, SURVEYING, & PLANNING
 318-282-7271 • 318 CLUB • WICHITA, KANSAS 67211

PROJECT NUMBER: **488-83869**

DESIGN: NWS DRAWN: DMV APPROVED: _____ DATE: 08/03 SCALE: Noted

SHEET: **5** OF **18**