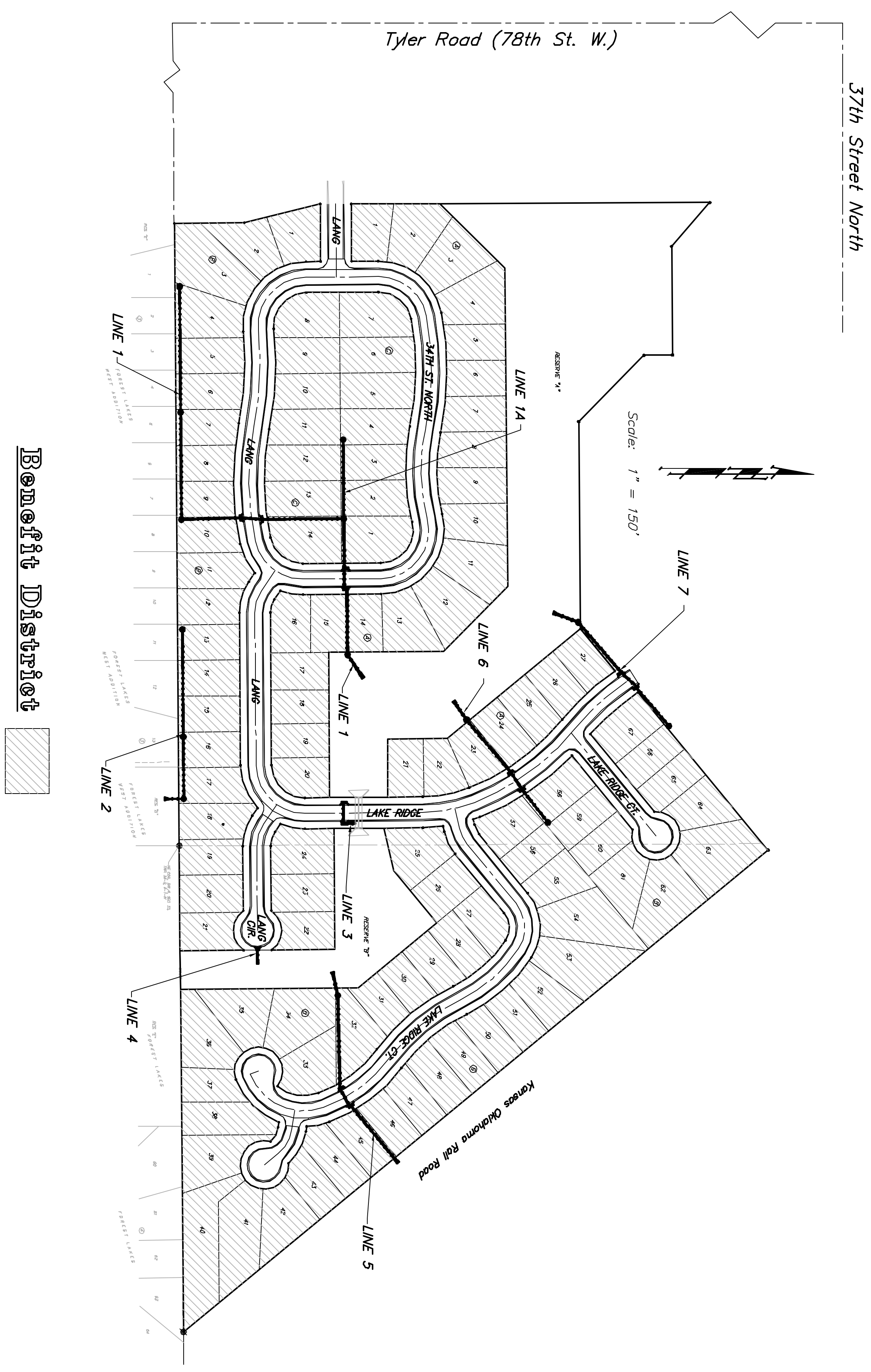


GENERAL NOTES:

1. Contractor will be required to provide notice to utility companies a minimum of twenty-four (24) hours prior to any excavation, as follows:
 Kansas One-Call 687-2470
 The Contractor must notify the following in case of an emergency:
 Cox Communications 262-4270
 Kansas Gas Service 1-888-482-4950
 Western Energy 383-8650
 Aquilo Energy 1-800-303-0357
 SGC 268-2245
 City of Wichita Water Dept. 268-4563
 City of Wichita Sewer Maint. 268-4024
 City of Wichita Storm Sewer Maint. 268-4090
 City of Wichita Traffic Maint. 268-4024
 City of Wichita Public Works 268-4024
 Southern Star Pipeline Co. 1-800-529-6600
 Phillips Pipeline Co. 1-800-766-8230
2. Utility service lines, poles, valve boxes, meters, and elevations are to be adjusted as necessary by others prior to construction unless the plans specifically call for their adjustment by the Contractor or unless the plans specifically identify a utility to be adjusted by its owner during construction. Existing utilities and their location, as shown on the plans, represent the best information obtainable for design. The Contractor will be required to work around existing utilities within the right-of-way which do not conflict with proposed construction.
3. Rubble from the removal of miscellaneous structures and excess excavation which is to be wasted shall be disposed of in accordance with the applicable local, state, and federal laws as required by the Contractor. The Contractor shall be responsible for the Contractor's suitability, appearance and site location. Locations, in the opinion of the Engineer, that will leave an unsightly appearance will not be approved. All disposal sites must be approved by the Kansas Department of Health and Environment. Material either stockpiled or disposed of in a road plan would require a Kansas State Board of Agriculture permit. Any material dumped in waters of the State shall be in accordance with the rules and regulations of Engineers from the regulation. Any material dumped or stockpiled beyond approved construction limits would require additional archaeological investigations unless buried in a previously approved borrow location.
4. Trees and shrubs in public right-of-way which are in direct conflict with proposed new construction shall be removed by the Contractor with the Engineer's approval. Trees and shrubs which are not in direct conflict with proposed new construction shall be saved and protected from damage.
5. The Contractor shall give all property owners and/or tenants of developed property adjoining the construction of this project a minimum of ten (10) days advance notice prior to start of construction.
6. The Contractor shall be responsible for preserving property irons. The Contractor will be required to re-establish any property irons which are damaged or destroyed by his construction operations. Such irons shall be re-established by a licensed land surveyor in accordance with state laws.
7. All existing and proposed erosion control measures including silt fencing, erosion control mat, straw bales, inlet barriers, and curbs, entrance shall be maintained throughout construction by the contractor and until the project is completed. The City Engineer or the site engineer shall complete weekly reports on the status of erosion control measures. The contractor shall be required to comply with maintenance and/or replacement of erosion control measures as determined by the on-site engineer until project is accepted by City of Wichita. Maintenance and/or replacement of erosion control measures to be paid by U.S. bid item "Erosion Control BMP's."
8. All access excavation shall remain on-site and shall be stockpiled or spread at a location determined by the engineer.
9. All areas disturbed during construction outside of street R/W shall be seeded at 300 lbs./acre with Ryegrass immediately following construction in that area, unless otherwise noted. Contractor shall prepare good per City Specifications.
10. Contractor shall coordinate construction of this project with City of Wichita, Storm Water Drain #218, Project #468-83727.
11. Contractor shall restore all easements that will be disturbed during construction of this project to existing grade as established with the Storm Water Drain #218 Project Mass Grading. All costs associated shall be Subsidiary to Project.

**STORM WATER SEWER # 598
to serve
TYLER'S LANDING 2ND ADDITION**

CITY OF WICHITA, KANSAS
James L. Armour, P.E. Acting City Engineer
Project Number
468-83728
O.C.A. Number
751356



Benefit District

BENCHMARKS:

- BW #1: 804 Spike in West face of North High Line Pole in East R/W Tyler Road 1/2 mile of South of 37th Street North. Elev = 176.05 City Datum
- BW #2: "□" Cut Top of Curb on West side of Pepper Ridge 15± South of Northeast Corner Lot 23, Block 5, Forest Lakes West Addition. Elev = 157.12 City Datum

Sheet Index

Tile Sheet	1
Line 1	2-4
Line 14	5
Line 2	6
Line 3 & Line 4	7
Line 5	8
Line 6	9
Line 7	10
Std. Type 14 Double Inlet Detail	11
Std. Type 14 Single Inlet Detail	12
RC Manhole Detail	13
Manhole Ring and Cover Detail	14
Special Yrd Inlet Detail	15
Headwall Detail	16
Soil Erosion Control BMPs	17-20
Erosion Control Plan	21-22
Copy of Plat	23

