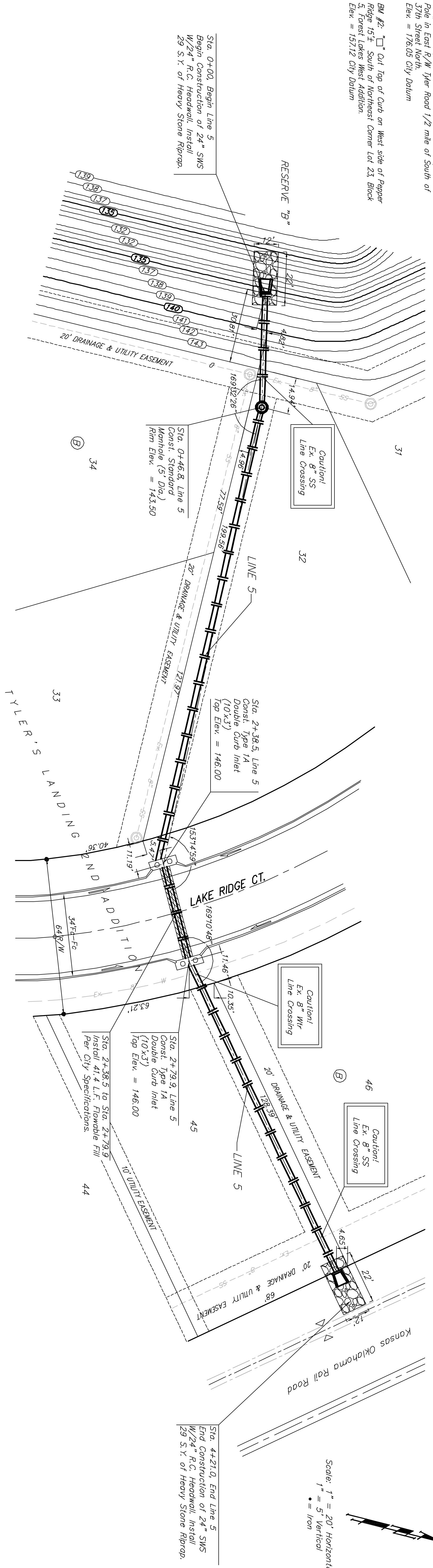


Benchmark:

BM #1: 80d Spike in West face of North High Line Pole in East R/W Tyler Road 1/2 mile of South of 37th Street North.
Elev. = 176.05 City Datum

BM #2: "C" Cur Top of Curb on West side of Pepper Ridge 15'± South of Northeast Corner Lot 23, Block 5, Forest Lakes West Addition
Elev. = 157.12 City Datum



150	145	140	135	130
-----	-----	-----	-----	-----

TYLER'S LANDING 2ND ADDITION
LINE 5
 STORM WATER SEWER IMPROVEMENTS

BAUGHMAN COMPANY P.A.
 ENGINEERING, SURVEYING, & PLANNING
 316-263-7271 • 315 ELLIS • WICHITA, KANSAS 67211

PROJECT NUMBER: 459-85725
 SHEET: 8 OF 23
 DATE: 04/04
 SCALE: NOTED

DESIGN: MBW
 DRAWN: AID
 APPROVED: [Signature]