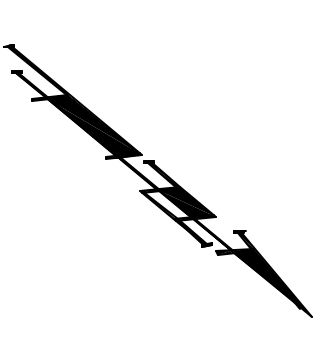
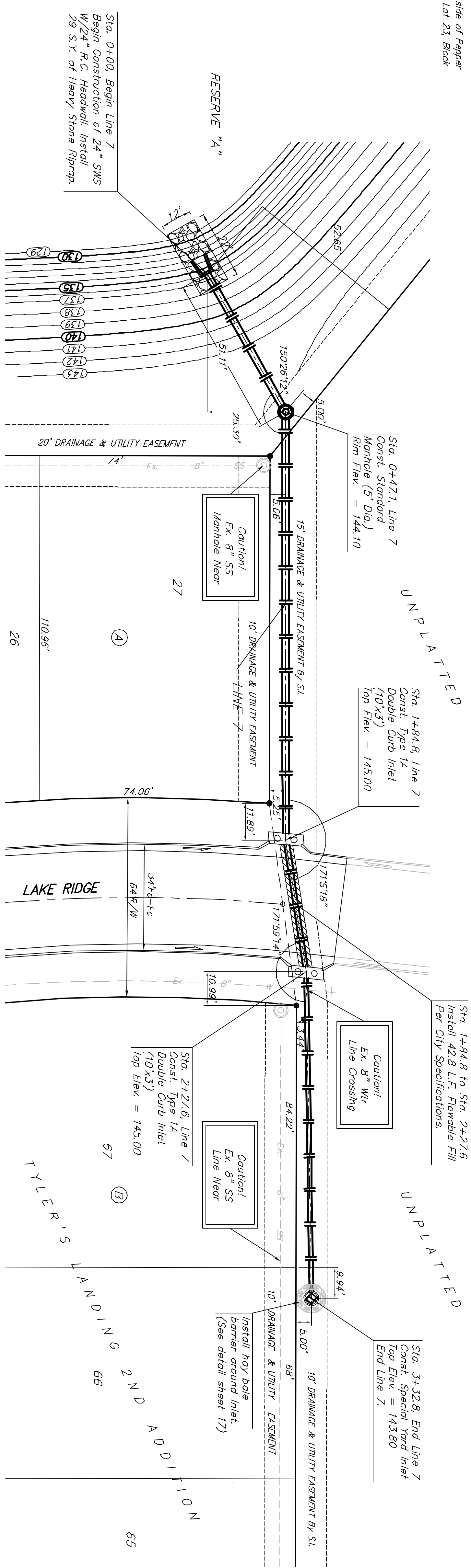
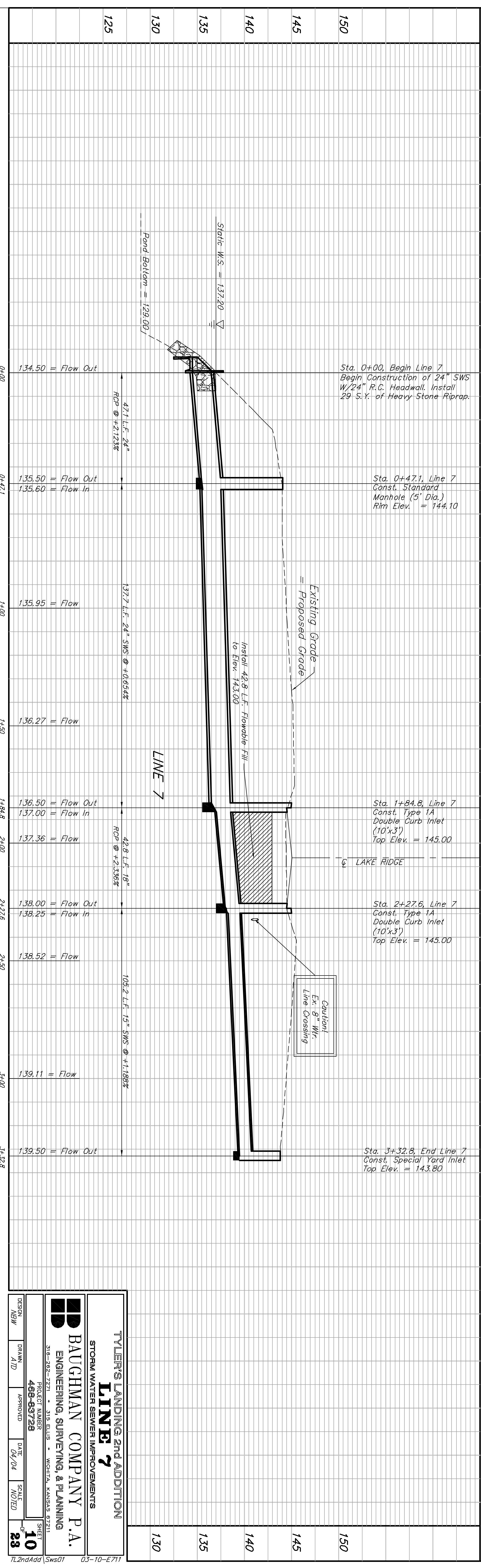


Benchmark:
 BM #1: 80d Spike in West face of North High Line Pole in East R/W Dyer Road 1/2 mile or South of 57th Street North.
 Elev. = 176.05 City Datum

BM #2: "C" Cut Top of Curb on West side of Pepper Ridge 15± South of Northeast Corner Lot 23, Block 5, Forest Lakes West Addition.
 Elev. = 157.12 City Datum



Scale: 1" = 20' Horizontal
 1" = 5' Vertical
 • = Non



TYLER'S LANDING 2nd ADDITION
LINE 7
 STORM WATER SEWER IMPROVEMENTS

BAUGHMAN COMPANY P.A.
 ENGINEERING, SURVEYING, & PLANNING

316-282-2721 • 316-6198 • WICHITA, KANSAS 67221
 PROJECT NUMBER: 466-83728
 SHEET: 10 OF 28

DESIGN: MBW
 DRAWN: JTD
 APPROVED: [Signature]
 DATE: 07/04
 SCALE: NOTED