

PRECAST SLAB AND FLOOR REINFORCING

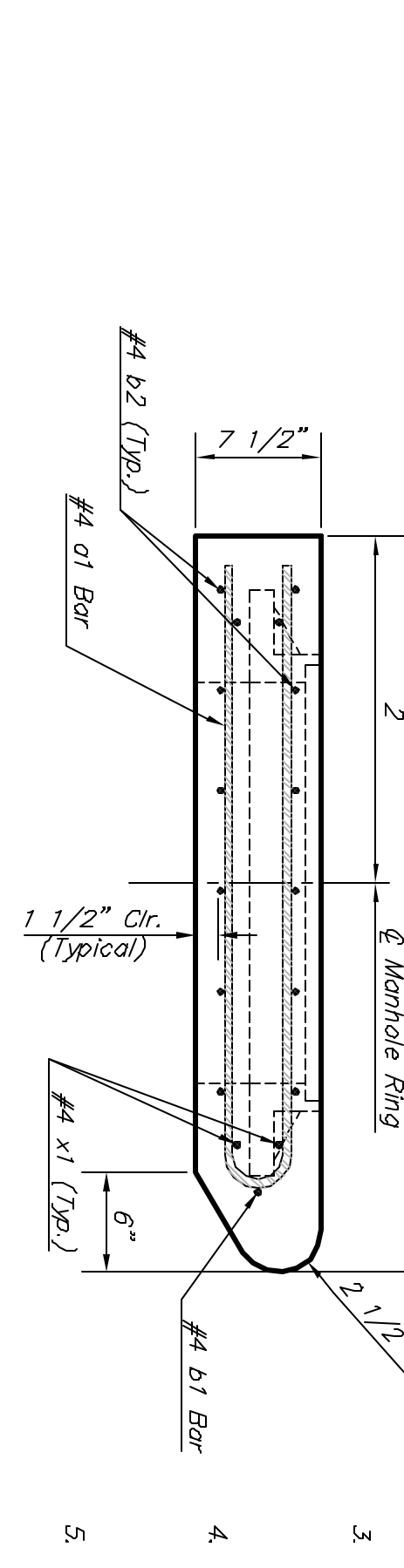
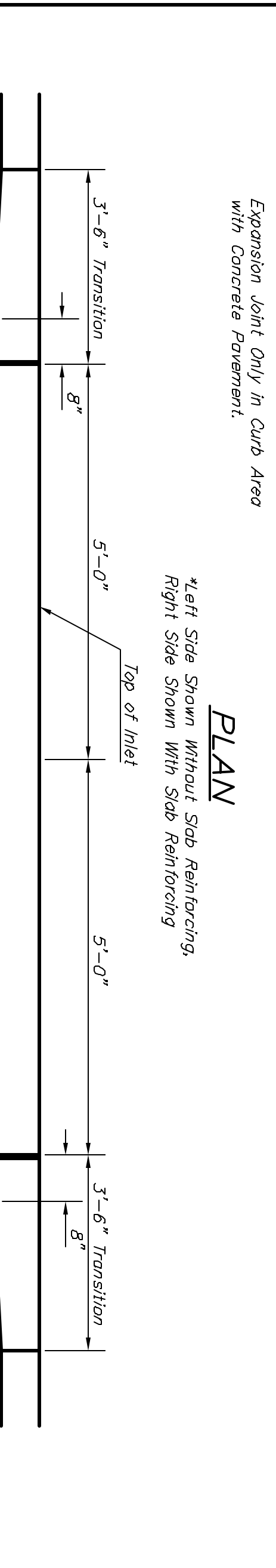
MARK	SIZE	NO.	LENGTH	NO.	LENGTH	NO.	LENGTH	NO.	LENGTH	NO.	LENGTH
W1	#4	13	8'-0"	13	8'-0"	13	12'-0"	13	14'-0"	13	14'-0"
W2	#4	4	6'-0"	4	8'-0"	4	10'-0"	4	12'-0"	4	14'-0"
W3	#4	23	4'-1"	23	5'-1"	23	6'-1"	23	7'-1"	23	8'-1"
X1	#4	23	11'-1"	29	11'-1"	35	11'-1"	41	11'-1"	47	11'-1"
X2	#4	16	3'-10"	16	4'-2"	16	4'-4"	16	4'-6"	16	4'-8"

WALL REINFORCING

MARK	SIZE	NO.	LENGTH	NO.	LENGTH	NO.	LENGTH	NO.	LENGTH	NO.	LENGTH
W1	#4	13	11'-1"	13	11'-1"	13	11'-1"	13	11'-1"	13	11'-1"
W2	#4	4	4'-1"	4	5'-1"	4	6'-1"	4	7'-1"	4	8'-1"
W3	#4	23	4'-1"	23	5'-1"	23	6'-1"	23	7'-1"	23	8'-1"

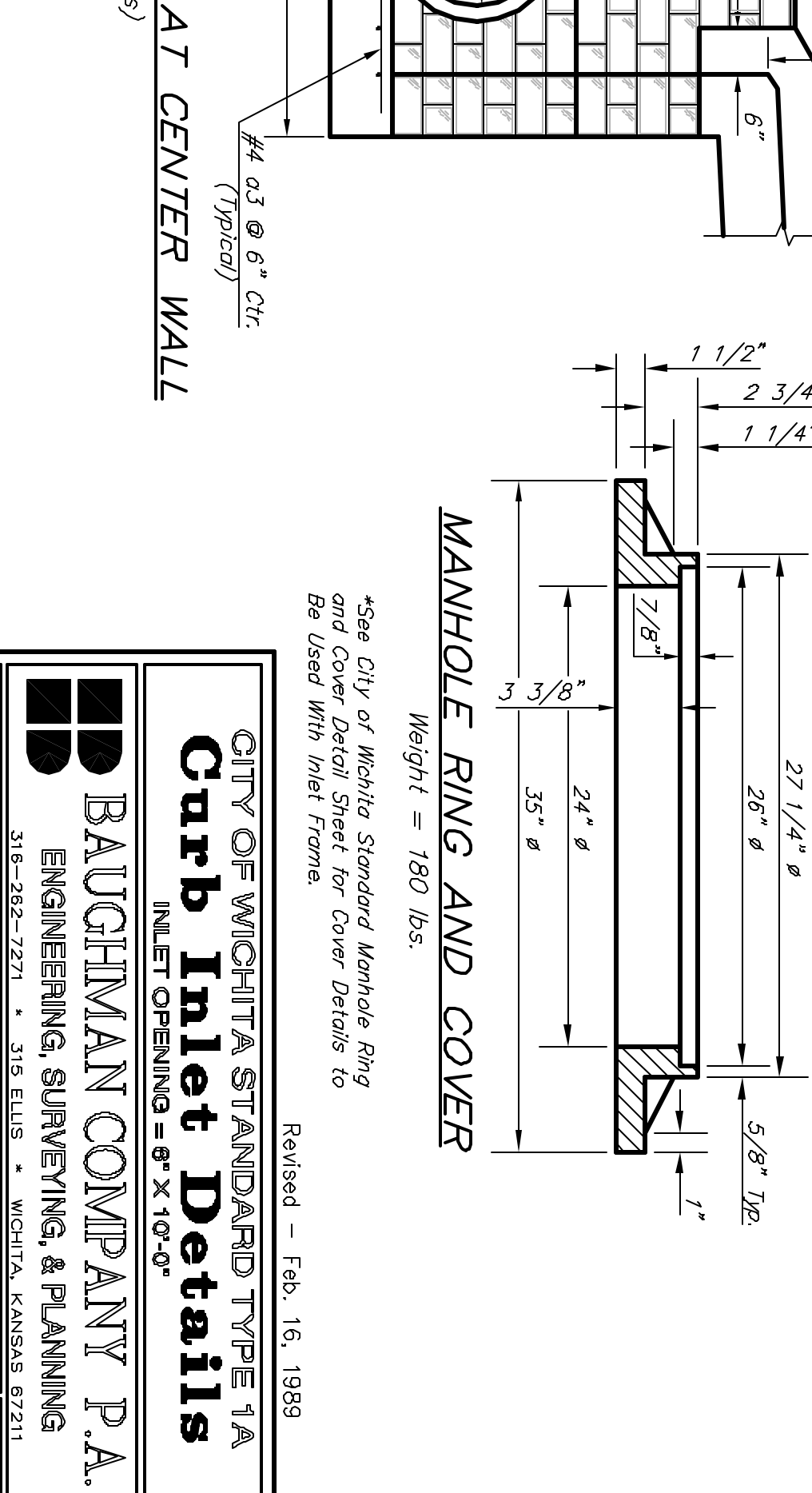
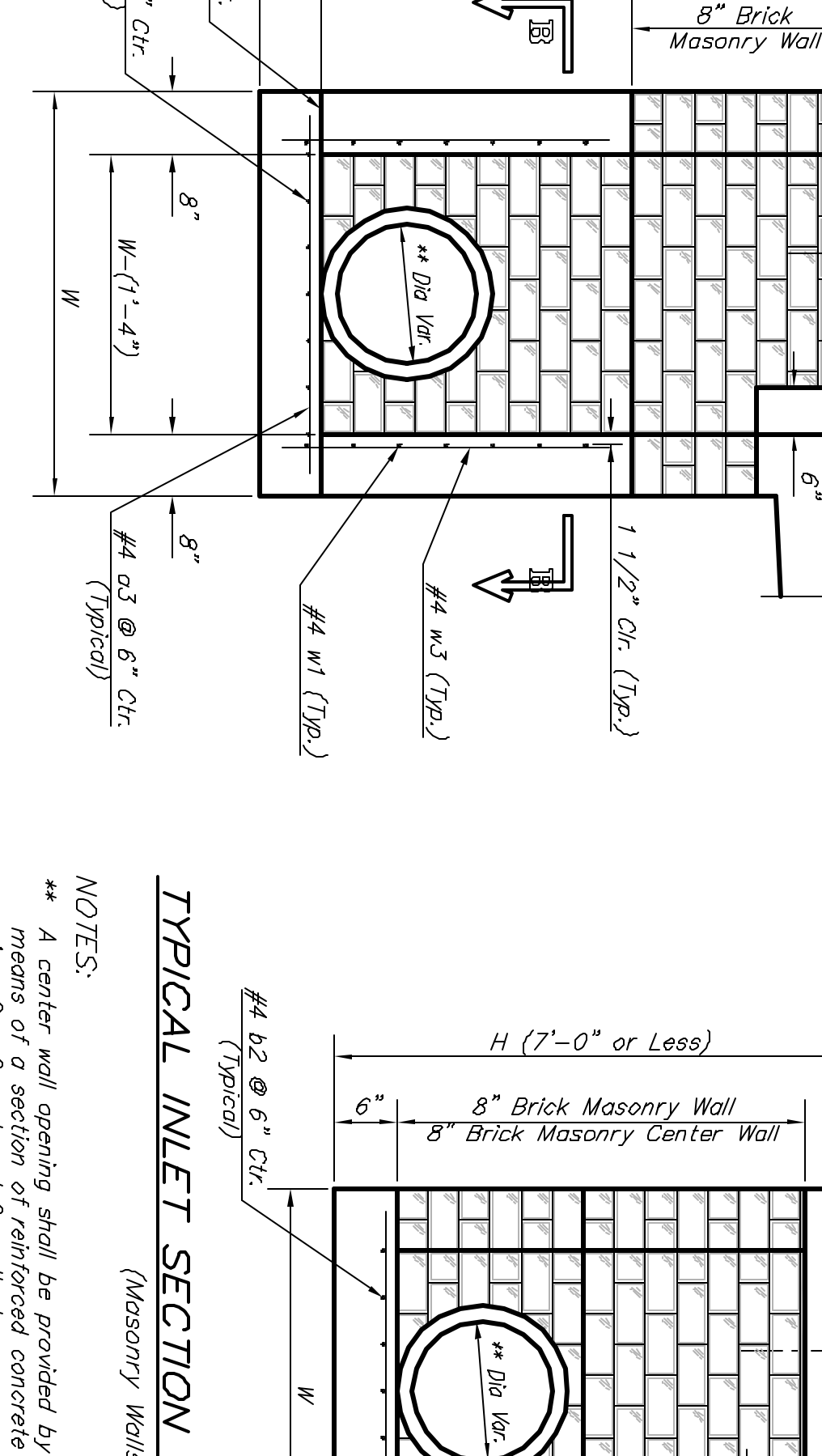
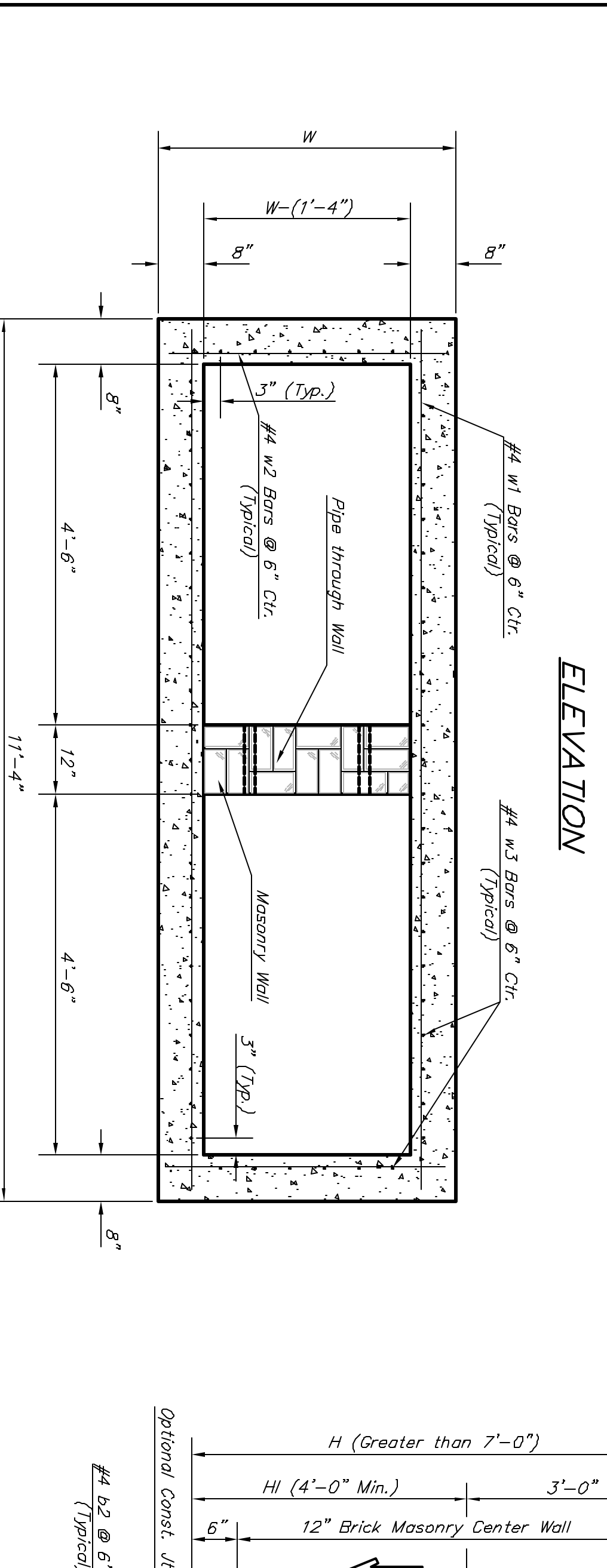
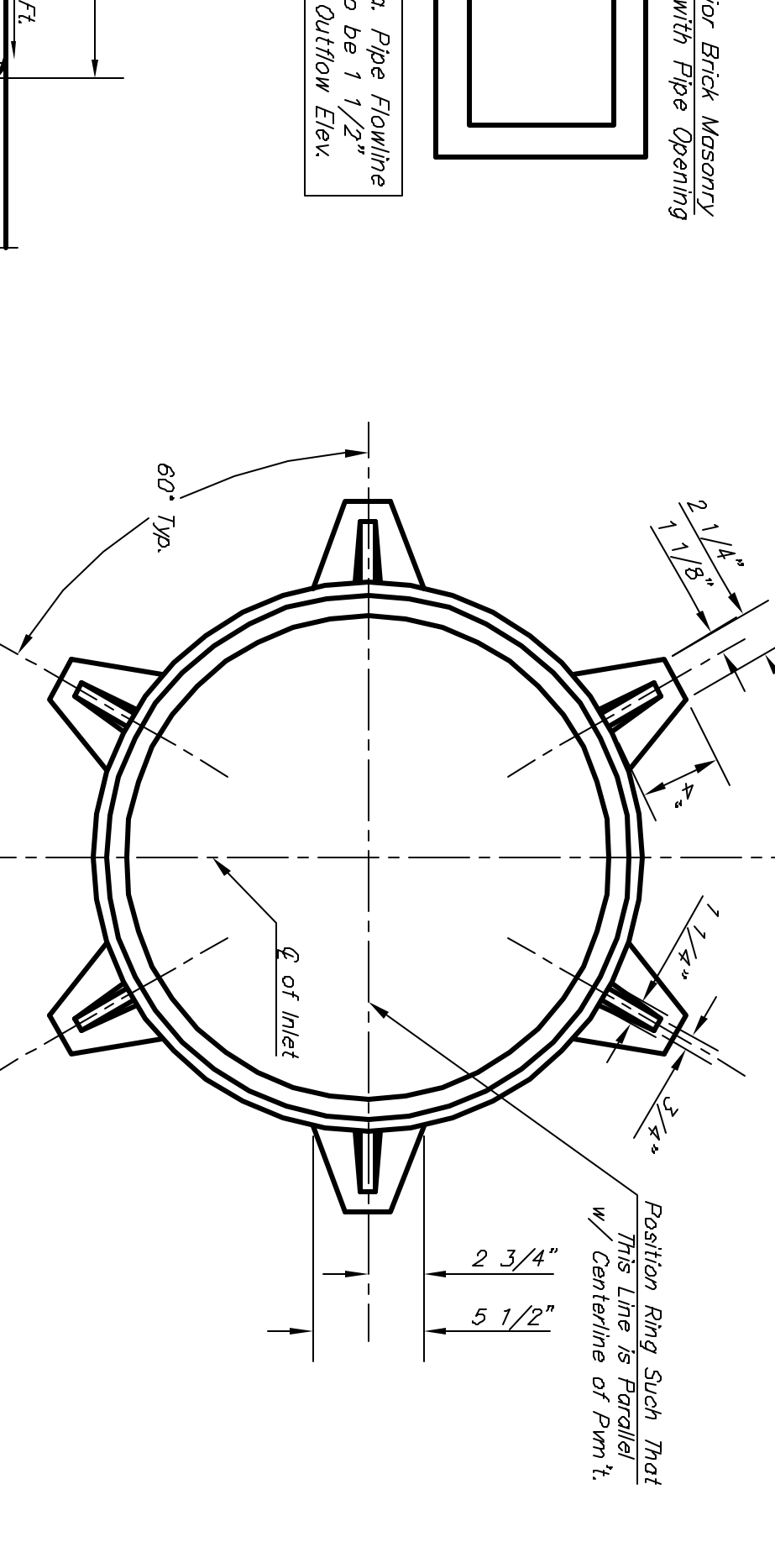
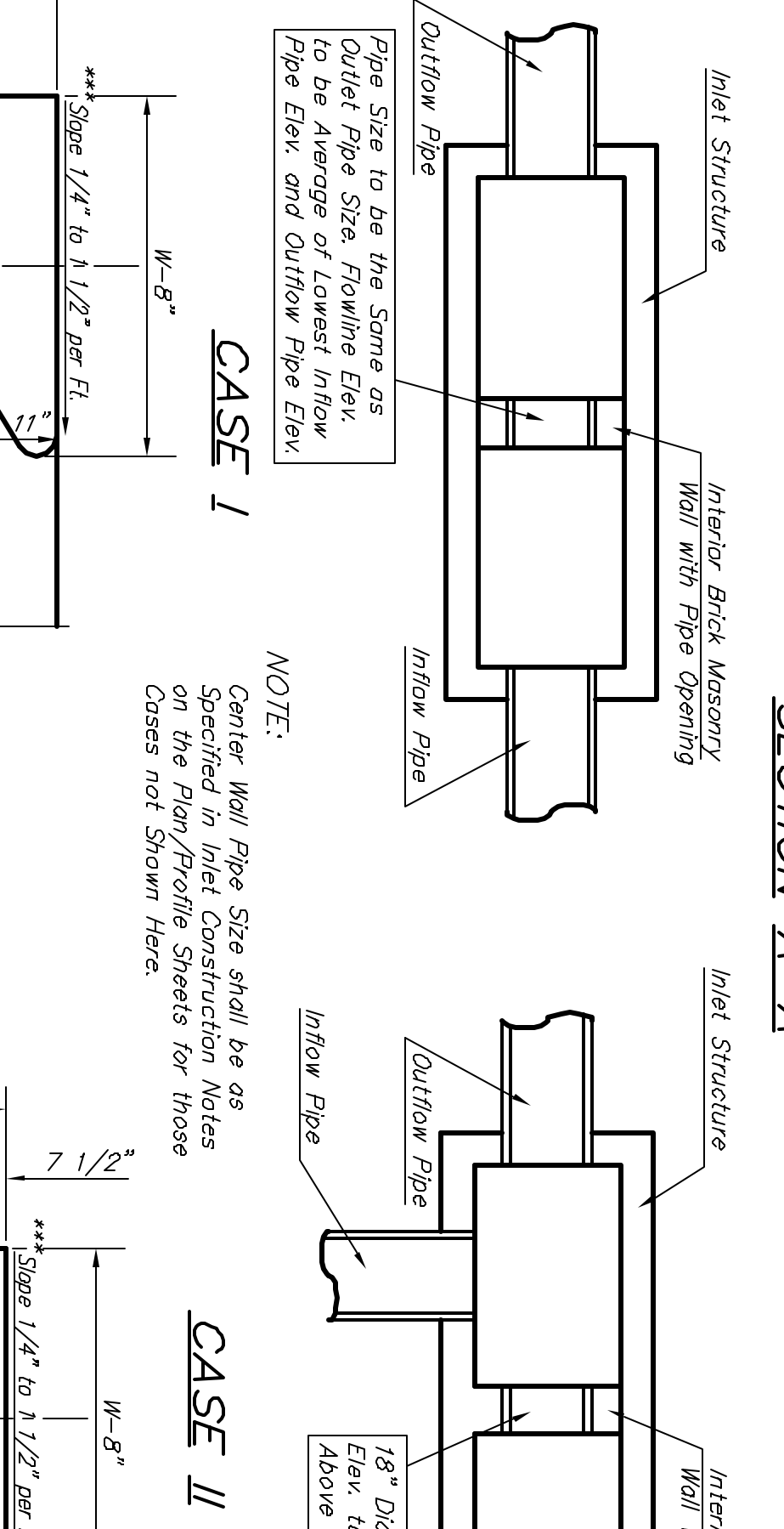
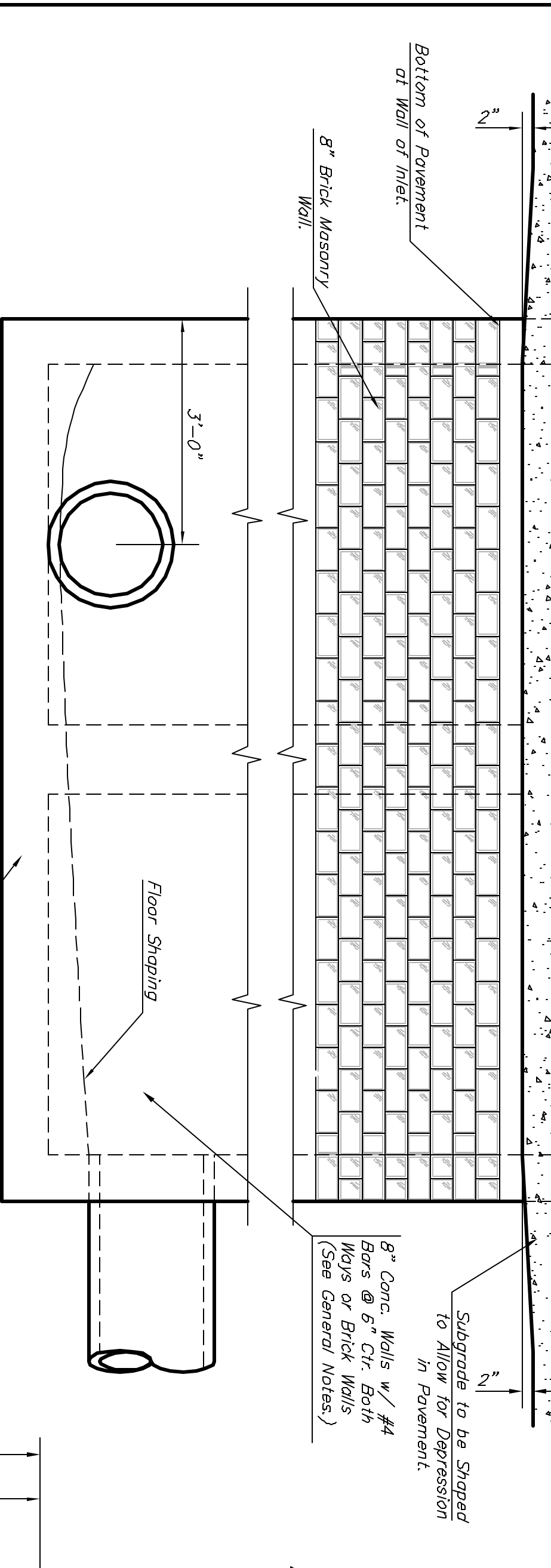
GENERAL NOTES:

- The contractor shall be required to construct 8" brick masonry walls between the concrete inlet base and top on this inlet when W-6'-4" or less and H-7'-0" or less. When W is greater than 6'-4" and H is less than 7'-0" the outside inlet walls below the brick stack shall be reinforced concrete construction and the center wall shall be of masonry construction as shown for the masonry wall option.
- Inlet inverts shall be shaped with a sack sand mix concrete to create flow channels and to increase hydraulic efficiency such that the inlet will be self-cleaning between all inlet and/or outlet pipes.
- Concrete tops to be installed on thin mortar cushion to insure full support along brick walls. Concrete tops may be cast in place or precast. Concrete used for inlet construction shall be concrete pavement mix.
- Inlet top reinforcing shall be spaced on 6" max. to facilitate construction of curb. Bars in inlet top to be field bent or cut to clear manhole ring.
- The ends of all pipes installed in inlets shall be cut off flush with the inside face of the inlet wall.



BENDING DIAGRAM

STANDARD CURB INLET PRECAST TOPS	PRE-CAST TOP SIZE	PIPE SIZE	PIPE SIZE	CU. YD. CONC.
W	4'-4"	3'-8"	21" & SMALLER	0.83x
	5'-4"	4'-8"	24" & 30"	1.09x
	6'-4"	5'-8"	36" & 42"	1.35x
	7'-4"	6'-8"	48" & 54"	1.61x
	8'-4"	7'-8"	60" & 66"	1.87x



SECTION B-B

SECTION A-A

SECTION C-C

TYPICAL INLET SECTION AT CENTER WALL

TYPICAL INLET SECTION AT CENTER WALL

TYPICAL INLET SECTION AT CENTER WALL

MANHOLE RING AND COVER

CITY OF WICHITA STANDARD TYPE 1A Curb Inlet Details

BAUGHMAN COMPANY P.A.

ENGINEERING, SURVEYING, & PLANNING

315-282-7221 • 315 ELLIS • WICHITA, KANSAS 67211

PROJECT NUMBER: 458-89726

DESIGN: C.O.W. DRAWN: Staff APPROVED: DATE: 4/04 SCALE: NONE SHEET: 11 OF 23

Revised - Feb. 16, 1989

Weight = 180 lbs.

*See City of Wichita Standard Manhole Ring and Cover Detail Sheet for Cover Details to Be Used With Inlet Frame.

Revised - Feb. 16, 1989