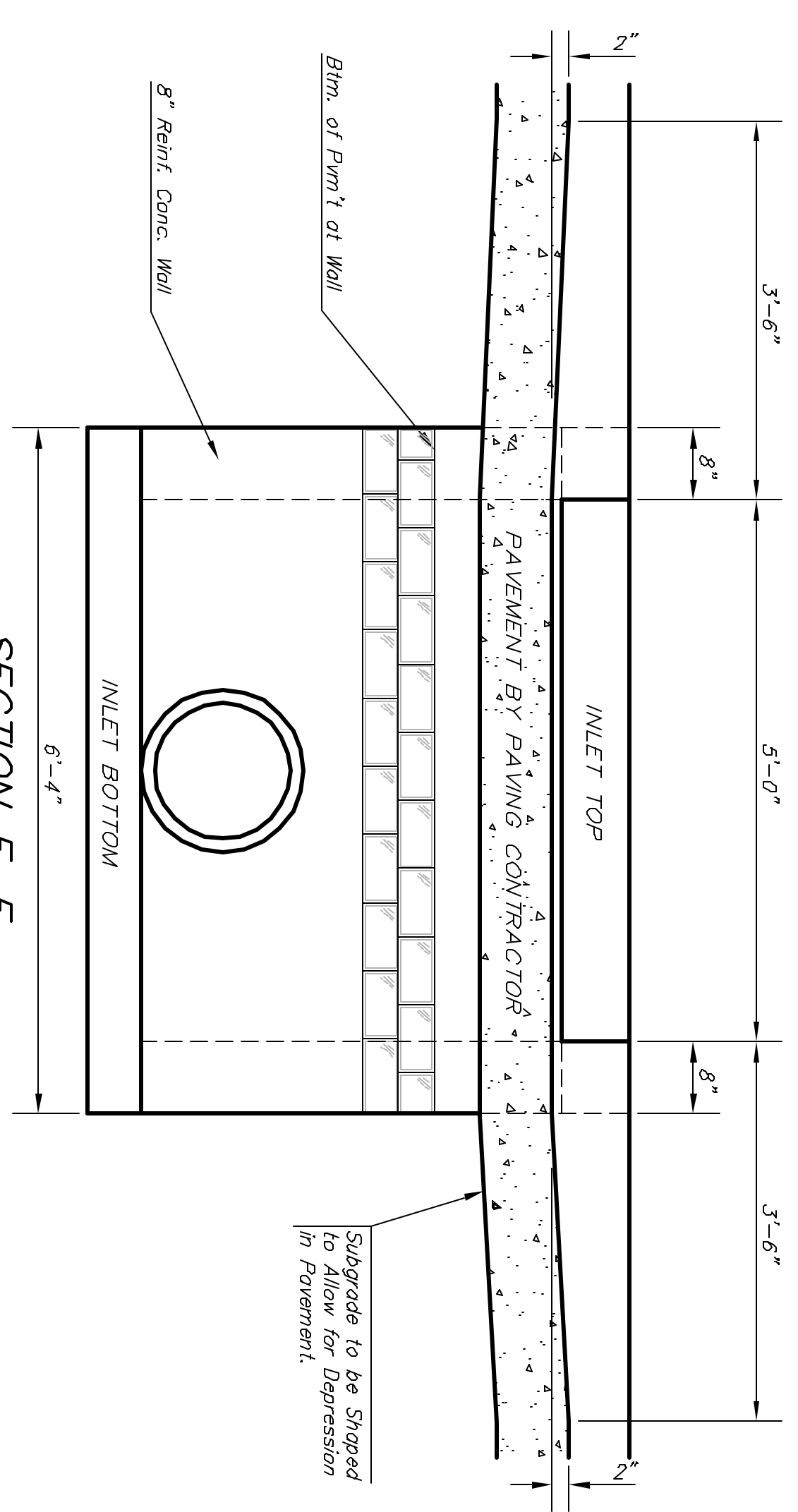
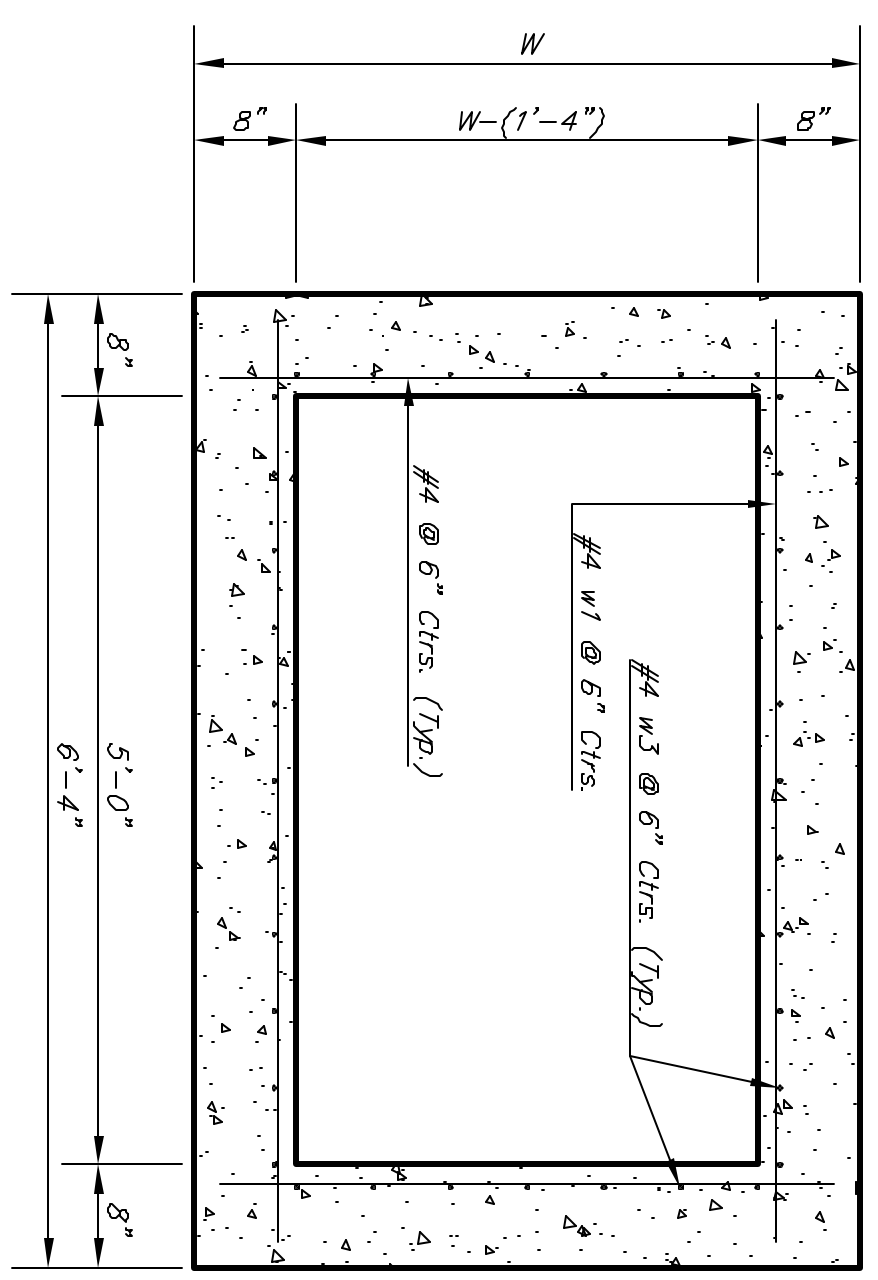


NOTE:
Expansion Joint Only in Curb
Aero With Concrete Pavement.

PLAN



SECTION E-E

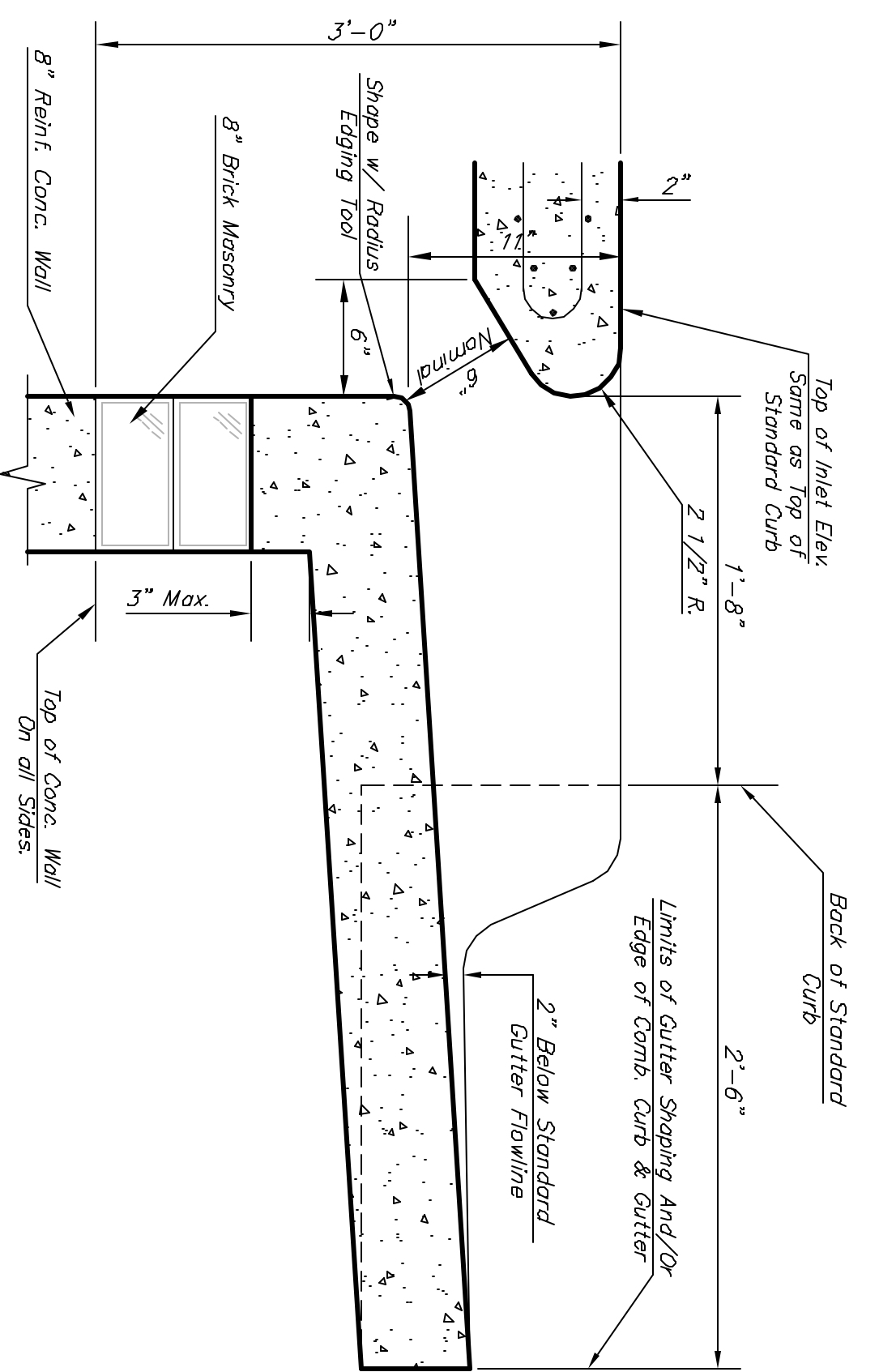


SECTION D-D

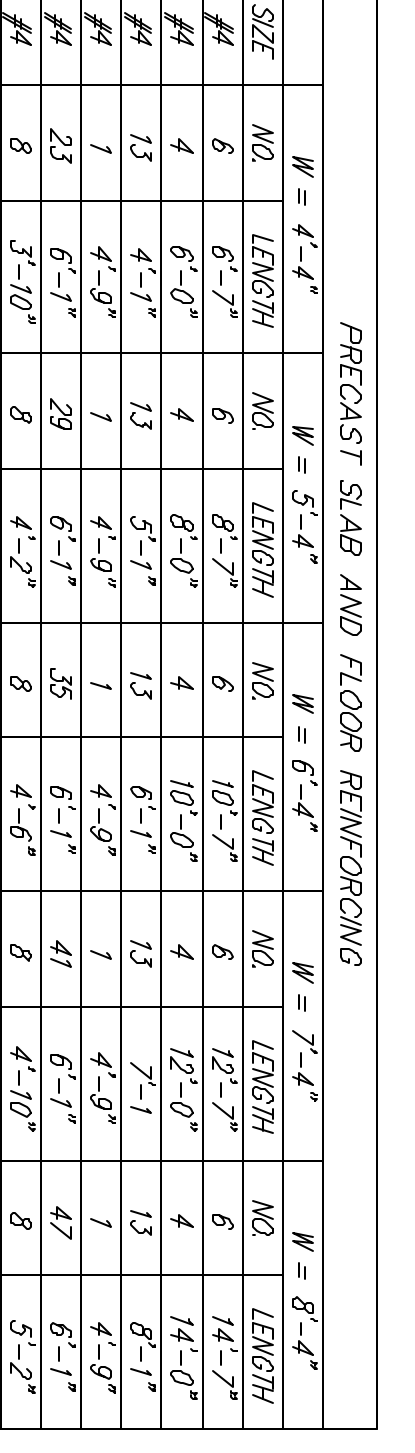
NOTE:
Inlet Top Reinforcing shall be Spaced on 6" Max. Centers. Inlet Lids Shall be Notched Out as Indicated to Facilitate Construction of Curb.

NOTE:
Concrete Tops to be installed on thin mortar cushion to insure full support along brick walls. Concrete Tops may be cast in place or precast. Concrete used for inlet construction shall be concrete pavement mix with air entrainment.

SECTION A-A

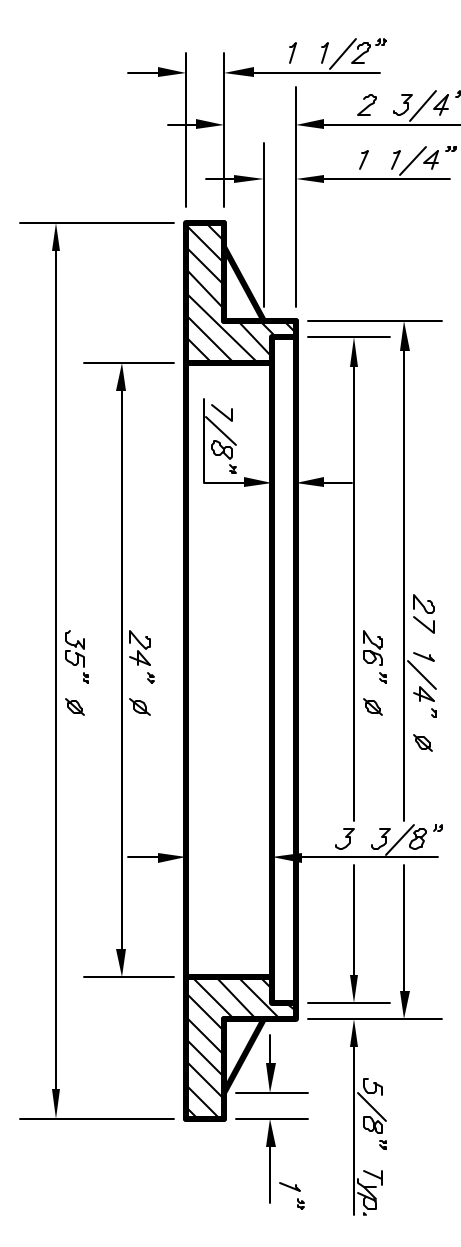


SECTION B-B



PRECAST SLAB AND FLOOR REINFORCING											
MARK	SIZE	NO.	LENGTH	NO.	LENGTH	NO.	LENGTH	NO.	LENGTH	NO.	LENGTH
W	4'-4"	6	6'-7"	6	8'-7"	6	10'-7"	4	10'-0"	4	14'-0"
a1	#4	6	6'-7"	6	8'-7"	6	10'-7"	4	10'-0"	4	14'-0"
a2	#4	4	6'-0"	4	8'-0"	4	10'-0"	4	12'-0"	4	14'-0"
a3	#4	13	4'-1"	13	5'-1"	13	6'-1"	13	7'-1"	13	8'-1"
b1	#4	1	4'-9"	1	4'-9"	1	4'-9"	1	4'-9"	1	4'-9"
b2	#4	23	6'-1"	29	6'-1"	35	6'-1"	41	6'-1"	47	6'-1"
x1	#4	8	3'-10"	8	4'-2"	8	4'-6"	8	4'-10"	8	5'-2"

WALL REINFORCING											
MARK	SIZE	NO.	LENGTH	NO.	LENGTH	NO.	LENGTH	NO.	LENGTH	NO.	LENGTH
W	4'-4"	6	6'-7"	6	8'-7"	6	10'-7"	4	10'-0"	4	14'-0"
w1	#4	6	6'-7"	6	8'-7"	6	10'-7"	4	10'-0"	4	14'-0"
w2	#4	4	4'-1"	4	5'-1"	4	6'-1"	4	7'-1"	4	8'-1"
w3	#4	38	38	40	40	44	44	48	48	52	52



MANHOLE RING AND COVER

Weight = 180 Lbs
*See City of Wichita Standard Manhole Ring and Cover Detail Sheet for Cover Details to Be Used with Inlet Frame.

SECTION C-C



Revised - Feb. 16, 1989

CITY OF WICHITA STANDARD TYPE 1A
Curb Inlet Details

BAUGHMAN COMPANY P.A.
ENGINEERING, SURVEYING, & PLANNING
316-282-7271 • 316 ELLIS • WICHITA, KANSAS 67211
PROJECT NUMBER: **498-83726**

DESIGN	COLW	DRAWN	Staff	APPROVED	DATE	SCALE	SHEET
					04/04	None	12
							of 23