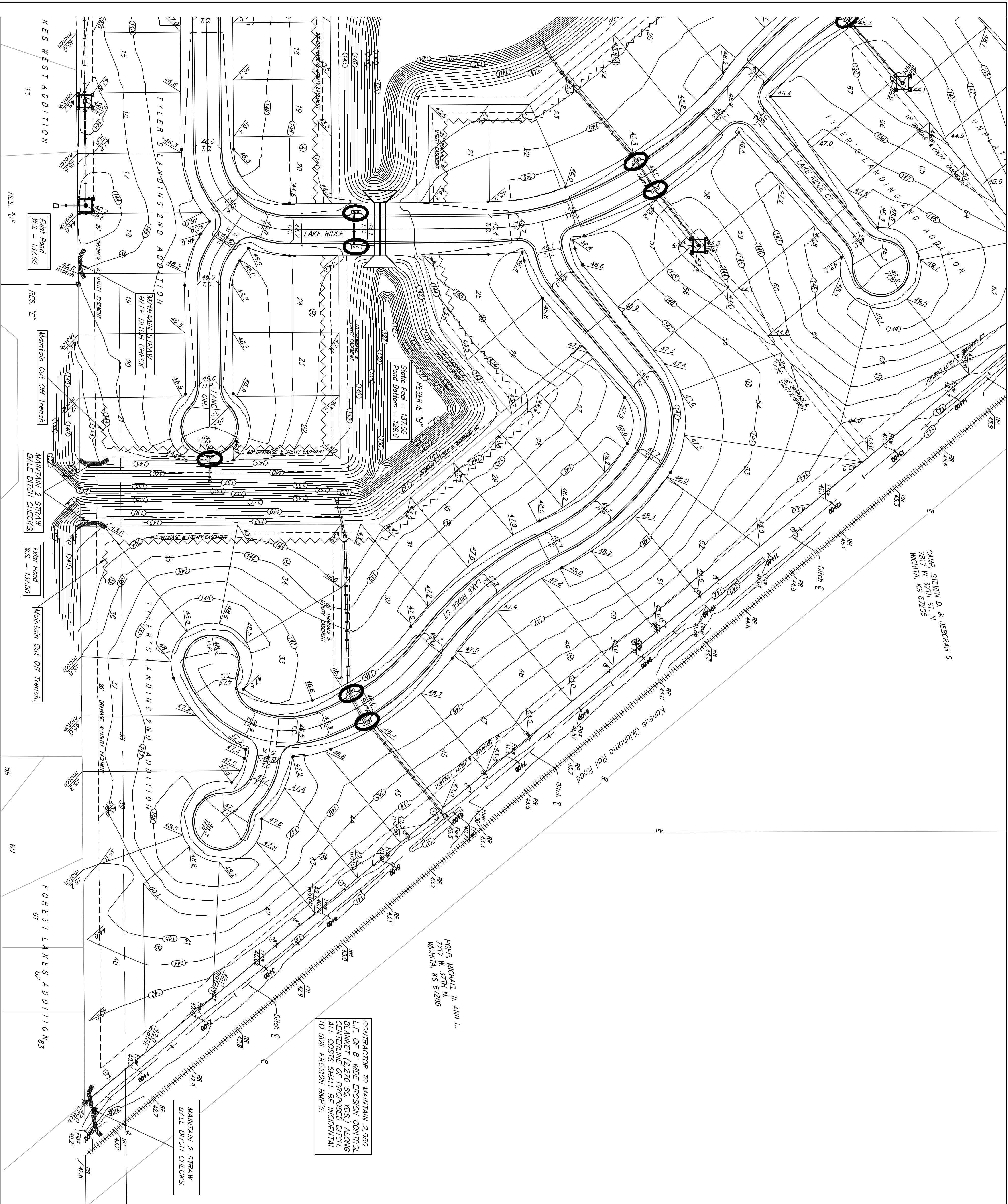


CAMP STEVEN D. & DEBORAH S.
 7817 W. 37TH ST. N
 WICHITA, KS 67205

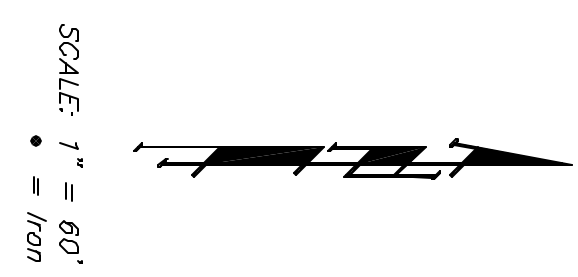
POPP MICHAEL W. ANN L.
 1707 W. 37TH N.
 WICHITA, KS 67205

CONTRACTOR TO MAINTAIN 2.550 L.F. OF 8" WIDE EROSION CONTROL BLANKET (2.270 SQ. YDS.) ALONG CENTERLINE OF PROPOSED DITCH, INCLUDING STRAW BALES IDENTICAL TO SOIL EROSION BMP'S.



BM #1: 804 Spike in West face of North High Line Pole in East R/W Tyler Road 1/2 mile of South of 37th Street North. Elev. = 176.05 City Datum (1363.45 NGVD)

BM #2: "□" Cut Top of Curb on West side of Pepper Ridge 151±, South of Northeast Corner Lot 23, Block 5, Forest Lakes West Addition. Elev. = 157.12 City Datum (1344.52 NGVD)



EROSION CONTROL PLAN

LEGEND

- DROP INLET PROTECTION
- CURB INLET PROTECTION
- STRAW BALE BARRIERS
- SILT FENCING
- EARTH DITCHES

NO SCALE

EROSION CONTROL MEASURE	UNITS	QUANTITY
SILT FENCE	L.F.	MAINTAIN
RIPRAP	S.Y.	189
DROP INLET BARRIER	EA.	9
CURB INLET BARRIER	EA.	13
STRAW BALE DITCH CHECK	EA.	MAINTAIN
CURVE DITCH	L.F.	MAINTAIN
CURLEX (DITCH BOTTOM)	S.Y.	MAINTAIN
POND E.C. BLANKET	S.Y.	MAINTAIN
Construction Entrance	EA.	1

QUANTITIES ARE FOR INFORMATION ONLY. CONTRACTOR SHALL VERIFY QUANTITIES PER SPECIFIC ENGINEERING PLAN SHEET.

NOTES
 1. This Plan is Not To Be Used As A Comprehensive Grading Plan. All Spot Elevations Are Proposed & Subject To Change.

TYLER'S LANDING 2ND ADDITION
EROSION CTL. PLAN
 CITY OF WICHITA, KANSAS

BAUGHMAN COMPANY P.A.
 ENGINEERING, SURVEYING, & PLANNING
 315-282-7271 • 315 ELLIS • WICHITA, KANSAS 67211
 PROJECT NUMBER: 488-89728

DESIGN: SCZ
 DRAWN: SCZ
 APPROVED: MBW
 DATE: 04/04
 SCALE: 1"=60'
 SHEET: 23 OF 23