

2-1

MH # 5744-688
Rework Manhole Bench & Invert
Approx depth = 13.8 ft

MH # 5744-697CO (cleanout)
Construct Shallow Manhole where
cleanout exists (under conc. block)
Depth unknown

MH # 5744-694
Approx depth = 4.5 ft

MH # 5744-693
Depth not measured

MH # 5744-689
Approx depth = 8.1 ft

MH # 5744-690
Approx depth = 4.5 ft

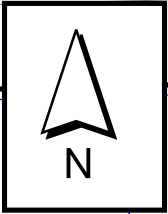
Remove 195 lf of 6" pipe and install 195 lf of 8" pipe from MH 5744-690 to MH 5744-689

Remove 136 lf of 6" pipe and install 136 lf of 8" pipe from MH 5744-694 to MH5744-689

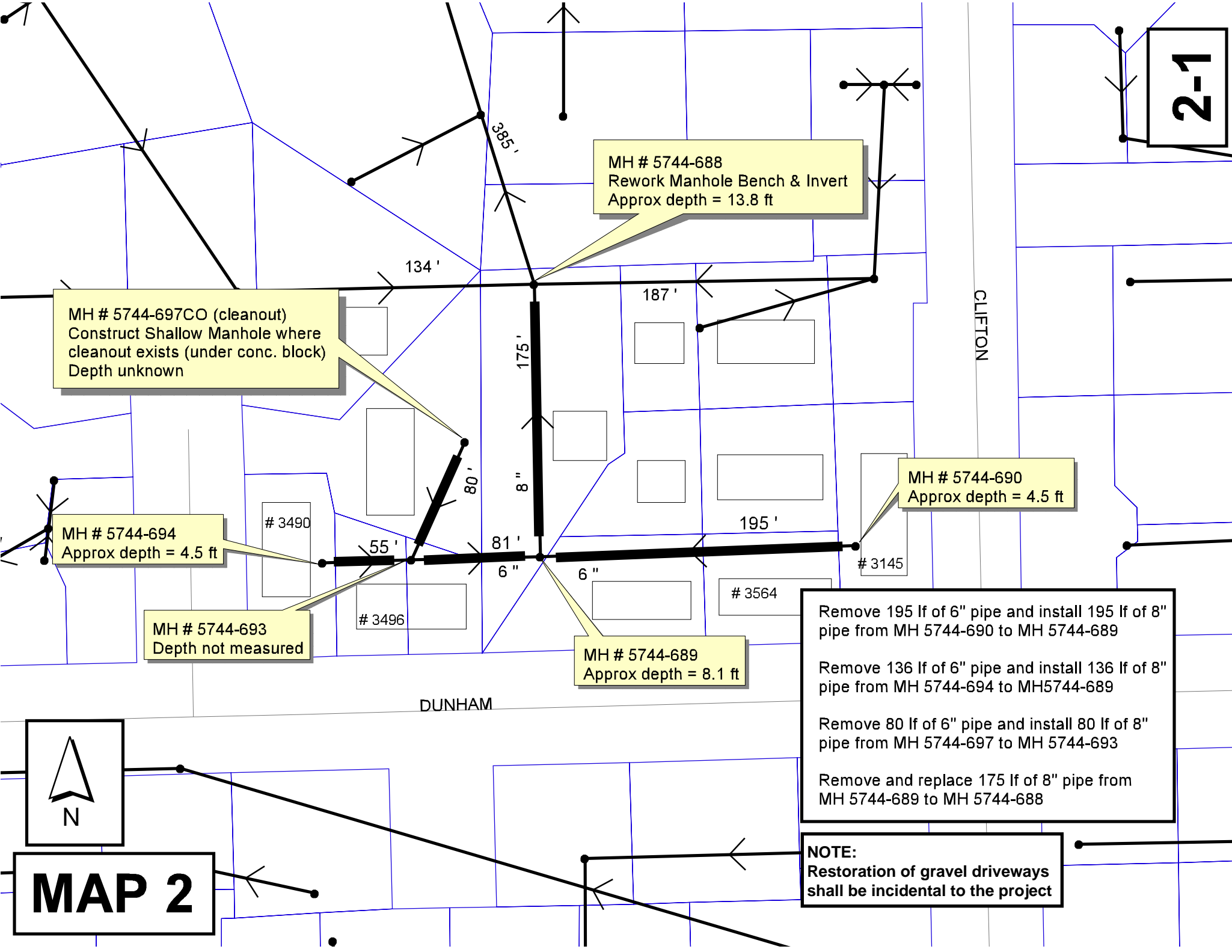
Remove 80 lf of 6" pipe and install 80 lf of 8" pipe from MH 5744-697 to MH 5744-693

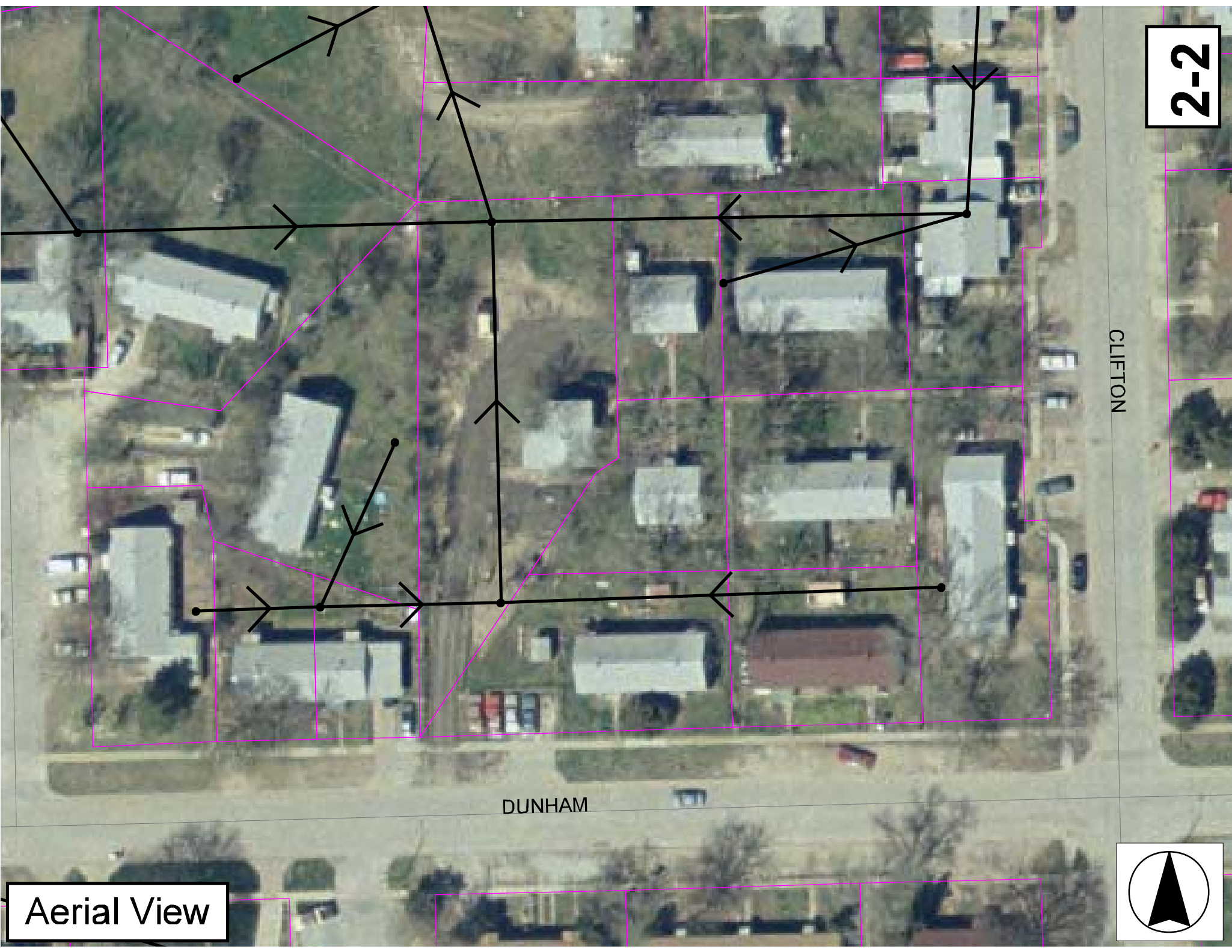
Remove and replace 175 lf of 8" pipe from MH 5744-689 to MH 5744-688

NOTE:
Restoration of gravel driveways
shall be incidental to the project



MAP 2

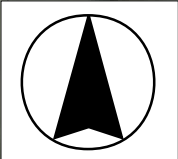




CLIFTON

DUNHAM

Aerial View



Television Inspection Master Report

6/24/2003
11:28:37AM
C01B

US Manhole: 5744-690
DS Manhole: 5744-689 3460 E DUNHAM AVE

Date Insp: 8/2/2000

Basin:

Dir Televised: Upstream To Downstream

Pipe Information

| | | |
|------------------------|----------------|--------------------|
| Shape: Round | Length Status: | Project No.: I-059 |
| Dia/Ht Width: 6 | Material: VCP | Index: |
| Length: 195.0 | Slope: 4.821 | Surface: |
| Pipe Sec Length: 195.0 | Comment: | |

Inspection Information

| | | |
|--|---------------------------|---------------------|
| Crew: 694 | Percent Full: 5 | Tape ID: V-2496 |
| Weather: Sunny | Purpose: TV Existing Line | Counter Start: 0.00 |
| Surface Cond: Trees, Fences, Buildings | Flow: Normal Flow | Counter Stop: |

| Obs. # | VTR Counter Comment | Dist | Location | Description | Rating | Obsrvd (gpm) | Est. (gpm) | Ratings Struct | Clean | Remain (gpm) |
|------------------|---------------------|------|---------------------|------------------|--------|--------------|------------|----------------|-------|--------------|
| 1 | | 0.0 | US Manhole 5744-690 | | | | | | | |
| 2 | | 3.0 | Joint | Offset | 3 | | 0.010 | 20 | 0 | 0.010 |
| 3 | | 3.0 | Joint | Roots | 1 | | 0.002 | 1 | 1 | 0.002 |
| 4 | | 6.0 | Joint | Roots | 1 | | 0.002 | 1 | 1 | 0.002 |
| 5 | | 6.0 | Quad 1 / U-Rt | Crack-Radial | 1 | | 0.001 | 1 | 0 | 0.001 |
| 6 | | 8.0 | Joint | Roots | 1 | | 0.002 | 1 | 1 | 0.002 |
| 7 | | 8.0 | Crown | Crack-Radial | 1 | | 0.001 | 1 | 0 | 0.001 |
| 8 | | 18.0 | Joint | Roots | 2 | | 0.004 | 2 | 4 | 0.004 |
| 9 | | 20.0 | Joint | Roots | 2 | | 0.004 | 2 | 4 | 0.004 |
| 10 | | 20.0 | Invert | Crack-Radial | 1 | | 0.001 | 1 | 0 | 0.001 |
| 11 | | 23.0 | Joint | Roots | 3 | | 0.008 | 5 | 8 | 0.008 |
| 12 | | 25.0 | Quad 1 / U-Rt | Crack-Radial | 4 | | 0.008 | 10 | 0 | 0.008 |
| 13 | | 28.0 | Joint | Offset | 3 | | 0.010 | 20 | 0 | 0.010 |
| 14 | | 29.0 | North | Wye Service | 1 | | 0.000 | 0 | 0 | 0.000 |
| 15 | | 29.0 | South | Wye Service | 1 | | 0.000 | 0 | 0 | 0.000 |
| 16 | | 30.0 | Joint | Roots | 1 | | 0.002 | 1 | 1 | 0.002 |
| 17 | | 32.0 | Joint | Roots | 2 | | 0.004 | 2 | 4 | 0.004 |
| 18 | | 37.0 | Joint | Roots | 2 | | 0.004 | 2 | 4 | 0.004 |
| 19 | | 37.0 | Joint | Offset | 3 | | 0.010 | 20 | 0 | 0.010 |
| 20 | | 40.0 | Joint | Roots | 1 | | 0.002 | 1 | 1 | 0.002 |
| 21 | | 42.0 | Joint | Roots | 1 | | 0.002 | 1 | 1 | 0.002 |
| 22 | | 45.0 | Joint | Roots | 1 | | 0.002 | 1 | 1 | 0.002 |
| 23 | | 47.0 | Joint | Roots | 1 | | 0.002 | 1 | 1 | 0.002 |
| 24 | | 50.0 | Joint | Roots | 1 | | 0.002 | 1 | 1 | 0.002 |
| 25 | | 52.0 | Joint | Roots | 2 | | 0.004 | 2 | 4 | 0.004 |
| 26 | | 52.0 | Crown | Broken Pipe | 5 | | 0.060 | 100 | 0 | 0.060 |
| CHIP OUT OF TILE | | | | | | | | | | |
| 27 | | 55.0 | Joint | Roots | 2 | | 0.004 | 2 | 4 | 0.004 |
| 28 | | 55.0 | Quad 4 / U-Lt | Crack-Horizontal | 3 | | 0.004 | 5 | 0 | 0.004 |
| 29 | | 62.0 | Joint | Roots | 1 | | 0.002 | 1 | 1 | 0.002 |
| 30 | | 63.0 | South | Wye Service | 1 | | 0.000 | 0 | 0 | 0.000 |
| 31 | | 63.0 | North | Wye Service | 1 | | | | | 0.000 |
| 32 | | 64.0 | Invert | Crack-Radial | 1 | | 0.001 | 1 | 0 | 0.001 |
| 33 | | 67.0 | Joint | Roots | 1 | | 0.002 | 1 | 1 | 0.002 |
| 34 | | 83.0 | Joint | Roots | 2 | | 0.004 | 2 | 4 | 0.004 |
| 35 | | 90.0 | Joint | Roots | 2 | | 0.004 | 2 | 4 | 0.004 |
| 36 | | 93.0 | Invert | Crack-Horizontal | 3 | | 0.004 | 5 | 0 | 0.004 |
| 37 | | 95.0 | Joint | Roots | 2 | | 0.004 | 2 | 4 | 0.004 |
| 38 | | 95.0 | Crown | Crack-Horizontal | 4 | | 0.008 | 10 | 0 | 0.008 |

2-3

Television Inspection Master Report

6/24/2003
11:28:37AM
C01B

US Manhole: 5744-690
DS Manhole: 5744-689

Date Insp: 8/2/2000

Basin:

| | | | | | | | | |
|----------------------------|-------|---------------|------------------|---|-------|-----|---|-------|
| 39 | 97.0 | Joint | Roots | 2 | 0.004 | 2 | 4 | 0.004 |
| 40 | 97.0 | Quad 3 / L-Lt | Broken Pipe | 5 | 0.060 | 100 | 0 | 0.060 |
| PIIECE MISSING AT QUAD. 3 | | | | | | | | |
| 41 | 100.0 | Crown | Crack-Horizontal | 3 | 0.004 | 5 | 0 | 0.004 |
| 42 | 105.0 | Crown | Crack-Horizontal | 3 | 0.004 | 5 | 0 | 0.004 |
| 43 | 105.0 | Joint | Roots | 2 | 0.004 | 2 | 4 | 0.004 |
| 44 | 107.0 | Joint | Roots | 2 | 0.004 | 2 | 4 | 0.004 |
| 45 | 107.0 | Quad 4 / U-Lt | Crack-Horizontal | 4 | 0.008 | 10 | 0 | 0.008 |
| 46 | 110.0 | Joint | Roots | 2 | 0.004 | 2 | 4 | 0.004 |
| 47 | 111.0 | South | Wye Service | 1 | | | | 0.000 |
| 48 | 111.0 | North | Break-In Conn | 1 | | | | |
| 49 | 114.0 | Joint | Roots | 2 | 0.004 | 2 | 4 | 0.004 |
| 50 | 117.0 | Crown | Broken Pipe | 3 | 0.010 | 60 | 0 | 0.010 |
| 51 | 119.0 | Joint | Roots | 2 | 0.004 | 2 | 4 | 0.004 |
| 52 | 119.0 | Crown | Crack-Horizontal | 3 | 0.004 | 5 | 0 | 0.004 |
| 53 | 122.0 | Quad 2 / L-Rt | Crack-Horizontal | 3 | 0.004 | 5 | 0 | 0.004 |
| 54 | 127.0 | Quad 3 / L-Lt | Crack-Radial | 2 | 0.002 | 2 | 0 | 0.002 |
| 55 | 132.0 | Joint | Roots | 2 | 0.004 | 2 | 4 | 0.004 |
| 56 | 132.0 | Invert | Crack-Horizontal | 3 | 0.004 | 5 | 0 | 0.004 |
| 57 | 135.0 | Invert | Crack-Radial | 3 | 0.004 | 5 | 0 | 0.004 |
| 58 | 139.0 | Quad 1 / U-Rt | Crack-Radial | 2 | 0.002 | 2 | 0 | 0.002 |
| 59 | 140.0 | South | Break-In Conn | 1 | | | | 0.000 |
| 60 | 141.0 | Crown | Crack-Radial | 1 | 0.001 | 1 | 0 | 0.001 |
| 61 | 144.0 | Quad 2 / L-Rt | Crack-Horizontal | 3 | 0.004 | 5 | 0 | 0.004 |
| CHIP OUT OF TILE IN QUAD 2 | | | | | | | | |
| 62 | 146.0 | Crown | Crack-Horizontal | 3 | 0.004 | 5 | 0 | 0.004 |
| 63 | 146.0 | Joint | Roots | 2 | 0.004 | 2 | 4 | 0.004 |
| 64 | 149.0 | Quad 3 / L-Lt | Crack-Horizontal | 3 | 0.004 | 5 | 0 | 0.004 |
| 65 | 151.0 | Invert | Crack-Horizontal | 3 | 0.004 | 5 | 0 | 0.004 |
| 66 | 154.0 | Invert | Crack-Radial | 3 | 0.004 | 5 | 0 | 0.004 |
| 67 | 162.0 | Quad 2 / L-Rt | Crack-Radial | 2 | 0.002 | 2 | 0 | 0.002 |
| 68 | 166.0 | Crown | Crack-Radial | 1 | 0.001 | 1 | 0 | 0.001 |
| 69 | 174.0 | Quad 4 / U-Lt | Crack-Horizontal | 3 | 0.004 | 5 | 0 | 0.004 |
| 70 | 176.0 | Joint | Roots | 2 | 0.004 | 2 | 4 | 0.004 |
| 71 | 176.0 | Crown | Broken Pipe | 3 | 0.010 | 60 | 0 | 0.010 |
| 72 | 186.0 | Crown | Crack-Radial | 2 | 0.002 | 2 | 0 | 0.002 |
| 73 | 187.0 | Joint | Other | | | | | 0.000 |

CANNOT T.V. TO DOWNSTREAM M.H. DUE TO TURN IN LINE. WE CAN SEE TO DOWNSTREAM M.H. 5744-689.
LINE IN POOR CONDITION BECAUSE OF SO MANY CRACKED JOINTS

Contractor to correct the alignment to eliminate the bend.

2-4

Television Inspection Master Report

6/24/2003
11:28:37AM
C01B

US Manhole: 5744-694
DS Manhole: 5744-693 3500 E DUNHAM AVE

Date Insp: 7/30/2002

Basin:

Dir Televised: Upstream To Downstream

Pipe Information

| | | |
|------------------|----------------|--------------------|
| Shape: Round | Length Status: | Project No.: I-059 |
| Dia/Ht Width: 6 | Material: VCP | Index: |
| Length: 55.0 | Slope: 4.091 | Surface: |
| Pipe Sec Length: | Comment: | |

Inspection Information

| | | |
|----------------------|---------------------------|--------------------|
| Crew: 694 | Percent Full: 15 | Tape ID: V-3470 |
| Weather: Sunny | Purpose: TV Existing Line | Counter Start: 0.0 |
| Surface Cond: Fences | Flow: Normal Flow | Counter Stop: |
| Dyed Test: No | | |

| Obs. # | VTR Counter Comment | Dist | Location | Description | Rating | Obsrvd (gpm) | Est. (gpm) | Ratings | | |
|--------|---------------------|------|---------------------|-------------|--------|--------------|------------|---------|-------|--------------|
| | | | | | | | | Struct | Clean | Remain (gpm) |
| 1 | | 0.0 | US Manhole 5744-694 | | | | | | | |
| 2 | | 5.0 | Joint | Roots | 3 | | 0.008 | 5 | 8 | 0.008 |
| 3 | | 9.0 | Joint | Roots | 3 | | 0.008 | 5 | 8 | 0.008 |
| 4 | | 11.0 | Joint | Roots | 3 | | 0.008 | 5 | 8 | 0.008 |
| 5 | | 14.0 | Joint | Roots | 3 | | 0.008 | 5 | 8 | 0.008 |
| 6 | | 18.0 | Joint | Roots | 3 | | 0.008 | 5 | 8 | 0.008 |
| 7 | | 21.0 | Joint | Roots | 3 | | 0.008 | 5 | 8 | 0.008 |
| 8 | | 25.0 | Joint | Roots | 3 | | 0.008 | 5 | 8 | 0.008 |
| 9 | | 29.0 | Joint | Offset | 3 | | 0.010 | 20 | 0 | 0.010 |

CAMERA CANNOT GET PAST THE OFFSET

WE WILL HAVE TO REVERSE OUR SET-UP AND TELEWISE FROM THE D.S M.H. TO APPROX 26 FT. WEST.

| Obs. # | VTR Counter Comment | Dist | Location | Description | Rating | Obsrvd (gpm) | Est. (gpm) | Ratings | | |
|--|---------------------|------|---|------------------|--------|--------------|------------|---------|-------|--------------|
| | | | | | | | | Struct | Clean | Remain (gpm) |
| 1 | | 0.0 | DS Manhole 5744-693 / tv against the flow | | | | | | | |
| WE ARE REVERSING OUR SET-UP AND COMING IN FROM THE D.S M.H. BECAUSE OF THE OFFSET JOINT AND ROOTS. | | | | | | | | | | |
| 2 | | 1.0 | Crown | Crack-Horizontal | 1 | | 0.001 | 1 | 0 | 0.001 |
| 3 | | 3.0 | Joint | Roots | 3 | | 0.008 | 5 | 8 | 0.008 |
| 4 | | 18.0 | Joint | Roots | 3 | | 0.008 | 5 | 8 | 0.008 |
| 5 | | 21.0 | Joint | Roots | 3 | | 0.008 | 5 | 8 | 0.008 |
| 6 | | 24.0 | Crown | Crack-Radial | 3 | | 0.004 | 5 | 0 | 0.004 |
| 7 | | 24.0 | South | Break-In Conn | 3 | | 0.004 | 2 | 0 | 0.004 |
| 3496 E. DUNHAM | | | | | | | | | | |
| 8 | | 26.0 | Offset Joint (SAME PLACE AS ABOVE) | | | | | | | |

2-5

Television Inspection Master Report

6/24/2003
11:28:37AM

US Manhole: 5744-693 3500 E DUNHAM AVE
DS Manhole: 5744-689 3460 E DUNHAM AVE

Date Insp: 2/18/2003 **Basin:** C01B

Dir Televised: Downstream To Upstream

Pipe Information

Shape: Round Length Status: Project No.: I-059
Dia/Ht Width: 6 Material: VCP Index:
Length: 81.0 Slope: 5.000 Surface:
Pipe Sec Length: Comment: POINT REPAIR MADE BY SEWER MAINTENANCE FROM 34' TO 38' WEST OF #693 TGC

Inspection Information

Crew: 694 Percent Full: 15 Tape ID: V-3819
Weather: Rainy Purpose: TV Existing Line Counter Start: 0;00
Surface Cond: Fences Flow: Normal Flow Counter Stop:
Dyed Test: No

| Obs. # | VTR Counter Comment | Dist | Location | Description | Rating | Obsrvd (gpm) | Est. (gpm) | Ratings Struct | Clean | Remain (gpm) |
|---|---------------------|------|------------|-------------|--------|--------------|------------|----------------|-------|--------------|
| 1 | | 0.0 | DS Manhole | | | | | | | |
| 2 | | 5.0 | Joint | Roots | 4 | | 0.010 | 10 | 25 | 0.010 |
| 3 | | 7.0 | Joint | Roots | 3 | | 0.008 | 5 | 8 | 0.008 |
| 4 | | 20.0 | Joint | Roots | 3 | | 0.008 | 5 | 8 | 0.008 |
| 5 | | 22.0 | Joint | Roots | 3 | | 0.008 | 5 | 8 | 0.008 |
| 6 | | 25.0 | Joint | Roots | 3 | | 0.008 | 5 | 8 | 0.008 |
| 7 | | 29.0 | Invert | Other | | | | | | 0.000 |
| SECTION OF PVC PIPE STARTS AT THIS JOINT. | | | | | | | | | | |
| 8 | | 35.0 | Invert | Other | | | | | | |
| PVC PIPE ENDS | | | | | | | | | | |
| 9 | | 37.0 | Joint | Roots | 4 | | 0.010 | 10 | 25 | 0.010 |
| 10 | | 40.0 | Joint | Roots | 3 | | 0.008 | 5 | 8 | 0.008 |
| 11 | | 45.0 | Joint | Roots | 4 | | 0.010 | 10 | 25 | 0.010 |
| 12 | | 53.0 | Joint | Roots | 3 | | 0.008 | 5 | 8 | 0.008 |
| 13 | | 55.0 | Joint | Roots | 3 | | 0.008 | 5 | 8 | 0.008 |
| 14 | | 57.0 | Joint | Roots | 4 | | 0.010 | 10 | 25 | 0.010 |
| 15 | | 61.0 | Joint | Roots | 4 | | 0.010 | 10 | 25 | 0.010 |
| 16 | | 64.0 | Joint | Roots | 4 | | 0.010 | 10 | 25 | 0.010 |
| 17 | | 68.0 | Joint | Roots | 5 | | 0.030 | 18 | 100 | 0.030 |

WE CAN TELEVISION NO FURTHER DUE TO THE ROOTS. WE WILL REVERSE OUR SET-UP:

| Obs. # | VTR Counter Comment | Dist | Location | Description | Rating | Obsrvd (gpm) | Est. (gpm) | Ratings Struct | Clean | Remain (gpm) |
|--------|---------------------|------|--|---------------|--------|--------------|------------|----------------|-------|--------------|
| 1 | | 0.0 | US Manhole 5744-693 / tv with the flow | | | | | | | |
| 2 | | 4.0 | Crown | Crack-Radial | 3 | | 0.004 | 5 | 0 | 0.004 |
| 3 | | 10.0 | Joint | Roots | 4 | | 0.010 | 10 | 25 | 0.010 |
| 4 | | 12.0 | South | Break-In Conn | 3 | | 0.004 | 2 | 0 | 0.004 |

POSSIBLY COULD BE A CONNECTION AT 3500 E. DUNHAM

Televising stopped / (same place as above)

2-6

Television Inspection Master Report

6/24/2003
11:28:37AM

US Manhole: 5744-689
DS Manhole: 5744-688

3460 E DUNHAM AVE
3129 S CLIFTON ST

Date Insp: 2/18/2003

Basin: C01B

Dir Televised: Upstream To Downstream

Pipe Information

Shape: Round Length Status: Project No.: I-059
Dia/Ht Width: 8 0 Material: VCP Index:
Length: 175.0 Slope: 3.943 Surface:
Pipe Sec Length: Comment:

Inspection Information

Crew: 694 Percent Full: 15 Tape ID: V-3811
Weather: Sunny Purpose: TV Existing Line Counter Start: 0;0
Surface Cond: Trees & Fences Flow: Normal Flow Counter Stop:
Dyed Test: No

| Obs. # | VTR Counter Comment | Dist | Location | Description | Rating | Obsrvd (gpm) | Est. (gpm) | Ratings Struct | Clean | Remain (gpm) |
|--------|---------------------|------|---------------------|-------------|--------|--------------|------------|----------------|-------|--------------|
| 1 | | 0.0 | US Manhole 5744-689 | | | | | | | |
| 4 | | 8.0 | Joint | Roots | 2 | | 0.004 | 2 | 4 | 0.004 |
| 2 | | 12.0 | Joint | Roots | 3 | | 0.008 | 5 | 8 | 0.008 |
| 3 | | 15.0 | Joint | Roots | 3 | | 0.008 | 5 | 8 | 0.008 |
| 5 | | 20.0 | Joint | Roots | 2 | | 0.004 | 2 | 4 | 0.004 |
| 6 | | 25.0 | Joint | Roots | 2 | | 0.004 | 2 | 4 | 0.004 |
| 7 | | 33.0 | Joint | Roots | 4 | | 0.010 | 10 | 25 | 0.010 |

WE CAN GO NO FURTHER DUE TO THE ROOTS. WE WILL REVERSE OUR SET-UP.

| Obs. # | VTR Counter Comment | Dist | Location | Description | Rating | Obsrvd (gpm) | Est. (gpm) | Ratings Struct | Clean | Remain (gpm) |
|-----------------|---------------------|-------|---|------------------|--------|--------------|------------|----------------|-------|--------------|
| 1 | | 0.0 | DS Manhole 5744-688 / tv against the flow | | | | | | | |
| 2 | | 2.0 | Invert | Broken Pipe | 3 | | 0.010 | 60 | 0 | 0.010 |
| 3 | | 55.0 | Quad 2 / L-Rt | Crack-Radial | 3 | | 0.004 | 5 | 0 | 0.004 |
| 4 | | 63.0 | East | Wye Service | 1 | | 0.000 | 0 | 0 | 0.000 |
| 3121 S. CLIFTON | | | | | | | | | | |
| 5 | | 63.0 | Crown | Crack-Radial | 3 | | 0.004 | 5 | 0 | 0.004 |
| 6 | | 66.0 | Crown | Crack-Radial | 3 | | 0.004 | 5 | 0 | 0.004 |
| 7 | | 71.0 | Crown | Crack-Radial | 3 | | 0.004 | 5 | 0 | 0.004 |
| 8 | | 73.0 | Quad 1 / U-Rt | Crack-Horizontal | 3 | | 0.004 | 5 | 0 | 0.004 |
| 9 | | 95.0 | East | Wye Service | 3 | | 0.000 | 2 | 0 | 0.000 |
| 3129 S. CLIFTON | | | | | | | | | | |
| 10 | | 96.0 | Crown | Crack-Radial | 3 | | 0.004 | 5 | 0 | 0.004 |
| 11 | | 101.0 | Crown | Crack-Radial | 3 | | 0.004 | 5 | 0 | 0.004 |
| 12 | | 133.0 | Crown | Crack-Horizontal | 3 | | 0.004 | 5 | 0 | 0.004 |
| 13 | | 134.0 | Joint | Roots | 2 | | 0.004 | 2 | 4 | 0.004 |
| 14 | | 134.0 | Crown | Crack-Horizontal | 3 | | 0.004 | 5 | 0 | 0.004 |
| 15 | | 136.0 | Joint | Roots | 3 | | 0.008 | 5 | 8 | 0.008 |
| 16 | | 142.0 | Joint | Roots | 4 | | 0.010 | 10 | 25 | 0.010 |

THIS IS AS FAR AS WE NEED TO TELEVISION TO FINISH THIS LINE. / SAME PLACE AS ABOVE

2-7

Television Inspection Master Report

6/24/2003
11:28:37AM

US Manhole: 5744-697CO (cleanout)
DS Manhole: 5744-693 3500 E DUNHAM AVE

Date Insp: 8/1/2002 **Basin:** C01B

Dir Televised: Downstream To Upstream

Pipe Information

| | | | | |
|------------------|----------|----------------|--------------|----------|
| Shape: | Round | Length Status: | Project No.: | I-059 |
| Dia/Ht Width: | 6 0 | Material: | VCP | Index: |
| Length: | 80.0 | Slope: | 2.750 | Surface: |
| Pipe Sec Length: | Comment: | | | |

Inspection Information

| | | | | | |
|---------------|--------|---------------|------------------|----------------|--------|
| Crew: | 694 | Percent Full: | 10 | Tape ID: | V-3470 |
| Weather: | Sunny | Purpose: | TV Existing Line | Counter Start: | 10:25 |
| Surface Cond: | Fences | Flow: | Normal Flow | Counter Stop: | |
| Dyed Test: | No | | | | |

| Obs. # | VTR Counter Comment | Dist | Location | Description | Rating | Obsrvd (gpm) | Est. (gpm) | Ratings | | | |
|--------|---------------------|------|--|--------------|--------|--------------|------------|---------|-------|--------------|--|
| | | | | | | | | Struct | Clean | Remain (gpm) | |
| 1 | | 0.0 | DS Manhole 5744-693 / tv against the flow | | | | | | | | |
| 2 | | 15.0 | Crown | Crack-Radial | 3 | | 0.004 | 5 | 0 | 0.004 | |
| 3 | | 27.0 | Joint | Roots | 3 | | 0.008 | 5 | 8 | 0.008 | |
| 4 | | 33.0 | Joint | Roots | 3 | | 0.008 | 5 | 8 | 0.008 | |
| 5 | | 36.0 | Joint | Roots | 3 | | 0.008 | 5 | 8 | 0.008 | |
| 6 | | 37.0 | Crown | Crack-Radial | 3 | | 0.004 | 5 | 0 | 0.004 | |
| 7 | | 42.0 | Joint | Roots | 3 | | 0.008 | 5 | 8 | 0.008 | |
| 8 | | 43.0 | West | Wye Service | 1 | | 0.000 | 0 | 0 | 0.000 | |
| | 3472 E. DUNHAM | | | | | | | | | | |
| 9 | | 46.0 | Joint | Roots | 3 | | 0.008 | 5 | 8 | 0.008 | |
| 10 | | 48.0 | Joint | Roots | 3 | | 0.008 | 5 | 8 | 0.008 | |
| 11 | | 50.0 | Joint | Roots | 3 | | 0.008 | 5 | 8 | 0.008 | |
| 12 | | 55.0 | Joint | Roots | 3 | | 0.008 | 5 | 8 | 0.008 | |
| 13 | | 58.0 | Joint | Roots | 3 | | 0.008 | 5 | 8 | 0.008 | |
| 14 | | 60.0 | Joint | Roots | 3 | | 0.008 | 5 | 8 | 0.008 | |
| 15 | | 63.0 | Joint | Roots | 3 | | 0.008 | 5 | 8 | 0.008 | |
| 16 | | 68.0 | Joint | Roots | 3 | | 0.008 | 5 | 8 | 0.008 | |
| 17 | | 70.0 | Joint | Roots | 3 | | 0.008 | 5 | 8 | 0.008 | |
| 18 | | 73.0 | Joint | Roots | 3 | | 0.004 | 2 | 4 | 0.004 | |
| 19 | | 74.0 | US Cleanout (located under a concrete patio block) | | | | | | | | |

THIS IS AS FAR AS WE CAN TELEVISION DUE TO THE ROOTS IN THE C.O.

2-8