

Sta. 0+00.8, Begin Line 1  
 Core into existing manhole  
 and extend 10" SS pipe NW.  
 Seal & grout around pipe.  
 Reshape invert if necessary.  
 Cost of coring, sealing,  
 grouting & reshaping to be  
 incidental to cost of pipe.

**CAUTION!**  
 Gas Line  
 Crossing

Sta. 0+03 to Sta. 0+32  
 Flush & Vibrate Street Crossing

Saw cut, remove and  
 replace 25.0 L.F.  
 AC pavement

Install 15.0 L.F. steel  
 easement

Sta. 0+87.5, Line 1 =  
 Sta. 0+00, Line 1A  
 Const. std. manhole  
 (Outside Drop)  
 Rim Elev. = 78.20  
 Match Point

Sta. 3+32.4, Line 1 =  
 Sta. 0+00, Line 2  
 Const. std. manhole  
 (Inside Drop)  
 Rim Elev. = 76.70  
 Match Point

Sta. 4+54.3, Line 1 =  
 Sta. 0+00, Line 1B  
 Const. std. manhole  
 (Outside Drop)  
 Rim Elev. = 78.00  
 Match Point

SEWER SERVICE TABLE

NUMBER	TYPE	LOCATION			FOR INFORMATION ONLY	
		LOT NO.	BLOCK NO.	LINE NO. STATION DIRECTION	APPROXIMATE LENGTH 4" PIPE	VERTICAL HORIZONTAL
1	8" X 4" Tee Saddle	1	C	1 3+62/Rt.	8.5'	20.0'
2	8" X 4" Tee Saddle	2	C	1 4+77/Rt.	10'	16.0'
3	8" X 4" Tee Saddle	3	C	1 5+80/Lt.	10'	4.5'
4	8" X 4" Tee Saddle	7	A	1 7+08/Rt.	11.5'	10.5'
5	8" X 4" Tee Saddle	8	A	1 7+78/Rt.	12'	10.5'
6	8" X 4" Tee Saddle	9	A	1 8+49/Rt.	12'	11.0'
7	8" X 4" Tee Saddle	10	A	1 9+19/Rt.	12.5'	11.5'
8	8" X 4" Tee Saddle	11	A	1 9+89/Rt.	12.5'	11.5'

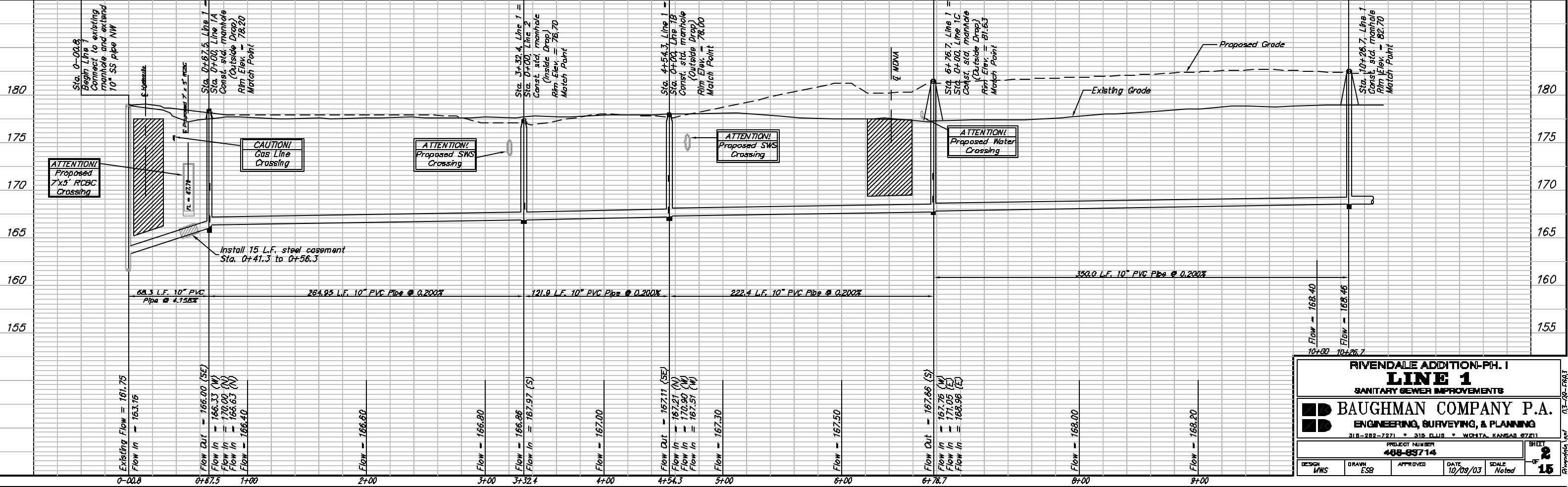
NOTE: Vertical Riser Pipe shall be extended to 2' minimum above ground water elevation and 4' maximum below proposed ground elevation.

Scale: 1" = 40' Horizontal  
 1" = 5' Vertical  
 \* = Iron

Benchmark #1  
 City of Wichita Benchmark Disc,  
 Hydraulic and 55th Street South,  
 42.00' North of Centerline, 40.70'  
 West of Centerline, 3.70' North of  
 centerline of Power Pole, 58.20'  
 Northwest of Southeast Corner, Sec.  
 21, Twp. 28-S, R-1-E  
 Elev. = 76.19 City Datum  
 Elev. = 1263.59 (NGVD29)

All front load sewers will require  
 trench to be backfilled with sand  
 and flushed. Cost shall be  
 incidental to cost of sewer pipe.

Sta. 10+26.7, Line 1 =  
 Const. std. manhole  
 Rim Elev. = 82.70  
 Match Point



**RIVENDALE ADDITION-PH. I**  
**LINE 1**  
 SANITARY SEWER IMPROVEMENTS

**BAUGHMAN COMPANY P.A.**  
 ENGINEERING, SURVEYING, & PLANNING  
 318-282-7271 • 318-ELIUS • WICHITA, KANSAS 67261

PROJECT NUMBER: **488-93714**

DESIGN: MWS    DRAWN: ESP    APPROVED: [Signature]    DATE: 10/09/03    SCALE: Noted

SHEET **2** OF **15**