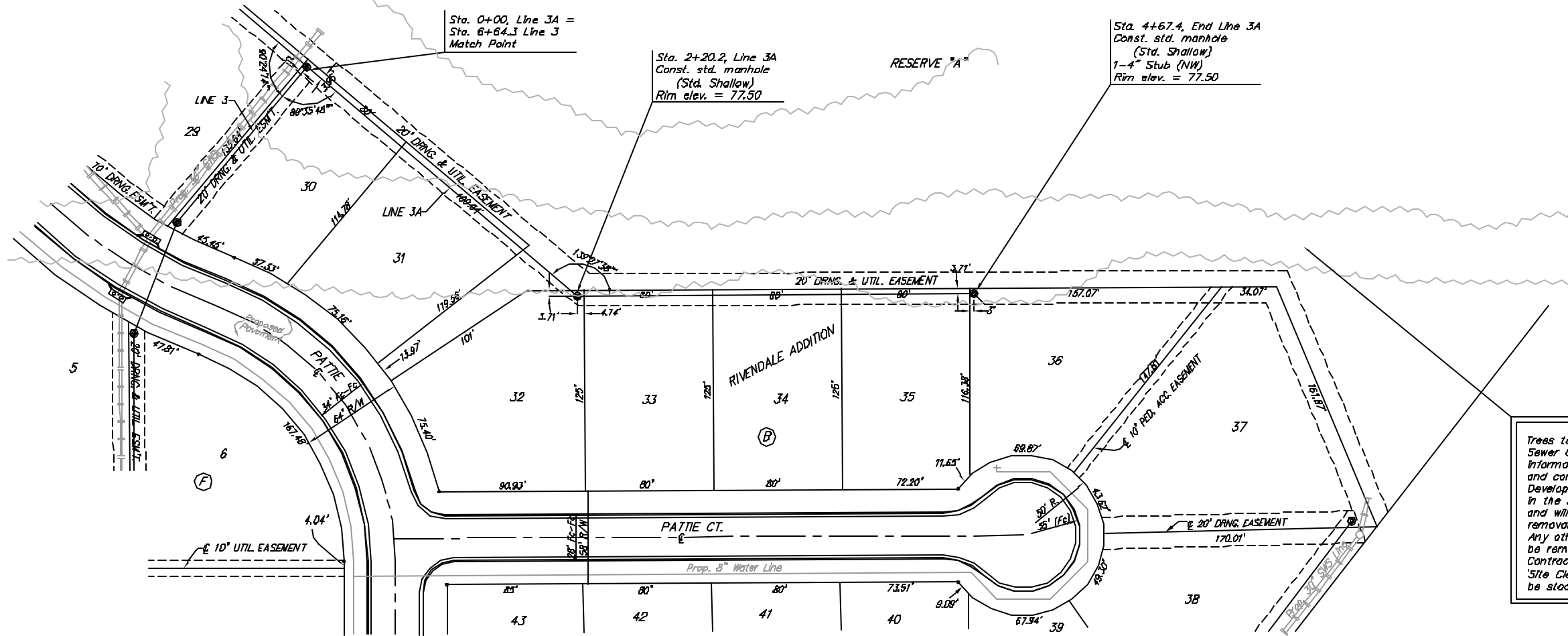
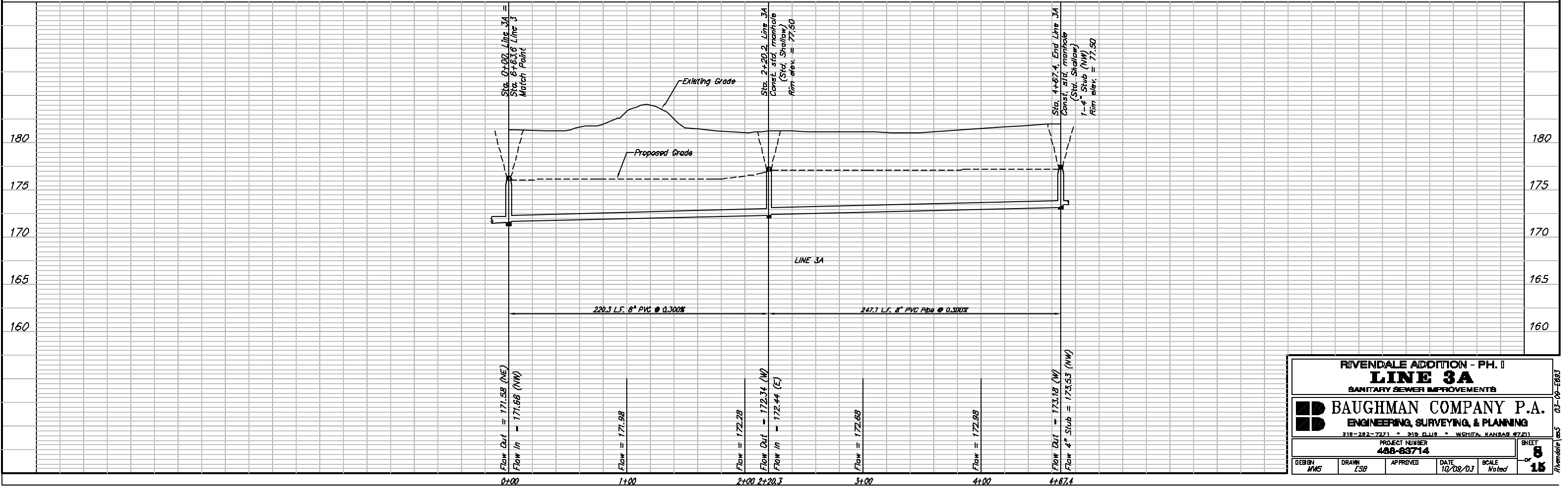


Benchmark #1
 City of Wichita Benchmark Disc,
 Hydraulic and 55th Street South,
 42.00' North of Centerline, 40.70'
 West of Centerline, 3.70' North of
 centerline of Power Pole, 58.20'
 Northwest of Southeast Corner, Sec.
 21, Twp. 28-S, R-1-E.
 Elev. = 76.19 City Datum
 Elev. = 1263.59 (NGVD29)



Scale: 1" = 40' Horizontal
 1" = 5' Vertical
 * = Iron

Trees to be removed prior to Sanitary Sewer Construction. Trees are shown for information only. Contractor shall visit site and confirm trees have been removed. Developer will clear all brush and tree piles in the southern half of the development and will be responsible for their complete removal prior to start of construction. Any other trees that remain and need to be removed shall be removed by the Contractor. Cost shall be incidental to 'Site Clearing and Restoration'. Trees may be stockpiled on Site.



RIVENDALE ADDITION - PH. I
LINE 3A
 SANITARY SEWER IMPROVEMENTS

BAUGHMAN COMPANY P.A.
 ENGINEERING, SURVEYING, & PLANNING

316-282-7271 • 316 PLUS • WICHITA, KANSAS 67211

PROJECT NUMBER
488-83714

DESIGN: MWS DRAWN: ESB APPROVED: DATE: 10/08/03 SCALE: Noted

SHEET
 OF 15

Rivendale 1053 03-00-ER63