

PLOTTER: Thursday, December 26, 2013 8:01:51 PM

GENERAL NOTES

- UNLESS SHOWN OR STATED OTHERWISE ON THESE DRAWINGS, MATERIALS AND CONSTRUCTION SHALL BE IN ACCORDANCE WITH CITY OF WICHITA STANDARD SPECIFICATIONS.
- CONTRACTOR WILL BE REQUIRED TO PROVIDE A MINIMUM ADVANCE NOTICE OF SEVENTY-TWO (72) HOURS TO UTILITY COMPANIES PRIOR TO STARTING ANY EXCAVATION AS FOLLOWS:

KANSAS ONE-CALL 1-800-344-7233
or 687-2470 (LOCAL WICHITA)

THE CONTRACTOR MUST NOTIFY THE FOLLOWING IN CASE OF AN EMERGENCY:

AT&T (TELEPHONE)	800-870-8390
COX COMMUNICATIONS (CABLE)	262-0661
KANSAS GAS SERVICE (GAS)	832-3101
C.O.W. PUBLIC WORKS & UTILITIES	262-6000
WESTAR (ELECTRIC)	383-8600
BLACK HILLS ENERGY (GAS)	800-303-0357

- THE CONTRACTOR SHALL BE RESPONSIBLE FOR PRESERVING PROPERTY IRONS. THE CONTRACTOR WILL BE REQUIRED TO RE-ESTABLISH ANY PROPERTY IRONS WHICH ARE DAMAGED OR DESTROYED BY HIS CONSTRUCTION OPERATIONS. SUCH IRONS SHALL BE RE-ESTABLISHED BY A LICENSED LAND SURVEYOR IN ACCORDANCE WITH STATE LAWS.
- EXISTING UTILITIES AND THEIR LOCATIONS, AS SHOWN ON THE PLANS REPRESENT THE BEST INFORMATION OBTAINABLE FOR DESIGN. LOCATION INFORMATION HAS BEEN OBTAINED FROM THE VARIOUS UTILITY COMPANIES AND IS EITHER FROM COMPANY RECORD DRAWINGS OR COMPANY PROVIDED FIELD LOCATIONS. THE PLAN LOCATIONS SHOWN ARE NOT GUARANTEED. ADDITIONAL EXISTING UTILITIES MAY ALSO BE ENCOUNTERED.
- RUBBLE FROM THE REMOVAL OF MISCELLANEOUS STRUCTURES AND EXCESS EXCAVATION WHICH IS TO BE WASTED SHALL BE DISPOSED OF ON SITES TO BE PROVIDED BY THE CONTRACTOR. THESE SITES SHALL BE APPROVED BY THE ENGINEER AS TO SUITABILITY, APPEARANCE AND SITE LOCATION. LOCATIONS THAT, IN THE OPINION OF THE ENGINEER, WILL LEAVE AN UNSIGHTLY APPEARANCE WILL NOT BE APPROVED. ALL DISPOSAL SITES MUST BE APPROVED BY THE KANSAS DEPARTMENT OF HEALTH AND ENVIRONMENT. MATERIAL EITHER STOCKPILED OR DISPOSED OF IN A FLOOD PLAIN WOULD REQUIRE A KANSAS STATE BOARD OF AGRICULTURE PERMIT. ANY MATERIAL DUMPED IN WATERS OF THE UNITED STATES OR WETLANDS IS SUBJECT TO U.S. CORPS OF ENGINEERS PERMITTING REGULATIONS. ANY MATERIAL BURIED OR STOCKPILED BEYOND APPROVED CONSTRUCTION LIMITS WOULD REQUIRE ADDITIONAL ARCHAEOLOGICAL INVESTIGATIONS UNLESS BURIED IN A PREVIOUSLY APPROVED BORROW LOCATION.
- COST OF EXCAVATION, HAULING, AND DUMPING OF EXCESS EXCAVATION SHALL BE SUBSIDIARY TO THE PROJECT.
- A PORTION OF EXCESS EXCAVATED MATERIAL SHALL BE MOUNDED AROUND MANHOLES WHICH EXTEND MORE THAN ONE (1) FOOT ABOVE THE EXISTING GROUND. SUCH MOUNDS SHALL BE CONSTRUCTED WITH A SIX (6) FOOT DIAMETER FLAT TOP WITH 4 TO 1 SIDE SLOPES DOWN TO THE ORIGINAL GROUND. THE ELEVATION OF THE FLAT TOP OF THE MOUND SHALL BE 0.4 FOOT BELOW THE TOP OF THE MANHOLE.
- ALL STUBS AND PLUGGED PIPES SHALL BE LOCATED WITH GREEN PLASTIC TAPE IN THE SAME MANNER AS RISERS.
- CONNECTING TO EXISTING MANHOLES: PRIOR TO LAYING SEWER LINES USING EXISTING STUBS IN EXISTING MANHOLES, THE CONTRACTOR SHALL EXPOSE AND VERIFY THE ELEVATION, GRADE AND ALIGNMENT OF EXISTING STUBS AND NOTIFY THE ENGINEER OF ANY DEVIATION FROM THE PLAN. WHERE CONNECTION TO AN EXISTING MANHOLE THAT DOES NOT HAVE AN EXISTING STUB OR THE STUB IS UNUSABLE DUE TO ELEVATION GRADE OR ALIGNMENT, THE CONTRACTOR SHALL BORE CUT INTO EXISTING MANHOLE WALL TO MAKE CONNECTION USING APPROVED WATER STOP GASKET, AND RESHAPE THE EXISTING MANHOLE INVERT TO PROVIDE SMOOTH FLOW. THE COST OF CONNECTING TO EXISTING MANHOLES IS INCIDENTAL TO THE PROJECT.
- TREES AND SHRUBS IN PUBLIC RIGHT-OF-WAY WHICH ARE IN DIRECT CONFLICT WITH PROPOSED NEW CONSTRUCTION SHALL BE REMOVED BY THE CONTRACTOR WITH THE ENGINEER'S APPROVAL. TREES AND SHRUBS WHICH ARE NOT IN DIRECT CONFLICT WITH PROPOSED NEW CONSTRUCTION SHALL BE SAVED AND PROTECTED FROM DAMAGE.
- ALL DISTURBED AREAS TO BE SEEDED WITH RYE GRASS AT A RATE OF 200 LBS. PER ACRE WITHIN 10 DAYS OF CONSTRUCTION. CONTRACTOR TO PREPARE GROUND PER CITY SPECIFICATIONS. COST IS SUBSIDIARY TO SITE PREPARATION AND RESTORATION.
- PORTIONS OF THE WORK ON THIS PROJECT ARE IN PROXIMITY TO EXISTING UNDERGROUND UTILITIES AND ABOVE GROUND UTILITY APPURTENANCES, AS WELL AS WITHIN DEVELOPED LOTS WITH FENCES AND GRASS. THE CONTRACTOR SHALL CONTACT EACH AFFECTED UTILITY COMPANY AND SHALL ACCOMMODATE/SUPPORT UTILITY FACILITIES AS REQUIRED AND RE-ESTABLISH GRASSED AREA DISTURBED BY CONSTRUCTION WITH THE SAME TYPE OF VEGETATION CURRENTLY ESTABLISHED. THE COST OF UTILITY ACCOMMODATION SHALL NOT BE A PAY ITEM, BUT WILL BE CONSIDERED SUBSIDIARY TO THE COST OF INSTALLING SANITARY SEWER PIPE. THE COST OF REMOVAL AND REPLACEMENT OF EXISTING FENCES AND VEGETATION SHALL NOT BE A PAY ITEM, BUT WILL BE CONSIDERED SUBSIDIARY TO THE COST OF SITE CLEARING AND RESTORATION.
- DEVELOPER FOR THIS PROJECT IS:
PERFECTION SIGNATURE PROPERTIES, LLC
11828 W. CENTRAL, SUITE 124
WICHITA, KS 67212
SCOTT LEHNER/JASON RONK
(316)729-1900

SANITARY SEWER

TO SERVE

COURTYARDS @ AUBURN HILLS

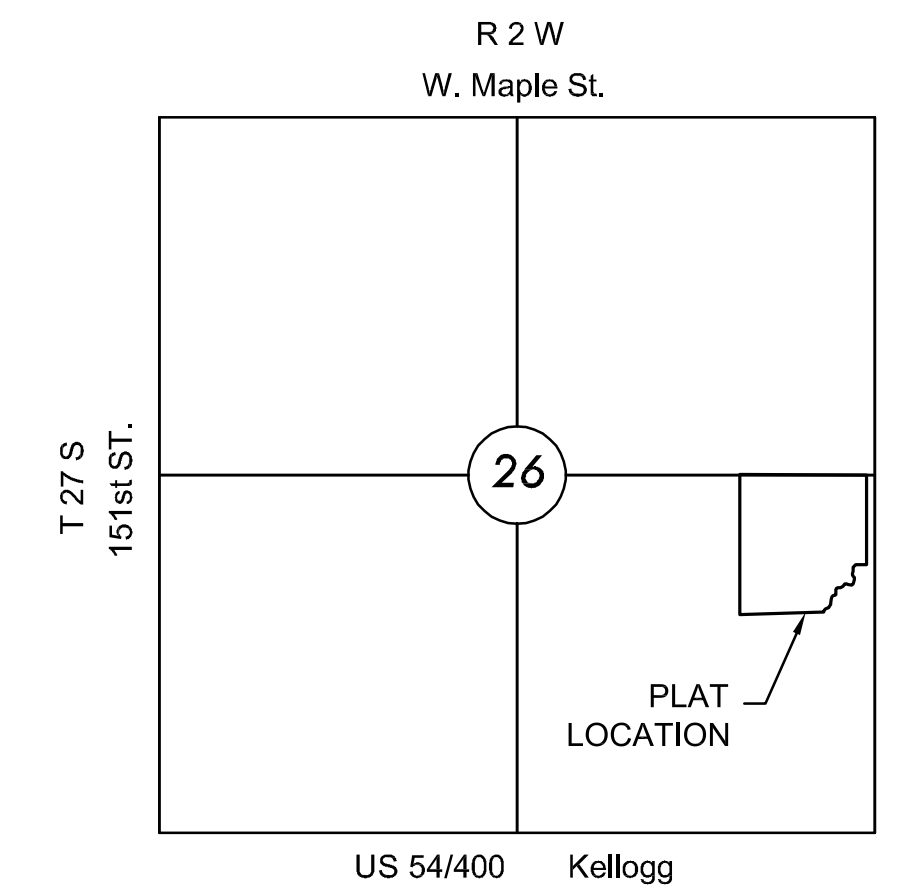
LATERAL 63, COWSKIN INTERCEPTOR

PROJECT NO. 468-84917

THE CITY OF WICHITA, KANSAS
GARY JANZEN, P.E. - CITY ENGINEER

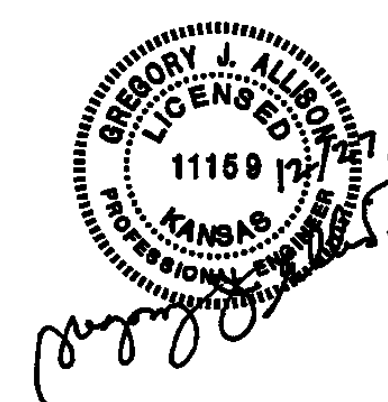
OCA NO. 744362

Nowak Construction - Contractor
D. Cowing - City of Wichita, Field Project Engineer
J. Koleczek - City of Wichita, Inspector
As-built
Stubs & Risers
Release Date: 4/14/2014
pdf: APRosas 8/28/2014



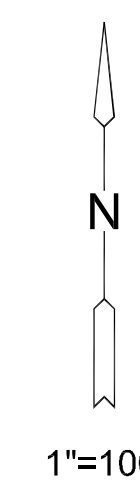
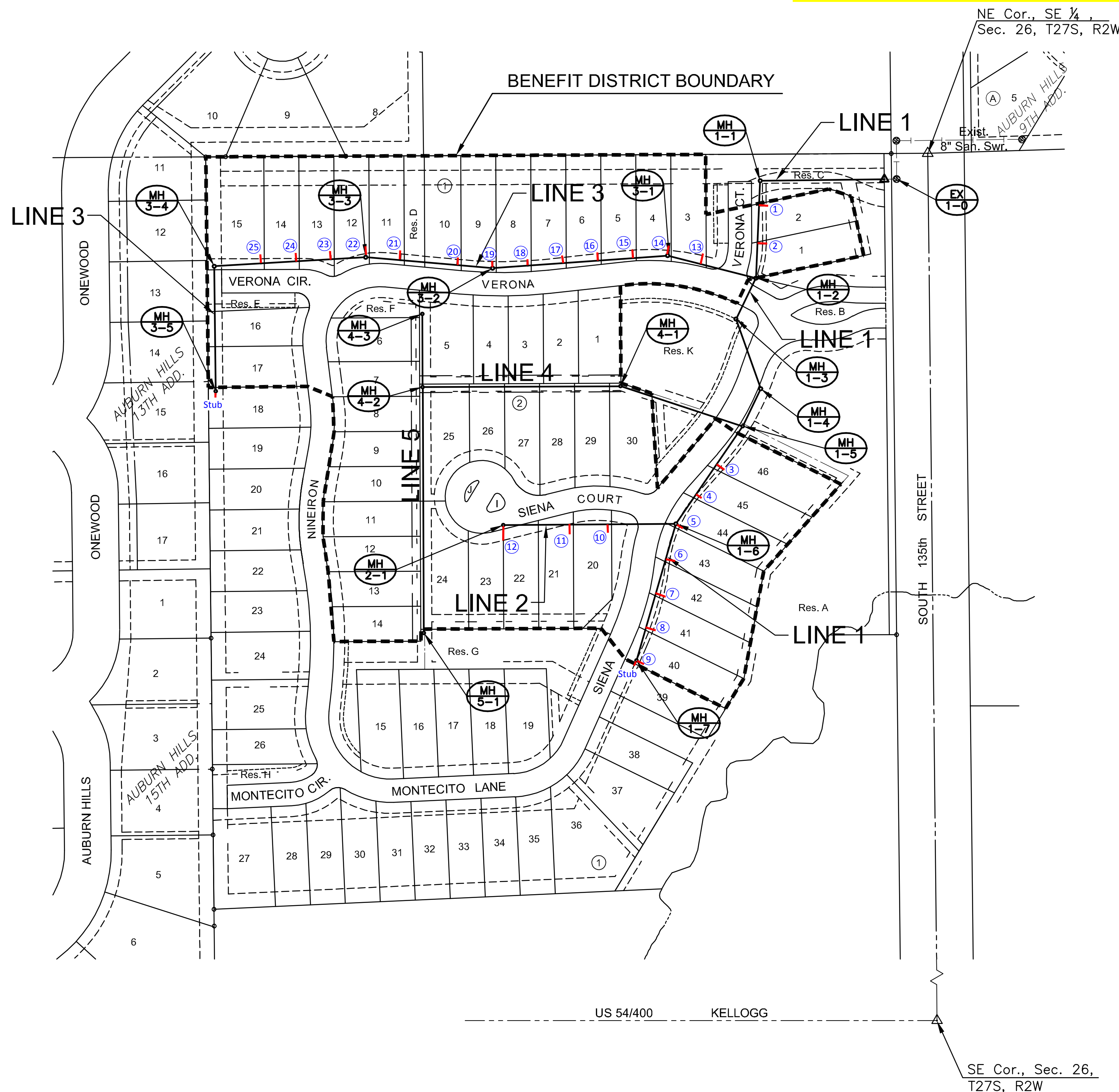
VICINITY MAP

No Scale



INDEX TO DRAWINGS

SHEET NO.	DESCRIPTION
1	TITLE SHEET
2-4	SS DETAILS
5	LINE 1 PLAN & PROFILE
6	LINE 2 PLAN & PROFILE
7	LINE 3 PLAN & PROFILE
8	LINE 4 PLAN & PROFILE
9	LINE 5 PLAN & PROFILE
10-11	BUBBLE MAP
12-16	BMP SHEETS
17	FINAL PLAT



SANITARY SEWER PLANS FOR
COURTYARDS @ AUBURN HILLS
 PHASE 1

©2013
MKEC Engineering
All Rights Reserved
www.mkec.com
These drawings and their contents, including, but not limited to, all concepts, designs, & ideas are the exclusive property of MKEC Engineering (MKEC), and may not be used or reproduced in any way without the express consent of MKEC.

TITLE SHEET

PROJECT NO.	468-84917	
DATE	DEC. 2013	
SCALE	1"=100'	
DESIGNED	DRAWN	CHECKED
SPE	SPE	GJA
NO.	REVISION	DATE
SHEET NO.		
1 OF 17		

J:\PROJECTS\2013\1301010232_PERFECTION_COURTYARDS_AT_AUBURNHILLS\CAD\PHASE 1\15292_BT.DWG