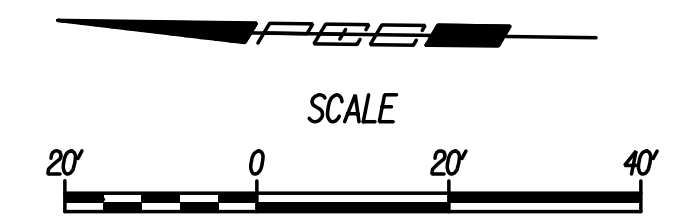


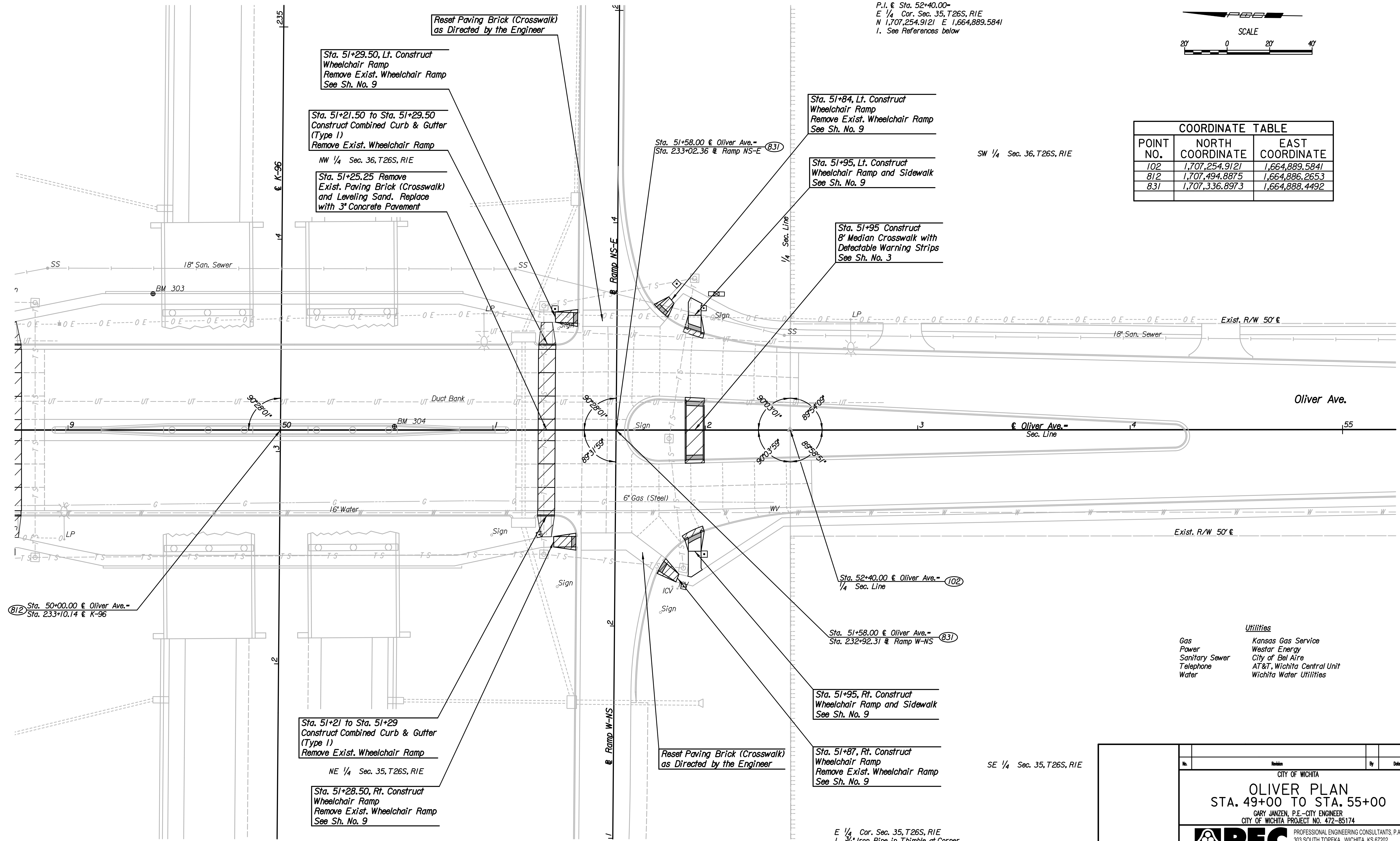
P.I. @ Sta. 52+40.00=  
 E 1/4 Cor. Sec. 35, T26S, R1E  
 N 1,707,254.9121 E 1,664,889.5841  
 1. See References below



COORDINATE TABLE		
POINT NO.	NORTH COORDINATE	EAST COORDINATE
102	1,707,254.9121	1,664,889.5841
812	1,707,494.8875	1,664,886.2653
831	1,707,336.8973	1,664,888.4492

SW 1/4 Sec. 36, T26S, R1E

SE 1/4 Sec. 35, T26S, R1E



- Utilities**
- Gas Kansas Gas Service
  - Power Westar Energy
  - Sanitary Sewer City of Bel Aire
  - Telephone AT&T, Wichita Central Unit
  - Water Wichita Water Utilities

- E 1/4 Cor. Sec. 35, T26S, R1E
1. 3/4" Iron Pipe in Thimble at Corner
  2. Nail & Flasher in NE Side of Power Pole 42.05' SE
  3. Nail & Flasher in SE Side of Power Pole 68.18' NE
  4. 2 Nails in Fence Post 49.90' W

BM \*303 - Chiseled "D" on Retaining Wall, North side of K-96 Bridge, East side of Oliver. 6' Lt. @ Sta. 49+40 NAVD 88 Elev.=1366.97

BM \*304 - Chiseled "D" on South side of K-96 Bridge, Center of Oliver on Median Wall. 2' Lt. @ Sta. 50+54 NAVD 88 Elev.=1366.24

Plotted By: svb Date: 7/2/2014 9:55:56 AM  
 FILE: U:\Wichita-Civil\2013\13675\000\Trans\Road\VDGN Project\Plan\13675-Oliver-Plan 49.dgn

No.	Revision	By	Date
CITY OF WICHITA			
<b>OLIVER PLAN</b>			
<b>STA. 49+00 TO STA. 55+00</b>			
GARY JANZEN, P.E.-CITY ENGINEER			
CITY OF WICHITA PROJECT NO. 472-85174			
PROFESSIONAL ENGINEERING CONSULTANTS, P.A. 303 SOUTH TOPEKA WICHITA, KS 67202 316-262-2691 www.pec1.com			
Designed by	SAC	Job No.	13675
Drawn by	SVB	Date	May, 2014
			Sht. 6 of 28