

Private Storm Sewer Plans

for:



AutoZone Store No. 6317

3320 North Rock Road
Wichita, Kansas 67226

217 PPD (O.C.A. NO. 607861)
GARY JANZEN, P.E., CITY ENGINEER

AS BUILTS	
Contractor: McCullough Excavation, Inc. 8/26/2014	Project Inspector: Larry Gann KEMILLER ENGINEERING PA 117 E. Lewis, Wichita, KS 67202 (316)264-0242

Owner (Proposed):

AutoZone Development Corporation
Jeff Kauerz, Project Manager
123 S. Front Street, 3rd Floor
Memphis, Tennessee 38103
(901) 495-8717

Applicant / Developer / Lessee:

AutoZone Development Corp.
Jeff Kauerz, Project Manager
123 S. Front Street, 3rd Floor
Memphis, Tennessee 38103
(901) 495-8717

Civil Engineer/Coordinating Professional Contact:

Treanor Architects, P.A.
Matthew L. Murphy, P.E.
1040 Vermont Street
Lawrence, Kansas 66044
(785) 842-4858

Plan Release Date:

04 DECEMBER 2013

STORM WATER COMPLIANCE

DISTURBED AREA: 0.967 ACRES
PROJECT PROPERTY AREA: 1.14 ACRES
EXISTING DEVELOPMENT IMPERVIOUS: 0.872 ACRES
PROPOSED DEVELOPMENT IMPERVIOUS: 0.655 ACRES

DETENTION - NOT REQUIRED (REDUCTION IN EXIST. IMPERVIOUS)
CALCULATED WATER QUALITY PEAK FLOW RATE - NA
CHANNEL PROTECTION VOLUME - NA

WATER QUALITY NOT REQUIRED - LESS THAN 1 ACRE DISTURBED
DEVELOPMENT COMPLIES WITH 16.32 OF CITY CODE.



KANSAS ONE CALL
Call Before You Dig!
811

UTILITY CONTACTS

WATER AND SEWER: CITY OF WICHITA PUBLIC WORKS
316-262-6000
GAS: KANSAS GAS AND ELECTRIC COMPANY
316-383-8600
ELECTRIC: WESTAR ENERGY
1-800-778-9140
TELEPHONE: COX COMMUNICATIONS
316-755-4042
CRUDE OIL PIPELINE: COFFEYVILLE RESOURCES, LLC
620-251-4000

INDEX OF DRAWINGS

- | | |
|---|-----------------------------|
| 1 | COVER SHEET |
| 2 | EROSION CONTROL PLAN |
| 3 | EROSION CONTROL DETAILS |
| 4 | SITE GRADING PLAN |
| 5 | STORM SEWER PLAN & PROFILES |
| 6 | STORM SEWER DETAILS |

BENCHMARK

METAL DISC IN THE SOUTHEAST QUADRANT OF THE CONCRETE BASE OF THE TRAFFIC SIGNAL IN THE MEDIAN OF ROCK ROAD ON THE SOUTH SIDE OF THE INTERSECTION OF ROCK ROAD AND THE EASTBOUND ACCESS RAMP OF KANSAS STATE HIGHWAY 96. ELEVATION = 1392.19 (NAVD 88)

FLOODPLAIN

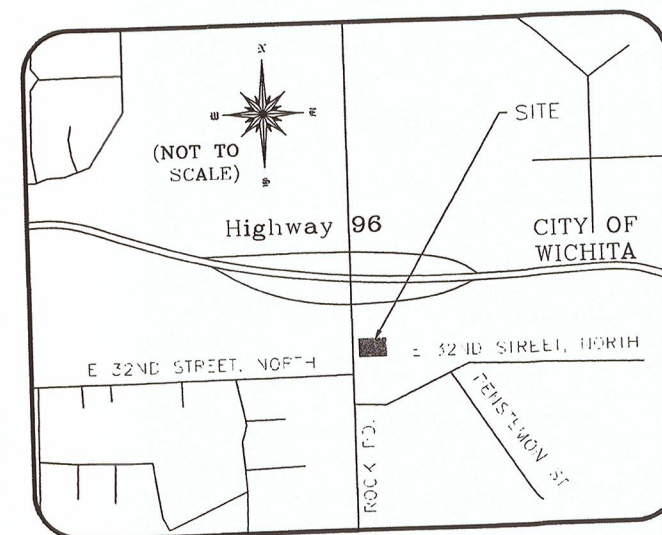
SUBJECT LOT DOES NOT FALL IN A SPECIAL FLOOD ZONE, PER FEMA MAP PANEL NUMBER 20173-C-0376-E, EFFECTIVE DATE, 2/02/2007. THE PROPERTY IS IN ZONE X.

APPROVED AS NOTED
BY CITY ENGINEER OF WICHITA

SANITARY SEWERS _____
STORM SEWERS _____
BY CITY ENGINEER *San David 3-6-14*
BY STORM WATER ENGINEER *08/26/14*
DRIVEWAY/APPROACHES _____
WATER MAINS _____
PAVING _____

NOTE TO CONTRACTOR

INSPECTIONS AND TESTING FOR THIS PROJECT IS TO BE PROVIDED BY A LICENSED CONSULTING ENGINEERING FIRM UNDER CONTRACT WITH THE OWNER/DEVELOPER. SAID INSPECTION TO BE IN ACCORDANCE WITH THE CITY OF WICHITA STANDARD CONSTRUCTION ENGINEERING PRACTICES AND CERTIFIED BY A LICENSED PROFESSIONAL ENGINEER. NO WORK SHALL BE PERFORMED IN DEDICATED EASEMENTS OR THE PUBLIC RIGHT-OF-WAY BY THE CONTRACTOR WITHOUT SAID INSPECTION NOR SHALL ANY WORK BE COMMENCED IN DEDICATED EASEMENTS OR PUBLIC RIGHT-OF-WAY WITHOUT WRITTEN AUTHORIZATION BY THE CITY ENGINEER.



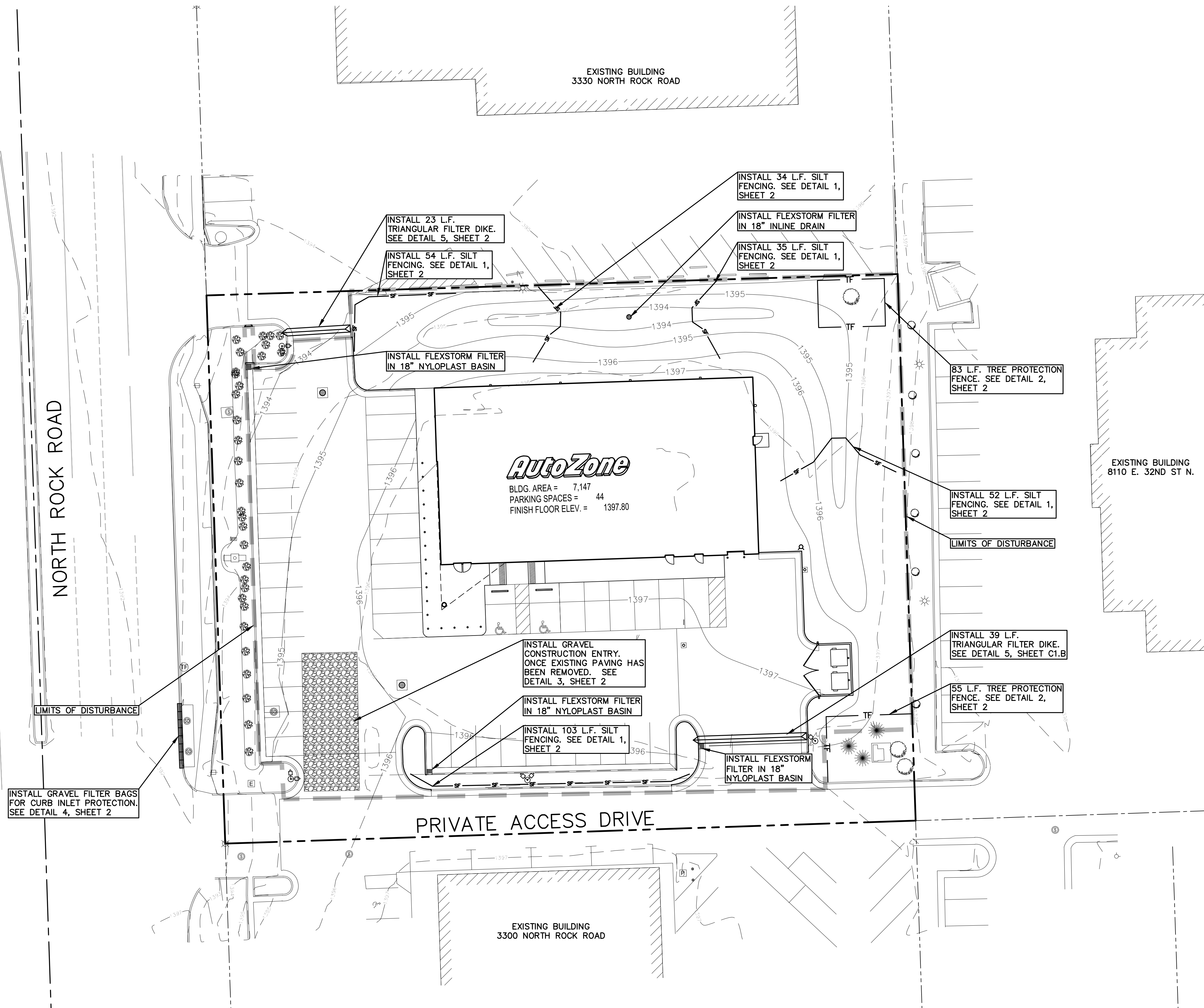
VICINITY MAP
NOT TO SCALE

REVISIONS	
1	CITY COMMENTS
2	CITY COMMENTS - COVER SHEET
3	
4	2014-01-02
5	2014-03-05
6	
AutoZone PRIVATE STORM SEWER PLANS For Bidding & Construction Information Contact: McCullough - Hill Construction Tel. 615-564-1000 www.construction.com	
Store No. 6317 3320 NORTH ROCK ROAD WICHITA, KANSAS 67226	
COVER SHEET	
Civil Engineer: Matthew L. Murphy License No. 19180	
 1040 Vermont Street Lawrence, Kansas 66044 Phone: 785.842.4858 www.treanorarchitects.com	
12 / 04 / 2013	
1	

FILE NAME: P:\CET\1010.DWG AutoZone - 6317 Wichita, KS Rock Road V3 Drawings\AutoCAD\Sheets\Storm Sewer Plans\COVER SHEET.DWG LAST SAVED BY: Matt. Murphy SAVED DATE: 3/6/2014 8:43 AM PLOTTED: 3/6/2014 9:39 AM

14109

FILE NAME: P:\CE13.010.008 AutoZone - 6317 Wichita, KS Rock Road\3_Drawings\1_AutoCAD\Sheets\Storm Sewer Plans\2 EROSION CONTROL PLAN.DWG LAST SAVED BY: Natalie Martell SAVED DATE: 1/22/2014 4:53 PM PLOTTED: 2/6/2014 8:41 AM

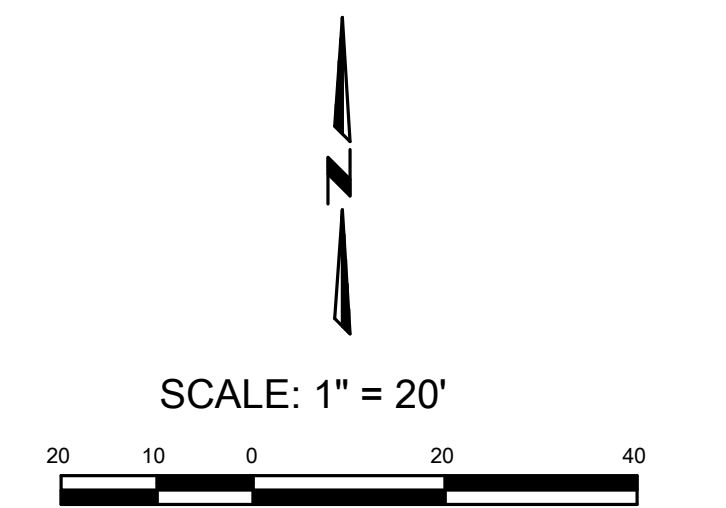


- EROSION CONTROL NOTES:**
1. THE EROSION CONTROL FEATURES AND NOTES SHOWN ON THESE PLANS REPRESENT THE MINIMUM REQUIREMENTS ACCEPTABLE.
 2. IT SHALL BE THE CONTRACTOR'S RESPONSIBILITY TO PLACE ADDITIONAL CONTROL DEVICES AS REQUIRED DURING CONSTRUCTION TO PREVENT SOIL LOSS FROM THE SITE. IT SHALL ALSO BE EACH CONTRACTOR'S RESPONSIBILITY TO MAINTAIN THEIR EROSION CONTROL FEATURES IN PROPER WORKING CONDITION UNTIL THE SITE IS STABILIZED BY PAVEMENT, VEGETATION, SOD OR OTHER GROUND STABILIZATION MEANS.
 3. SILT FENCES SHALL BE PLACED ON A CONTOUR ELEVATION ALONG THE DOWNHILL SIDE AND FOR THE FULL EXTENT OF THE DISTURBED AREAS WITHIN THE CONSTRUCTION LIMITS. THE LAST TEN FEET ON EACH END OF RUN OF SILT FENCE SHALL BE PLACED FACING UPHILL AT 90 DEGREES TO THE CONTOUR LINE.
 4. THE CONTRACTOR SHALL PREVENT SILT AND SEDIMENT FROM ENTERING NATURAL CHANNELS, WATER BODIES AND THE MUNICIPAL STORM SEWER SYSTEM.
 5. WITHOUT ADVERSELY AFFECTING CONSTRUCTION OPERATIONS, THE CONTRACTOR SHALL MINIMIZE THE AMOUNT OF SURFACE AREA WHICH IS EXPOSED AT ONE TIME. LEAVE GRADED AREAS WITH A ROUGH TEXTURE, CONSTRUCT TEMPORARY TERRACES DURING GRADING OPERATIONS, AND LIMIT UNNECESSARY VEHICLE TRAFFIC IN GRADED AREAS.
 6. THE SPILLAGE OF DEBRIS, INCLUDING THE TRACKING OF SOIL OUTSIDE THE CONSTRUCTION LIMITS SHALL BE AVOIDED. THEREFORE, THE CONTRACTOR SHALL PROVIDE STABILIZED GRAVEL DRIVES AT ALL ACCESS LOCATIONS.
 7. GENERAL CONTRACTOR WILL BE RESPONSIBLE FOR MARKING ALL LIMITS OF DISTURBANCE AND WILL NOT DISTURB VEGETATIVE COVER OUTSIDE OF THESE LIMITS.
 8. SILT FENCE SHALL BE RELOCATED IMMEDIATELY DOWNSTREAM OF ANY ADDITIONAL GRADING OR TRENCHING REQUIRED TO COMPLETE WORK
 9. THE CONTRACTOR SHALL BE RESPONSIBLE FOR IMPLEMENTATION, INSPECTION, AND MAINTENANCE OF ALL BEST MANAGEMENT PRACTICES (BMPs) AS SHOWN ON THE APPROVED STORMWATER POLLUTION PREVENTION PLAN (SWP3).
 10. INSPECTION OF BMPs SHALL OCCUR AT LEAST ONCE PER WEEK AND WITHIN 24 HOURS AFTER A RAINFALL OF ONE HALF OF AN INCH OR MORE AS MEASURED AT THE SITE.
 11. MAINTENANCE OF BMPs SHALL INCLUDE NECESSARY REPAIRS, REMOVAL OF SEDIMENT, AND ANY NECESSARY MODIFICATIONS TO BMPs AS DETERMINED BY THE CONTRACTOR, ENGINEER, OR AUTHORIZED CITY PERSONNEL.
 12. TOPSOIL MUST BE STOCKPILED UPSTREAM OF SILT FENCE.
 13. SEEDING, MULCHING AND FERTILIZING SHALL CONFORM WITH THE SPECIFICATIONS. SILT FENCE SHALL REMAIN IN PLACE UNTIL ALL DISTURBED AREAS HAVE BEEN STABILIZED BY MATURE VEGETATION.
 14. UPON FINAL GRADING, ALL DISTURBED AREAS SHALL BE STABILIZED BY SEEDING AND MULCH WITHIN ONE WEEK. WHEN THIS OCCURS OUTSIDE THE STANDARD SPECIFICATION SEEDING DATES, SEED SHALL CONSIST OF A TEMPORARY COVER CROP OF ANNUAL RYE OR WHEAT. ALL SEEDED AREAS SHALL BE MULCHED PER STANDARD SPECIFICATIONS.
 15. ALL PERIMETER SILT FENCE, EARTH DIKES, SEDIMENT BASINS, AND ROCK CONSTRUCTION ENTRANCES WILL BE INSTALLED BEFORE GRADING OPERATIONS BEGIN, EXCEPT THAT SILT FENCE WHICH IS TO BE PLACED ALONG THE BACK OF CURB FOR PROTECTION OF THE STREET, SILT FENCE AND EARTH DIKES THAT ARE PLACED BEFORE GRADING BEGINS WILL BE MAINTAINED BY THE GRADING CONTRACTOR UNTIL ALL UTILITIES ARE IN PLACE. THE SILT FENCE THAT IS PLACED ALONG THE BACK OF THE CURB OR RIGHT -OF-WAY WILL BE INSTALLED IMMEDIATELY AFTER THE CURB IS CONSTRUCTED.

- CONSTRUCTION SEQUENCING**
1. INSTALL ALL PERIMETER EROSION CONTROL MEASURES.
 2. INSTALL CONSTRUCTION ENTRANCE PAD, IF EXISTING PAVING NOTED TO BE REMOVED IS NOT UTILIZED FOR CONSTRUCTION ACCESS OR STAGING. REFER TO D1.0 FOR DEMOLITION LIMITS.
 3. PRECONSTRUCTION MEETING.
 4. CLEAR AND GRUB SITE, COMPLETE ROUGH GRADING.
 5. CONSTRUCT UTILITY, BUILDING, AND SITE IMPROVEMENTS.
 6. STABILIZE ALL DISTURBED AREAS AS SPECIFIED ON THE LANDSCAPE PLAN OR TO EXISTING CONDITIONS.
 7. REMOVE TEMPORARY CONTROL MEASURES ONCE FINAL STABILIZATION IS ACHIEVED.

LEGEND

	SILT FENCE (SEE DETAIL 1, SHEET C1.B)
	TREE PROTECTION FENCE (SEE DETAIL 2, SHEET C1.B)
	LIMITS OF DISTURBANCE
	EXISTING ELEVATION CONTOUR
	PROPOSED ELEVATION CONTOUR
	TRIANGULAR FILTER DIKE (SEE DETAIL 4, SHEET C1.B)
	GRAVEL FILTER BAGS (SEE DETAIL 8, SHEET C1.B)
	CONSTRUCTION ENTRY (SEE DETAIL 2, SHEET C1.B)



© COPYRIGHT 2013

REVISIONS	
NO.	CITY COMMENTS
1	
2	
3	
4	2014-01-22
5	
6	

AutoZone PRIVATE STORM SEWER PLANS

Store No. 6317
3320 NORTH ROCK ROAD
WICHITA, KANSAS 67226

For Bidding & Construction Information Contact:
McCrave - Hill Construction
Tel. 615-884-1017
www.construction.com

TREANOR ARCHITECTS P.A.
1040 Vermont Street
Lawrence, Kansas 66044-2920
Office: 785.842.4858
Fax: 785.842.7536
www.treanorarchitects.com

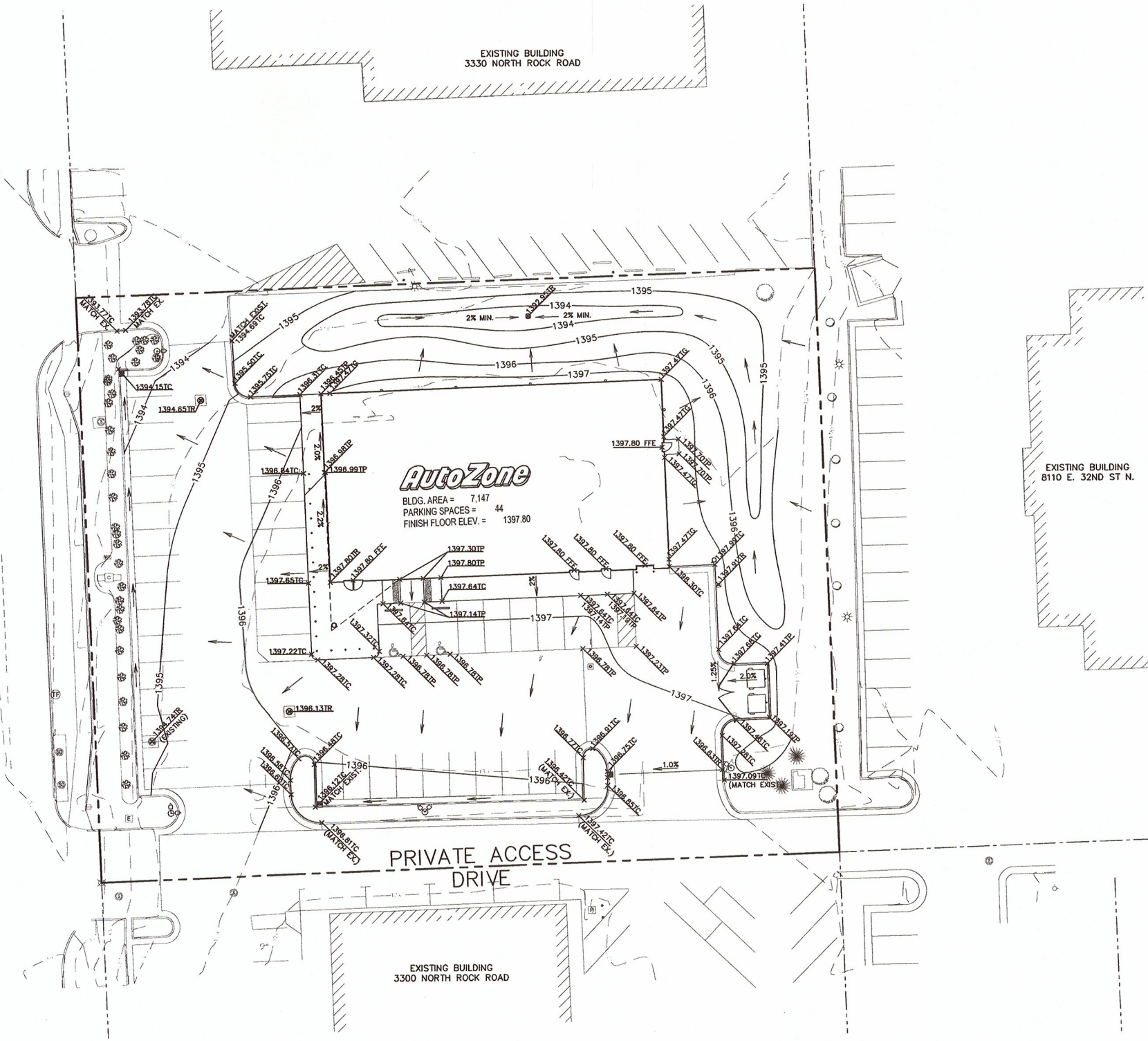
Civil Engineer:
Matthew L. Murphy
License No. 19180

12 / 04 / 2013

2

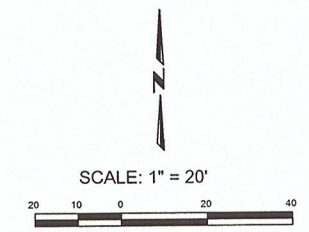
FILE NAME: P:\CE13.010.008 AutoZone - 6317 Wichita, KS Rock Road\3 Drawings\AutoCAD\Sheets\Storm Sewer Plans\Site Grading Plan.DWG LAST SAVED BY: Natalie Morrell SAVED DATE: 1/22/2014 4:53 PM PLOTTED: 2/6/2014 8:41 AM

NORTH ROCK ROAD



BENCHMARKS
 HORIZONTAL DATUM—BASIS OF BEARINGS IS THE CENTERLINE OF ROCK ROAD WHICH IS ALSO THE WEST LINE OF THE SOUTHWEST QUARTER OF SECTION 32, TOWNSHIP 26 SOUTH, RANGE 2 EAST OF THE 6TH PRINCIPAL MERIDIAN, WITH A BEARING OF N01°56'58.8933"W CALCULATED FROM KANSAS STATE PLANES COORDINATES, USING KANSAS SOUTH ZONE.
 VERTICAL DATUM—NAVD '88 DATUM. PROJECT BENCH MARK IS A METAL DISC IN THE SOUTHEAST QUADRANT OF THE CONCRETE BASE OF THE TRAFFIC SIGNAL IN THE MEDIAN OF ROCK ROAD ON THE SOUTH SIDE OF THE INTERSECTION OF ROCK ROAD AND THE EASTBOUND ACCESS RAMP OF KANSAS STATE HIGHWAY 96.
 ELEVATION = 1392.19

- LEGEND**
- ▷ PROPOSED YARD HYDRANT
 - PROPOSED AREA DRAIN
 - PROPOSED STORM MANHOLE
 - PROPOSED STORM DRAIN
 - PROPOSED CLEAN OUT
 - ⊙ EXISTING SANITARY SEWER MANHOLE
 - ⊕ EXISTING STORM DRAIN MANHOLE
 - ⊗ EXISTING WATER MANHOLE
 - ⊙ EXISTING FIRE HYDRANT
 - ⊕ EXISTING ELECTRICAL UTILITY BOX
 - DIRECTION OF RUNOFF
 - 918- EXISTING ELEVATION CONTOUR
 - 918- PROPOSED ELEVATION CONTOUR
 - TC TOP OF CURB ELEVATION
 - TG TOP OF GROUND ELEVATION
 - TP TOP OF PAVEMENT ELEVATION
 - TR TOP OF RIM ELEVATION



© COPYRIGHT 2013

REVISIONS	
1	CITY COMMENTS
2	
3	
4	2014-01-22
5	
6	

AutoZone PRIVATE STORM SEWER PLANS
 For Bidding & Construction
 Information Contact:
 McGraw - Hill Construction
 Tel: 615-884-1017
 www.construction.com

Store No. 6317
 3320 NORTH ROCK ROAD
 WICHITA, KANSAS 67226

TREANOR ARCHITECTS P.A.
 1040 Vermont Street
 Lawrence, Kansas 66044-2920
 Office: 785.842.4858
 Fax: 785.842.7536
 www.treanorarchitects.com

Civil Engineer:
 Matthew L. Murphy
 License No. 19180

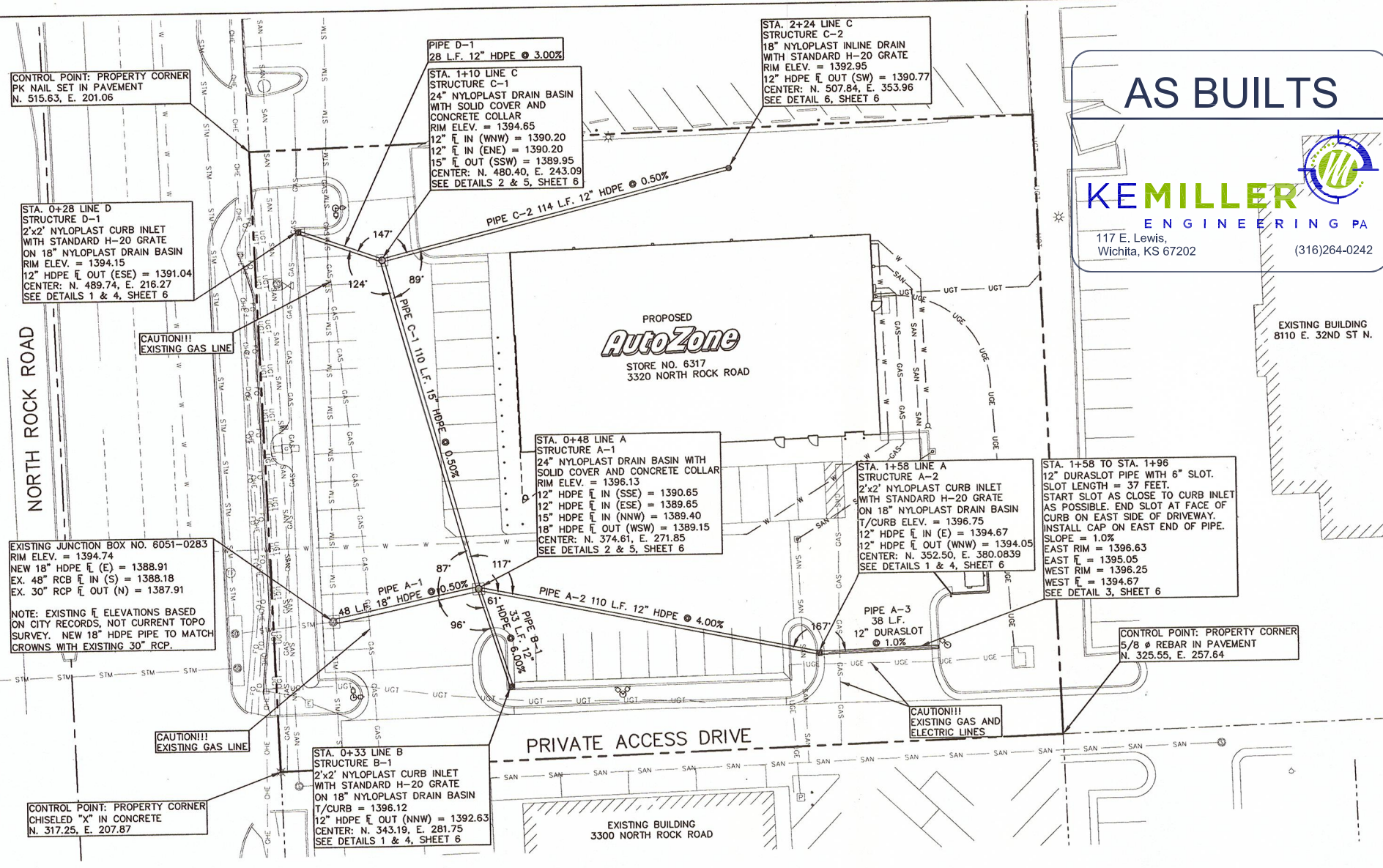


12 / 04 / 2013

4

14105

FILE NAME: p:\cel\1010.00b autozone - 6317 wichita, ks rock road\3_drawings\1_autozone\storm sewer\plans\5_PLAN & PROFILE.DWG. LAST SAVED BY: Kevin Spore SAVED DATE: 2/16/2014 9:35 PM PLOTTED: 2/16/2014 9:36 PM



AS BUILTS

KEMILLER ENGINEERING PA

117 E. Lewis,
Wichita, KS 67202

(316)264-0242

- NOTES:**
1. AN ATTEMPT HAS BEEN MADE TO LOCATE ALL UTILITY MANHOLES, METER COVERS, AND OTHER SUCH UTILITY ITEMS FROM SURVEY INFORMATION. UNDERGROUND UTILITY LINES AND STRUCTURES SHOWN ARE PER RECORDS MADE AVAILABLE BY THE OWNER, UTILITY COMPANY OR MUNICIPALITY, AND BY FIELD OBSERVATION WHERE POSSIBLE. ALL MUNICIPALITIES AND UTILITY COMPANIES SHOULD BE NOTIFIED BY CONTRACTOR FOR FIELD LOCATION OF ALL UTILITIES PRIOR TO CONSTRUCTION. THE CONTRACTOR IS SOLELY RESPONSIBLE FOR DETERMINING ACTUAL LOCATIONS AND ELEVATIONS OF ALL UTILITIES, INCLUDING SERVICE LINES PRIOR TO CONSTRUCTION. THE CONTRACTOR SHALL CONTACT KANSAS ONE CALL (800-344-7233) AT LEAST 72 HOURS BEFORE THE START OF WORK AND VERIFY ALL EXISTING UTILITY LOCATIONS. EMERGENCY CONTACT INFORMATION FOR UTILITY PROVIDERS IS LOCATED ON SHEET 1.
 2. LOCATION OF UTILITIES IS NOT GUARANTEED AND THE CONTRACTOR SHALL USE EXTREME CAUTION DURING EXCAVATION, USING HAND EXCAVATION AS NECESSARY TO LOCATE AND PROTECT UTILITY LINES.
 3. CONTRACTOR IS RESPONSIBLE FOR FIELD VERIFICATION OF ALL INFORMATION SHOWN ON PLANS AND ANY REPAIRS, AS NEEDED.
 4. ANY PROPERTY MONUMENTATION DISTURBED BY THE PROJECT SHALL BE RESET BY A LICENSED LAND SURVEYOR.
 5. PROPER COORDINATION WITH THE RESPECTIVE UTILITY COMPANIES SHALL BE PERFORMED BY THE CONTRACTOR TO INSURE THAT ALL UTILITY COMPANY, LOCAL MUNICIPALITY AND LOCAL COUNTY STANDARDS FOR MATERIALS AND CONSTRUCTION METHODS ARE MET.
 6. THE CONTRACTOR SHALL ARRANGE FOR AND COORDINATE WITH THE RESPECTIVE UTILITY COMPANIES FOR SERVICE INSTALLATIONS AND CONNECTIONS AND MAIN SERVICE RELOCATIONS. THE CONTRACTOR SHALL COORDINATE THE WORK TO BE PERFORMED BY THE VARIOUS UTILITY COMPANIES AND SECURE ALL PERMITS AND PAY ALL FEES FOR CONNECTIONS, DISCONNECTIONS, RELOCATIONS, INSPECTIONS AND DEMOLITION AS NECESSARY.
 7. CONTRACTOR SHALL PROVIDE ALL BENDS, FITTINGS, ADAPTERS, ETC.
 8. ALL UTILITY CONSTRUCTION IS SUBJECT TO INSPECTION PRIOR TO APPROVAL FOR BACKFILL IN ACCORDANCE WITH THE APPROPRIATE UTILITY COMPANY, LOCAL MUNICIPALITY AND/OR LOCAL COUNTY REQUIREMENTS.
 9. THE CONTRACTOR SHALL RESTORE ANY STRUCTURE, PIPE, PAVEMENT, CURBS, SIDEWALKS, APPROPRIATE LANDSCAPE AREAS, ETC. DISTURBED DURING CONSTRUCTION TO THE ORIGINAL CONDITION OR BETTER.
 10. IN THE EVENT OF CONFLICT OF ANY REQUIREMENTS OR PROVISIONS OF THE WORK INDICATED HEREIN, TREANOR ARCHITECTS SHALL BE NOTIFIED IMMEDIATELY FOR A DETERMINATION OF THE PLAN REQUIREMENTS AND INTENT THEREOF.
 11. ALL HDPE PIPE SHALL BE DUAL WALL WITH SMOOTH INTERIOR.
 12. ALL EXCAVATION AND WASTE MATERIAL TO BE DISPOSED MUST BE DONE AT A SITE APPROVED BY THE KANSAS DEPARTMENT OF HEALTH AND ENVIRONMENT.
 13. WASTE MATERIAL CAN NOT BE STORED IN A FEMA REGULATED FLOODPLAIN WITHOUT A PERMIT.
 14. TRAFFIC CONTROL SHALL BE IN ACCORDANCE WITH THE MANUAL ON UNIFORM TRAFFIC CONTROL DEVICES (MUTCD), LATEST EDITION.
 15. DISTURBED AREAS ADJACENT TO PUBLIC RIGHT-OF-WAY SHALL BE SODDED.

REVISIONS	
NO.	DESCRIPTION
1	CITY COMMENTS
2	
3	
4	2014-01-22
5	
6	

AutoZone PRIVATE STORM SEWER PLANS

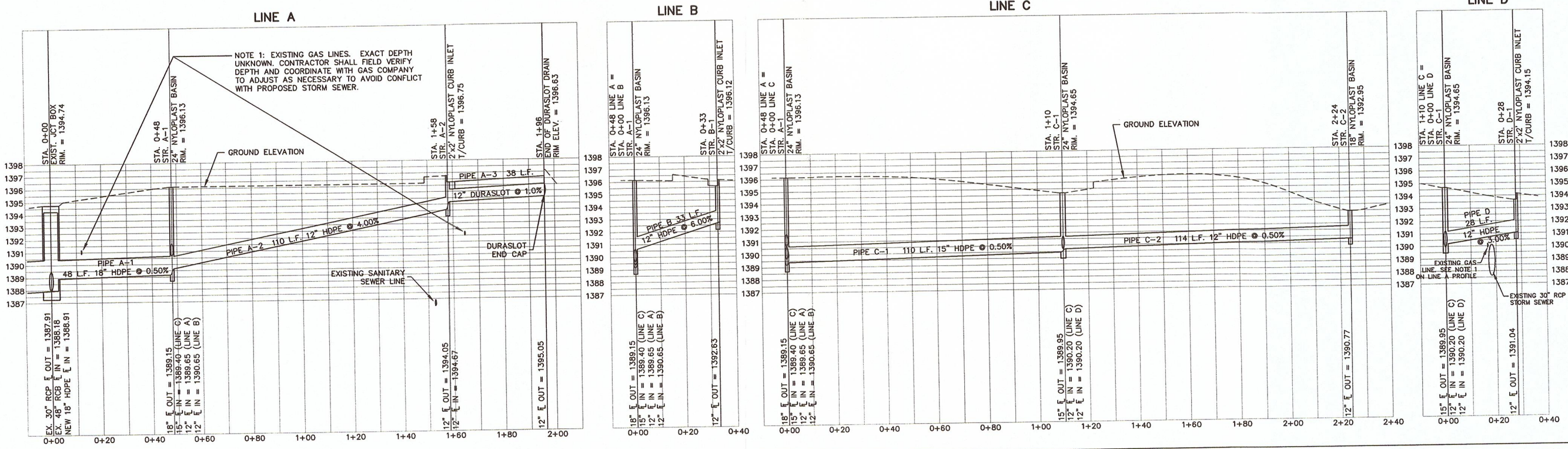
Store No. 6317
3320 NORTH ROCK ROAD
WICHITA, KANSAS 67226

TREANOR ARCHITECTS P.A.
Civil Engineer:
Matthew L. Murphy
License No. 19180

1040 Vermont Street
Lawrence, Kansas 66044-2920
Office: 785.842.4858
Fax: 785.842.7536
www.treanorarchitects.com

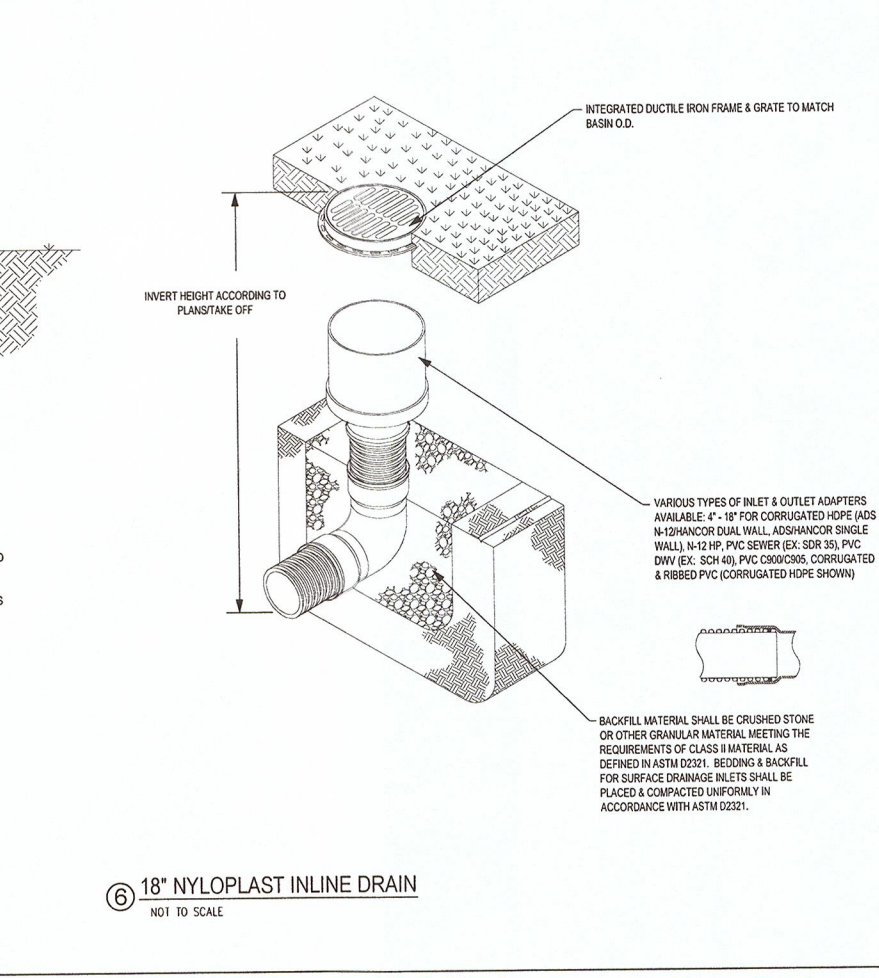
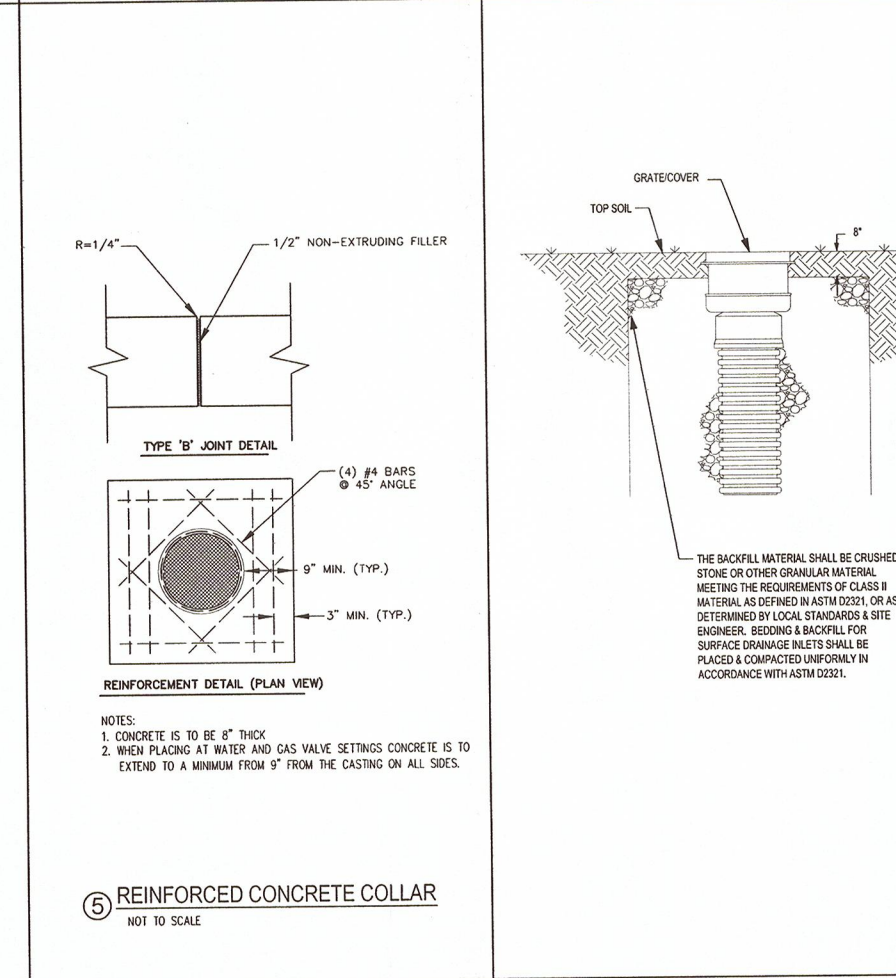
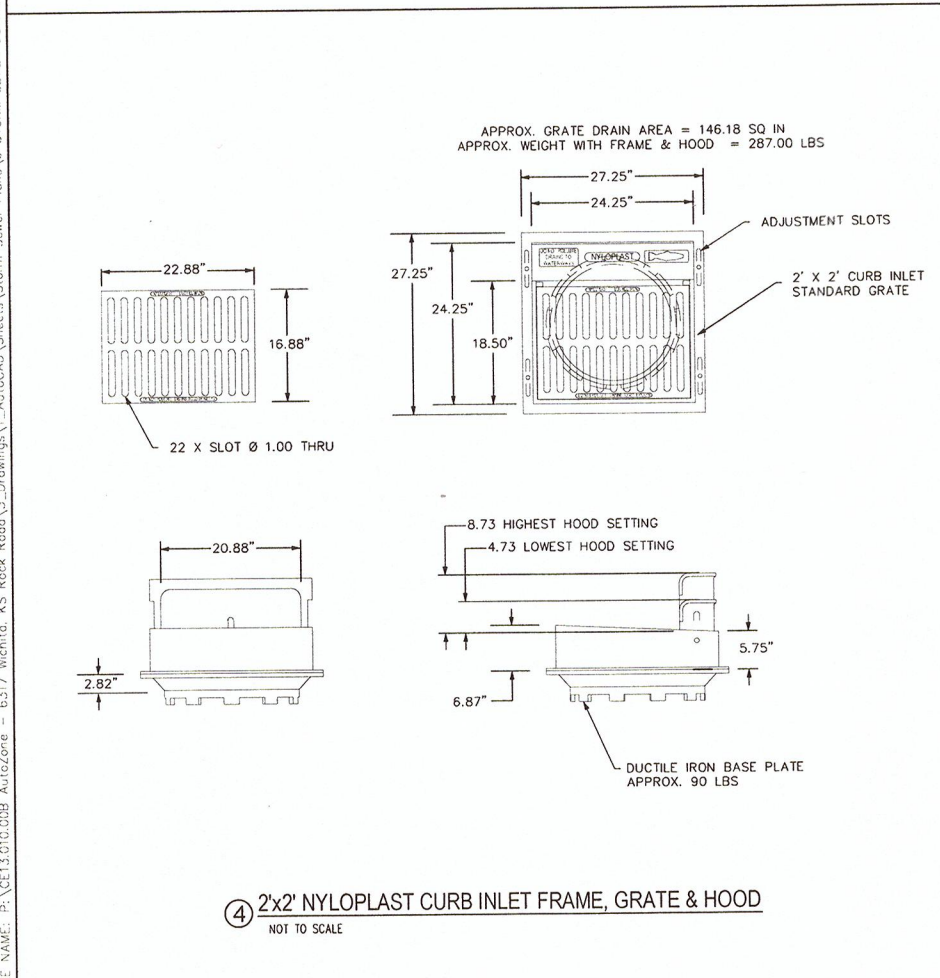
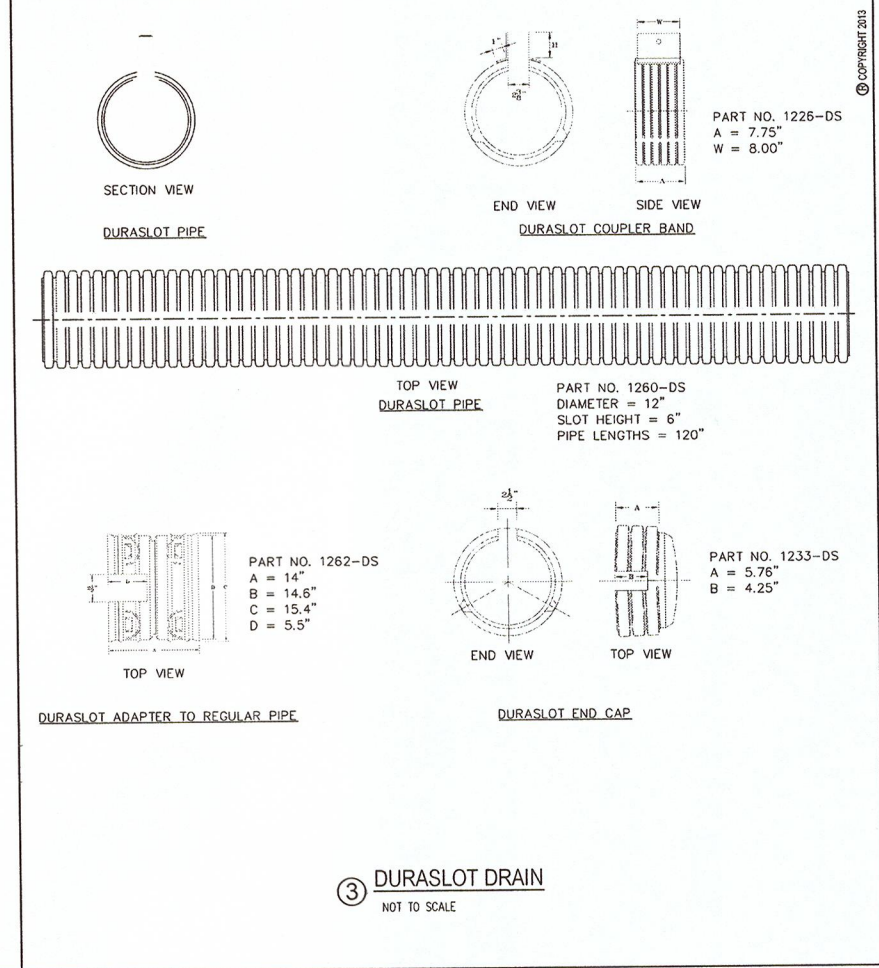
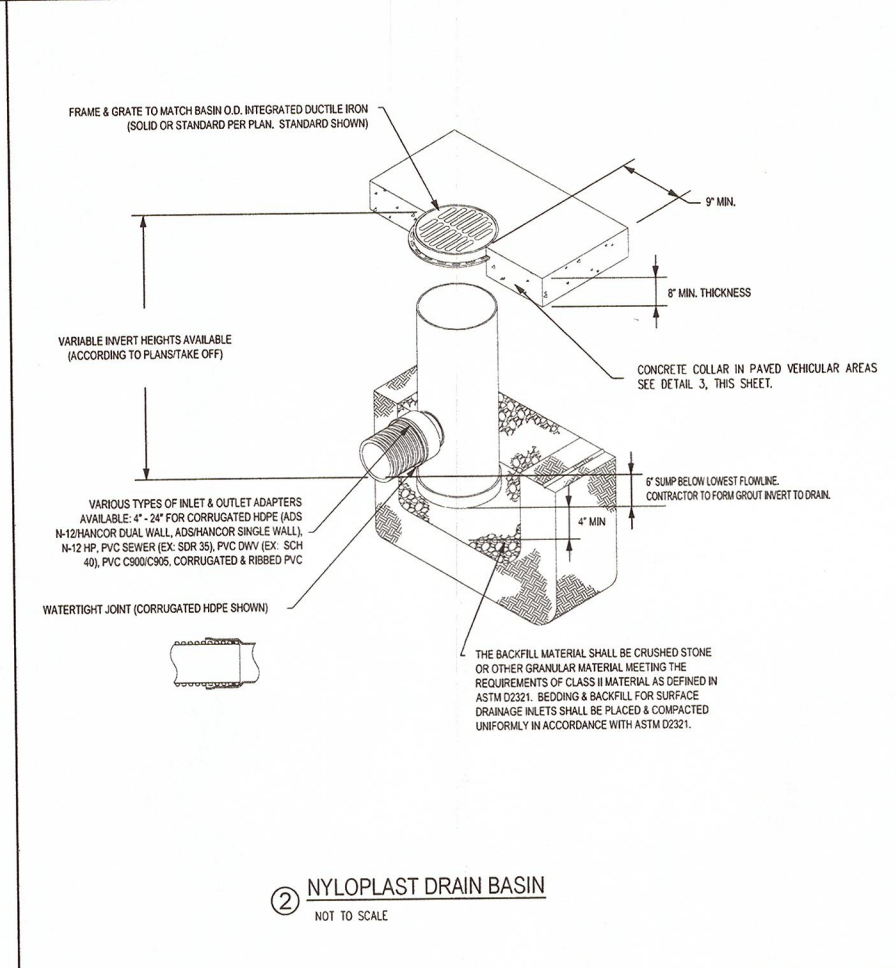
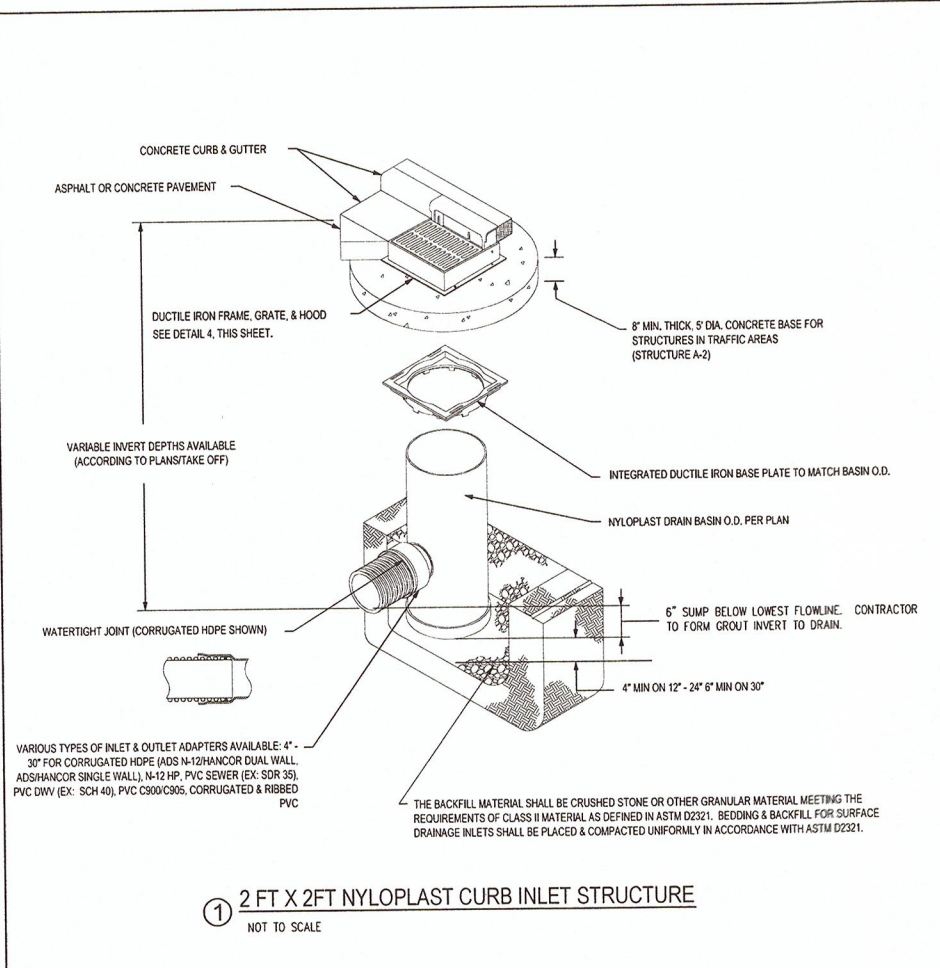


12/04/2013



14105

FILE NAME: P:\CE13.D10.C08 AutoZone - 6317 Wichita, KS Rock Road_3_Drawings\1_AutoCAD\Sheets\Storm Sewer Plans\6 Storm Sewer Details.DWG LAST SAVED BY: Natalie Morrell SAVED DATE: 1/22/2014 4:55 PM PLOTTED: 2/6/2014 9:42 AM



REVISIONS		1	2	3	4	5	6
	CITY COMMENTS				2014-01-22		

AutoZone PRIVATE STORM SEWER PLANS
 For Bidding & Construction
 Information Contact:
 McGraw - Hill Construction
 Tel: 615-884-1017
 www.construction.com

Store No. 6317
 3320 NORTH ROCK ROAD
 WICHITA, KANSAS 67226

AutoZone
 Civil Engineer:
 Matthew L. Murphy
 License No. 19180

TREANOR ARCHITECTS P.A.
 1040 Vermont Street
 Lawrence, Kansas 66044-2920
 Office: 785.842.4858
 Fax: 785.842.7536
 www.treanorarchitects.com

MATTHEW L. MURPHY
 LICENSED PROFESSIONAL ENGINEER
 19180
 KANSAS

12 / 04 / 2013

6

1465