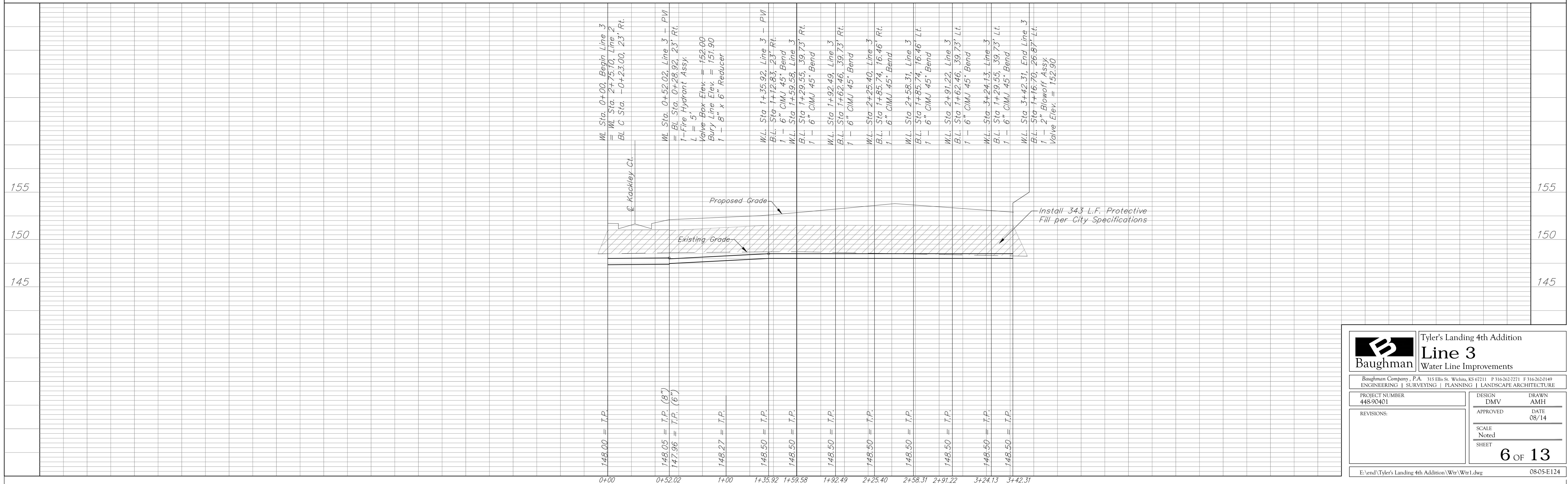
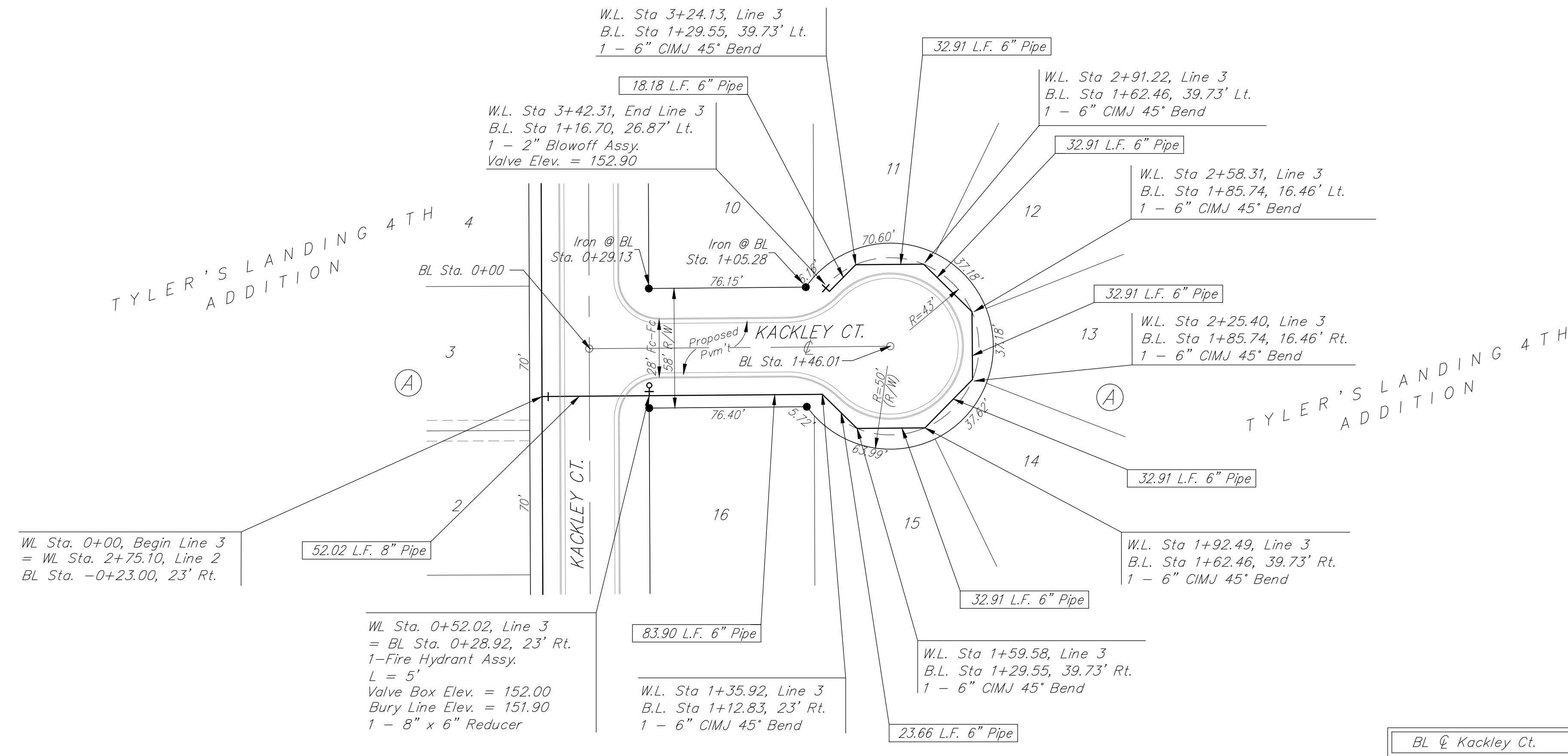


Benchmarks:
 BM #1: " " Cut in Middle of Curb
 Inlet Top, North Curb of Conrey,
 Adjacent to SW Corner of Lot 14,
 Block A, Tyler's Landing 3rd Addition.
 Elev. = 150.29 (City Datum)
 BM #2: " " Cut in Top of East Curb
 of High Point, 10' South of End of
 Return. Adjacent to Lot 1, Block D,
 Tyler's Landing Addition.
 Elev. = 155.28 (City Datum)



		Tyler's Landing 4th Addition	
		Line 3	
Baughman Company, P.A. 315 Ellis St. Wichita, KS 67211 P 316-262-7271 F 316-262-0149		ENGINEERING SURVEYING PLANNING LANDSCAPE ARCHITECTURE	
PROJECT NUMBER 448-90401	DESIGN DMV	DRAWN AMH	DATE 08/14
REVISIONS:	APPROVED	SCALE Noted	SHEET
			6 OF 13
E:\end\Tyler's Landing 4th Addition\Wtr\Wtr L.dwg			08-05-E124