

STREET PAVING FOR MILSTEAD W/ STREETS & INCIDENTAL STORM WATER SEWER IMPROVEMENTS

FLAT CREEK ADDITION - PHASE III

CITY OF WICHITA, KANSAS

Neil D. Gable, P.E. City Engineer

MILSTEAD: From the E.L. of Lot 17, Block D,
South to the S.L. of the Plat.

LOTUS: From the E.L. of Milstead,
East to the E.L. of the Plat.

MILSTEAD CT: From the W.L. of Milstead,
West to and including the cul-de-sac,
(Lots 26-34, Block D)

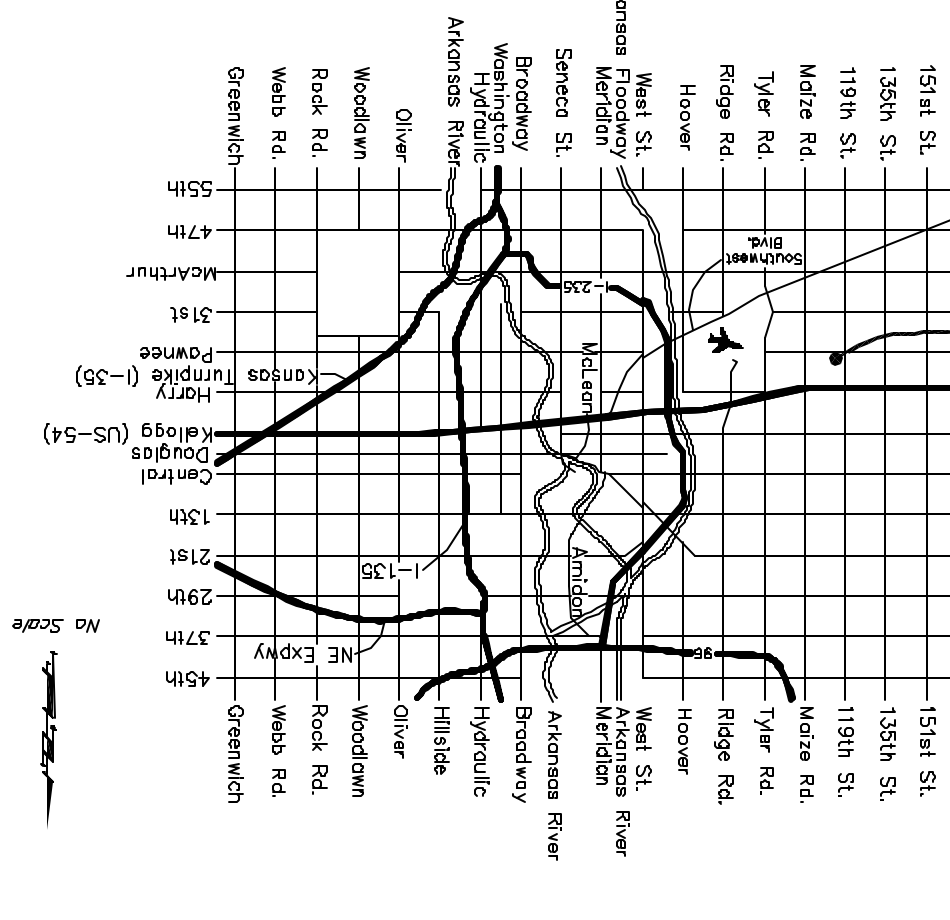
MILSTEAD CT: From the W.L. of Milstead,
West to and including the cul-de-sac,
(Lots 35-43, Block D)

MILSTEAD CT: From the W.L. of Milstead,
West to and including the cul-de-sac,
(Lots 44-53, Block D)

Project Number
472-83385

O.C.A. Number
765824

Site
44
43
42
41
40
39
38
37
36
35
34
33
32
31
30
29
28
27
26
25
24
23
22
21
20
19
18
17
16
15
14
13
12
11
10
9
8
7
6
5
4
3
2
1



Vicinity Map

Boundaries

Return of SE corner of Lot 17 & Parkridge.
Elev. = 145.99 (City Datum)

"□" Cut in top of curb, east
Hydrant in S.E. Curb Return to Fire
Grant & Milstead.
Elev. = 146.09 (City Datum)

"X" Cut in Top of Curb at
South End of Golden Hills Ct.
Cul-de-sac.
Elev. = 147.73 (City Datum)

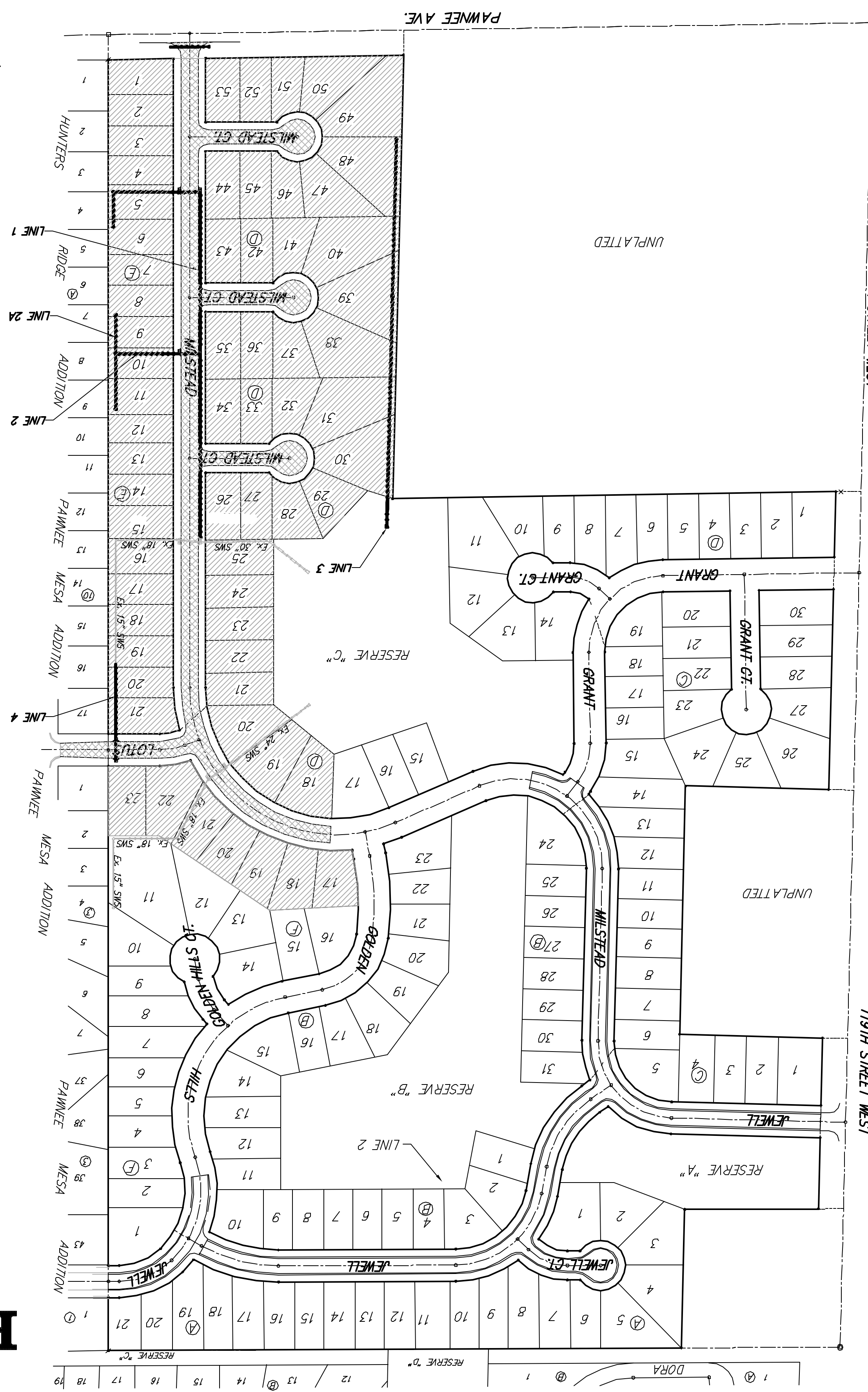
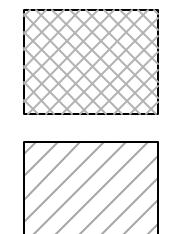
Sheet Index

- 1 The Sheet
- 2 35' Pavement Detail
- 3 35' Pavement Detail
- 4 Sign Detail
- 5 Valley Gutter Details
- 6 Milstead
- 7 Lotus
- 8 Milstead Ct. (Lot 26-34, Bk D)
- 9 Milstead Ct. (Lot 35-43, Bk D)
- 10 Milstead Ct. (Lot 44-53, Bk D)
- 11 Line 2 & 24
- 12 Line 3
- 13 Line 4
- 14 Easement Grading
- 15 Single Type 1-A Inlet Detail
- 16 Double Type 1-A Inlet Detail
- 17 Special Ford Inlet Detail
- 18 Headwall Detail
- 19 Erosion Control Plan
- 20 Erosion Control Details
- 21 Earthwork Cross Sections
- 22 Copy of Plat

Project Earthwork Totals
Excavation = 4272 C.Y.
Loose Fill = 615 C.Y.
Compacted Fill = 63 C.Y.
*NOTE: Project Earthwork Totals are for information only

Benefit Districts

Proposed Streets



GENERAL NOTES

- Contractor will be required to provide notice to utility companies a minimum of twenty-four (24) hours prior to any excavation, as follows:
Kansas One-Call 687-2470
The contractor must notify the following in case of an emergency:
Cox Communications 262-4270
Kansas Gas Service 1-888-482-4950
Westar Energy 383-8650
Avila Energy 1-800-303-0357
Southwestern Bell 268-2245
City of Wichita Water Dept. 268-4563
City of Wichita Storm Sewer Maint. 268-4024
City of Wichita Traffic Maint. 268-4090
Conoco Pipeline Co. 268-4034
Williams Pipeline Co. 1-800-231-2551
Phillips Pipeline Co. 1-800-766-8230
- Utility service lines, poles, valve boxes, meters, and other items shall be marked and located by the contractor. The contractor shall be responsible for adjusting the location of any utility lines which do not conflict with proposed construction. The contractor shall be responsible for adjusting the location of any utility lines which do not conflict with proposed construction. The contractor shall be responsible for adjusting the location of any utility lines which do not conflict with proposed construction.
- Rubble from the removal of miscellaneous structures and other items shall be stockpiled on-site and shall be removed from the site as determined by the engineer. All areas disturbed during construction outside of street right-of-way shall be seeded with ryegrass. Contractors shall prepare ground per City Specifications.
- Environment. Material either stockpiled or disposed of in a flood plain would require a Kansas State Board of Engineers permitting regulations. Any material buried or stockpiled beyond approved construction limits unless require additional archeological investigations unless buried in a previously approved borrow location.
- Trees and shrubs in public right-of-way which are in direct conflict with the Contractor's approval. Specifications shall be included in bid item "Project Seeding". All seeding operations shall conform to City of Wichita Standard Specifications.
- Easements shall be graded as shown on the Easement Grading Plan.
- Contractor shall install Reinforced Concrete Pipe (RCP) in street right-of-way as shown on the plan sheets. At all other locations contractor may install SMS Pipe meeting City of Wichita Standard Specifications and also HDPE pipe.
- The Contractor shall be responsible for preserving property irons. The Contractor will be required to re-establish any property irons which are damaged or destroyed by his construction operations. Such irons shall be re-established by a licensed land surveyor in accordance with state laws.