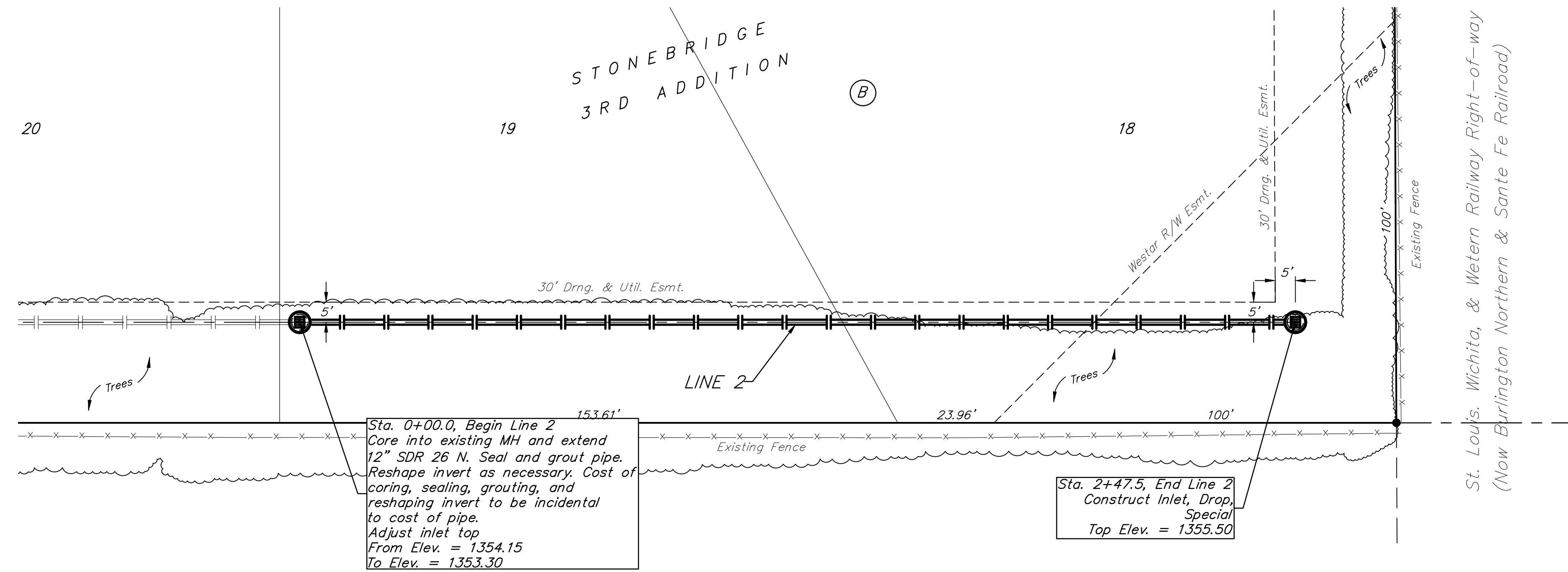
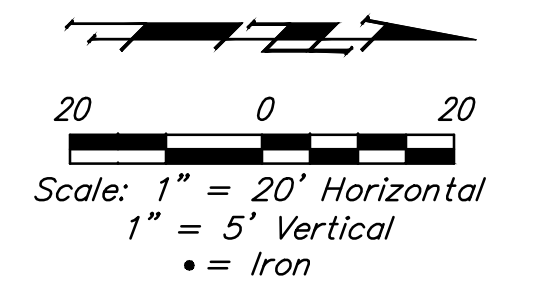


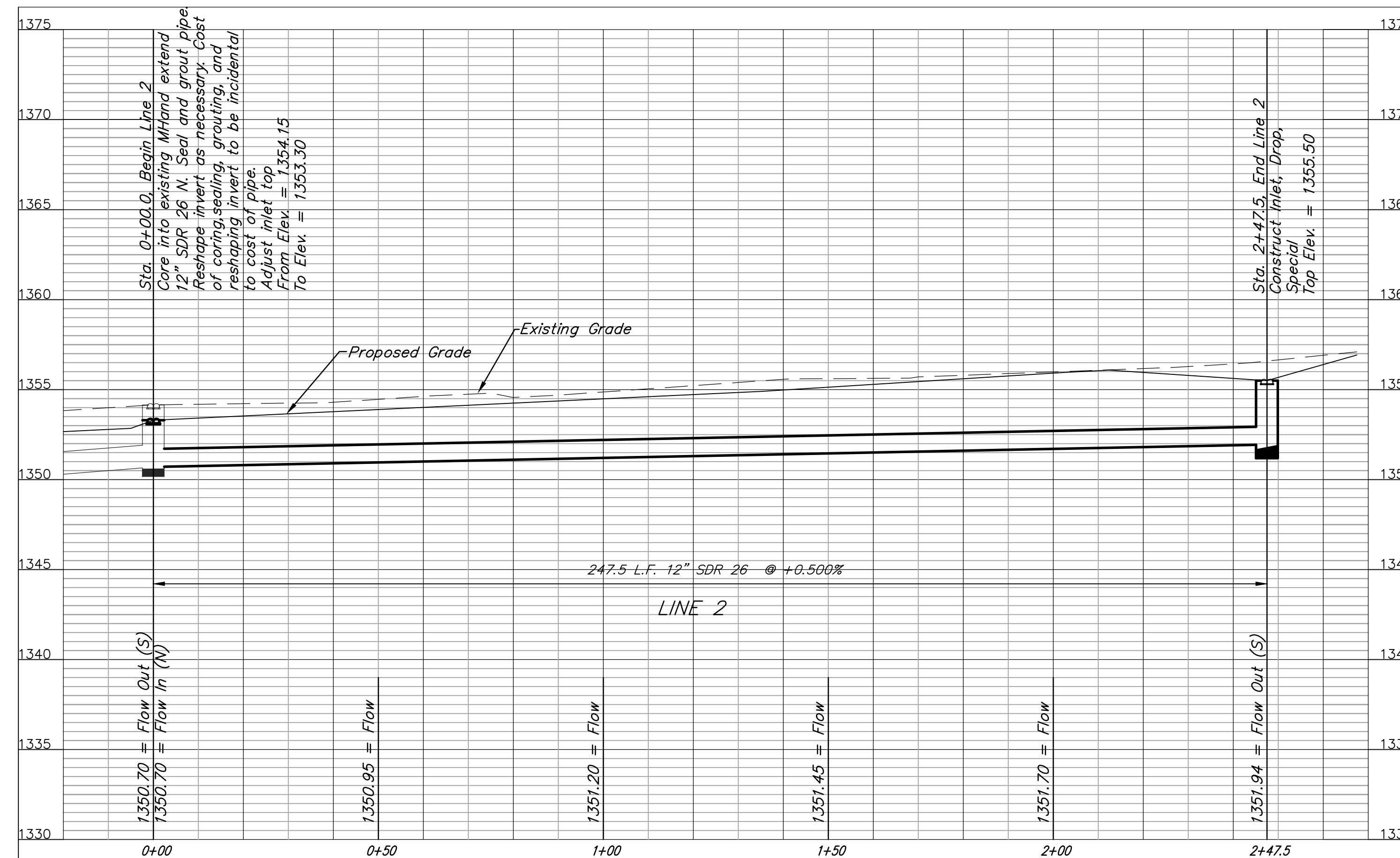
**BENCHMARK:**

BM #1: "□" Cut on top of curb, east side of Ridgehurst, adjacent to common front lot corner of Lots 6 & 7, Block E, Stonebridge 2nd Addition.  
ELEV. = 1348.51 NGVD29

BM #2: "□" Cut on top of curb, south side of Sundance, near end of pavement in front of Lot 6, Block 3, Savannah at Castle Rock Ranch 7th Addition.  
ELEV. = 1347.33 NGVD29



St. Louis, Wichita, & Western Railway Right-of-way  
(Now Burlington Northern & Sante Fe Railroad)



	STONEBRIDGE 2ND/3RD ADD. PH. 3 <b>LINE 2</b> SWS IMPROVEMENTS	
	<small>Baughman Company, P.A. 315 Ellis St., Wichita, KS 67211 P 316-263-7271 F 316-262-0149                  ENGINEERING   SURVEYING   PLANNING   LANDSCAPE ARCHITECTURE</small>	
PROJECT NUMBER 472-84593	DESIGN TJW	DRAWN TMS
REVISIONS:	APPROVED DATE 11/14	SCALE Noted SHEET <b>13 OF 27</b>
<small>StrSws 06-08-E639.dwg</small>		<small>06-08-E639</small>