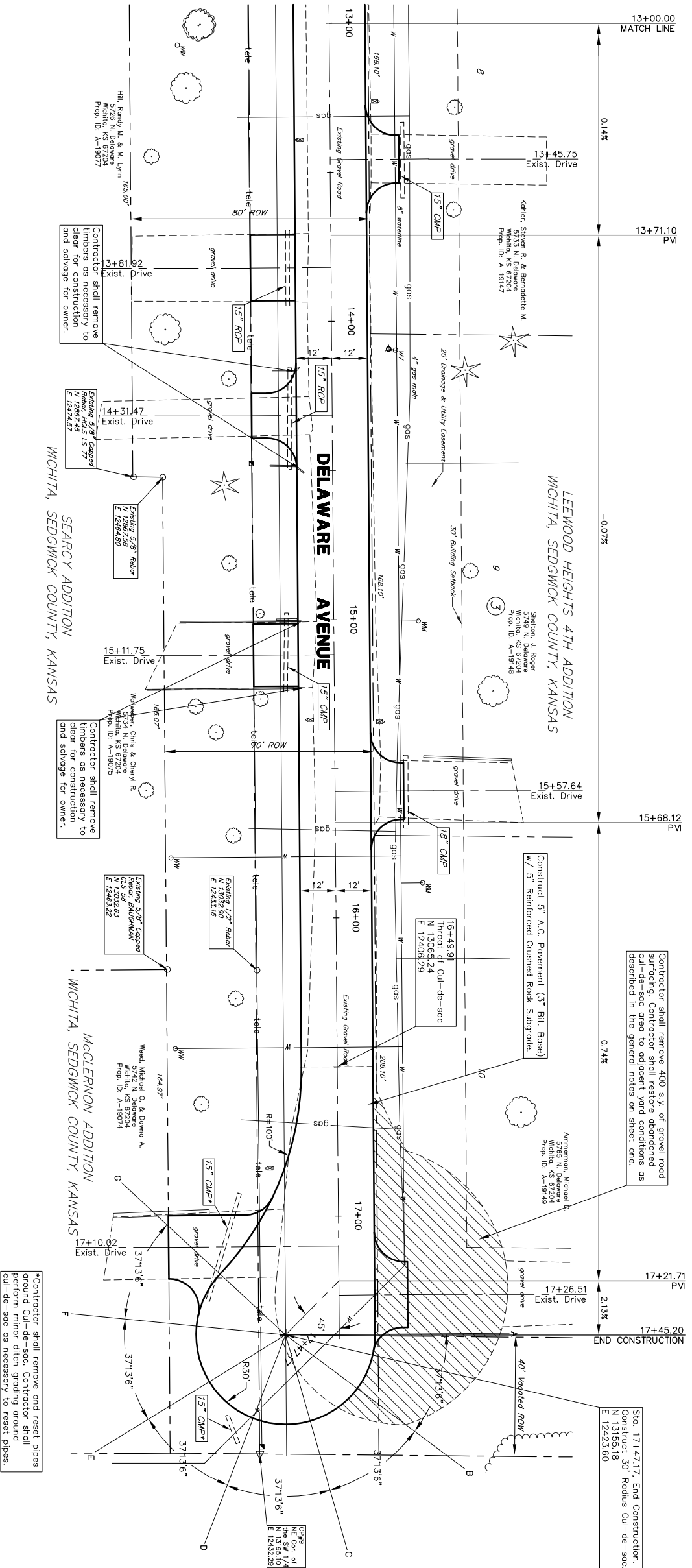


UTILITIES SHOWN REPRESENT THE BEST INFORMATION AVAILABLE FOR DESIGN. ADDITIONAL UTILITIES MAY BE PRESENT ON THIS PROJECT. THE CONTRACTOR SHALL BE RESPONSIBLE FOR DETERMINING THE EXACT LOCATION, DEPTH AND SIZE OF ALL UNDERGROUND UTILITIES PRIOR TO CONSTRUCTION. THE CONTRACTOR SHALL BE RESPONSIBLE FOR ANY DAMAGE CAUSED BY THE FAILURE TO DO SO.

UTILITY LEGEND	
	Flag Pole
	Water Well
	SS Manhole
	SWS Manhole
	Sprinkler Head
	Water Meter
	Sign
	Water Valve
	Fire Hydrant
	Gas Meter
	Gas Valve
	Misc. Post
	Guy Anchor
	Light Pole
	Section Corner
	Mailbox
	Deciduous Tree or Shrub
	Confertious Tree
	Existing Fence
	Property Line
	Underground Telephone
	Underground Electric
	Overhead Electric
	Water Line
	Sanitary Sewer
	Gas Line
	Cable TV or Fiber Optic

STREET PAYING PLAN FOR  
**DELAWARE AVENUE**  
WICHITA, SEDGWICK CO., KANSAS  
CED PROJ. NO.: 20020917

**CERTIFIED ENGINEERING DESIGN, P.A.**  
810 WEST DOUGLAS, SUITE C  
WICHITA, KANSAS 67203  
PH. (316) 262-8808 FAX. (316) 262-1669  
DESIGNED: HDF  
DRAWN: OKW  
SCALE: 1"=20'  
DATE: 12/02  
SHEET 21  
CHECKED: HDF  
CED FILE: 53-d&w&rd-Base TOTAL 74



Station	Elevation	Grade (%)
13+20	146.8	
13+20	147.18	
13+40	146.8	
13+40	147.21	
13+60	146.8	
13+60	147.23	
13+80	146.9	
13+80	147.26	
14+00	146.9	
14+00	147.27	
14+20	146.8	
14+20	147.26	
14+40	146.8	
14+40	147.25	
14+60	146.8	
14+60	147.23	
14+80	146.8	
14+80	147.22	
15+00	146.8	
15+00	147.20	
15+20	146.8	
15+20	147.19	
15+40	146.8	
15+40	147.18	
15+60	146.7	
15+60	147.16	
15+80	146.7	
15+80	147.15	
16+00	146.8	
16+00	147.23	
16+20	146.9	
16+20	147.38	
16+40	147.1	
16+40	147.53	
16+60	147.2	
16+60	147.68	
16+80	147.4	
16+80	147.83	
17+00	147.5	
17+00	147.98	
17+20	147.7	
17+20	148.13	
17+40	147.9	
17+40	148.27	
17+45.20	147.6	
17+45.20	148.83	

**SURVEY DISCLAIMER**  
TOPOGRAPHIC SURVEY USED IN PREPARING PLANS WAS PROVIDED BY GARBER SURVEYING SERVICE, (620) 663-7032, 423 WEST FIRST AVE., HUTCHINSON, KS. ENGINEER DOES NOT GUARANTEE SURVEY ELEVATIONS FOR ACCURACY. CONTRACTOR SHALL VERIFY ELEVATIONS AND NOTIFY ENGINEER OF ANY DISCREPANCIES.

PVI STA = 13+71.10  
PVI ELEV = 147.28

-0.07%

PVI STA = 15+68.12  
PVI ELEV = 147.14

0.74%

PVI STA = 17+21.71  
PVI ELEV = 148.29

2.13%