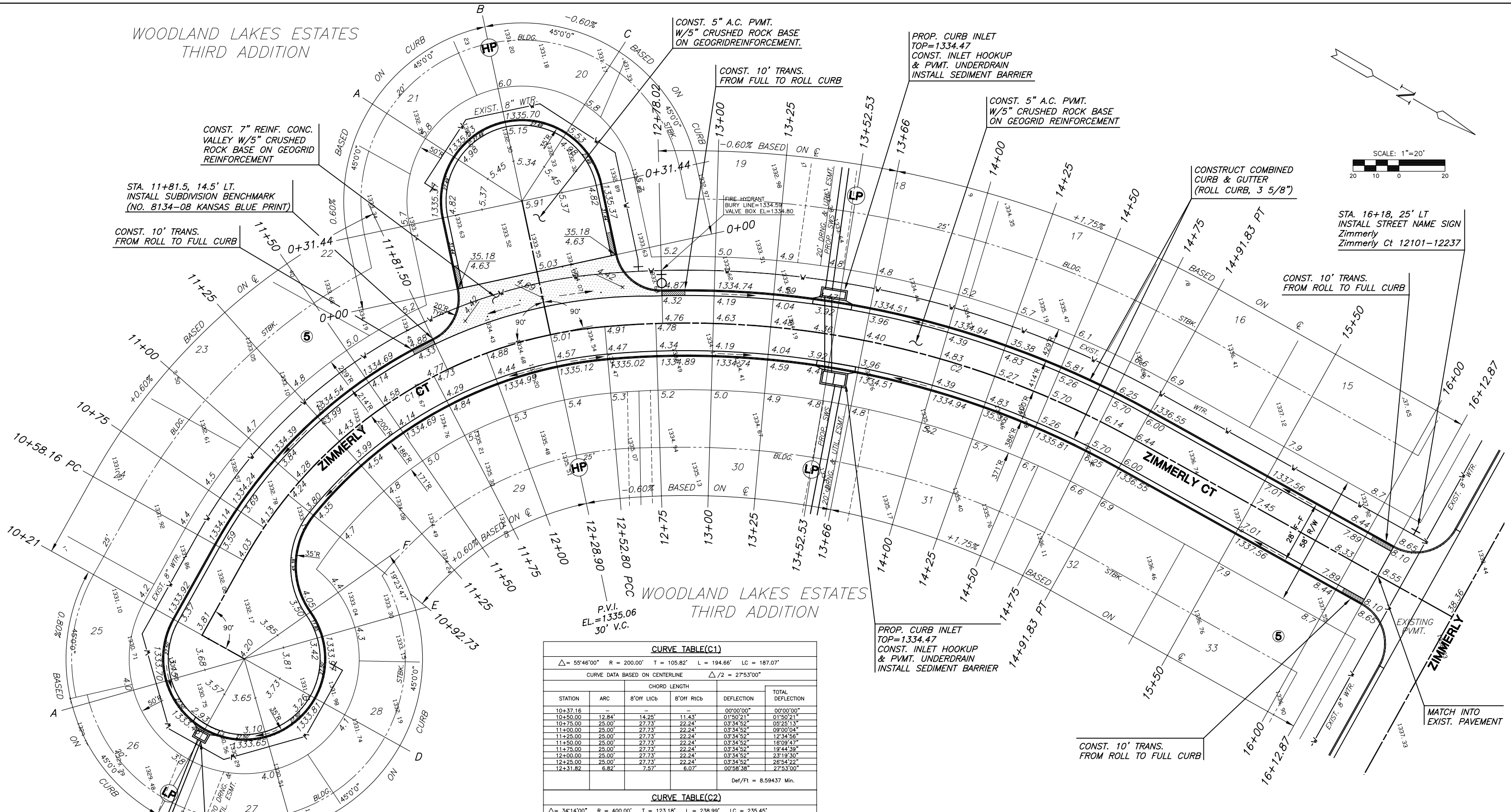


WOODLAND LAKES ESTATES
THIRD ADDITION



STA. 11+81.5, 14.5' LT.
INSTALL SUBDIVISION BENCHMARK
(NO. 8134-08 KANSAS BLUE PRINT)

CONST. 10' TRANS.
FROM ROLL TO FULL CURB

CONST. 7" REINF. CONC.
VALLEY W/5" CRUSHED
ROCK BASE ON GEOGRID
REINFORCEMENT

CONST. 5" A.C. PVMT.
W/5" CRUSHED ROCK BASE
ON GEOGRIDREINFORCEMENT.

CONST. 10' TRANS.
FROM FULL TO ROLL CURB

PROP. CURB INLET
TOP=1334.47
CONST. INLET HOOKUP
& PVMT. UNDERDRAIN
INSTALL SEDIMENT BARRIER

CONST. 5" A.C. PVMT.
W/5" CRUSHED ROCK BASE
ON GEOGRID REINFORCEMENT

CONSTRUCT COMBINED
CURB & GUTTER
(ROLL CURB, 3 5/8")



STA. 16+18, 25' LT
INSTALL STREET NAME SIGN
Zimmerly
Zimmerly Ct 12101-12237

CONST. 10' TRANS.
FROM ROLL TO FULL CURB

P.V.I.
EL=1335.06
30' V.C.

WOODLAND LAKES ESTATES
THIRD ADDITION

PROP. CURB INLET
TOP=1334.47
CONST. INLET HOOKUP
& PVMT. UNDERDRAIN
INSTALL SEDIMENT BARRIER

CONST. 10' TRANS.
FROM ROLL TO FULL CURB

MATCH INTO
EXIST. PAVEMENT

CURVE TABLE(C1)					
$\Delta = 55^{\circ}46'00''$ R = 200.00' T = 105.82' L = 194.66' LC = 187.07'					
CURVE DATA BASED ON CENTERLINE $\Delta/2 = 27^{\circ}53'00''$					
STATION	ARC	8'OFF LICb	8'OFF RICb	DEFLECTION	TOTAL DEFLECTION
10+37.16	-	-	-	00'00'00"	00'00'00"
10+50.00	12.84'	14.25'	11.43'	01'50'21"	01'50'21"
10+75.00	25.00'	27.73'	22.24'	03'34'52"	05'25'13"
11+00.00	25.00'	27.73'	22.24'	03'34'52"	09'00'04"
11+25.00	25.00'	27.73'	22.24'	03'34'52"	12'34'56"
11+50.00	25.00'	27.73'	22.24'	03'34'52"	16'09'47"
11+75.00	25.00'	27.73'	22.24'	03'34'52"	19'44'39"
12+00.00	25.00'	27.73'	22.24'	03'34'52"	23'19'30"
12+25.00	25.00'	27.73'	22.24'	03'34'52"	26'54'22"
12+31.82	6.82'	7.57'	6.07'	00'58'38"	27'53'00"
Def/Ft = 8.59437 Min.					

CURVE TABLE(C2)					
$\Delta = 34^{\circ}14'00''$ R = 400.00' T = 123.18' L = 238.99' LC = 235.45'					
CURVE DATA BASED ON CENTERLINE $\Delta/2 = 17^{\circ}07'00''$					
STATION	ARC	8'OFF LICb	8'OFF RICb	DEFLECTION	TOTAL DEFLECTION
12+31.80	-	-	-	00'00'00"	00'00'00"
12+50.00	18.20'	19.20'	17.20'	01'18'13"	01'18'13"
12+75.00	25.00'	26.37'	23.62'	01'47'26"	03'05'38"
13+00.00	25.00'	26.37'	23.62'	01'47'26"	04'53'04"
13+25.00	25.00'	26.37'	23.62'	01'47'26"	06'40'30"
13+50.00	25.00'	26.37'	23.62'	01'47'26"	08'27'56"
13+75.00	25.00'	26.37'	23.62'	01'47'26"	10'15'21"
14+00.00	25.00'	26.37'	23.62'	01'47'26"	12'02'47"
14+25.00	25.00'	26.37'	23.62'	01'47'26"	13'50'13"
14+50.00	25.00'	26.37'	23.62'	01'47'26"	15'37'39"
14+70.79	20.79'	21.93'	19.65'	01'29'21"	17'07'00"
Def/Ft = 4.29718 Min.					

- NOTES:
- TOP OF CURB ELEVATIONS SHOWN ARE FOR FULL CURB.
 - CONTRACTOR SHALL REMOVE ALL TREES WITHIN ROAD R/W.

LEGEND

STREET SIGN & SIGN LOCATION
(SEE SIGN ASSEMBLY TABLE
FOR TYPE & STATION OF SIGN)

MKEC
ENGINEERING
CONSULTANTS
411 N. WEBB ROAD
WICHITA, KS. 67206
316-684-9600

**WOODLAND LAKES THIRD ADDITION
BRACKEN PHASE**
PROJECT NAME

PAVING PLANS - ZIMMERLY CT
SHEET TITLE

SRS DESIGN BY.	SRS DRAWN BY.	GLA CHECKED BY.
FEBRUARY 2004 DATE	02172E2 JOB NO.	7 / 25 SHEET/OF

SCALE: 1"=20'