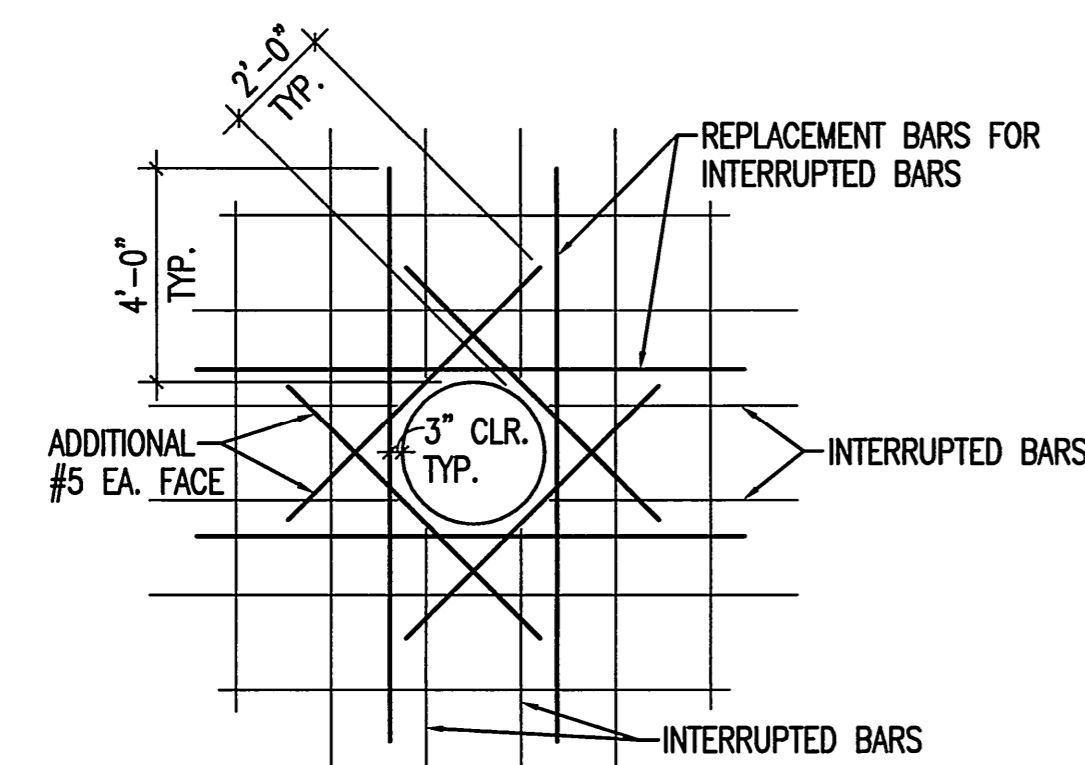


**1 FOUNDATION PLAN**  
S1.1 3/8"=1'-0"

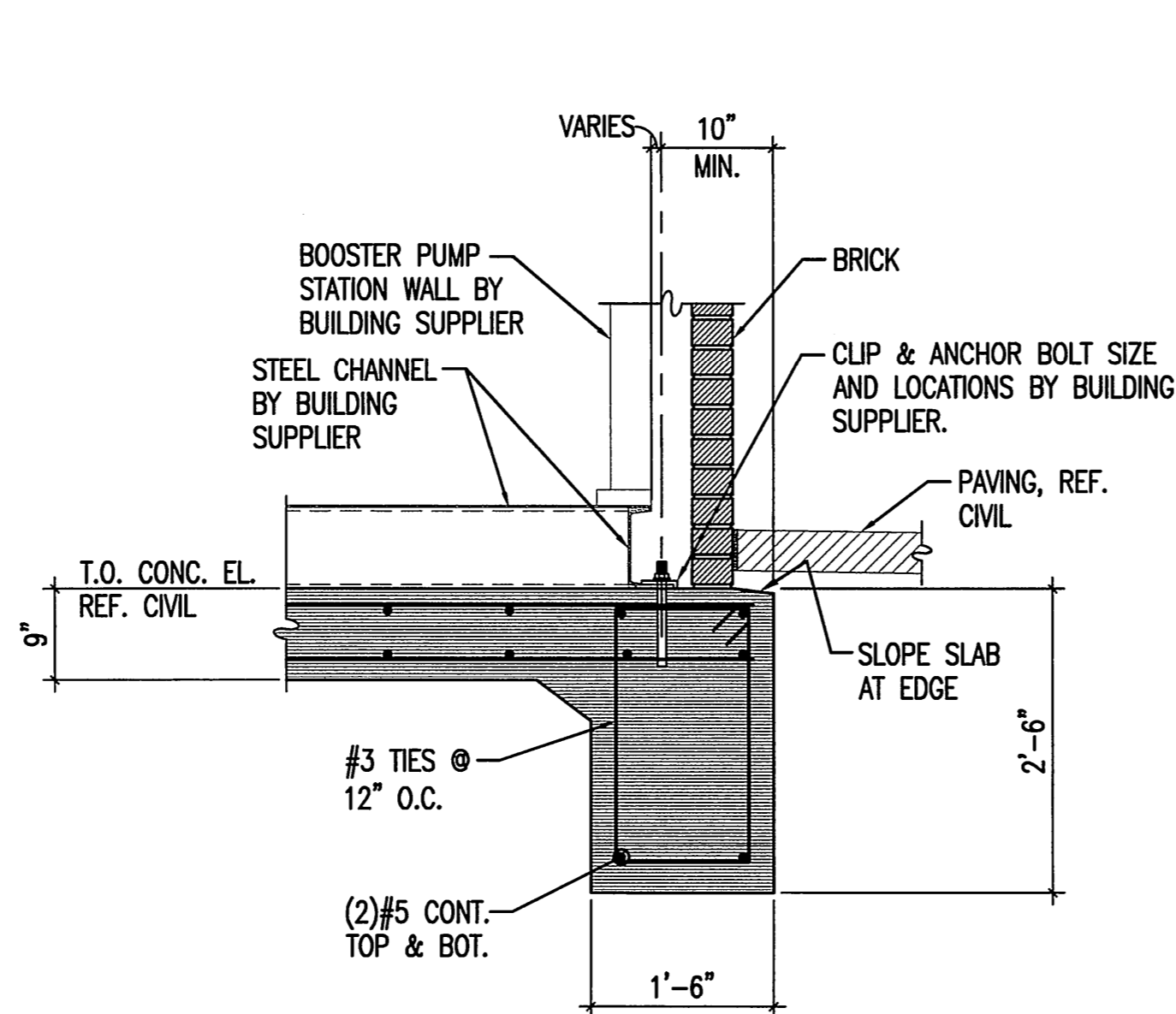
NOTE:  
ALL DIMENSIONS TO BE VERIFIED  
W/PRE-ENGINEERED STRUCTURE MFR.



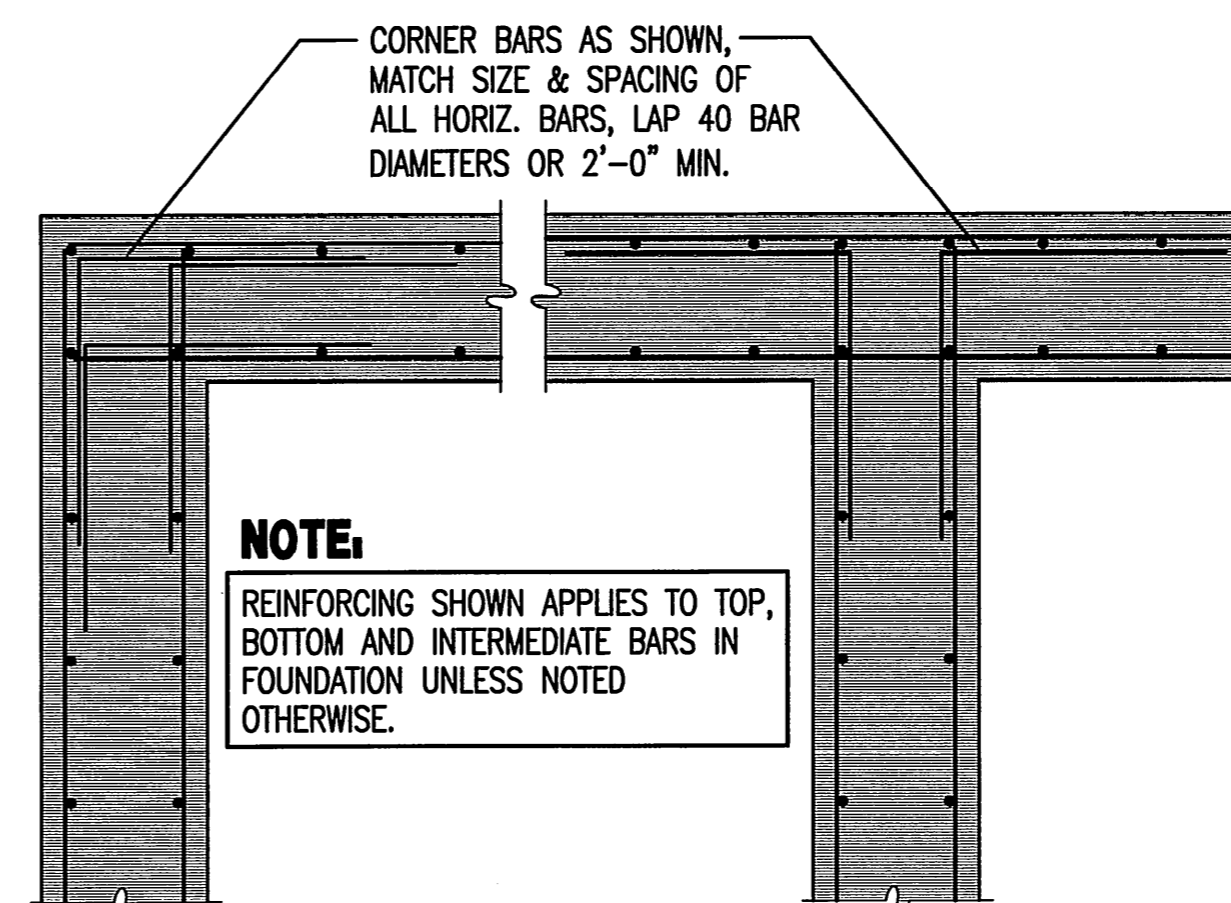
**NOTE:**

- USE THIS DETAIL FOR ALL OPENINGS IN CONCRETE WALLS AND SLABS GREATER THAN 8", PROVIDE (2)#5 ON DIAGONAL AT EACH CORNER AS SHOWN. EXTEND BARS 2'-0" PAST OPENING. REPLACE ALL VERTICAL AND HORIZONTAL BARS INTERRUPTED BY THE OPENING WITH AN EQUAL NUMBER AND SIZE BARS EVENLY DIVIDED ON EACH SIDE OF THE OPENING UNLESS NOTED OTHERWISE.
- REFER TO PLANS FOR ALL OPENING LOCATIONS.

**5 WALL/SLAB OPENING REINFORCING**  
S1.1 NO SCALE

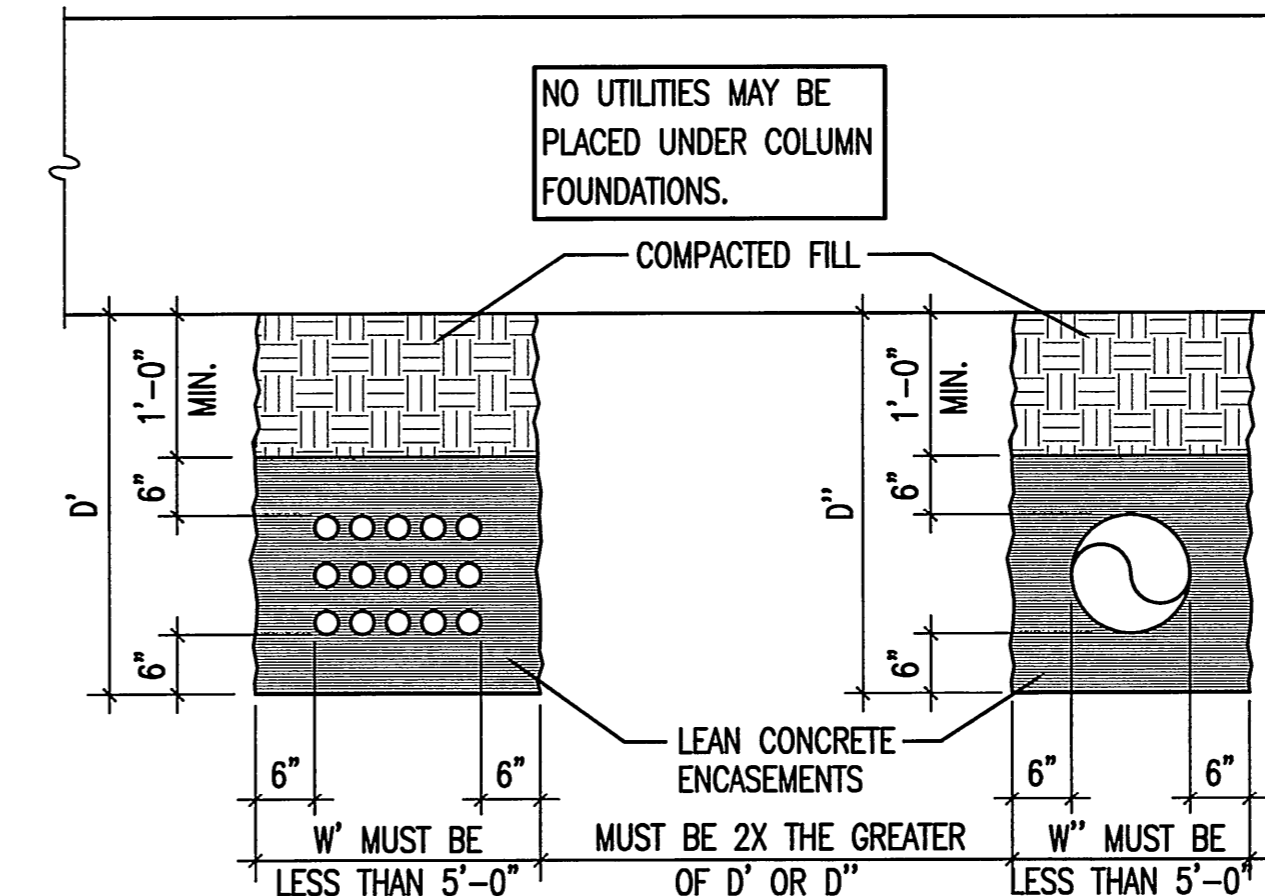


**6 TYP. FOUNDATION SECTION**  
S1.1 3/4"=1'-0"



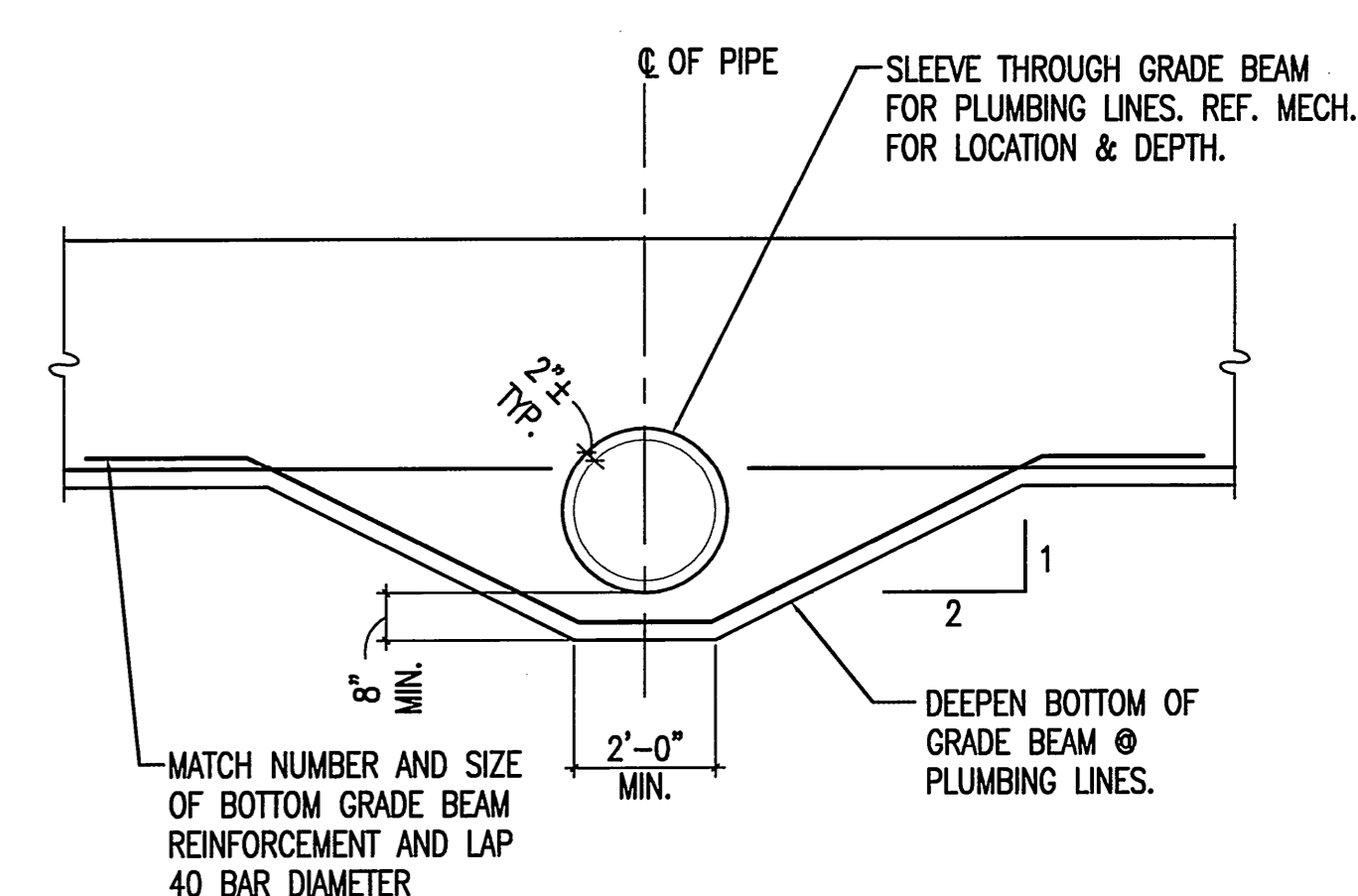
**NOTE:**  
REINFORCING SHOWN APPLIES TO TOP, BOTTOM AND INTERMEDIATE BARS IN FOUNDATION UNLESS NOTED OTHERWISE.

**2 TYP. CORNER BAR DETAIL**  
S1.1 NO SCALE

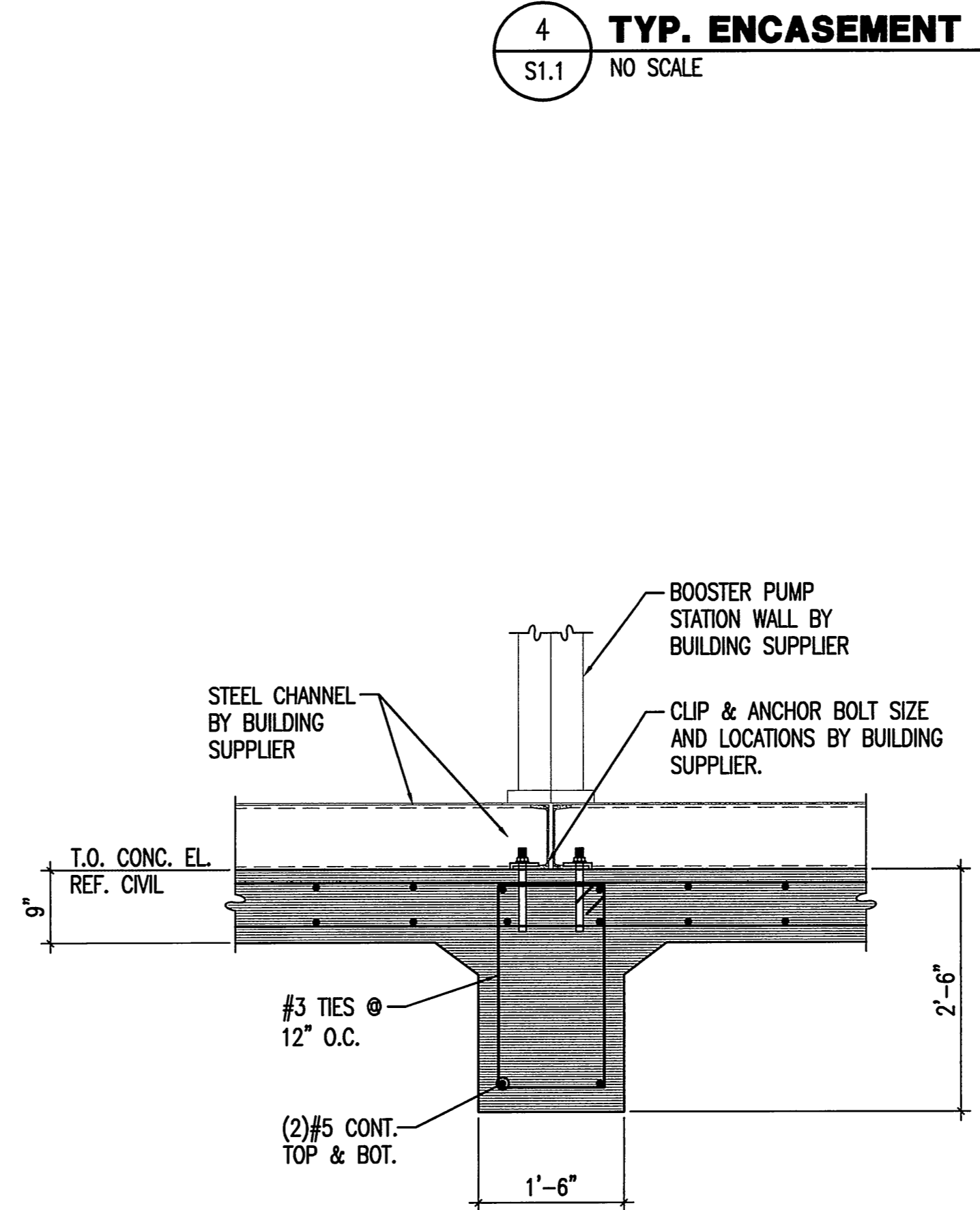


**4 TYP. ENCASEMENT OF UTILITIES UNDER FOUNDATIONS**  
S1.1 NO SCALE

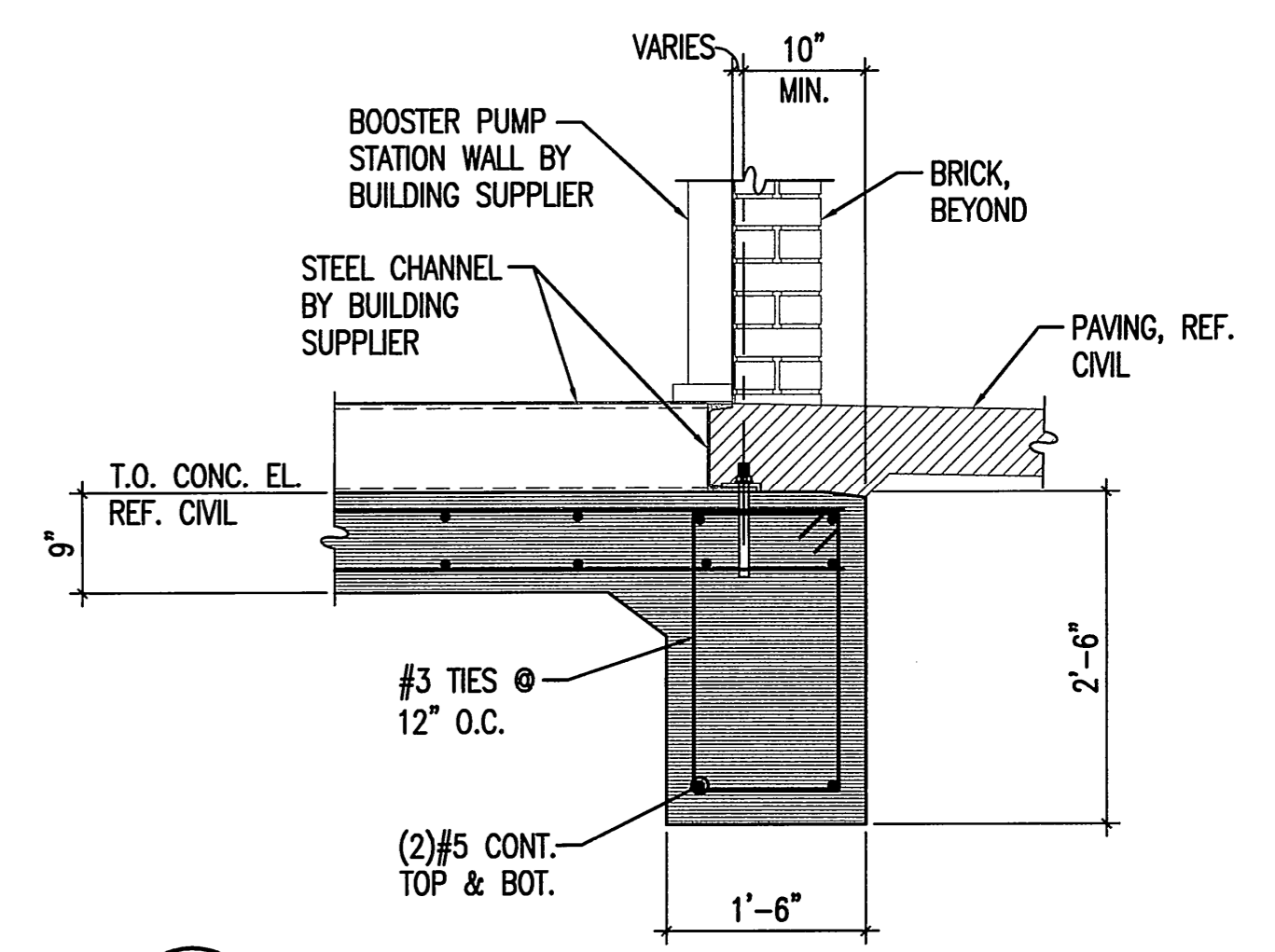
NOTE: IF THESE CONDITIONS CANNOT BE MET THE CONTRACTOR SHALL NOTIFY THE ENGINEER BEFORE PROCEEDING.



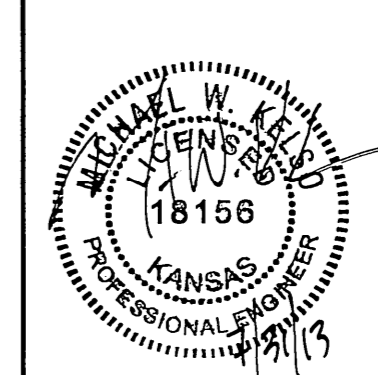
**3 TYP. THICKENED FOUNDATION DETAIL**  
S1.1 NO SCALE



**7 TYP. FOUNDATION SECTION**  
S1.1 3/4"=1'-0"



**8 FOUNDATION SECTION AT DOOR**  
S1.1 3/4"=1'-0"



No.	Revision	By	Date
SEDGWICK COUNTY RURAL WATER DISTRICT #1 WATER DISTRIBUTION SYSTEM IMPROVEMENTS <b>BOOSTER PUMP STATION</b> <b>FOUNDATION PLAN &amp; DETAILS</b> GARY JANZEN, P.E. - CITY ENGINEER CITY OF WICHITA PROJECT NO. 448-90565			
		PROFESSIONAL ENGINEERING CONSULTANTS, P.A. 303 SOUTH TOPEKA WICHITA, KS 67202 316-282-2691 www.pec1.com	
Designed by	MWK	Job No.	34-11123
Drawn by	DGC	Date	JULY 2013

Saved: 07-30-2013 5:05:54 PM by MWK  
 Plot Scale: 1:32,356 07-31-2013 8:20:50 AM by TULER HOLLE  
 S:\2011\1123\1123-S1-1