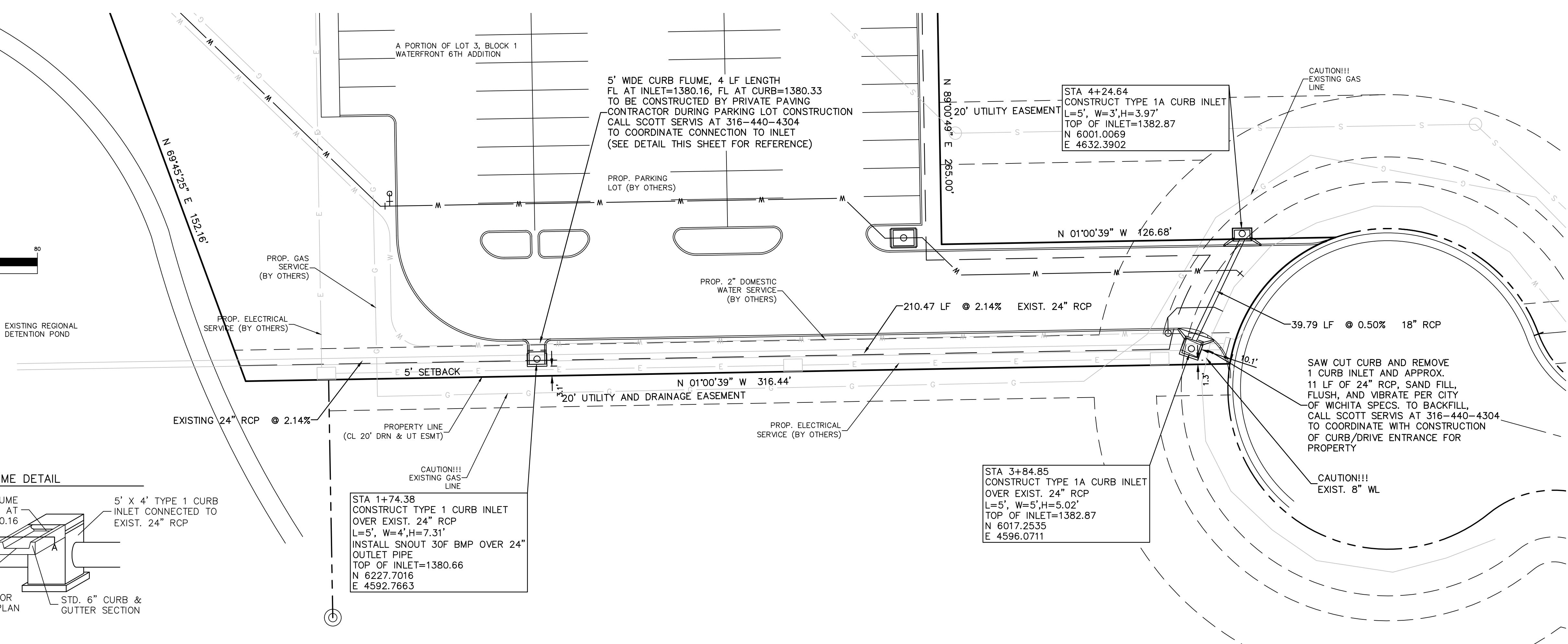
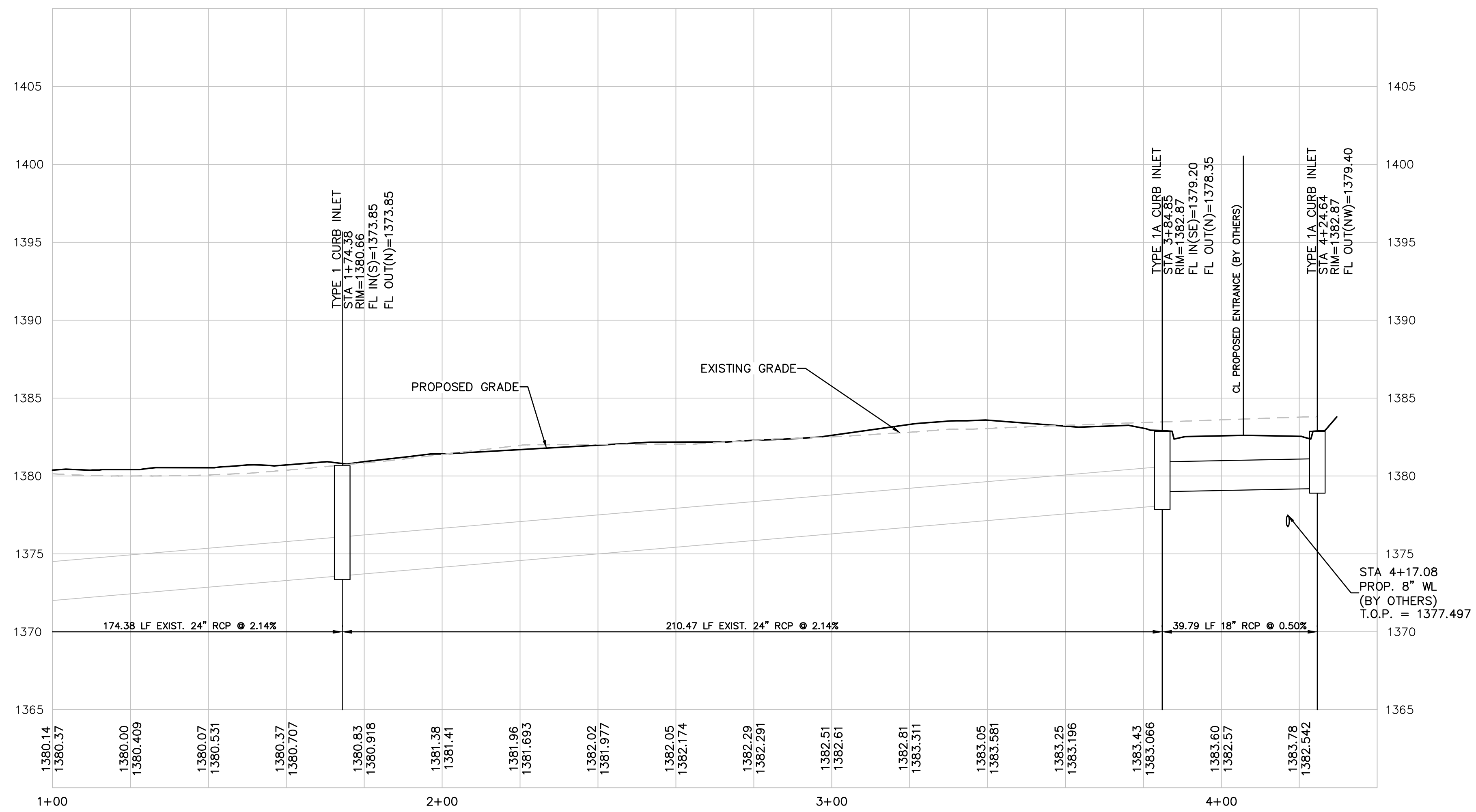


curb flume will be
put in when curb is
put in

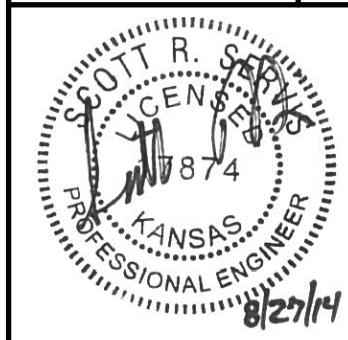
AS BUILTS

KEMILLER
ENGINEERING PA

117 E. Lewis,
Wichita, KS 67202 (316)264-0242



PROJ. NO.	G14D0031
DESIGNER	SRS
DRAWN BY	MLT
CFN	0031DPP
SHEET	2
REV	0
DESCRIPTION	NOAHS EVENT VENUE WATERFRONT 6TH ADDITION WICHITA, KS
DATE	12/23/14
REV	0
DATE	
DESCRIPTION	STORM SEWER PLAN AND PROFILE
DSN	DWN
CHK	CHK

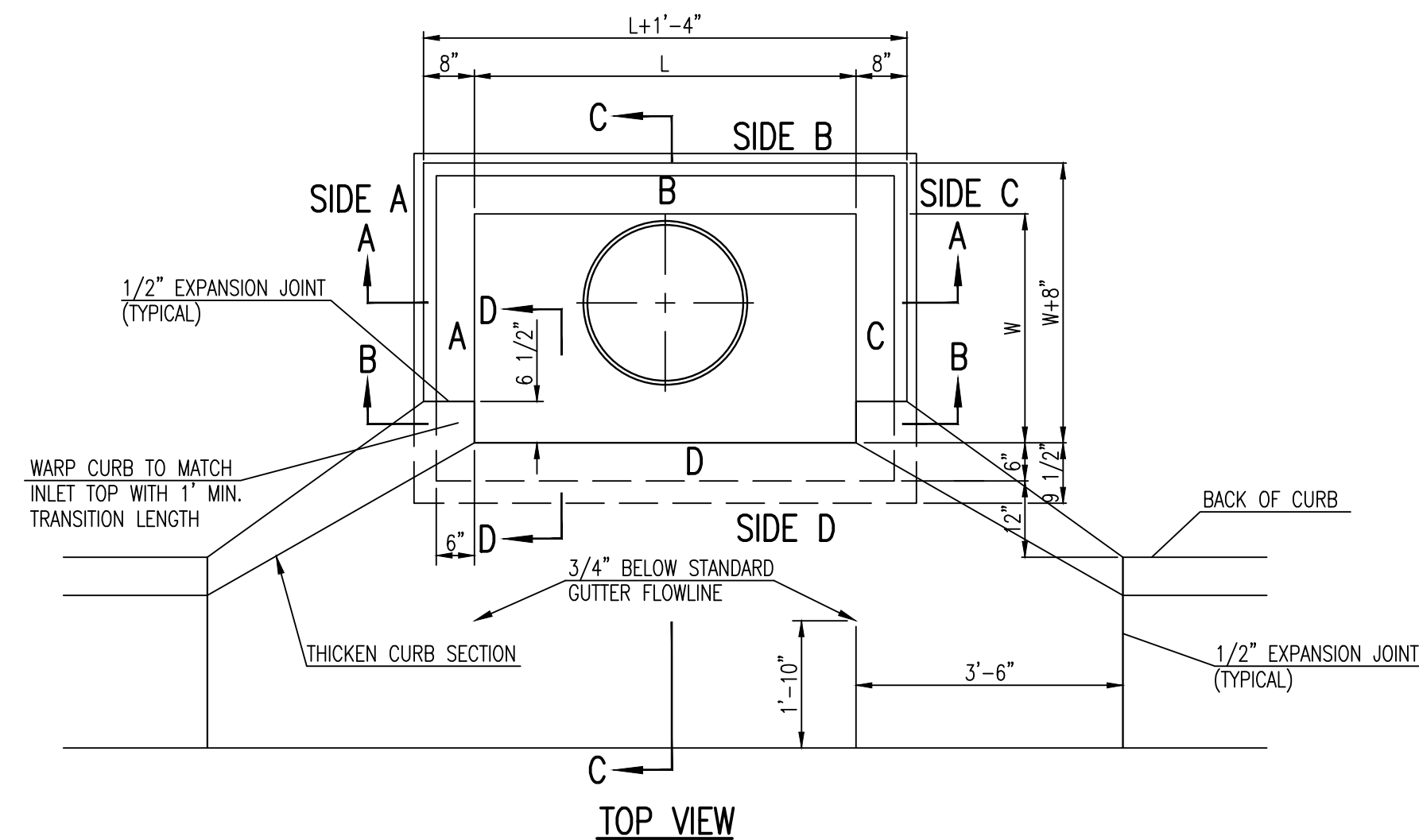


SCOTT R. SERVIS
ENGINEER
KS # 17874

KAW VALLEY ENGINEERING, INC.
CONSULTING ENGINEERS - LAND SURVEYORS

200 N. EMPORIA SUITE 100
WICHITA, KANSAS 67202
PH. (316) 440-4304 | FAX. (316) 440-4309
www.kveeng.com

JUNCTION CITY, KS | KANSAS CITY, MO | LENEXA, KS | SALINA, KS | WICHITA, KS
KAW VALLEY ENGINEERING, INC. IS AUTHORIZED TO OFFER ENGINEERING
SERVICES IN THE STATE OF KANSAS. CERTIFICATE OF AUTHORIZATION # E-113.
EXPIRES 12/23/14



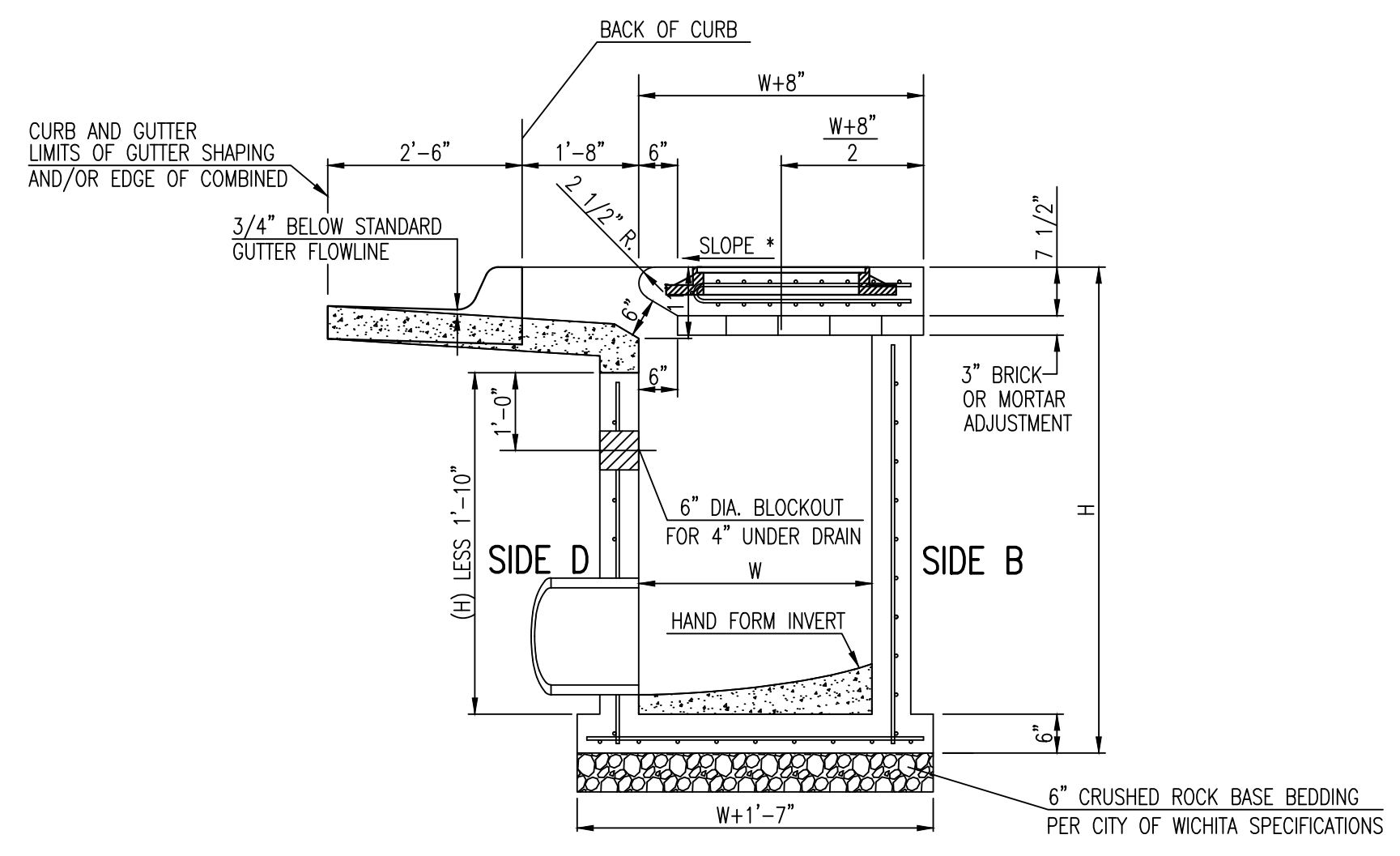
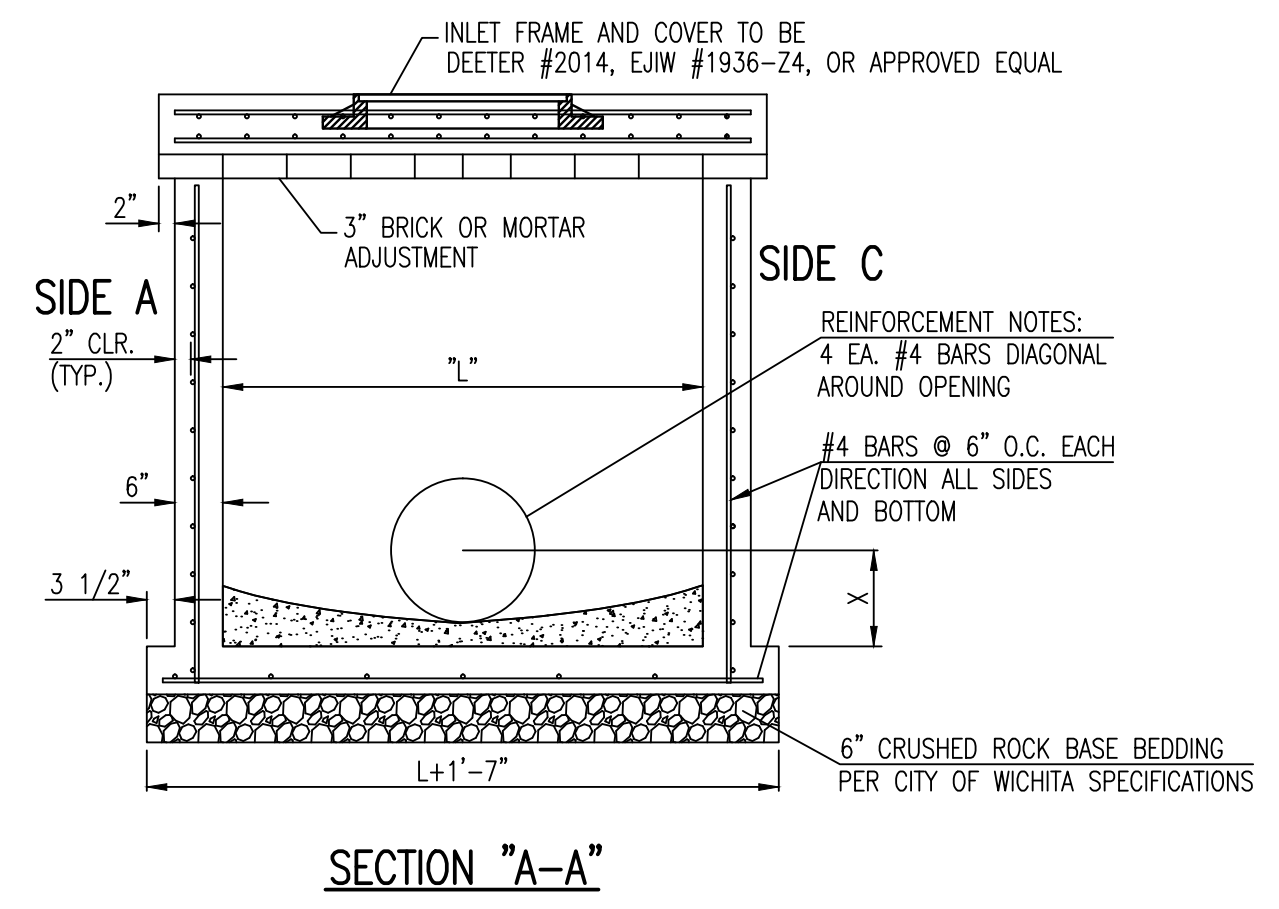
BAR SCHEDULE		
INLET OPENING	B1 BARS	SPACING
5'-0"	#4	4"
10'-0"	#6	3.5"

PRECAST CURB INLET WIDTHS				
W	PRE-CAST TOP SIZE			PIPE DIA.**
	WIDTH	LENGTH	TOP	
3'-0"	W+8"	L+1'-4"	7 1/2"	21" & SMALLER
4'-0"	W+8"	L+1'-4"	7 1/2"	24" & 30"
5'-0"	W+8"	L+1'-4"	7 1/2"	36" & 42"
6'-0"	W+8"	L+1'-4"	7 1/2"	48" & 54"
7'-0"	W+8"	L+1'-4"	7 1/2"	60" & 66"

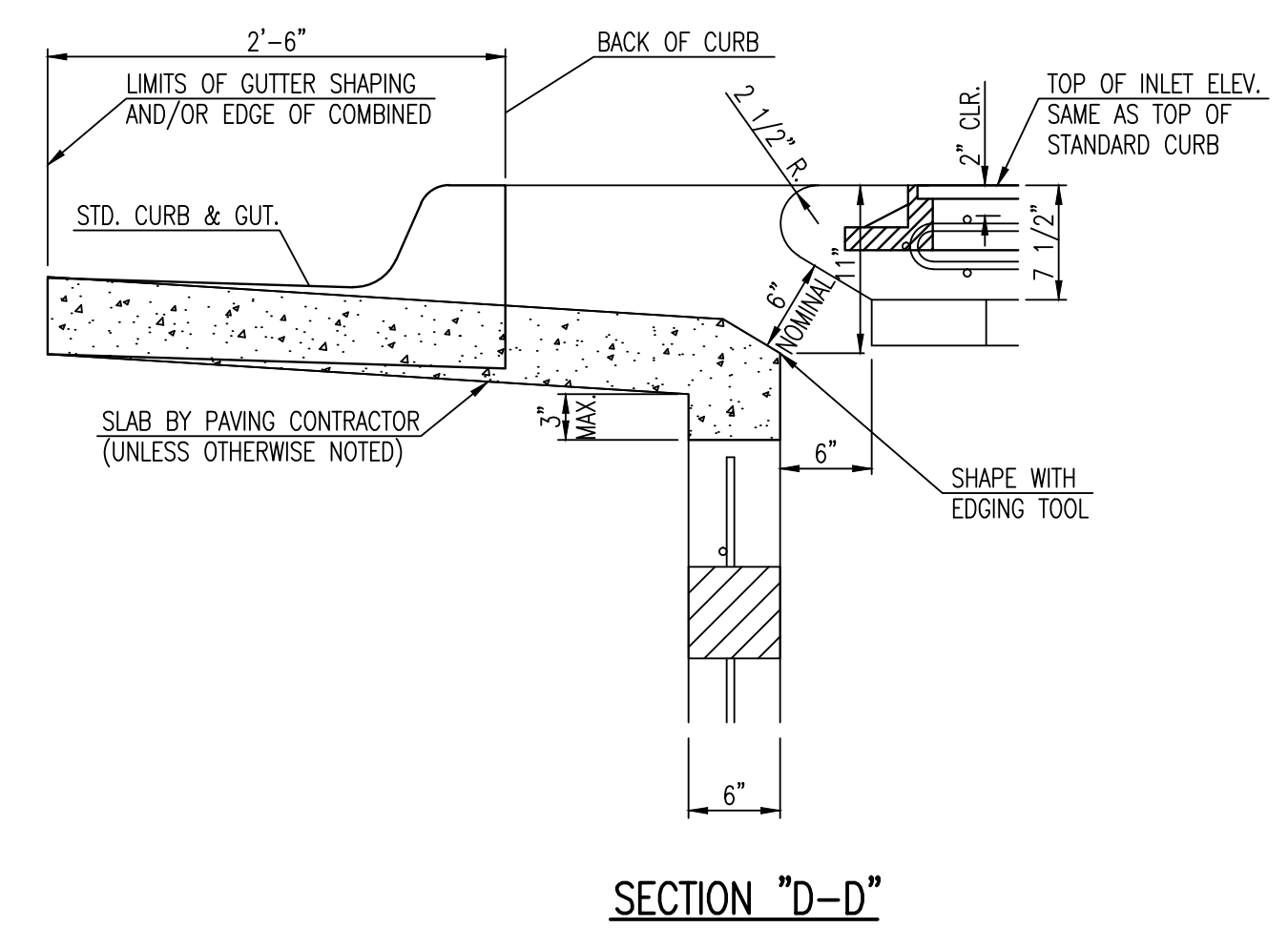
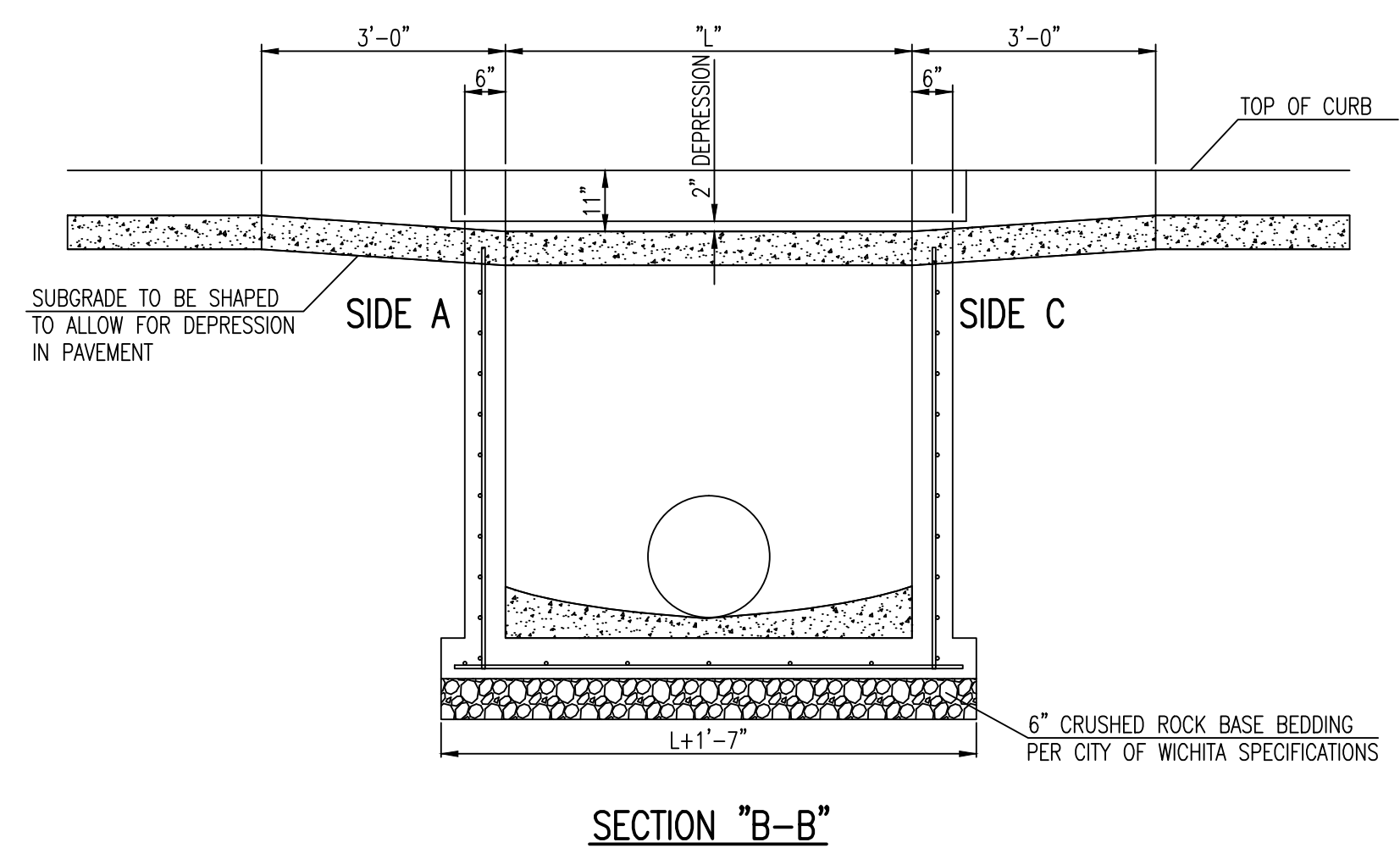
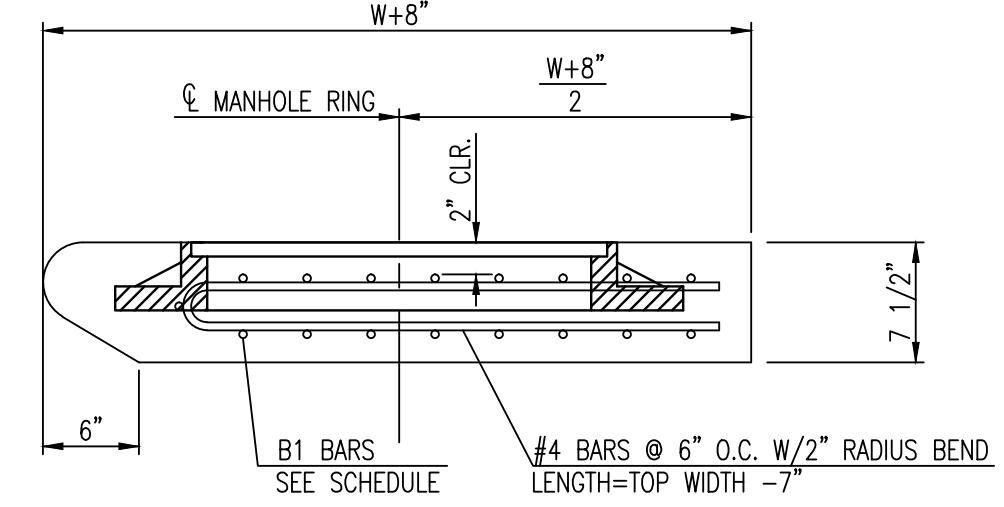
** FOR PIPES PERPENDICULAR TO INLET WALL

GENERAL NOTES

- CONCRETE TOPS TO BE INSTALLED ON THIN MORTAR CUSHION TO INSURE FULL SUPPORT ALONG BRICK. CONCRETE TOPS MAY BE CAST IN PLACE OR PRECAST. CONCRETE USED FOR INLET CONSTRUCTION SHALL CONFORM TO CITY OF WICHITA SPECIFICATIONS FOR CONCRETE PAVEMENT MIX.
- CONTRACTOR SHALL HAVE THE OPTION OF CONSTRUCTING 8" BRICK MASONRY WALLS BETWEEN THE CONCRETE INLET BASE AND TOP OF THIS INLET WHEN W=5'-0" AND H=7'-0" OR LESS.
- INLET INVERT SHALL BE SHAPED WITH 8 SACK SAND MIX CONCRETE TO CREATE FLOW CHANNELS AND TO INCREASE HYDRAULIC EFFICIENCY SUCH THAT THE INLET WILL BE SELF CLEANING BETWEEN ALL INLET AND/OR OUTLET PIPES.
- THE ENDS OF ALL PIPES INSTALLED IN INLETS SHALL BE CUT OFF FLUSH WITH THE INSIDE FACE OF THE INLET WALL.
- INLET FRAME AND COVER TO BE DEETER #2014, EJIW #1936-Z4, OR APPROVED EQUAL.
- CONTRACTOR SHALL REMOVE LIFTING HOOKS AFTER INSTALLATION. RECESSES IN INLET WALL SHALL BE GROUTED FLUSH TO THE INLET WALL WITH HYDRAULIC CEMENT AFTER THE INLET IS IN PLACE. LIFTING HOLES THRU THE INLET WALL WILL NOT BE ACCEPTED.



NOTES:
* SLOPE OF INLET TOP TO MATCH SIDEWALK OR PARKING SLOPES WITHIN LIMITS INDICATED.



STANDARD TYPE 1A
CURB INLET
5'-0" OR 10'-0" OPENING

CITY ENGINEER
GARY JANZEN, P.E.

PROJECT NUMBER: OCA NUMBER: DATE: 11/2010

CITY ENGINEER'S OFFICE
CITY HALL - SEVENTH FLOOR
455 NORTH MAIN STREET
WICHITA, KANSAS 67202-1620
(316) 268-4501

NOAHS EVENT VENUE
WATERFRONT 6TH ADDITION
WICHITA, KS

PROJ. NO.	G14D0031
DESIGNER	SRS
DRAWN BY	MLT
CFN	0031DET
SHEET	4

STANDARD DETAILS

DESCRIPTION: STANDARD DETAILS

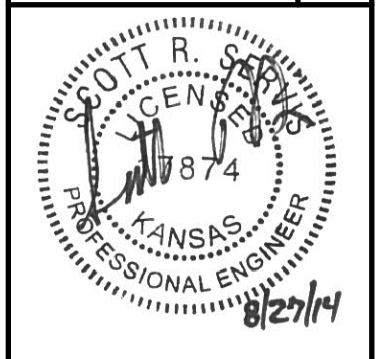
REV: 0

DATE:

CHK: DSN

DWN: DSN

CHK: DSN



SCOTT R. SERVIS
ENGINEER
KS # 17874

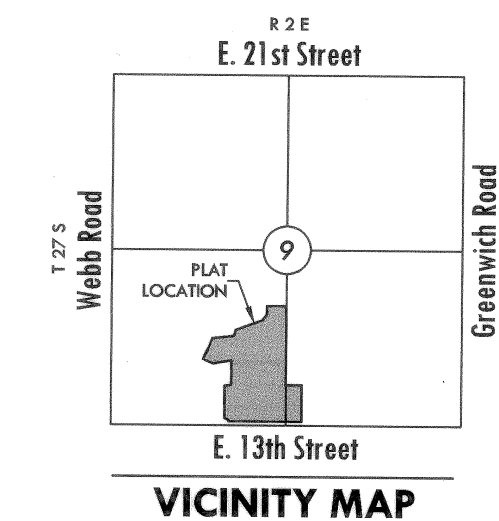
KAW VALLEY ENGINEERING, INC.
CONSULTING ENGINEERS - LAND SURVEYORS
200 N. EMPORIA SUITE 100
WICHITA, KANSAS 67202
PH. (316) 440-4304 | FAX. (316) 440-4309
www.kaveeng.com

JUNCTION CITY, KS | KANSAS CITY, MO | LENEXA, KS | SALINA, KS | EMPORIA, KS | WICHITA, KS
KAW VALLEY ENGINEERING, INC. IS AUTHORIZED TO OFFER ENGINEERING SERVICES IN THE STATE OF KANSAS. CERTIFICATE OF AUTHORIZATION # E-113.
EXPIRES 12/31/14

FINAL PLAT

THE WATERFRONT SIXTH ADDITION

AN ADDITION TO WICHITA, SEDGWICK COUNTY, KANSAS



BENCH MARK

Square cut on SW corner of signal light pole base at NE corner of Webb Rd. and 13th St.
Elev.=1373.345 (NGVD 29)

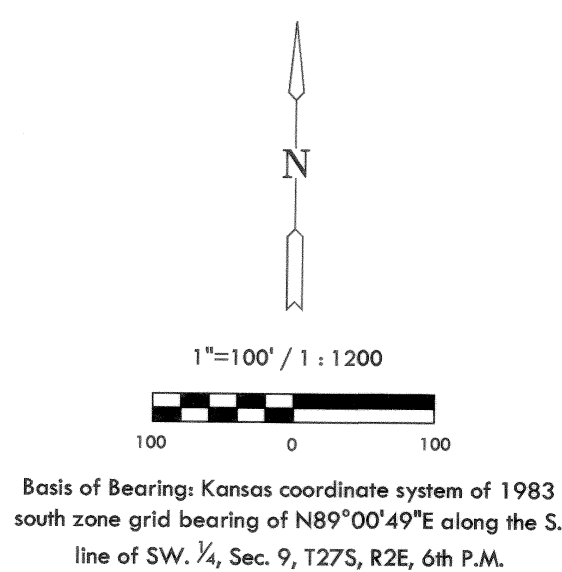
MINIMUM PAD ELEVATION LOWEST BUILDING OPENING			
LOT	BLOCK	ELEVATION NGVD 29	
2	1	1380.5	
N. 550.53' of 3	1	1380.5	
S. 265.0' of 3	1	1386.1	
N. 270.0' of 4	1	1386.1	

STREET CENTERLINE TABLE		
LINE	LENGTH	BEARING
L1	526.69'	N00°59'11"W
L2	67.65'	N15°25'33"E
L3	141.50'	S89°00'49"W
L4	45.00'	S75°42'05"W

STREET CENTERLINE CURVE TABLE			
CURVE	LENGTH	RADIUS	DELTA
C1	156.40'	600.00'	14°56'06"
C2	218.84'	400.00'	31°20'50"
C3	193.87'	300.00'	37°01'32"
C4	82.78'	200.00'	23°42'48"
C5	64.31'	215.00'	17°08'21"

NOTES

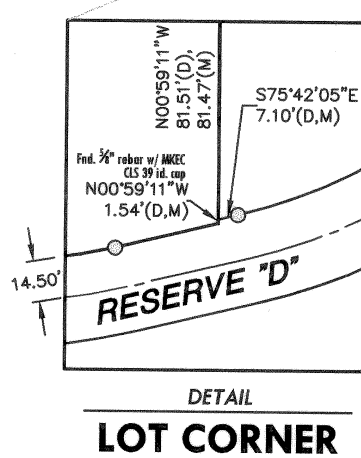
- Access Controls:
13th Street - Access points for Block 1 shall be placed accordingly: The minimum distance between full turning movement drives shall be 400'. The minimum distance between a right-in/right-out drive and either another right-in/right-out drive or a full movement drive shall be 200'.
- Street Drainage Easements:
Along Lindberg Street and Lindberg Circle where there is 32' of right-of-way a 15' street drainage easement is provided abutting and adjoining the 32' right-of-way as indicated.



Basis of Bearings: Kansas coordinate system of 1983 south zone grid bearing of N89°00'49"E along the S. line of SW 1/4, Sec. 9, T27S, R2E, 6th P.M.

LEGEND

- Date of Survey: July, 2006
- △ = Section corner Monument Found
 - = Found 5/8" Rebar w/ MKEC CLS 39 id. cap
 - = Set 5/8" Rebar w/ MKEC CLS 39 id. cap
 - (M) = Measured
 - (CM) = Calculated from measured
 - (P) = Platted
 - (D) = Described or Record Dimension

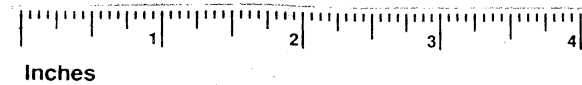


DETAIL LOT CORNER

N. WEBB RD.

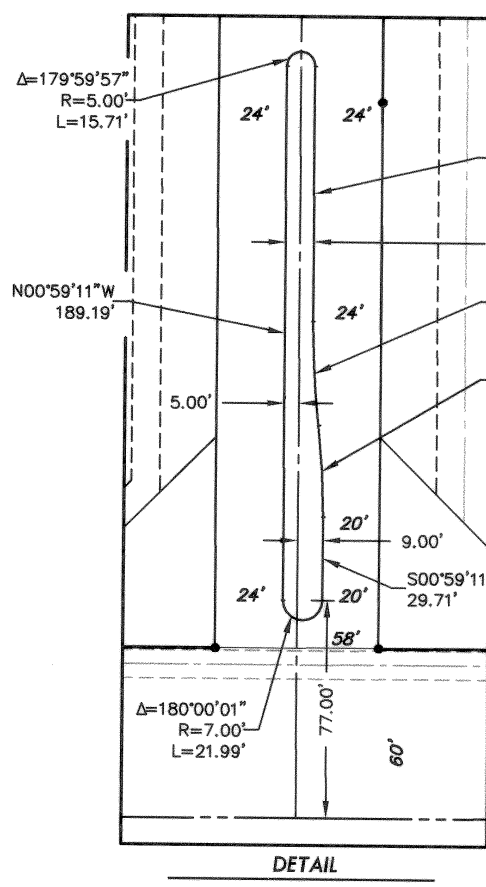
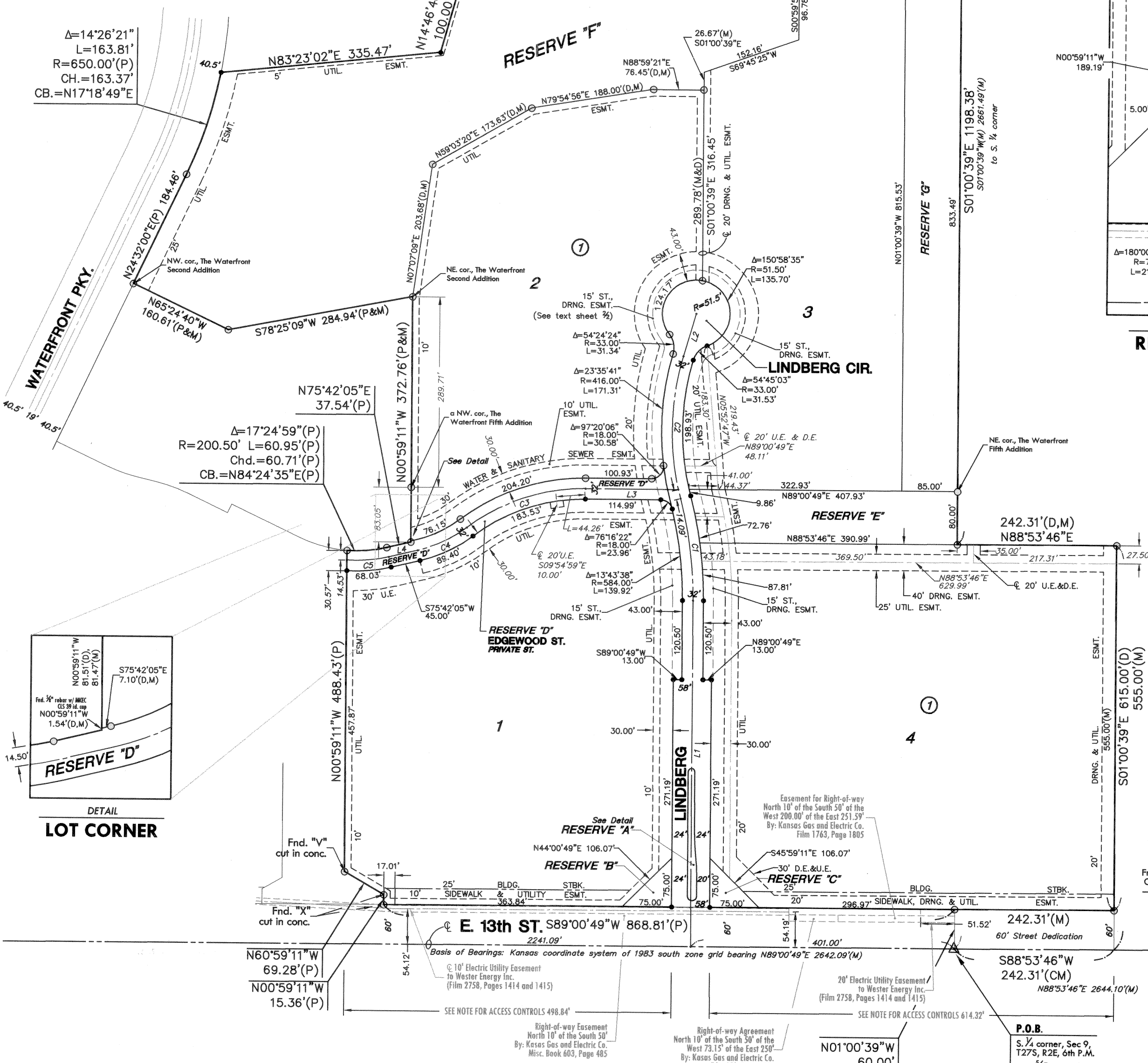
Datum BM

SW cor. SW 1/4, Sec. 9, T27S, R2E, 6th P.M.
Fnd. dibbled "x"

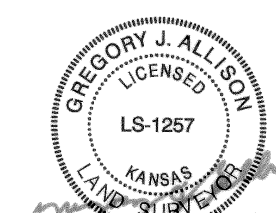


This digital plat record accurately reproduces in all details the original plat filed with the Sedgwick County Register of Deeds. Digitized under the supervision of Register of Deeds Bill Meek by Sedgwick County Geographic Information Systems.

Bill Meek, Register of Deeds
Digitized rendition of original signature



DETAIL RESERVE "A"



SCOTT R. SERVIS
ENGINEER
KS # 17874

KAW VALLEY ENGINEERING, INC.
CONSULTING ENGINEERS - LAND SURVEYORS
200 N. EMPORIA SUITE 100
WICHITA, KANSAS 67202
PH. (316) 440-4304 | FAX. (316) 440-4309
www.kaveeng.com

GREGORY J. ALLISON
LICENSED
LAND SURVEYOR
KS-1257

JUNCTION CITY, KS | KANSAS CITY, MO | LENEXA, KS | SALINA, KS | WICHITA, KS
KAW VALLEY ENGINEERING, INC. IS AUTHORIZED TO OFFER ENGINEERING SERVICES IN THE STATE OF KANSAS. CERTIFICATE OF AUTHORIZATION # E-113. EXPIRES 12/31/14.

NOAHS EVENT VENUE
WATERFRONT 6TH ADDITION
WICHITA, KS

PROJ. NO.	G14D0031
DESIGNER	SRS
DRAWN BY	MLT
CFN	0031PLAT
SHEET	0

PLAT

REV DATE DESCRIPTION

DSN DWN CHK