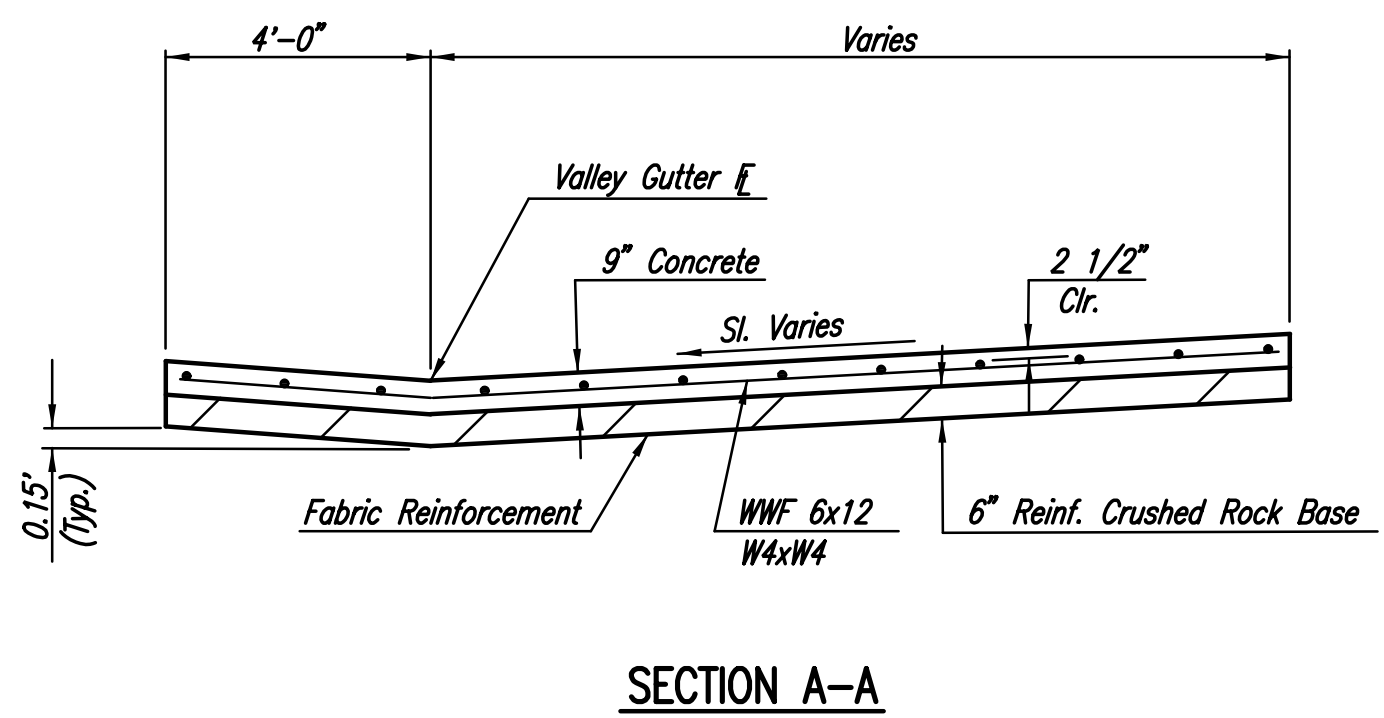
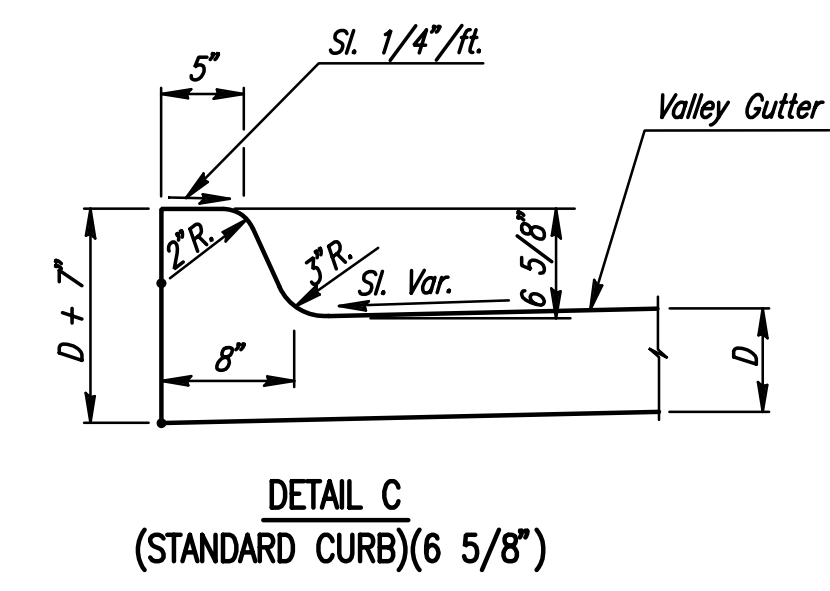
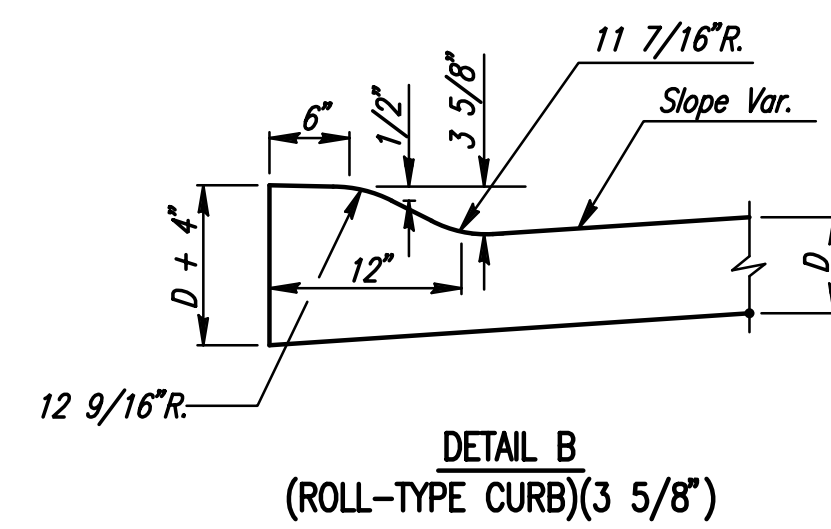
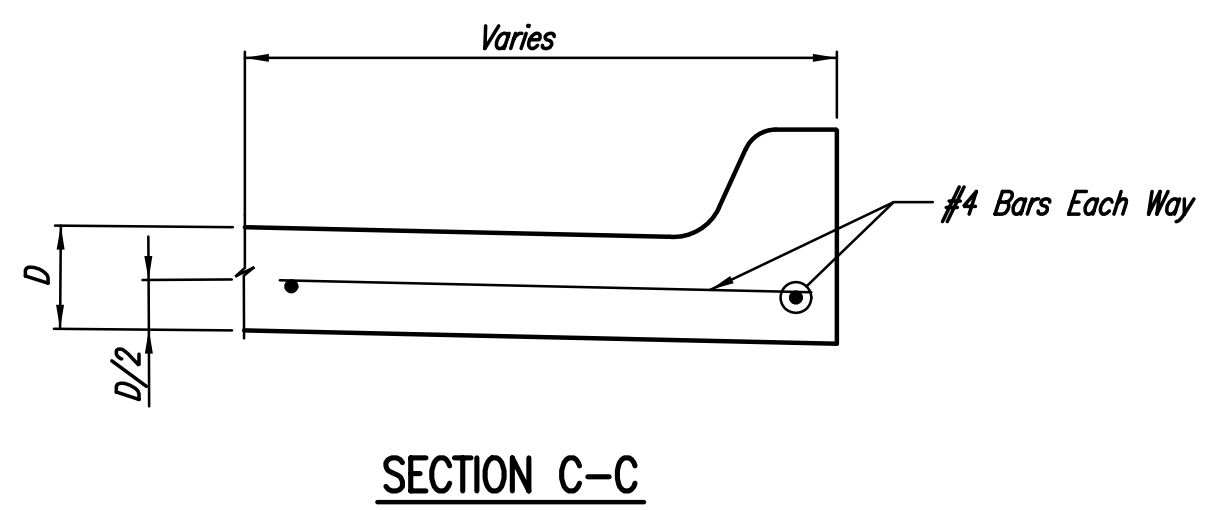
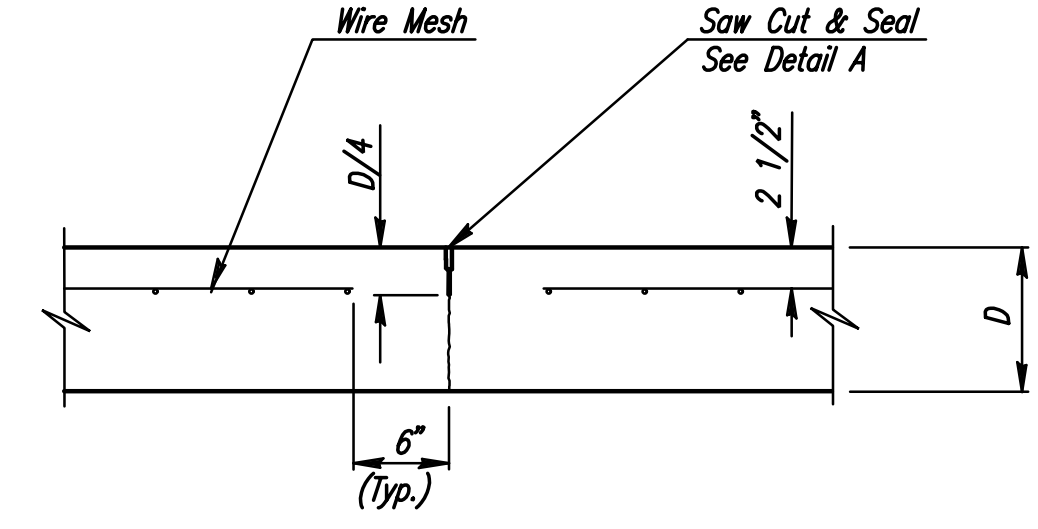


- ⓐ To be accomplished in 2 cuts for Longitudinal Joints and Contraction Joints. Initial cut to be 1/8" wide.
- ⓑ Eliminate bottom of cut when metal keyway is used as part of Longitudinal or Transverse Construction Joint and at Doweled Construction Joint Locations.
- ⓒ 1 1/2" Minimum




NOTE: OMIT REINFORCING MESH AT ALL JOINTS

NOTE: ALL CONCRETE VALLEY GUTTER REINFORCEMENT SHALL BE ADEQUATELY SUPPORTED BY BAR CHAIRS IN THE REQUIRED POSITION UNLESS APPROVED OTHERWISE BY THE ENGINEER.



MONOLITHIC EDGE CURB

Plotted By: drp Date: 1/15/2015 10:07:36 PM
 FILE: I:\2008\08807\001\Standards\08807-001\Valgutter\vb.dgn

No.	Revision	By	Date
HOOPER ROAD			
VALLEY GUTTER DETAILS			
GARY JANZEN, P.E.—CITY ENGINEER CITY OF WICHITA PROJECT NO. 472-84780			
 PEC PROFESSIONAL ENGINEERING CONSULTANTS, P.A. 303 SOUTH TOPEKA WICHITA, KS 67202 316-262-2691 www.pec1.com			
Designed by	JPS	Job No.	08807-001
Drawn by	SVB	Date	Jan., 2015
			Sht. 51 of 227