

STATE	PROJECT NO.	YEAR	SHEET NO.	TOTAL SHEETS
KANSAS	472-84780	2015	55	227

**GENERAL NOTE**

Details shown on this sheet of QuadGuard II and QuadGuard CZ are for information only and may not be an exact detail of QuadGuard II or QuadGuard CZ. See the manufacturer's Installation Manual furnished to the Engineer for details of components, installation and maintenance.

The QuadGuard System shall consist of the following items which shall be considered Subsidiary.

QuadGuard II or CZ Model Number QG210024 (with 9' offset transition panel).

Conc. Backup Wall or Tension Strut Assembly  
Conc. Slab for Assembly

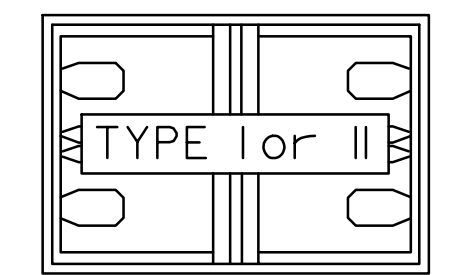
Any Equipment necessary to meet the Manufacturer's requirements for a complete and functioning system.

See the KDOT Standard Specifications for additional information.

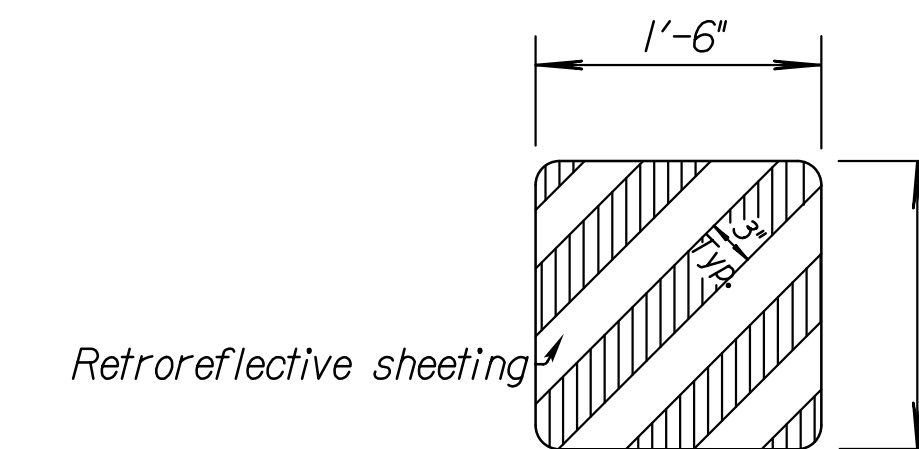
A Type I Object Marker shall be attached at the approach end of the system. The Object Marker shall be bolted or riveted to the end bay.

All work and materials required for installation of this attenuator shall be paid under the bid item "Impact Attenuator (TL2 or TL3)" or "Impact Attenuator (Temporary)".

The QuadGuard II Impact Attenuator is shorter than the QuadGuard. The modifications are the Steel Nose and monorail Guide Stabilizers, the remaining components are identical to QuadGuard system.



PLAN  
REPLACEMENT MODULE  
(TYPE I or TYPE II)

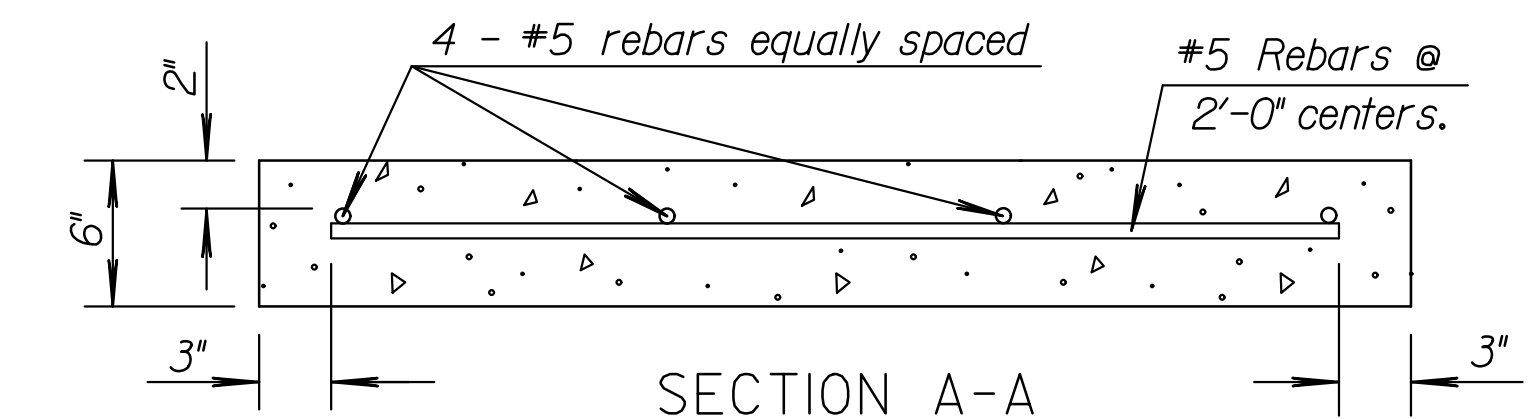


TYPE I OBJECT MARKER

Aluminum Sign Blanks shall be ASTM B-209 (H), Alloy 6061-T6, 5154-H38, or 5052-H38. All holes shall be 3/8" in diameter.

The type of adhesive used for reflective sheeting shall be heat activated or pressure sensitive.

Sign face shall be covered with high performance retroreflective sheeting.



Note: Cross slope of pad shall not exceed 8% and not vary more than 2% from front to back. Pad and Backup Block should be tied together poured monolithically. Concrete for pad and backup block shall have a minimum compressive strength of 4,000 psi.

NO.	DATE	REVISIONS	BY	APP'D
2	7-16-09	Revised to QuadGuard II Impact Att.	S.W.K.	J.O.B.
1	5-20-09	Redrawn, (TL2/TL3) CZ Temporary	S.W.K.	J.O.B.

KANSAS DEPARTMENT OF TRANSPORTATION

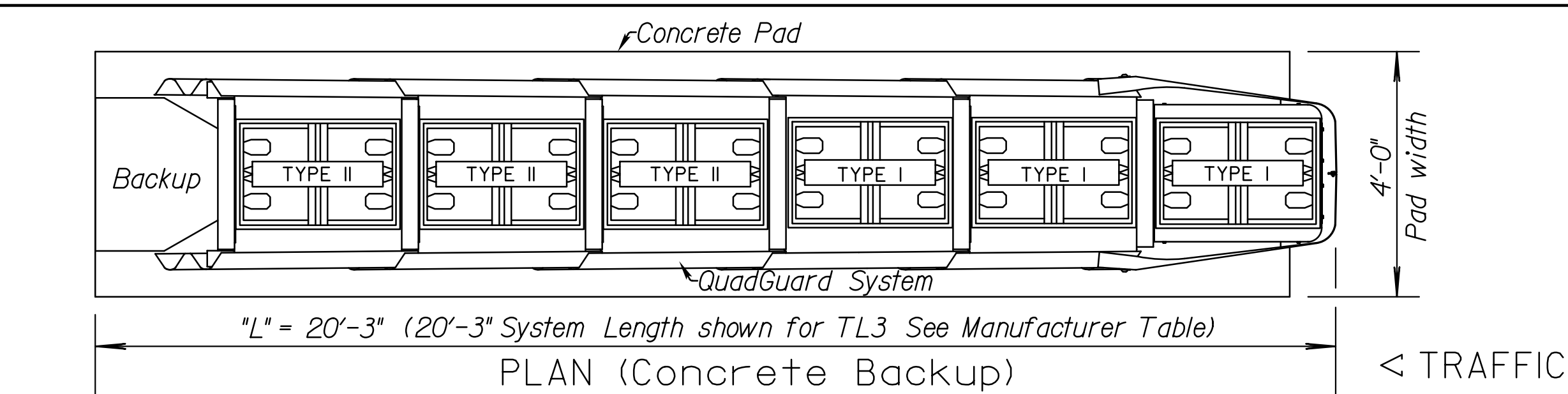
**IMPACT ATTENUATOR  
(QUADGUARD II TL2/TL3)  
(QUADGUARD CZ TL2/TL3 Temp.)**

RD626

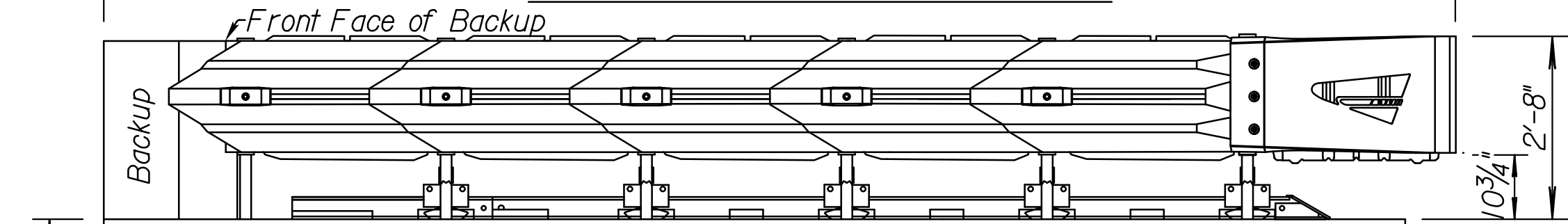
DESIGNED	QUANTITIES	APP'D. James O. Brewer
DESIGN CK.	DETAIL CK.	TRACED Bowser
		TRACE CK. King

Note to the Designer: The designer shall be responsible for designating dimensions "A" and "L" and the QuadGuard model number.

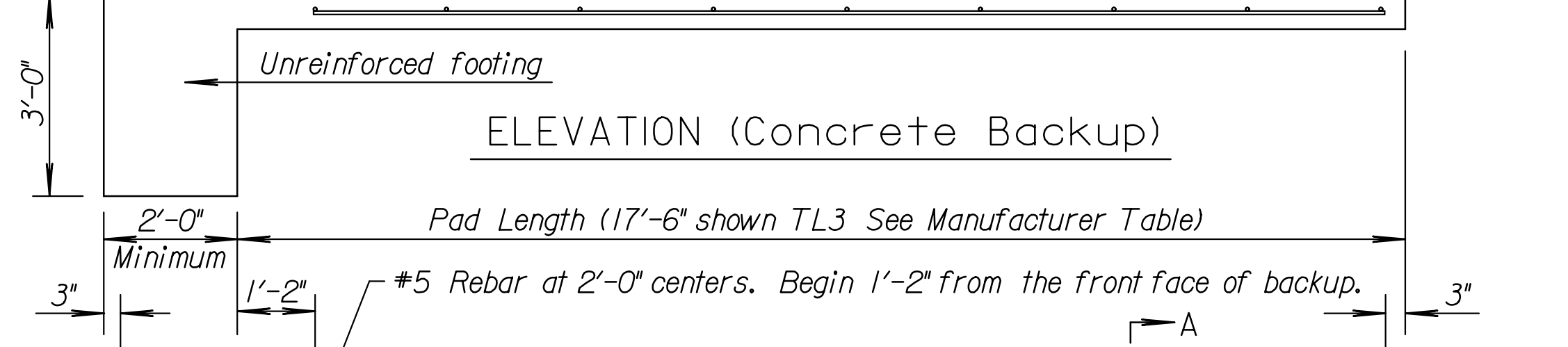
Drawn By: drp  
Plotted: 15-JAN-2015 13:34  
File: I:\2008\08807\001\Standards\08807-001 rd626.dgn



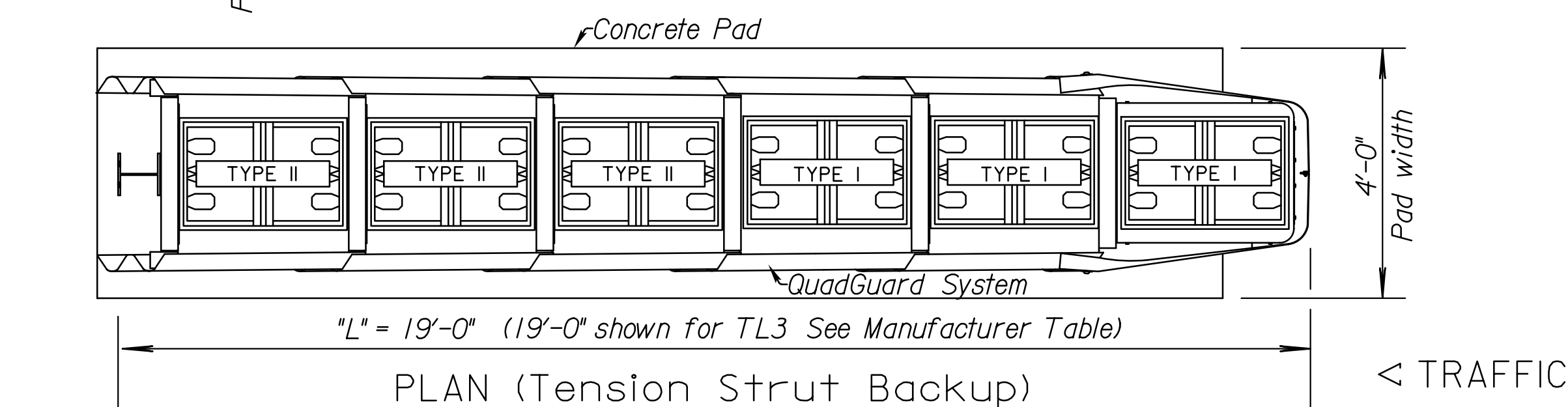
PLAN (Concrete Backup)



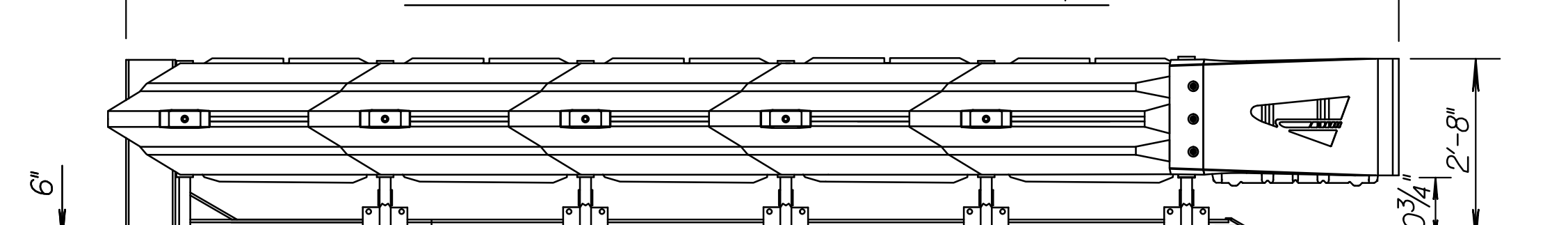
ELEVATION (Concrete Backup)



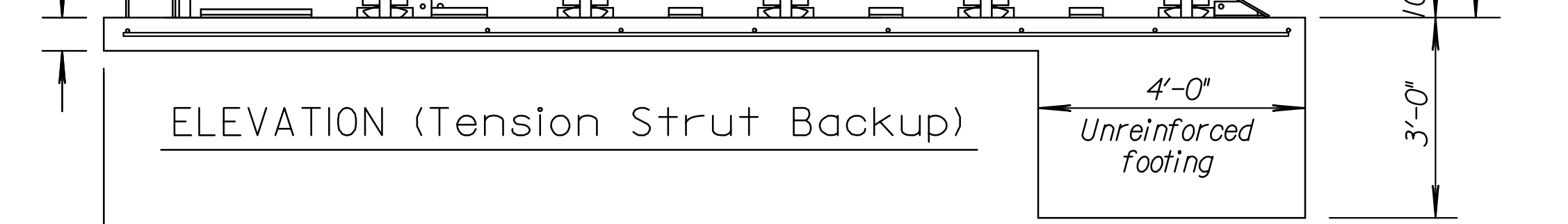
PLAN VIEW CONCRETE PAD



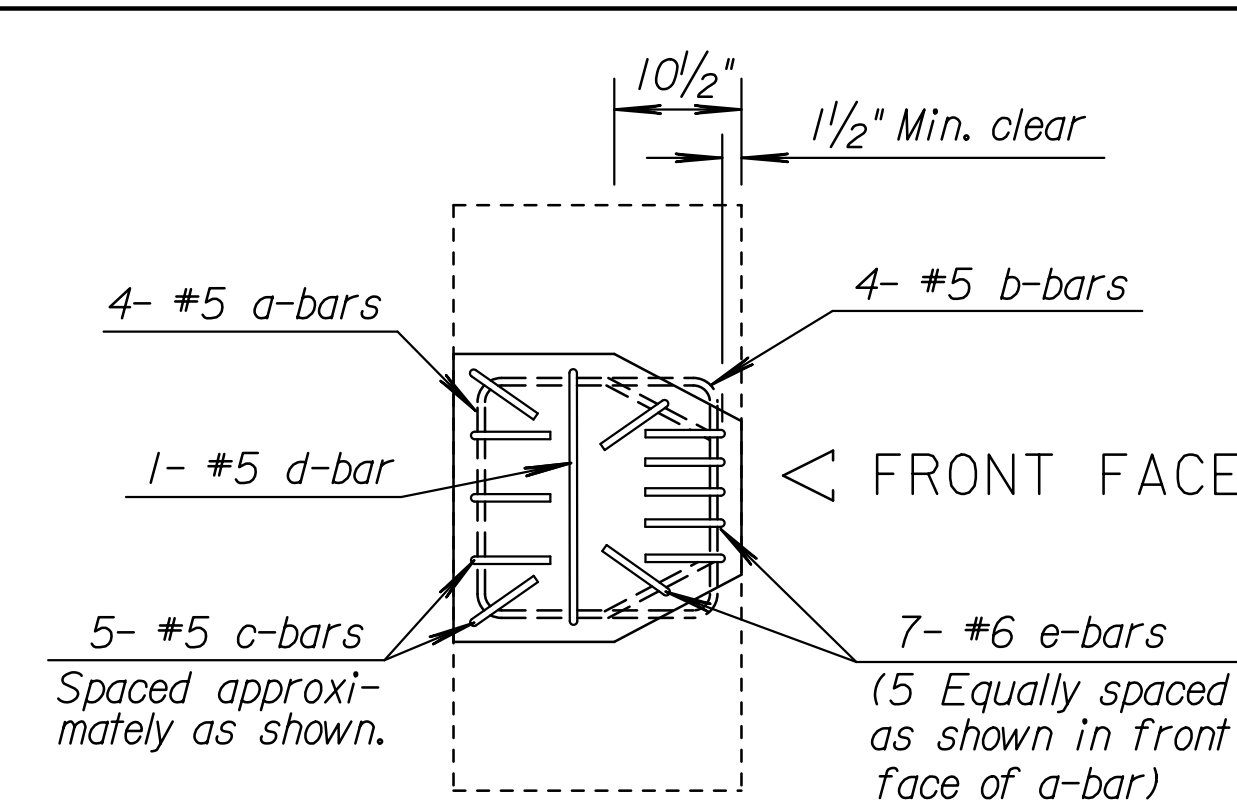
PLAN (Tension Strut Backup)



ELEVATION (Tension Strut Backup)

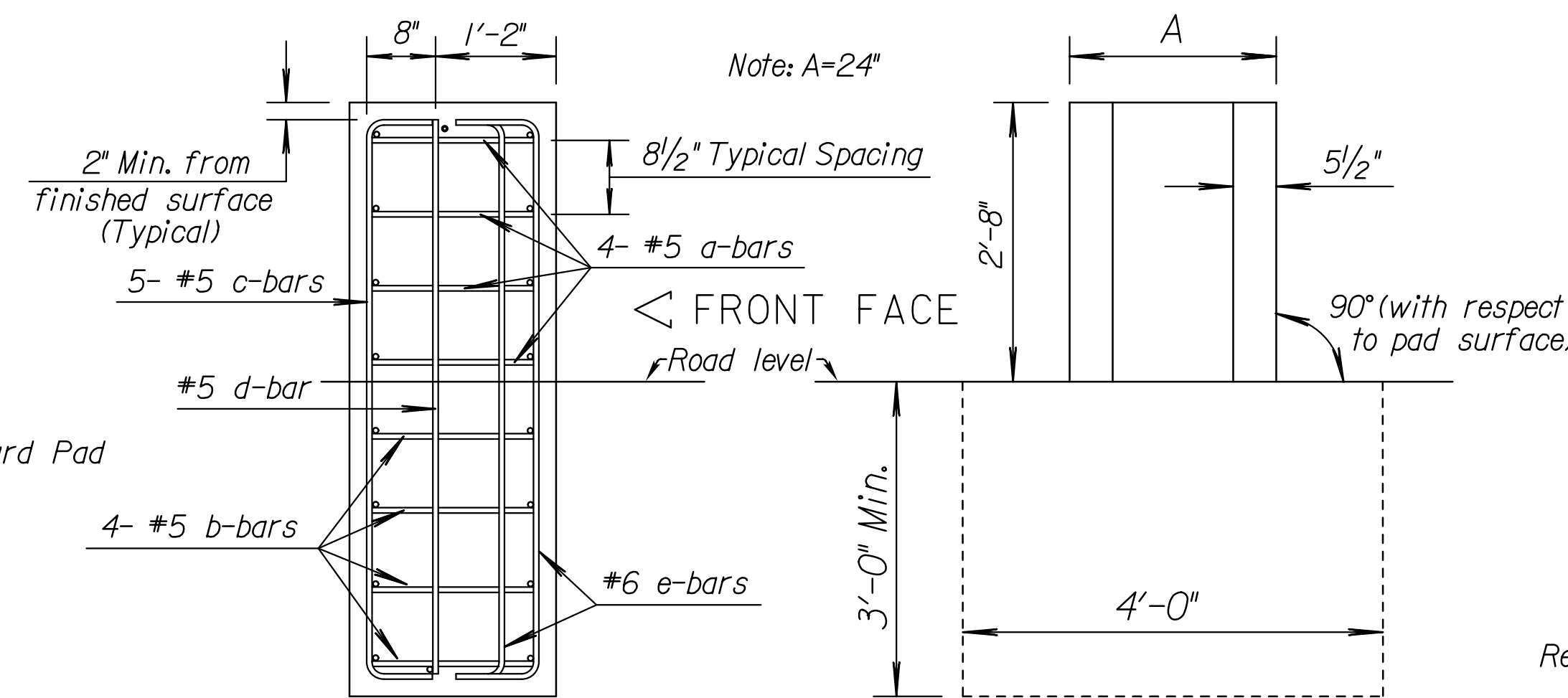


PLAN VIEW CONCRETE PAD (Tension Strut Backup)



TOP VIEW (Concrete Backup)

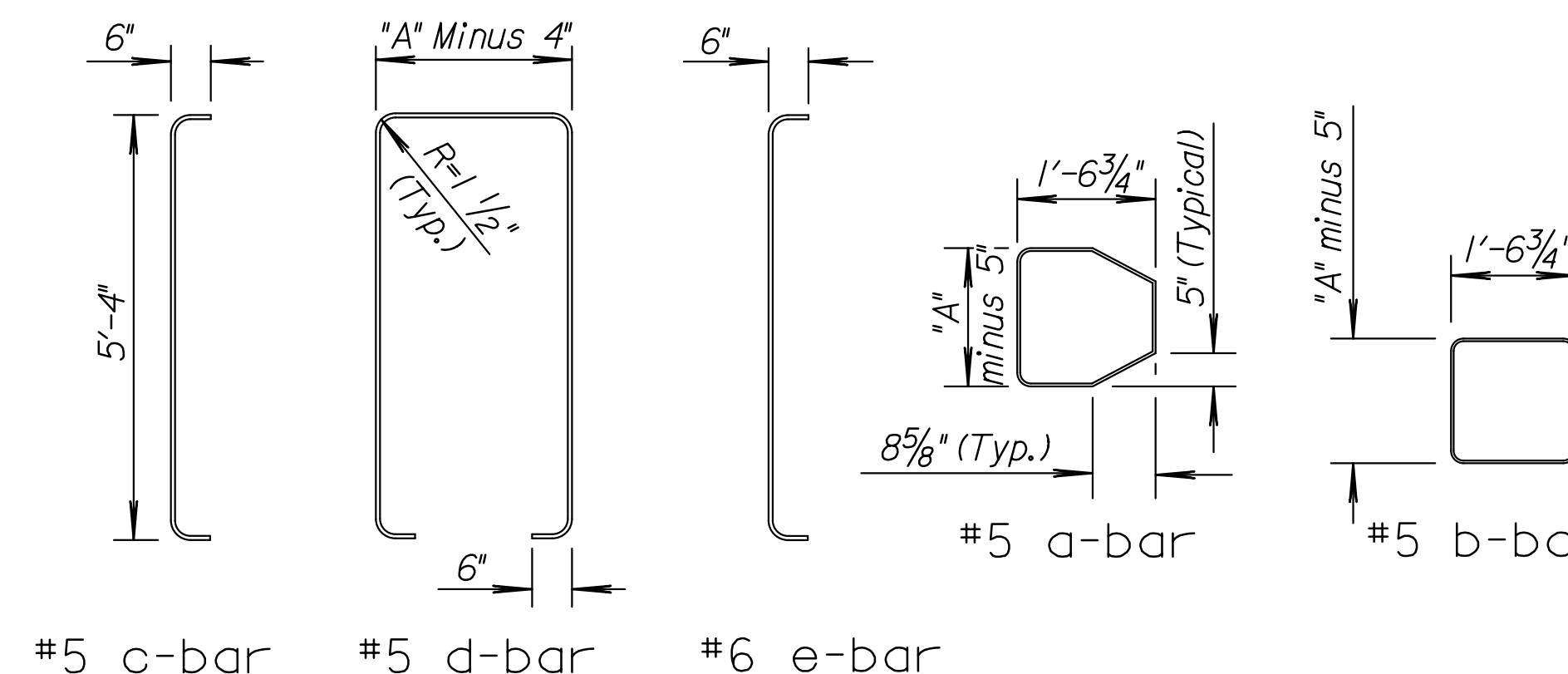
(Reinforcement Detail)



SIDE VIEW

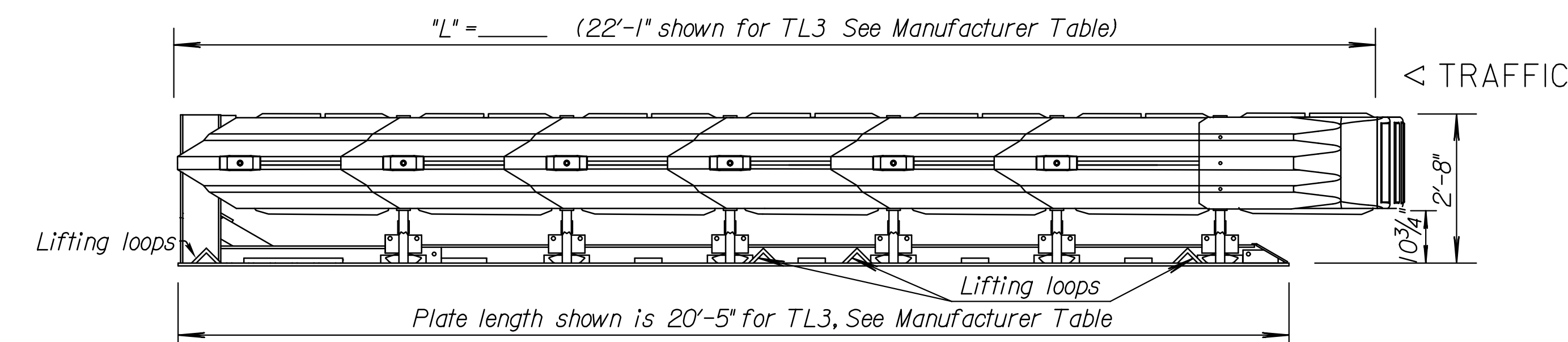
FRONT VIEW

CONCRETE BACKUP DETAILS



BENDING DIAGRAMS (Concrete Backup)

All dimensions are out-to-out on bars unless otherwise noted.



PLAN (QUADGUARD CZ Temporary)