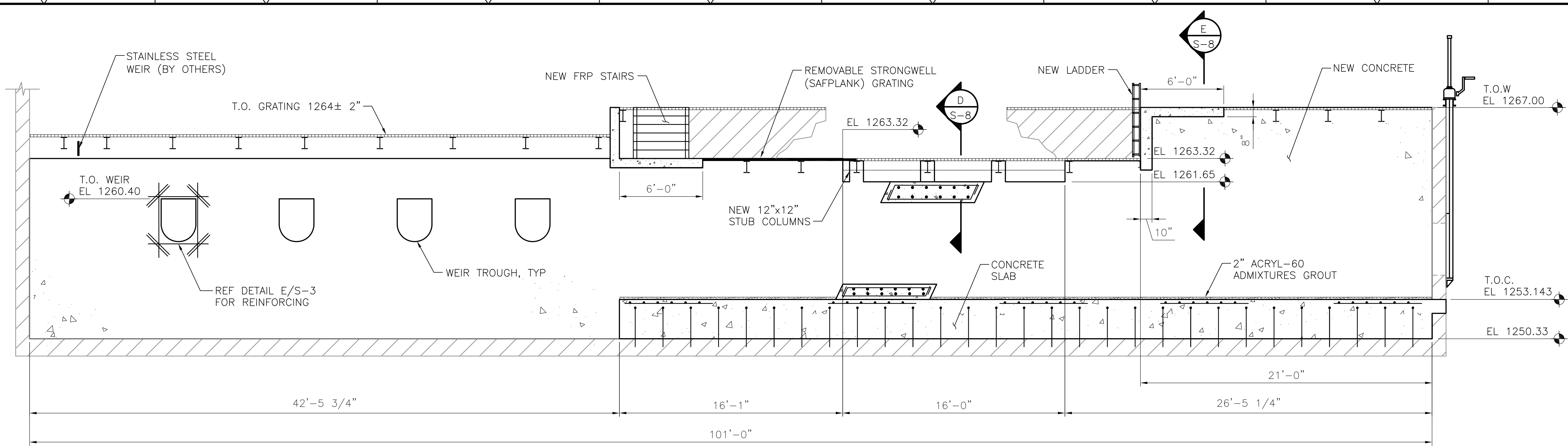
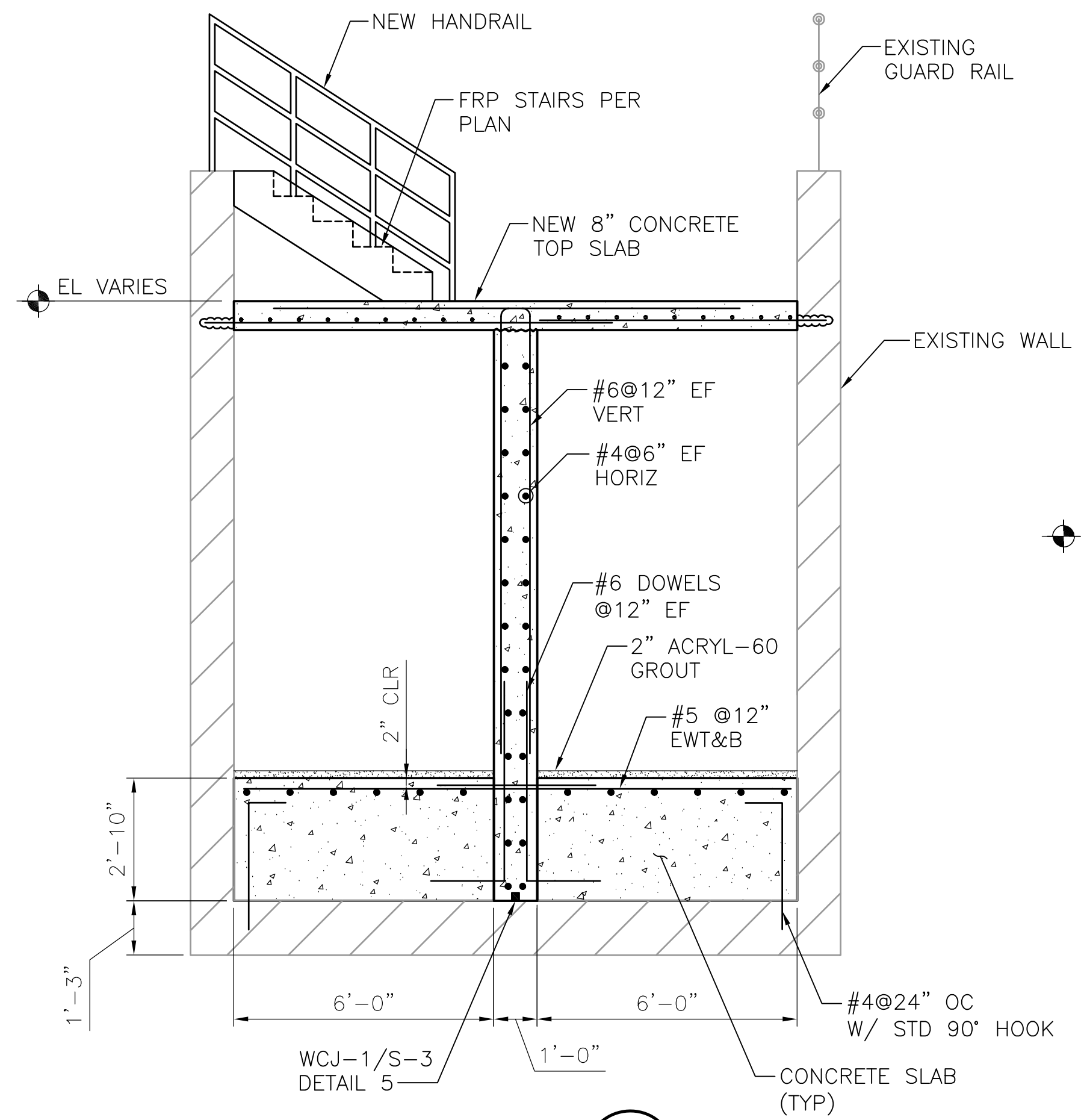


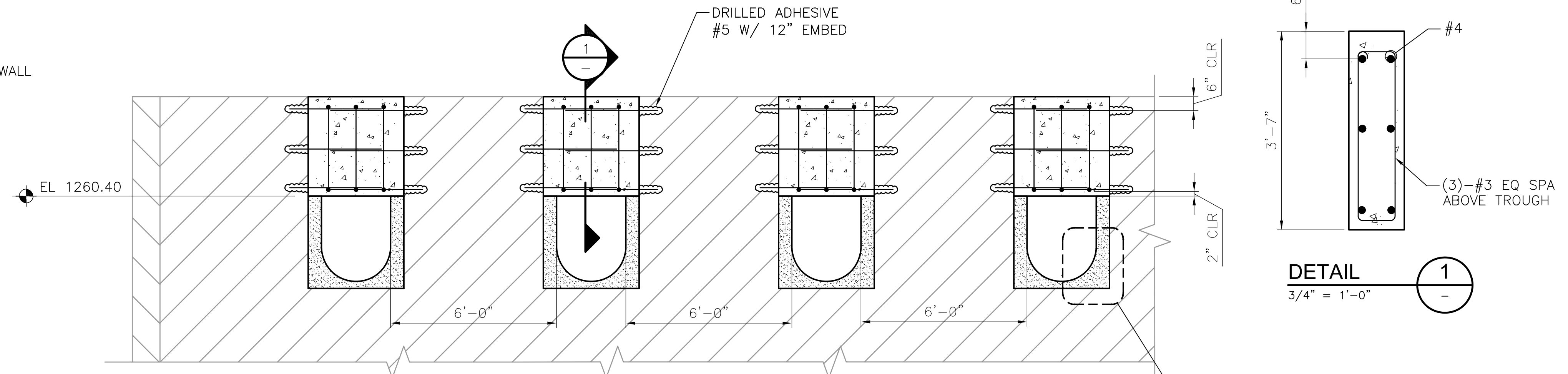
©2014 CDM SMITH ALL RIGHTS RESERVED. REUSE OF DOCUMENTS: THESE DOCUMENTS AND DESIGNS PROVIDED BY PROFESSIONAL SERVICE, INCORPORATED HEREIN, ARE THE PROPERTY OF CDM SMITH AND ARE NOT TO BE USED, IN WHOLE OR PART, FOR ANY OTHER PROJECT WITHOUT THE WRITTEN AUTHORIZATION OF CDM SMITH.



**SECTION A**  
1/4" = 1'-0"  
S-5



**SECTION B**  
3/8" = 1'-0"  
S-5



**SECTION C**  
3/8" = 1'-0"  
S-5

**DETAIL 1**  
3/4" = 1'-0"  
-

REV. NO.	DATE	DRWN	CHKD	REMARKS

DESIGNED BY: \_\_\_\_\_  
 DRAWN BY: \_\_\_\_\_  
 SHEET CHK'D BY: \_\_\_\_\_  
 CROSS CHK'D BY: \_\_\_\_\_  
 APPROVED BY: \_\_\_\_\_  
 DATE: APRIL 2015

**CDM Smith**  
 9200 Ward Parkway, Suite 500  
 Kansas City, MO 64114  
 Tel: (816) 444-9270  
 MO COA No. 001431

**DUBOIS CONSULTANTS**  
 CIVIL & STRUCTURAL ENGINEERING  
 5737 SWOPE PARKWAY  
 KANSAS CITY, MO. 64130  
 (816) 333-7700 FAX (816) 333-7722  
 www.dubois.com  
 MO COA No. 001483

CITY OF WICHITA, KANSAS  
 WATER AND SEWER DEPARTMENT  
**SEWAGE TREATMENT PLANT NO.2  
 IMPROVEMENTS UV DISINFECTION**

**EFFLUENT UV DISINFECTION FACILITY  
 SECTIONS AND DETAILS**



PROJECT NO. 2395-104609  
 FILE NAME: \_\_\_\_\_  
 SHEET NO. **S-7**