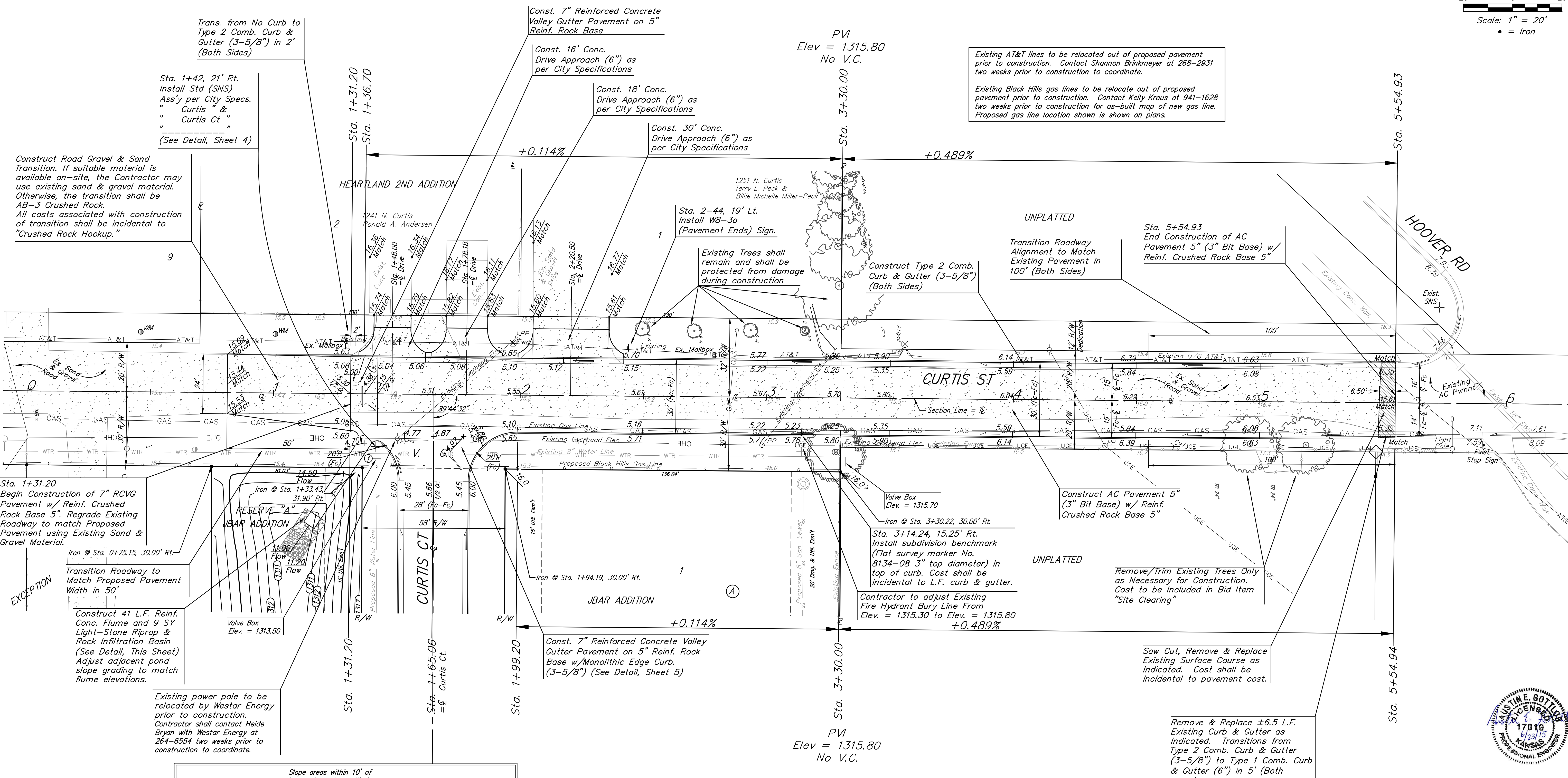
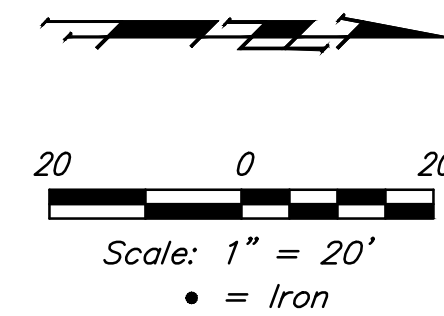


BENCHMARKS:
 Square cut top of curb 16"± south
 of SE corner of Reserve "B".
 Elev. = 1315.95 (NAVD88)



Construct Road Gravel & Sand Transition. If suitable material is available on-site, the Contractor may use existing sand & gravel material. Otherwise, the transition shall be AB-3 Crushed Rock. All costs associated with construction of transition shall be incidental to "Crushed Rock Hookup."

Sta. 1+42, 21' Rt.
 Install Std (SNS)
 Ass'y per City Specs.
 "Curtis" &
 "Curtis Ct"
 (See Detail, Sheet 4)

Const. 7" Reinforced Concrete Valley Gutter Pavement on 5" Reinf. Rock Base

Const. 16' Conc. Drive Approach (6") as per City Specifications

Const. 18' Conc. Drive Approach (6") as per City Specifications

Const. 30' Conc. Drive Approach (6") as per City Specifications

PVI
 Elev = 1315.80
 No V.C.

Existing AT&T lines to be relocated out of proposed pavement prior to construction. Contact Shannon Brinkmeyer at 268-2931 two weeks prior to construction to coordinate.

Existing Black Hills gas lines to be relocate out of proposed pavement prior to construction. Contact Kelly Kraus at 941-1628 two weeks prior to construction for as-built map of new gas line. Proposed gas line location shown is shown on plans.

UNPLATTED
 Transition Roadway Alignment to Match Existing Pavement in 100' (Both Sides)

Sta. 5+54.93
 End Construction of AC Pavement 5" (3" Bit Base) w/ Reinf. Crushed Rock Base 5"

Sta. 2-44, 19' Lt.
 Install WB-3a (Pavement Ends) Sign.

Existing Trees shall remain and shall be protected from damage during construction

Construct Type 2 Comb. Curb & Gutter (3-5/8") (Both Sides)

Sta. 1+31.20
 Begin Construction of 7" RCVG Pavement w/ Reinf. Crushed Rock Base 5". Regrade Existing Roadway to match Proposed Pavement using Existing Sand & Gravel Material.

EXCEPTION
 Transition Roadway to Match Proposed Pavement Width in 50'

Construct 41 L.F. Reinf. Conc. Flume and 9 SY Light-Stone Rip-rap & Rock Infiltration Basin (See Detail, This Sheet) Adjust adjacent pond slope grading to match flume elevations.

Existing power pole to be relocated by Westar Energy prior to construction. Contractor shall contact Heidi Bryan with Westar Energy at 264-6554 two weeks prior to construction to coordinate.

Valve Box
 Elev. = 1315.70
 Iron @ Sta. 3+30.22, 30.00' Rt.
 Sta. 3+14.24, 15.25' Rt.
 Install subdivision benchmark (Flat survey marker No. 8134-08 3" top diameter) in top of curb. Cost shall be incidental to L.F. curb & gutter.

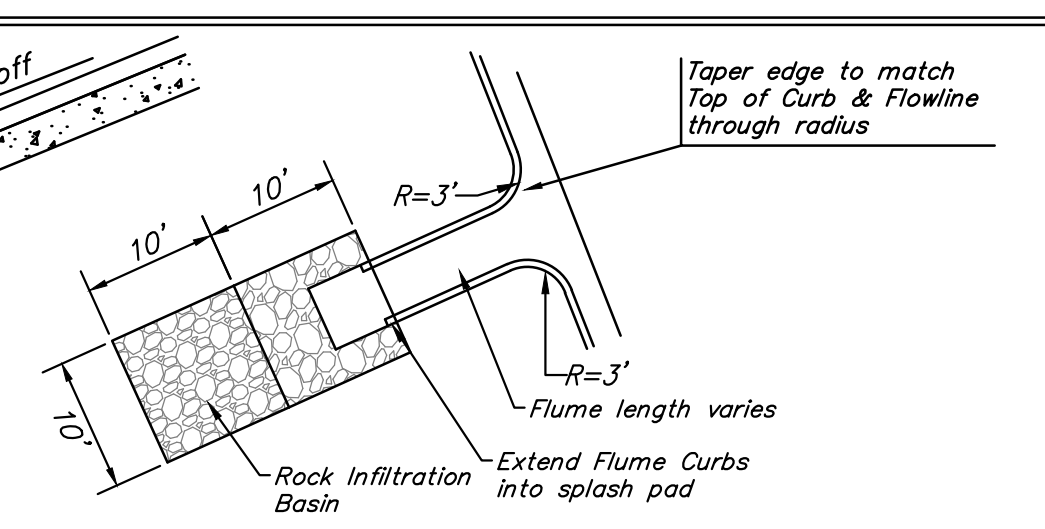
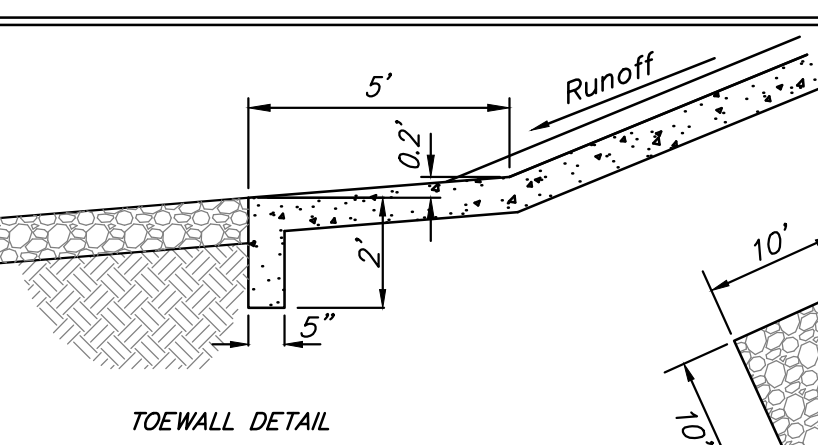
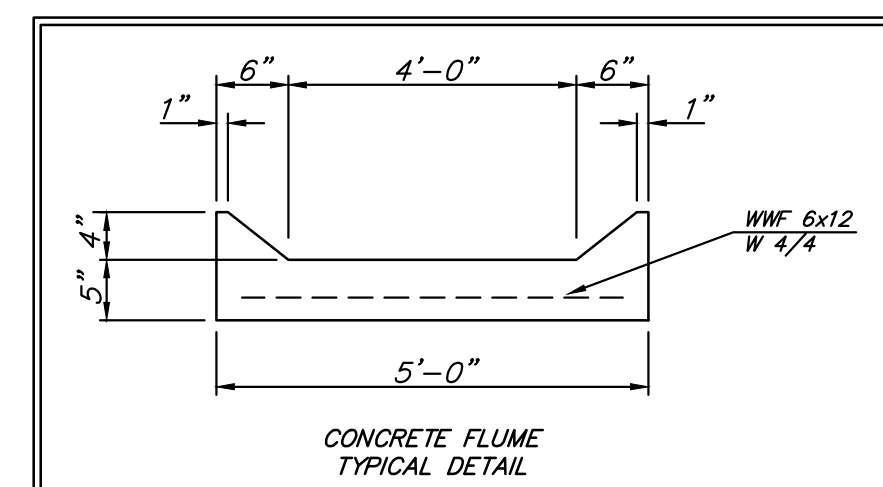
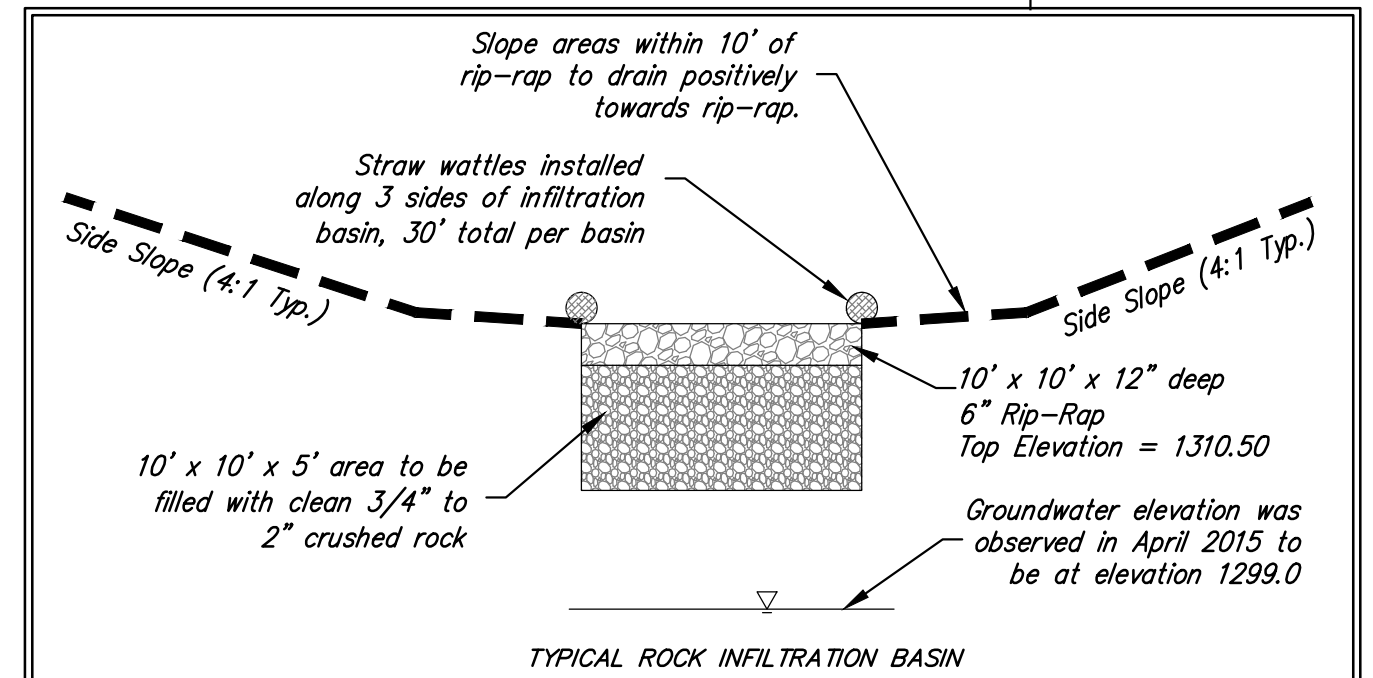
Const. 7" Reinforced Concrete Valley Gutter Pavement on 5" Reinf. Rock Base w/Monolithic Edge Curb. (3-5/8") (See Detail, Sheet 5)

Construct AC Pavement 5" (3" Bit Base) w/ Reinf. Crushed Rock Base 5"

Remove/Trim Existing Trees Only as Necessary for Construction. Cost to be Included in Bid Item "Site Clearing"

Saw Cut, Remove & Replace Existing Surface Course as Indicated. Cost shall be incidental to pavement cost.

Remove & Replace ±6.5 L.F. Existing Curb & Gutter as Indicated. Transitions from Type 2 Comb. Curb & Gutter (3-5/8") to Type 1 Comb. Curb & Gutter (6") in 5' (Both Sides).



Baughman		JBAR ADDITION	
		CURTIS	
		Sta. 0+80 to Sta. 5+54.94	
Baughman Company, P.A. 315 Ellis St. Wichita, KS 67211 P 316-262-7271 F 316-262-0149 ENGINEERING SURVEYING PLANNING LANDSCAPE ARCHITECTURE			
PROJECT NUMBER 472-85211	DESIGN AEG	DRAWN JAK	
REVISIONS:	APPROVED	DATE 6/18/15	
	SCALE Noted	SHEET	
			7 OF 20