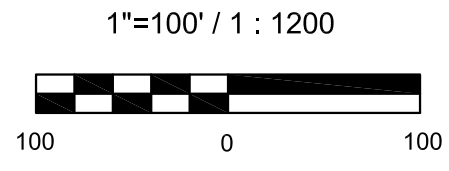
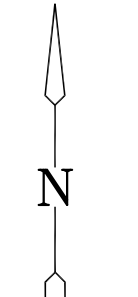
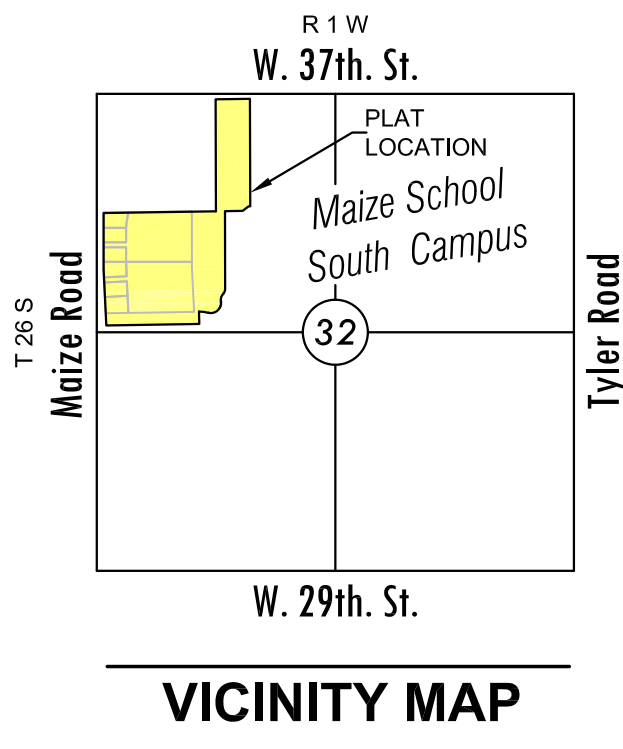


# FINAL PLAT

## FOX RIDGE PLAZA ADDITION

### AN ADDITION TO WICHITA, SEDGWICK COUNTY, KANSAS

#### A replat of a portion of Maize South School Campus Addition

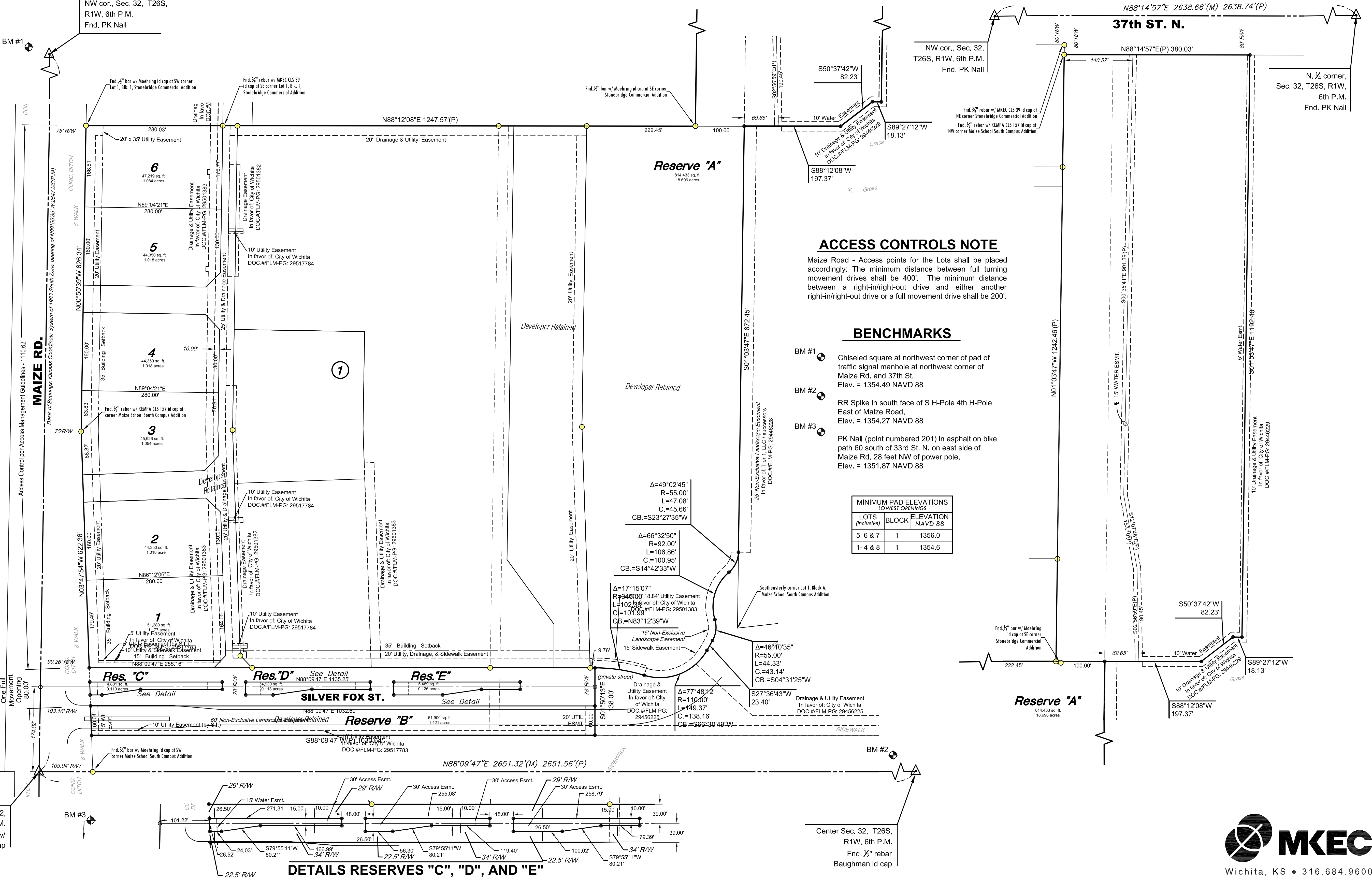


Basis of Bearing: Kansas coordinate system of 1983 south zone grid bearing of N00°55'39"W along the West line of the Northwest 1/4, Sec. 32, T26S, R1W, 6th P.M.

This plat is surveyed and platted on NAD83 using Kansas state plane south zone coordinates, modified to the surface, having a combined adjustment scale factor of 1.000120014

### LEGEND

- Date of Survey: Oct. 5th, 2011
- △ = Section corner monument found
  - = Found see annotation
  - = Set 3/8" rebar w/ MKEC CLS 39 id cap
  - (M) = Measured
  - (P) = Platted



### ACCESS CONTROLS NOTE

Maize Road - Access points for the Lots shall be placed accordingly. The minimum distance between full turning movement drives shall be 400'. The minimum distance between a right-in/right-out drive and either another right-in/right-out drive or a full movement drive shall be 200'.

### BENCHMARKS

- BM #1  
Chiseled square at northwest corner of pad of traffic signal manhole at northwest corner of Maize Rd. and 37th St.  
Elev. = 1354.49 NAVD 88
- BM #2  
RR Spike in south face of S H-Pole 4th H-Pole East of Maize Road.  
Elev. = 1354.27 NAVD 88
- BM #3  
PK Nail (point numbered 201) in asphalt on bike path 60 south of 33rd St. N. on east side of Maize Rd. 28 feet NW of power pole.  
Elev. = 1351.87 NAVD 88

MINIMUM PAD ELEVATIONS LOWEST OPENINGS		
LOTS (inclusive)	BLOCK	ELEVATION NAVD 88
5, 6 & 7	1	1356.0
1-4 & 8	1	1354.6

### DETAILS RESERVES "C", "D", AND "E"

