

BENCHMARKS:
 BM #1: "□" Top of Curb NE of the most easterly corner of Lot 28, Block E, Falcon Falls 2nd Addition Elev. = 1361.23 (NGVD29)

BM #2: "□" Top of Curb North of the NE corner of Lot 2, Block D, Falcon Falls 3rd Addition Elev. = 1351.76 (NGVD29)

 = Easements To Be Graded

Approximate Easement Grading Quantities:
 (For Information Only) C.Y.

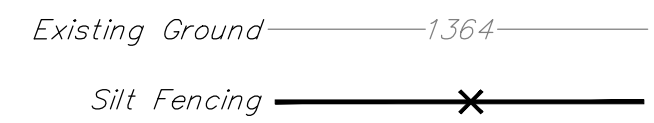
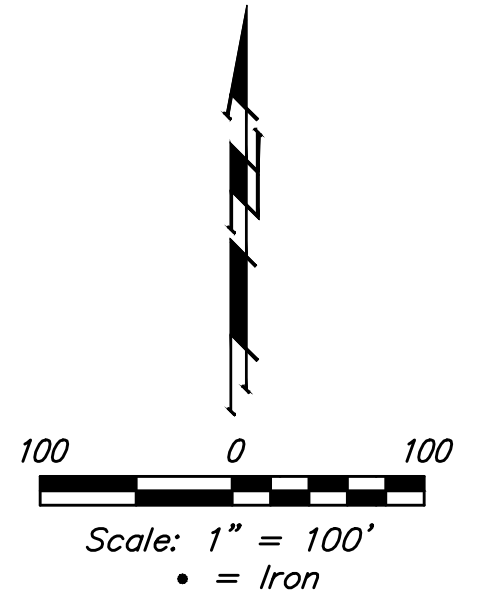
Excavation	288	Fill	714
------------	-----	------	-----

The Contractor shall grade the easements as shown to the elevations given on the easement grading plan.

The Contractor shall 'straight' grade the easements between the elevations given. Where a callout designates 'Match', the Contractor will grade to the existing ground elevation.

Excess excavation from easement grading and from sanitary sewer construction shall be placed on the lots as indicated to the elevations shown.



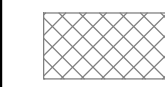
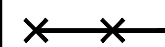
All cost to be included in the Lump Sum bid item "Easement Grading"



NOTES:
 Contractor shall make sure all erosion control is in place before project is accepted. This plan represents the minimum standard. Any additional erosion control measures shall be installed by the Contractor as needed.

All areas disturbed during construction shall be seeded, mulched, and fertilized as per Cover Sheet General Notes.

EROSION CONTROL PLAN LEGEND

-  - CURB INLET PROTECTION
-  - DROP INLET PROTECTION
-  - BACK OF CURB PROTECTION
-  - SILT FENCING

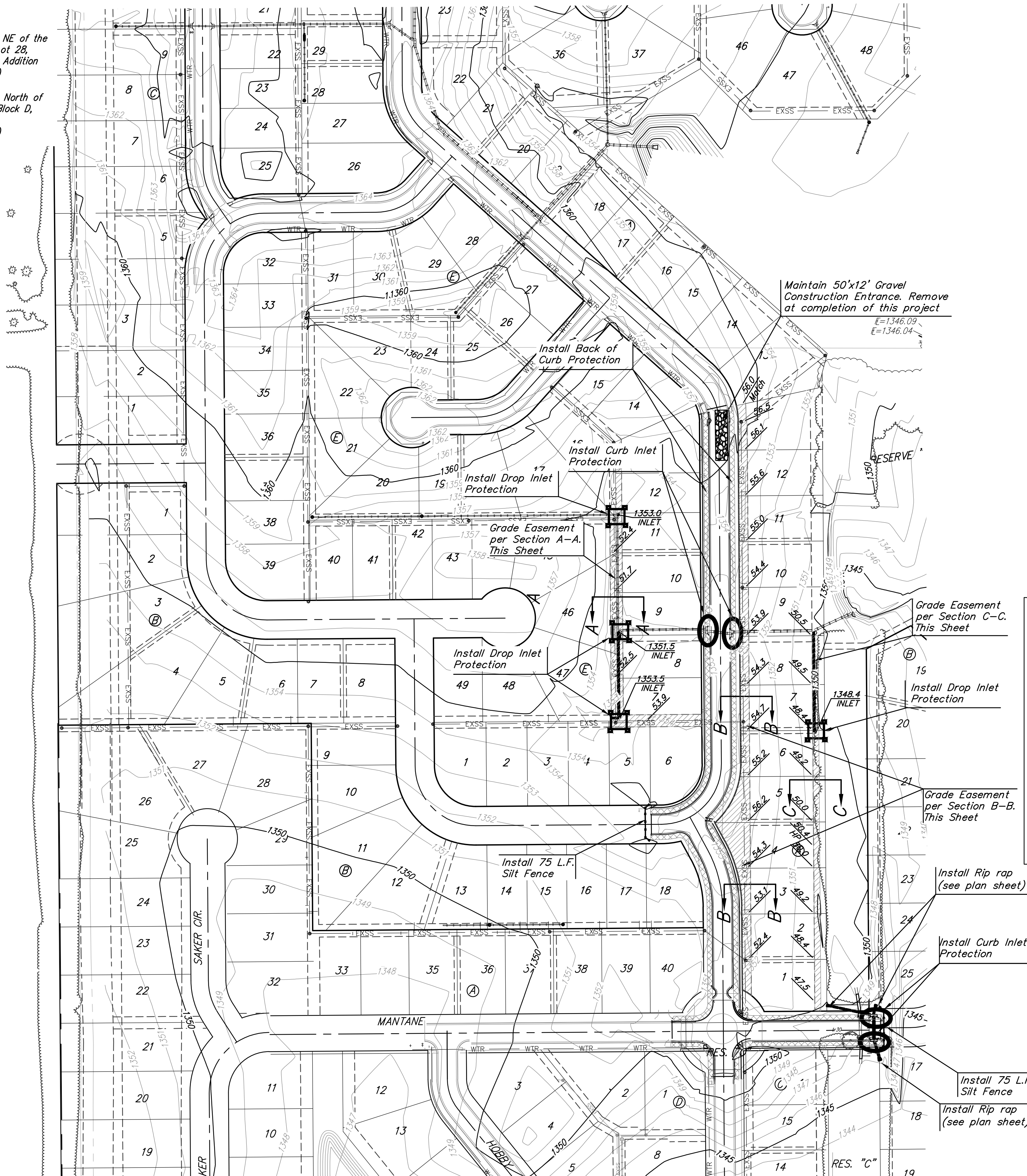
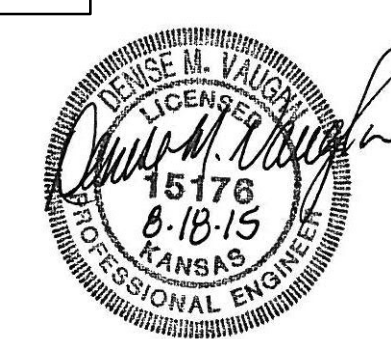
EROSION CONTROL MEASURE	INSTALL
BACK OF CURB PROTECTION (LF)	2,845
CONSTRUCTION ENTRANCE (EA)	0
CURB INLET BARRIER (EA)	4
DITCH CHECK (EA)	0
DROP INLET PROTECTION (EA)	4
EROSION CONTROL (LS)	0
EROSION CONTROL BERM (LF)	0
SILT FENCE (LF)	150
EROSION CONTROL MAT (SY)	0
MAINTAIN EROSION CONTROL BMP's (LS)	1

* ALL EXISTING BMPs INCLUDING CONSTRUCTION ENTRANCE, SEDIMENT BARRIERS, SILT FENCE, CUT-OFF TRENCH, AND EROSION CONTROL MAT SHALL BE MAINTAINED AND REPAIRED IF NECESSARY.

Baughman Falcon Falls 2nd Addition - Phase 3B
EROSION CONTROL
 Street / SWS Improvements

Baughman Company, P.A. 315 Ellis St. Wichita, KS 67211 P 316-262-7271 F 316-262-0149
 ENGINEERING | SURVEYING | PLANNING | LANDSCAPE ARCHITECTURE

PROJECT NUMBER 472-85106	DESIGN DMV	DRAWN JAK
REVISIONS:	APPROVED	DATE 7/15
	SCALE Noted	SHEET 13 OF 28



Maintain 50'x12' Gravel Construction Entrance. Remove at completion of this project
 E=1346.09
 E=1346.04

