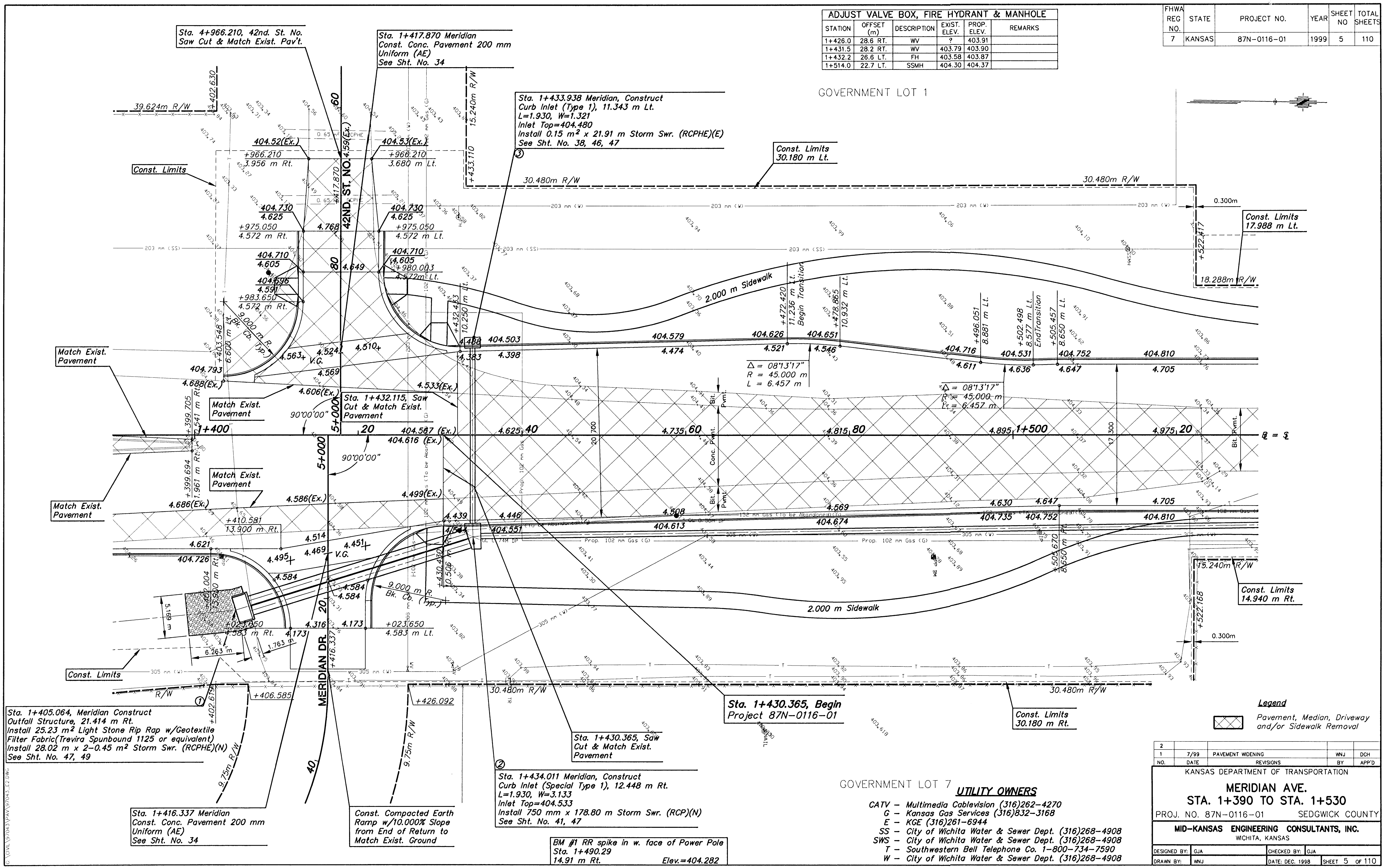


FHWA REG. NO.	STATE	PROJECT NO.	YEAR	SHEET NO.	TOTAL SHEETS
7	KANSAS	87N-0116-01	1999	5	110

STATION	OFFSET (m)	DESCRIPTION	EXIST. ELEV.	PROP. ELEV.	REMARKS
1+426.0	28.6 RT.	WV	?	403.91	
1+431.5	28.2 RT.	WV	403.79	403.90	
1+432.2	26.6 LT.	FH	403.58	403.87	
1+514.0	22.7 LT.	SSMH	404.30	404.37	

DATE	
BY	
REFERENCES NOTED	
REFERENCES CHECKED	



Sta. 1+405.064, Meridian Construct Outfall Structure, 21.414 m Rt. Install 25.23 m² Light Stone Rip Rap w/Geotextile Filter Fabric(Trevira Spunbound 1125 or equivalent) Install 28.02 m x 2-0.45 m² Storm Swr. (RCPHE)(N) See Sht. No. 47, 49

Sta. 1+416.337 Meridian Const. Conc. Pavement 200 mm Uniform (AE) See Sht. No. 34

Const. Compacted Earth Ramp w/10.000% Slope from End of Return to Match Exist. Ground

Sta. 1+434.011 Meridian, Construct Curb Inlet (Special Type 1), 12.448 m Rt. L=1.930, W=3.133 Inlet Top=404.533 Install 750 mm x 178.80 m Storm Swr. (RCP)(N) See Sht. No. 41, 47

BM #1 RR spike in w. face of Power Pole Sta. 1+490.29 14.91 m Rt. Elev.=404.282

Sta. 1+430.365, Begin Project 87N-0116-01

Sta. 1+430.365, Saw Cut & Match Exist. Pavement

UTILITY OWNERS

- CATV - Multimedia Cablevision (316)262-4270
- G - Kansas Gas Services (316)832-3168
- E - KGE (316)261-6944
- SS - City of Wichita Water & Sewer Dept. (316)268-4908
- SWS - City of Wichita Water & Sewer Dept. (316)268-4908
- T - Southwestern Bell Telephone Co. 1-800-734-7590
- W - City of Wichita Water & Sewer Dept. (316)268-4908

2					
1	7/99	PAVEMENT WIDENING	WNJ	DCH	
NO.	DATE	REVISIONS	BY	APP'D	

KANSAS DEPARTMENT OF TRANSPORTATION

MERIDIAN AVE.
STA. 1+390 TO STA. 1+530
 PROJ. NO. 87N-0116-01 SEDGWICK COUNTY

MID-KANSAS ENGINEERING CONSULTANTS, INC.
 WICHITA, KANSAS

DESIGNED BY: GJA	CHECKED BY: GJA
DRAWN BY: WNJ	DATE: DEC. 1998

SHEET 5 OF 110