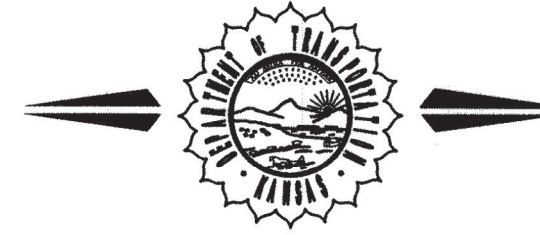


STATE OF KANSAS
DEPARTMENT OF TRANSPORTATION



CONSTRUCTION PLANS FOR PROPOSED
MERIDIAN AVENUE
FROM PAWNEE to McCORMICK

FEDERAL AID PROJECT

FOR
THE CITY OF WICHITA,
SEDGWICK COUNTY, KANSAS

Gary Janzen, P.E., City Engineer

Paving Project

City Project No. 472-85124

O.C.A. No. 707060

Water 448-90688 / O.C.A. 636316

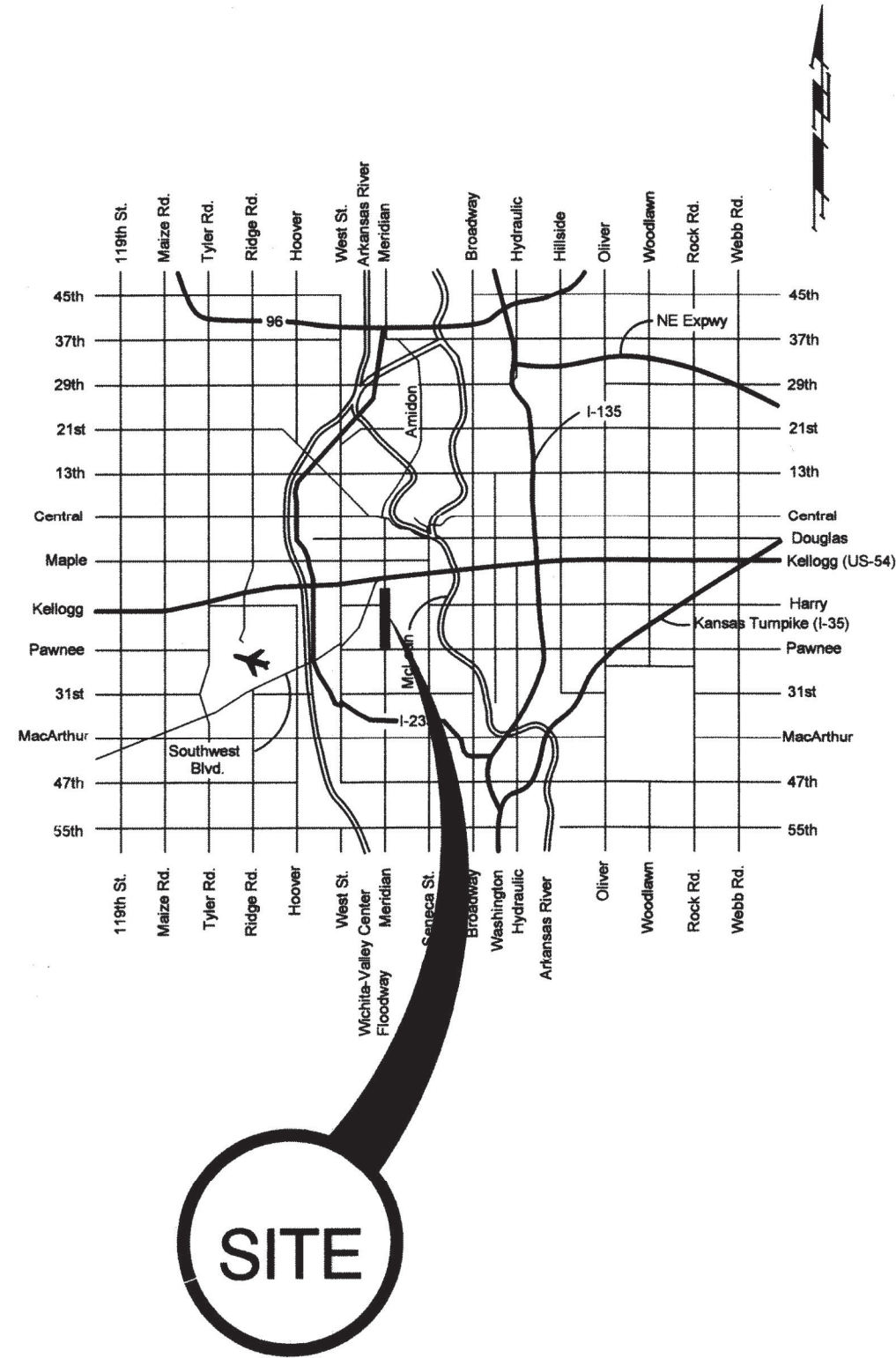
SS 468-85067 / O.C.A. 620753

FHWA REGION NO.	STATE	PROJECT NO.	FISCAL YEAR	SHEET NO.	TOTAL SHEETS
7	KANSAS	087 N-0593-01	2015	1	153

F.A. No. CMQ - N 059(301)

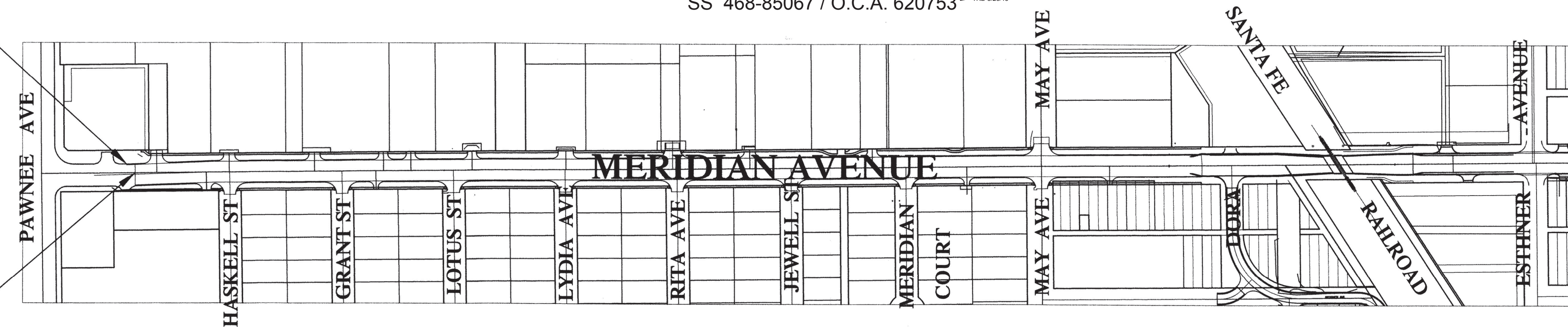
GRADING
SURFACING
STORM SEWER
SEEDING
TRAFFIC SIGNALS

1	Title Sheet
2-3	Keysheets
4	General Notepage
5-7	Typical Sections
8-9	Pavement Details
10	Standard Drive Details
11	Bus Stop Pad Details
12	Sidewalk Flume Details
14-27	Meridian Paving Plans
28	Harry Paving Plans
29	Intersection Joint Plan
30	Intersection Grading Plan
31-36	Valley Gutter Details
37-57	Storm Water Sewer Plan/Profiles
58-66	Storm Water Sewer Details
67-73	Water Line Plan/Profiles
74-75	Fire Hydrant Relocation Plans
76	Water Line Abandonment
77	Water Meter Relocation Table
78-80	Standard Water Line Details
81	Sanitary Sewer Line Plan/Profile
82	Sanitary Sewer Manhole Details
83-96	Meridian Joint Plans
97	Harry St Joint Plans
98	Intersection Signalization Plan
99	Intersection Wiring Plan
100-101	Signalization Details
102-106	Marking and Signing Plan
107-108	Traffic and Street Sign Details
109-114	Construction Sequencing Plan
115-116	Harry Street Detours
117-120	Traffic Control Details
121-124	Recapitulation of Quantities
125-129	Seeding and Sodding Restoration Plan
130-131	Erosion Control Plan
132-136	Erosion BMP Details
137-152	Meridian Avenue Cross Sections
153	Harry Street Cross Sections



STA. 12+26.75
BEGIN CONSTRUCTION
87 N-0593-01

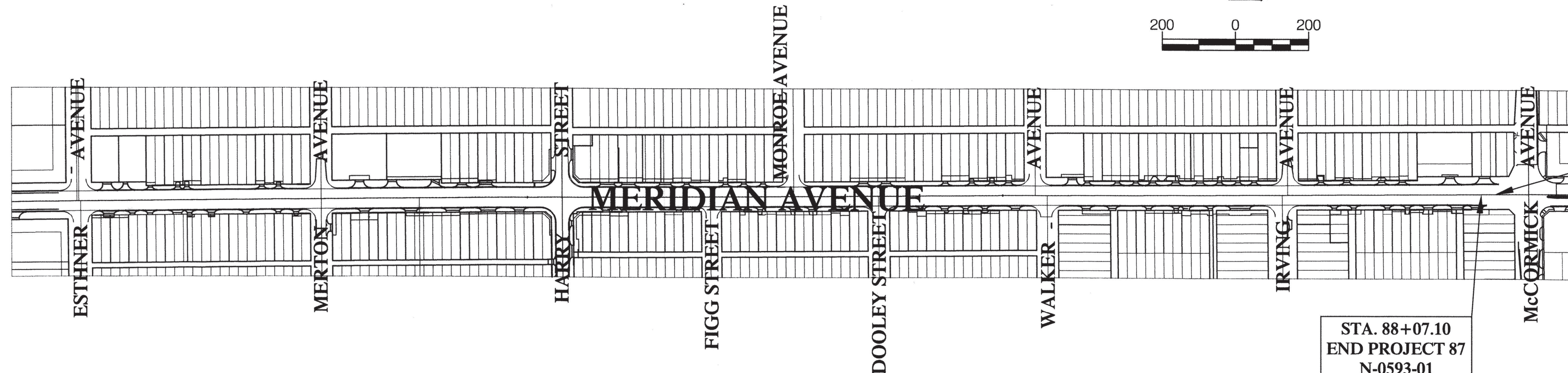
STA. 12+48.77 BEGIN
PROJECT 87 N-0593-01



DESIGN DATA

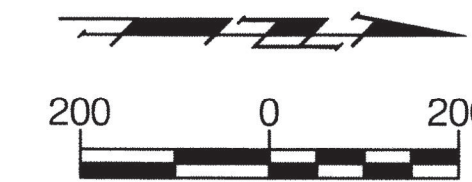
AADT (2006)	14,898
AADT (2030)	18,984
DHV	8%
T	3%
V	40 mph
C of A	N/A
Clear Zone	6'

Gross Length of Project	7,558.33 ft.
Exceptions	563.03 ft.
Additions	0.00 ft.
Net Length of Project	6,995.30 ft.
Net Length of Bridges	0.00 ft.
Net Length of Road	6,995.30 ft.



STA. 88+07.10
END PROJECT 87
N-0593-01

STA. 88+52.78
END CONSTRUCTION



APPROVED - DATE

Gary Janzen 08/14/15
GARY JANZEN, P.E., CITY ENGINEER
CITY OF WICHITA, KANSAS

May 2015