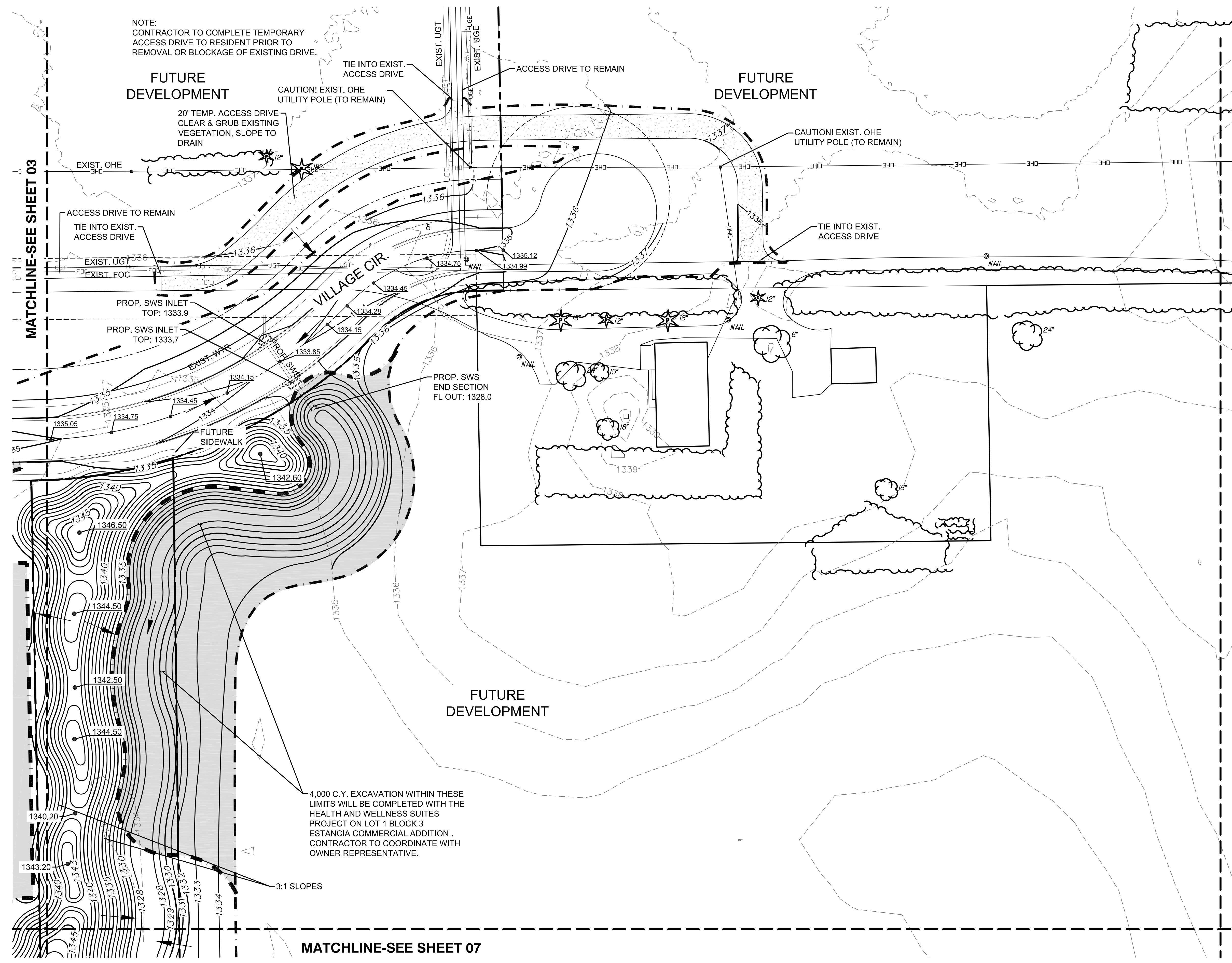


J:\PROJECTS\2014\14010482_PREMIER_ESTANCIA\5-CIVIL\CAD\GRD\14482_GRADING.DWG
 PLOTTED: Wednesday, November 18, 2015 @ 12:39PM

GRADING PLANS FOR
ESTANCIA ADDITION
 PHASE 1



NOTE:
 CONTRACTOR TO COMPLETE TEMPORARY
 ACCESS DRIVE TO RESIDENT PRIOR TO
 REMOVAL OR BLOCKAGE OF EXISTING DRIVE.

FUTURE DEVELOPMENT

FUTURE DEVELOPMENT

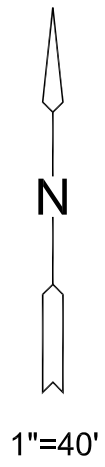
FUTURE DEVELOPMENT

4,000 C.Y. EXCAVATION WITHIN THESE
 LIMITS WILL BE COMPLETED WITH THE
 HEALTH AND WELLNESS SUITES
 PROJECT ON LOT 1 BLOCK 3
 ESTANCIA COMMERCIAL ADDITION.
 CONTRACTOR TO COORDINATE WITH
 OWNER REPRESENTATIVE.

3:1 SLOPES

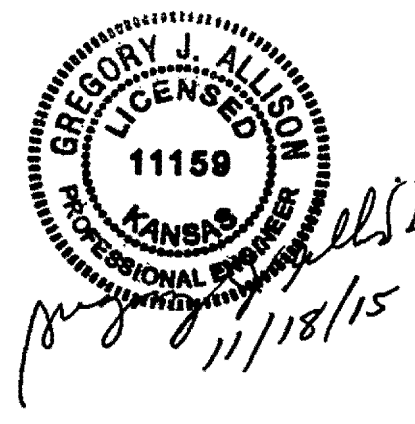
LEGEND

- 1250 --- EXISTING CONTOUR
- 1250 --- PROPOSED CONTOUR
- W — WATER LINE
- (O) — PROP. STORMWATER SEWER
- (O) — EXISTING SANITARY SEWER
- (O) — EXISTING STORMWATER SEWER
- UGT — EXISTING UNDERGROUND TELEPHONE
- UGE — EXISTING UNDERGROUND ELECTRICAL
- OHE — EXISTING OVERHEAD ELECTRICAL
- --- LIMITS OF GRADING
- --- SWALE
- 1329.86 SPOT ELEVATIONS
- /// TREE REMOVAL
- RIP-RAP



NOTES:
 VERTICAL DATUM USED IS NAVD88.

ALL GRADING IS TO FINISHED GRADED.
 CONTRACTOR SHALL OVER EXCAVATE ROADS
 TO TOP OF SUBGRADE. REFER TO ROAD CROSS
 SECTION DETAIL, SEE SHEET 11.


 GREGORY J. ALLMON
 LICENSED PROFESSIONAL ENGINEER
 KANSAS
 11159
 NOV 11/18/15

©2015
 MKEC Engineering
 All Rights Reserved
 www.mkec.com
 These drawings and their contents,
 including, but not limited to, all concepts,
 designs, & ideas are the exclusive
 property of MKEC Engineering (MKEC),
 and may not be used or reproduced in any
 way without the express consent of MKEC.

GRADING PLAN

PROJECT NO.	468-85070
DATE	NOV. 2015
SCALE	1"=40'
DESIGNED	ABC
DRAWN	MLP
CHECKED	ABC

NO.	REVISION	DATE