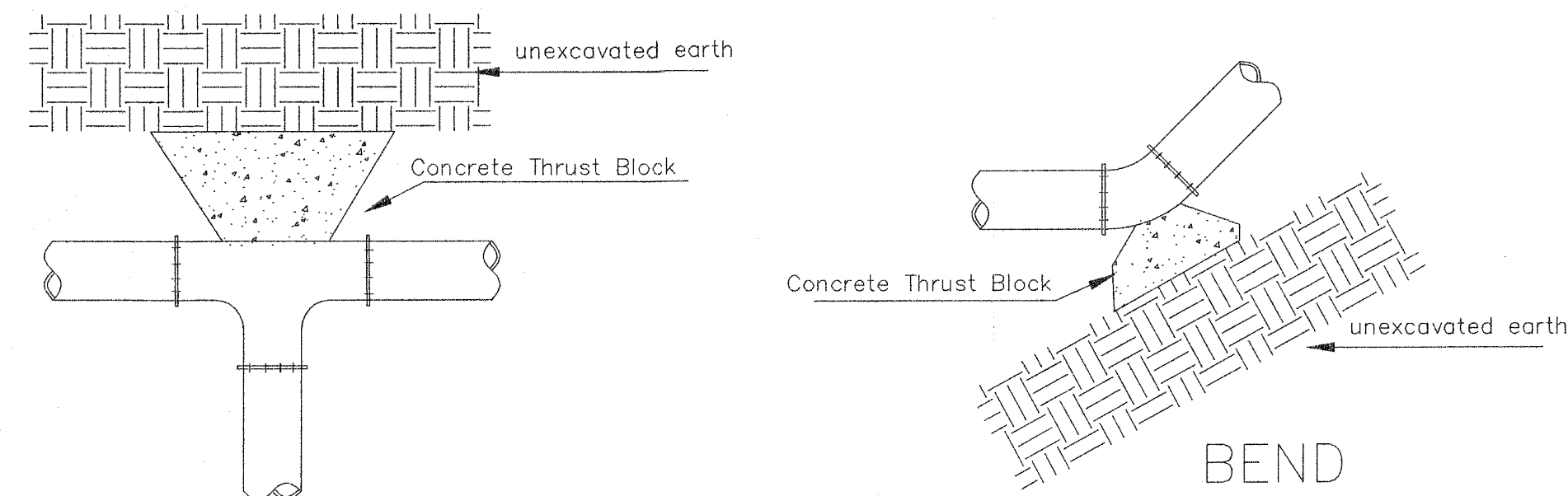
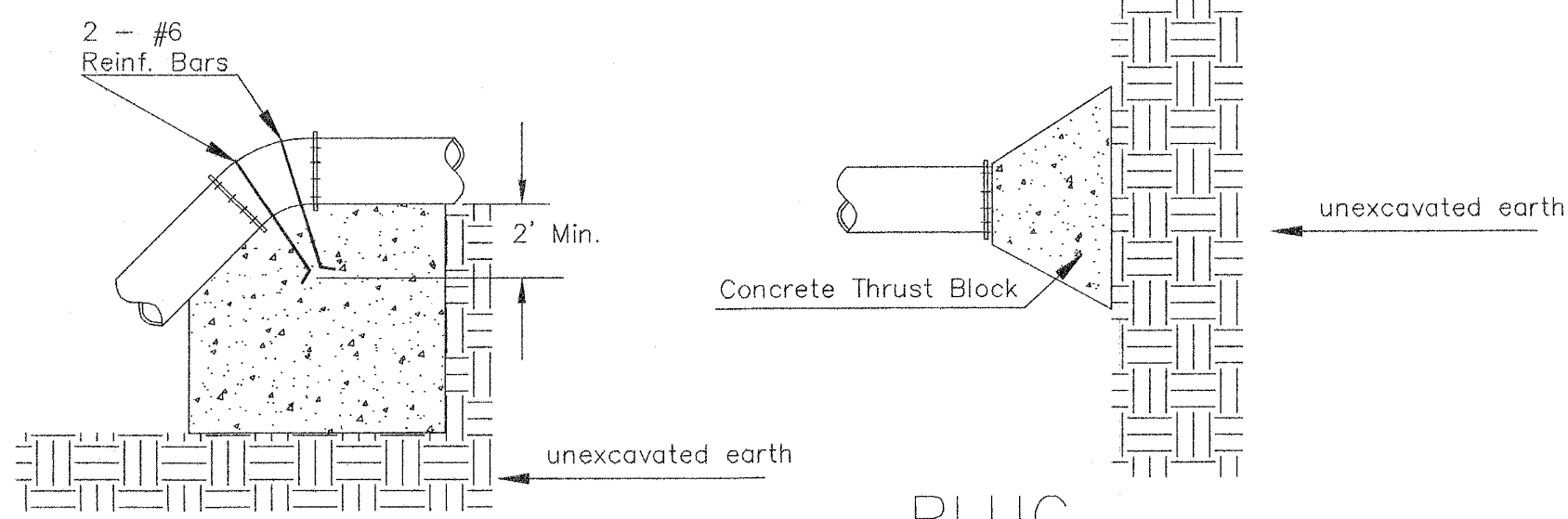


PLOTTED: Monday, May 09, 2016 @ 02:02PM



TEE

BEND

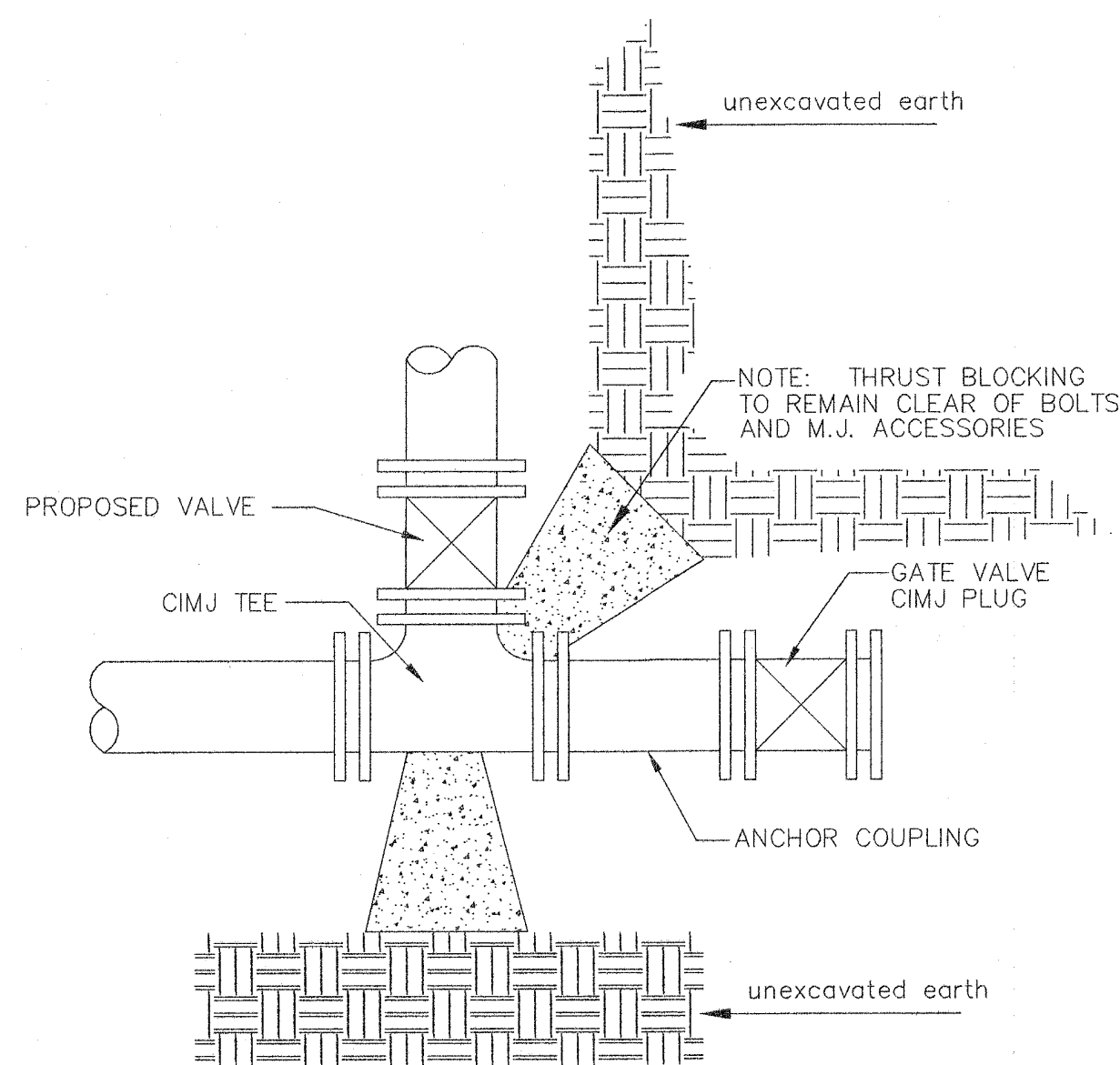


VERTICAL BEND

PLUG

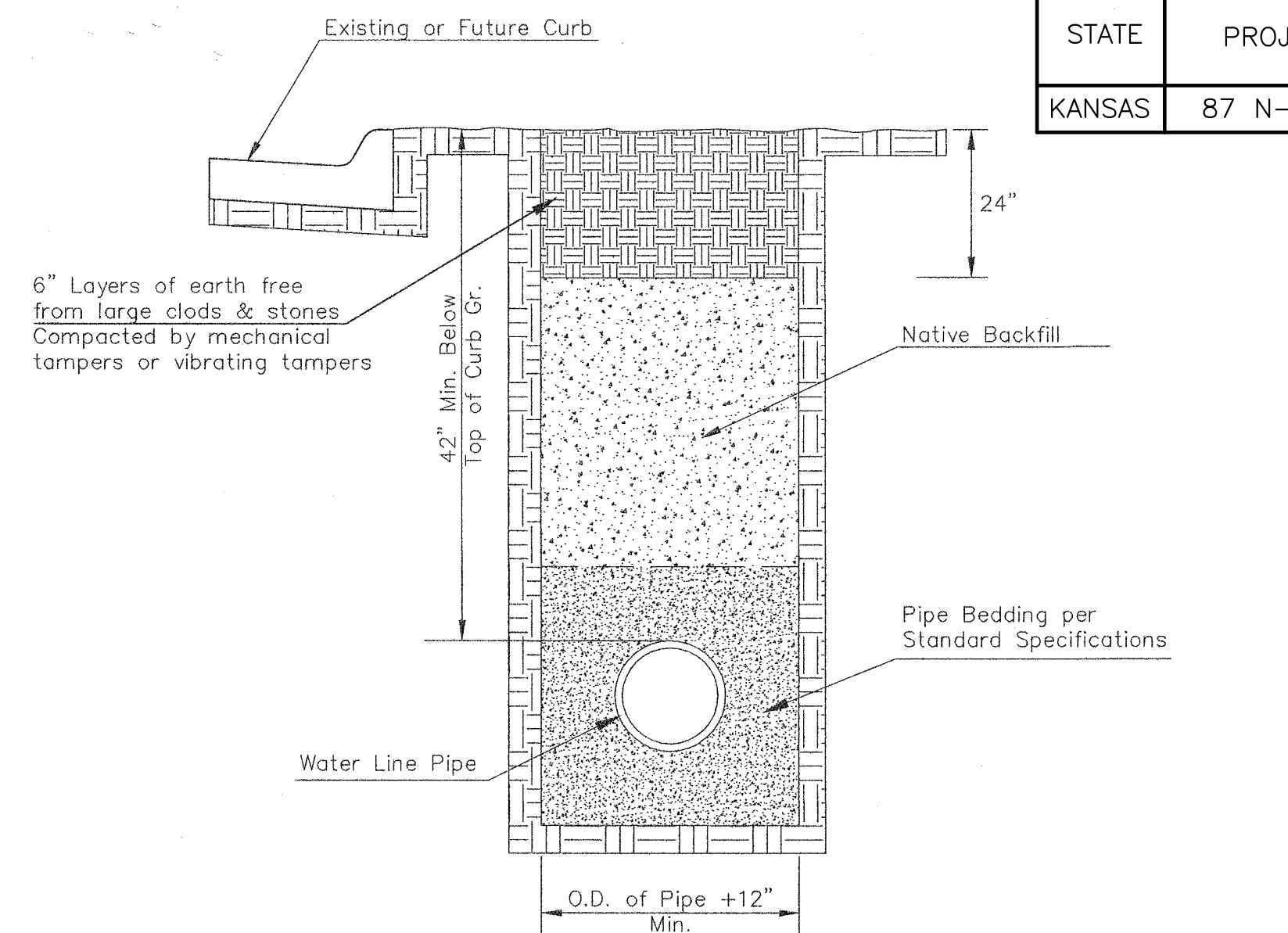
| PIPE SIZE | THRUST AT FITTINGS IN TONS--AT 150#/IN ² P | | | | | |
|-----------|-------------------------------------------------------|------|-------|---------|---------|-------|
| | PLUG | 90° | 45° | 22 1/2° | 11 1/4° | TEE |
| 6" | 2.8 | 3.95 | 2.15 | 1.09 | .55 | 2.8 |
| 8" | 4.9 | 6.95 | 3.75 | 1.90 | .96 | 4.9 |
| 12" | 11.4 | 16.1 | 8.75 | 4.45 | 2.25 | 11.4 |
| 16" | 20.15 | 28.5 | 15.4 | 7.85 | 3.95 | 20.15 |
| 20" | 31.15 | 44.0 | 23.85 | 12.15 | 6.10 | 31.15 |
| 24" | 44.55 | 63.0 | 34.1 | 17.4 | 8.75 | 44.55 |

TYPICAL THRUST BLOCKS

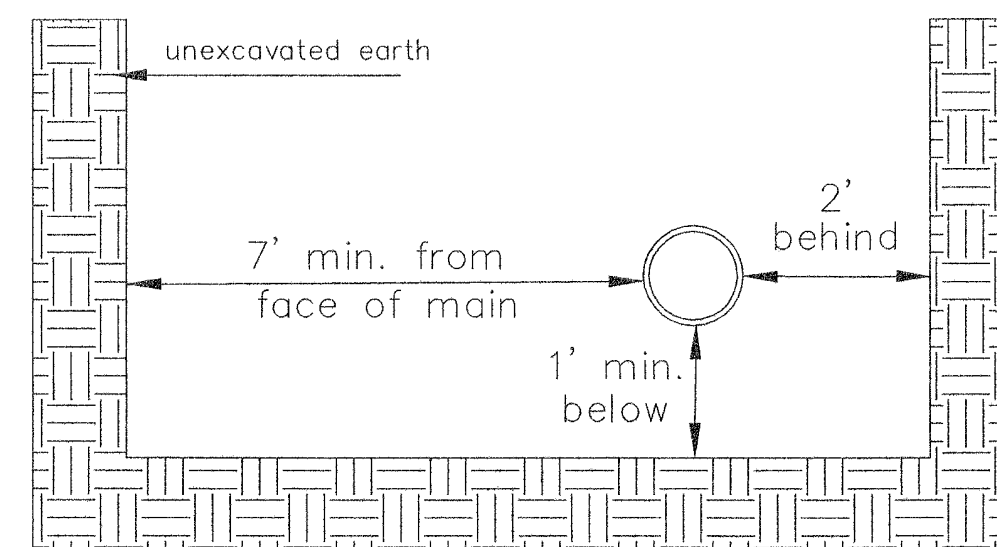


KEY BLOCK DETAIL

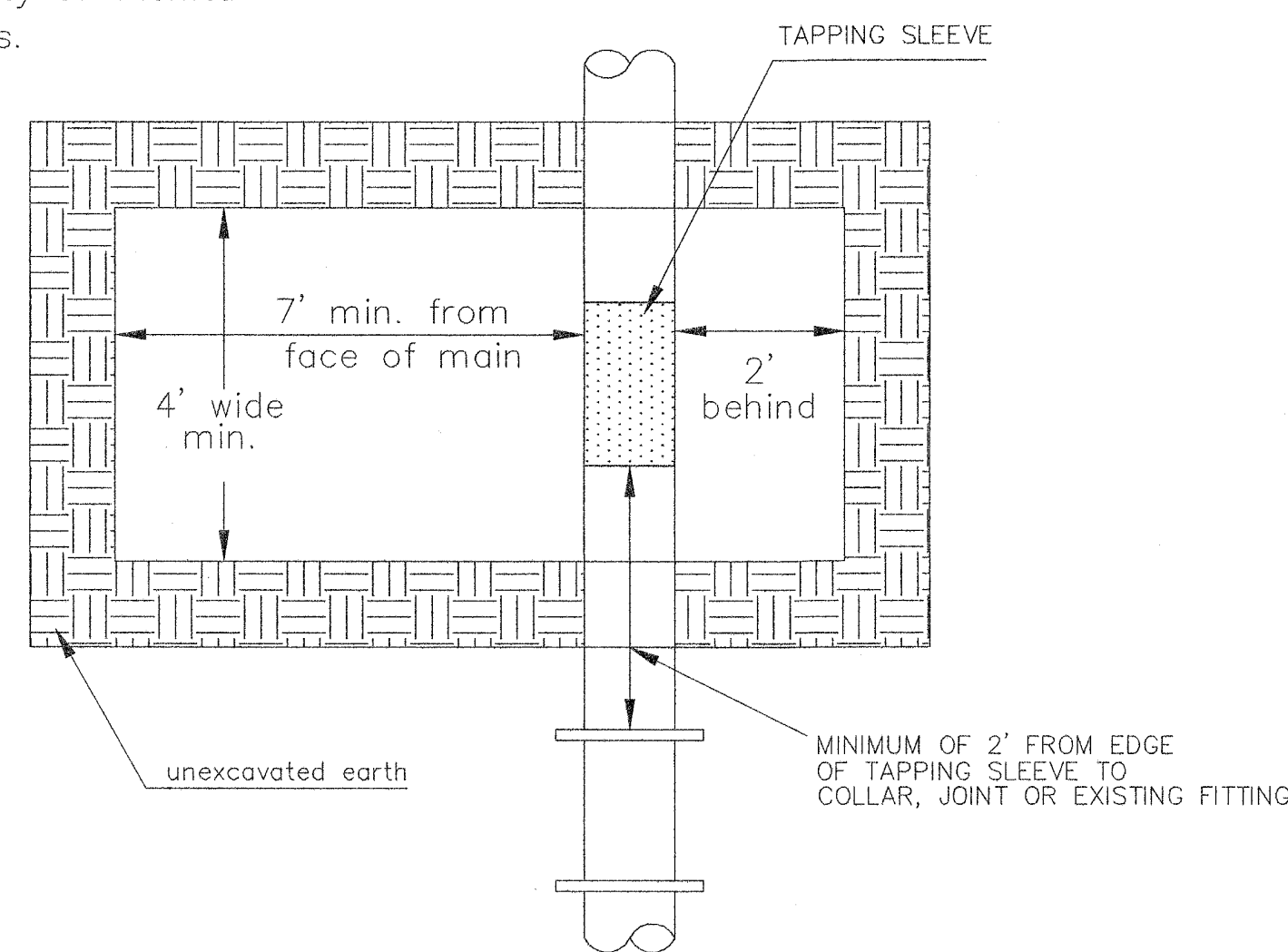
* PLANS GOVERN
UNLESS OTHERWISE NOTED ON PLANS



SIDE VIEW

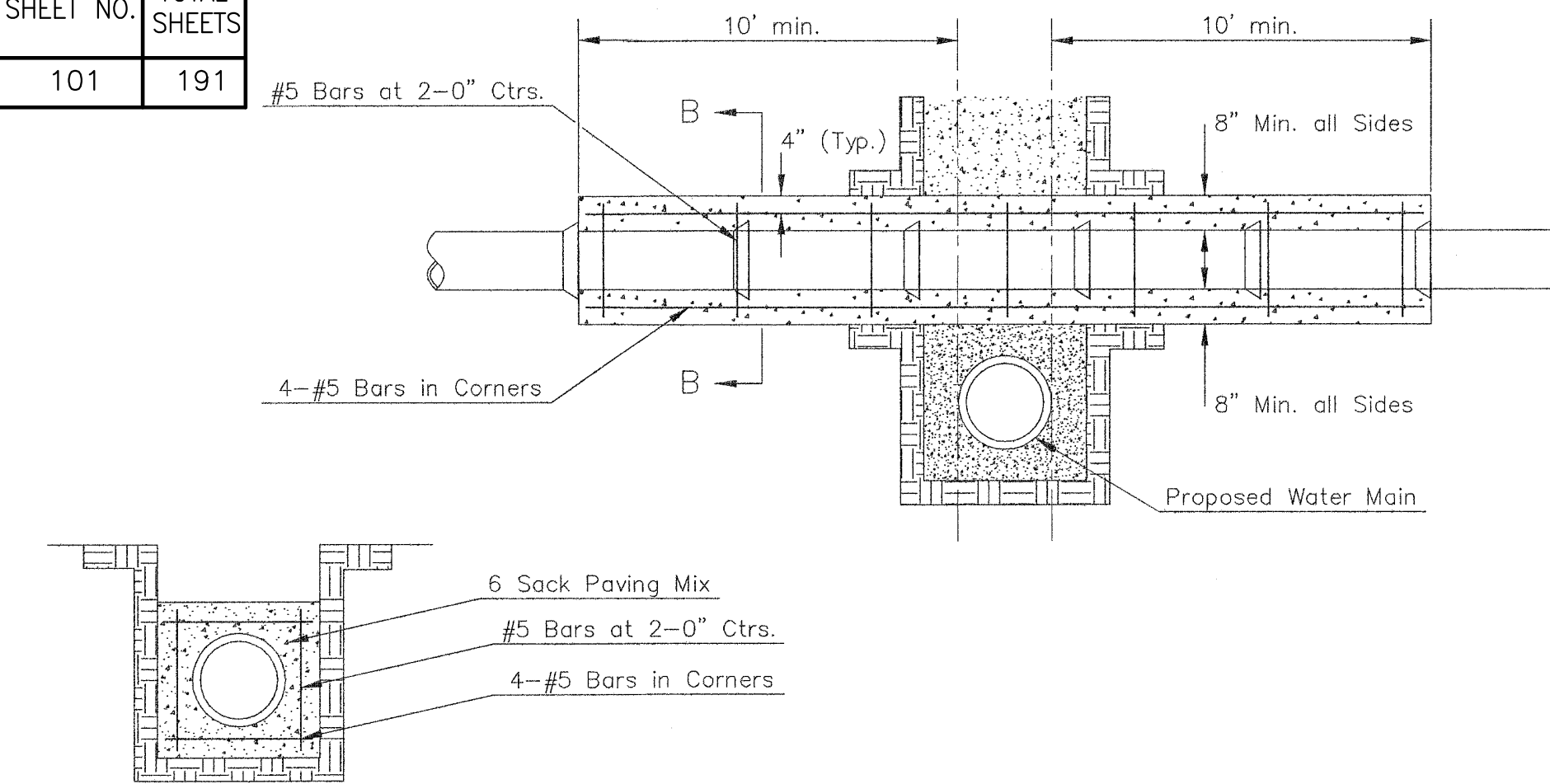


TOP VIEW



EXCAVATION FOR WET TAP

| STATE | PROJECT NO. | YEAR | SHEET NO. | TOTAL SHEETS |
|--------|--------------|------|-----------|--------------|
| KANSAS | 87 N-0597-01 | 2016 | 101 | 191 |

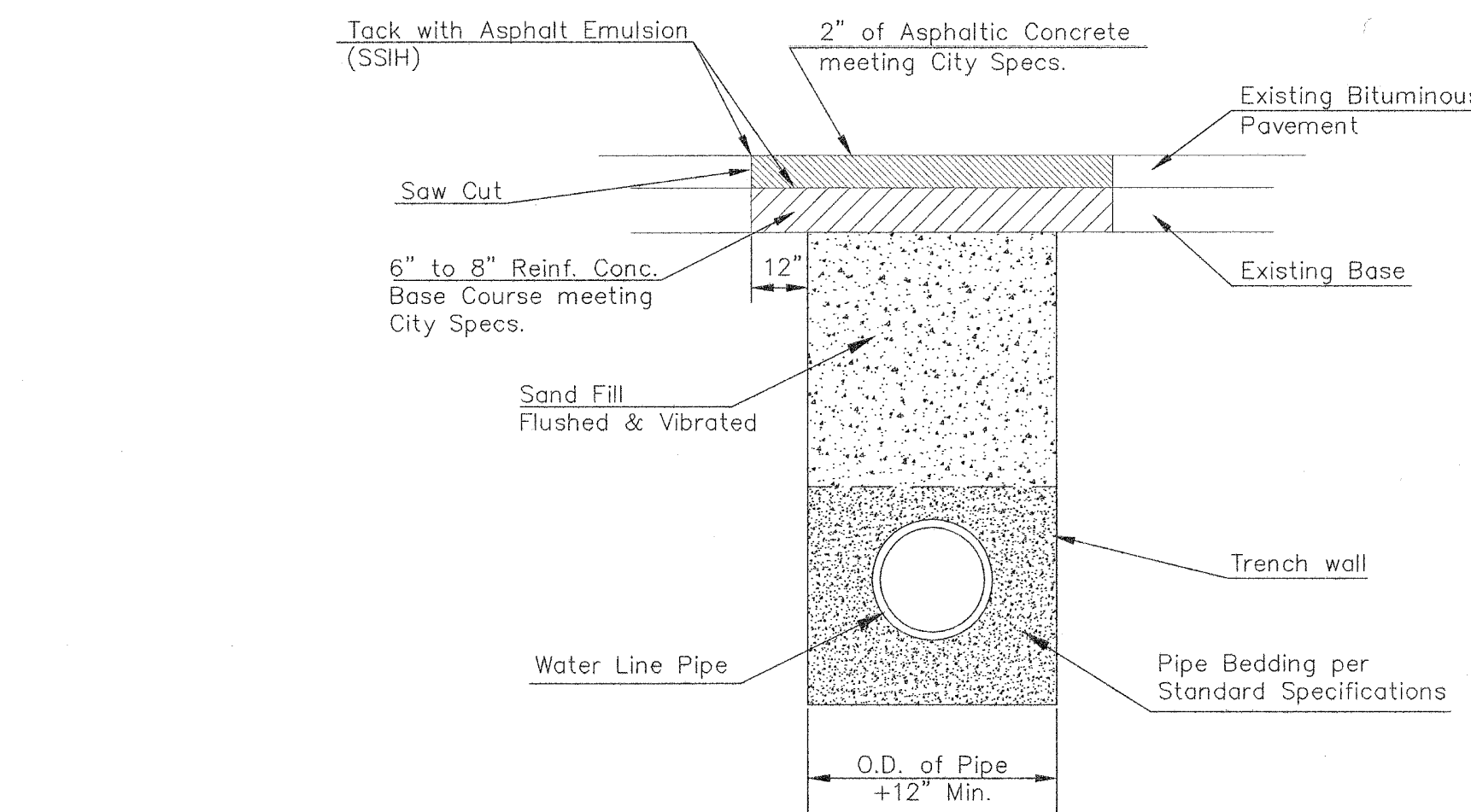


SECTION B-B

Note: Encasement to begin and end at a Bell on Sanitary Sewer Pipe.

REINFORCED CONCRETE ENCASEMENT
OF SANITARY SEWER

Note: When shoring is required it is to be per The City of Wichita Standard Specifications.



PAVEMENT REPLACEMENT & TRENCH COMPACTION UNDER
EXISTING AND PROPOSED CITY ROADS

REVISED: JULY 2015



CITY OF WICHITA
PUBLIC WORKS & UTILITIES
ENGINEERING DIVISION

| MISCELLANEOUS WATER DETAILS | | |
|------------------------------------------------------------------------------------------------------------------------------|----------------------|---------------------|
| CITY ENGINEER GARY JANZEN, P.E. | | |
| PROJECT NUMBER 472-84303 | OCA NUMBER 707048 | DATE DATE |
| CITY ENGINEER'S OFFICE CITY HALL - SEVENTH FLOOR 435 NORTH MAIN STREET WICHITA, KANSAS 67202-1620 (316) 268-4501 | | SHEET 101 OF 191 |