

SOUTHERN RIDGE 3RD ADDITION WICHITA, SEDGWICK COUNTY, KANSAS

State of Kansas) SS We, Baughman Company, P.A., Surveyors in
Sedgwick County) and state do hereby certify that we have surveyed and
aforsaid county and state do hereby certify that we have surveyed and
platted "SOUTHERN RIDGE 3RD ADDITION", Wichita, Sedgwick County,
Kansas and that the accompanying plat is a true and correct exhibit of
the property surveyed, described as the NE1/4 of Section 6, Twp. 28-S,
R-1-W of the 6th P.M., Sedgwick County, Kansas, EXCEPT a tract
described as follows: Beginning at the NE corner of said section; thence
south, a distance of 94.3 feet; thence N89°43'49"W, a distance of 4.75
feet; thence north, a distance of 94.3 feet; S89°43'49"E, a distance of
4.75 feet to the point of beginning, and EXCEPT that part platted as
Southern Ridge Addition, Wichita, Sedgwick County, Kansas, and EXCEPT
that part platted as Southern Ridge 2nd Addition, Wichita, Sedgwick
County, Kansas, all being subject to road rights-of-way of record.

Existing public easements and dedications
being vacated by virtue of K.S.A. 12-512(b).
Baughman Company, P.A.

We, the undersigned holders of a mortgage on the
above described property, do hereby consent to this plat of "SOUTHERN
RIDGE 3RD ADDITION", Wichita, Sedgwick County, Kansas.

Stillwater National Bank and Trust Company
Kathleen Laubhan AUSA
KATHLEEN LAUBHAN (1996)

State of Kansas) SS The foregoing instrument acknowledged be-
fore me, this 9th day of February, 2005, by *Kathleen Laubhan*
AUSA of Stillwater National Bank and Trust Company, on
behalf of the bank.

Katherine G. Sanneman, Notary Public
My App't. Exp. 9/14/06
KATHERINE G. SANNEMAN
Notary Public - State of Kansas
My App't. Expires March 14, 2008

Reviewed in accordance with K.S.A. 58-2005
on this 17th day of February, 2005.

Tricia L. Robella
Tricia L. Robella, L.S. #1246
Deputy County Surveyor
Sedgwick County, Kansas

Know all men by these presents that we,
the undersigned, have caused the land in the surveyors certificate to be
platted into Lots, Blocks, Streets and Reserves to be known as "SOUTHERN
RIDGE 3RD ADDITION", Wichita, Sedgwick County, Kansas. The utility
easements are hereby granted as indicated for the construction and
maintenance of all public utilities. The drainage and utility easements are
hereby granted as indicated for drainage purposes and for the
construction and maintenance of all public utilities. The drainage
easements are hereby granted as indicated for drainage purposes. The
wall easements are hereby granted as indicated for the construction and
maintenance of a private screening wall and utility main lines and service
lines shall be allowed to cross this easement. The streets are hereby
dedicated to and for the use of the public. Reserve "A" is hereby
reserved for open space, entry monuments, landscaping, berms, drainage
purposes, and utilities. Reserve "B" is hereby reserved for open space,
landscaping, berms, sidewalks, lakes, drainage purposes, and utilities as
confined to easement. Reserve "C" is hereby reserved for landscaping,
open space, sidewalks, walking paths, berms, drainage purposes, and
utilities as confined to easements. Any utilities installed in Reserves "A"
shall be installed below finished grade, and no utilities or related
appearances shall be allowed to be installed above finished grade.
Reserves "A", "B", and "C" shall be owned and maintained by the
homeowners association for the addition. Access controls shall be as
depicted on the face of the plat and are hereby granted to the City of
Wichita, Kansas. The Minimum Building Pad Elevations for the lowest
opening to the structures shall be as indicated on the face of the plat.

Maize Road, L.L.C.
Jay W. Russell
Managing Member

State of Kansas) SS The foregoing in-
strument acknowledged before
me, this 8th day of FEBRUARY,
2005, by *Jay W. Russell*,
Member of Maize Road, L.L.C.,
Notary Public

This plat of "SOUTHERN RIDGE 3RD
ADDITION", Wichita, Sedgwick County, Kansas has been submitted to and
approved by the Wichita-Sedgwick County Metropolitan Area Planning
Commission, Wichita, Kansas.
Dated this 21st day of December, 2004.
Wichita-Sedgwick County Metropolitan Area Planning Commission



Morris K. Dunlap, Chair
John E. Schlegel, Secretary

This plat approved and all dedications
shown hereon accepted by the City Council of the City of Wichita,
Kansas, this 25th day of March, 2005.

Carlos Mayans, Mayor
Karen Sublett, City Clerk

Entered on transfer record this 19th day
of April, 2005.
Don Brace, County Clerk



State of Kansas) SS This is to certify that this plat has been
filed for record in the office of the Register of Deeds, this 19th day
of April, 2005 at 10:22 o'clock A.M.; and is duly recorded.

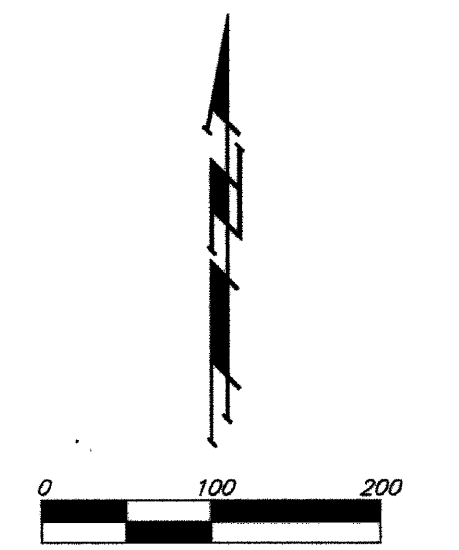
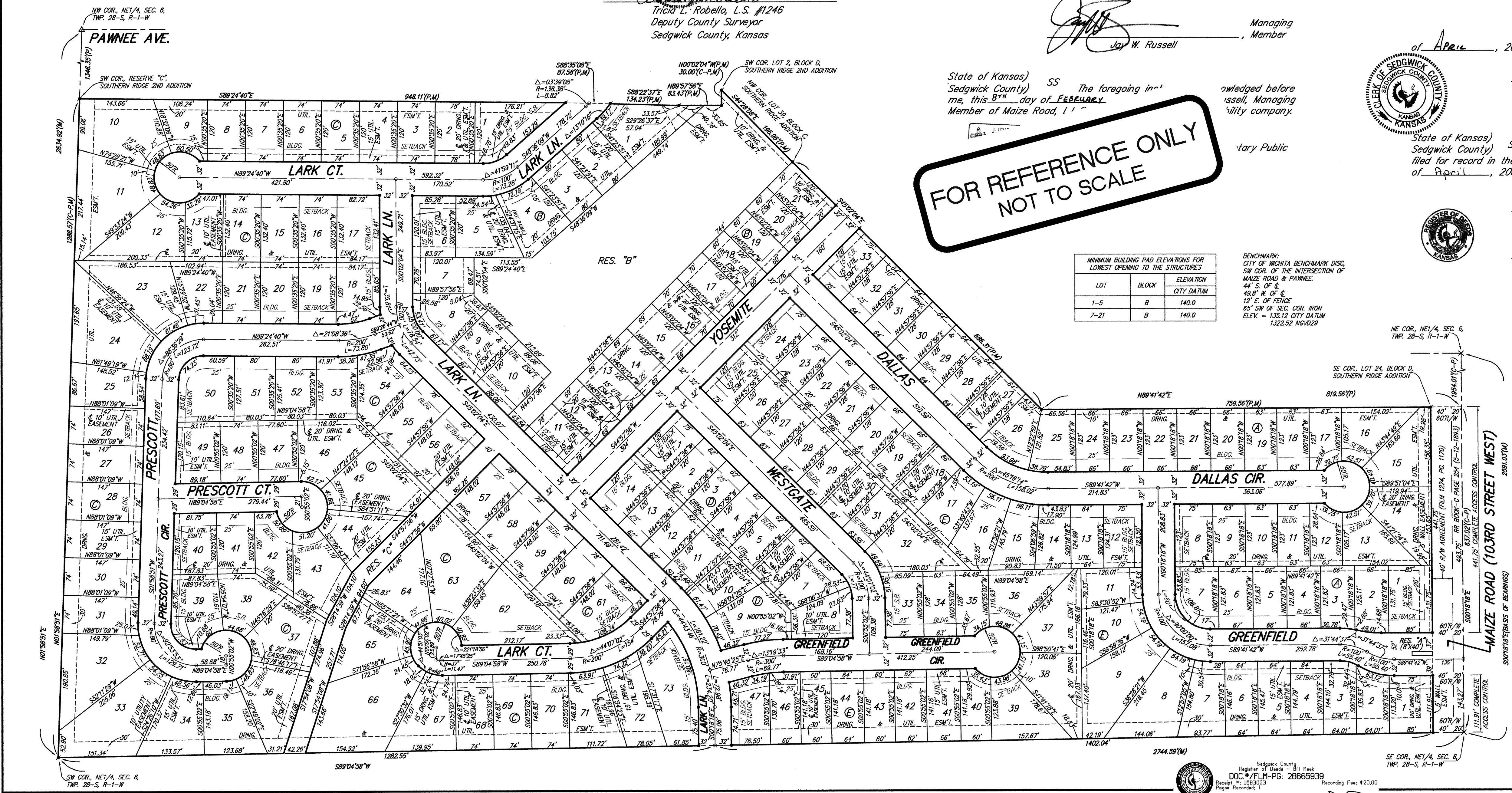
Bill Meek, Register of Deeds
Linda Kizzire, Deputy



FOR REFERENCE ONLY
NOT TO SCALE

LOT	BLOCK	ELEVATION
1-5	B	140.0
7-21	B	140.0

BENCHMARK:
CITY OF WICHITA BENCHMARK DISC
SW COR. OF THE INTERSECTION OF
MAIZE ROAD & PAWNEE
44' S. OF C.
49.8' W. OF C.
12' E. OF FENCE
65' SW OF SEC. COR. IRON
ELEV. = 133.12 CITY DATUM
1322.52 NGVD29



- = #4 REBAR W/ "BAUGHMAN" CAP (SET)
 - △ = STONE (FOUND)
 - × = #4 REBAR (FOUND)
 - = #4 REBAR W/ "BAUGHMAN" CAP (FOUND)
- (M) = MEASURED
(P) = PLATTED
(C-P) = CALCULATED PER
PLATTED INFO.

NOTE: ALL LOTS W/ SHALL HAVE

NOTE: A MASTER GRD SUBDIVISION A ALL DRAINAGE AT ESTABLISH CITY ENGINEER IMPEDE THE PL

Baughman SOUTHERN RIDGE 3RD ADD. PH. 5A
Copy of PLAT
STREET IMPROVEMENTS

Baughman Company, P.A. 315 Ellis St. Wichita, KS 67211 P 316-262-2721 F 316-262-0149
ENGINEERING | SURVEYING | PLANNING | LANDSCAPE ARCHITECTURE

PROJECT NUMBER 472-84192
DESIGN DMV
DRAWN TMS

REVISIONS:
APPROVED DATE 09/16

SCALE Noted
SHEET 23 OF 23

E:\Projects\Southern Ridge 3rd Phase 5A\STR 06-02-E533.dwg