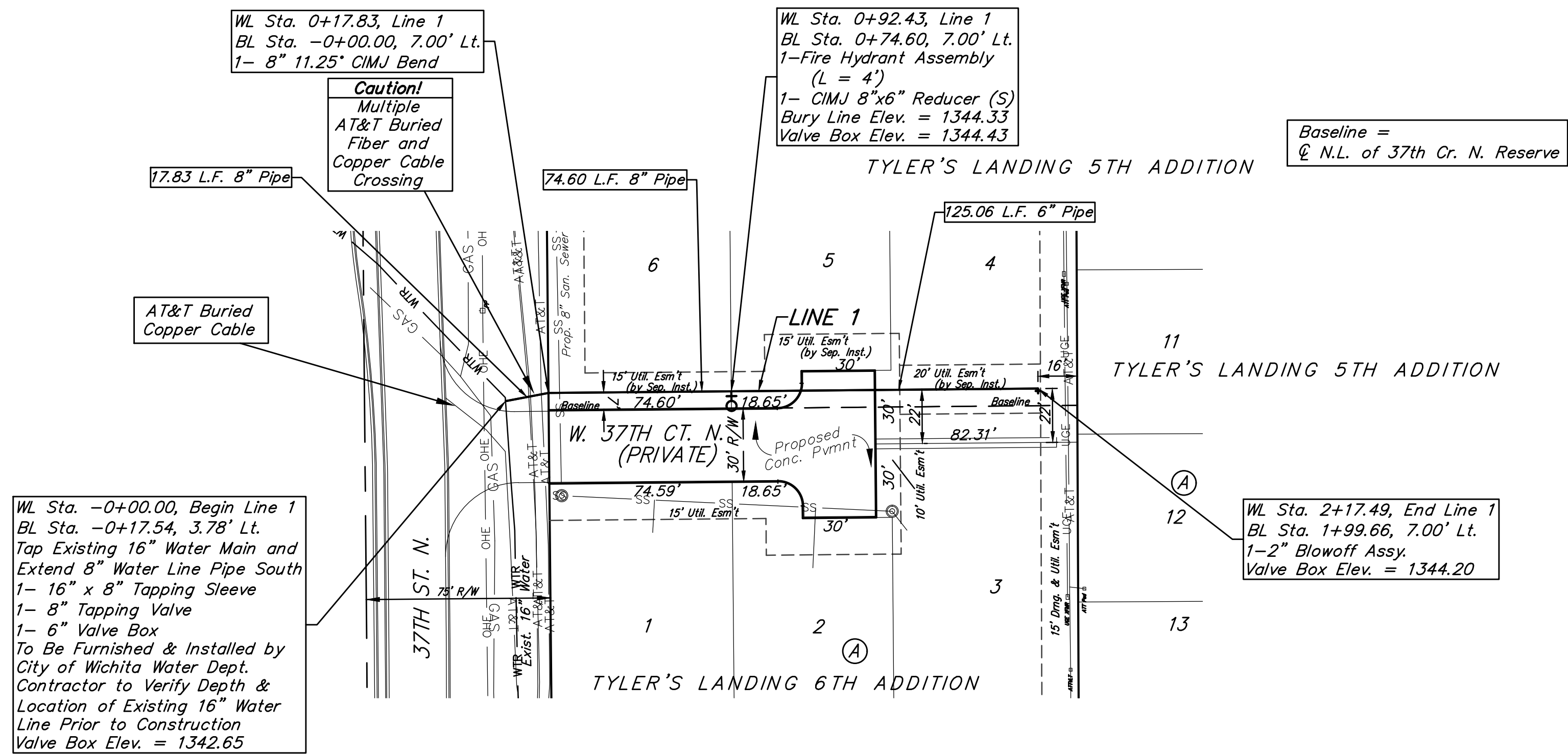


**BENCHMARKS:**

BM#1: "□" Cut with Cross in Curb Return at Southeast Corner of Intersection of 37th St. N. and Tyler, Approximately 47' South and 49.5' East of the Center of Intersection Elev. = 1343.53 NAVD88

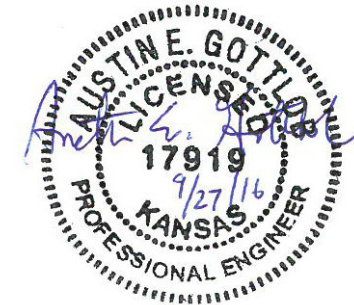
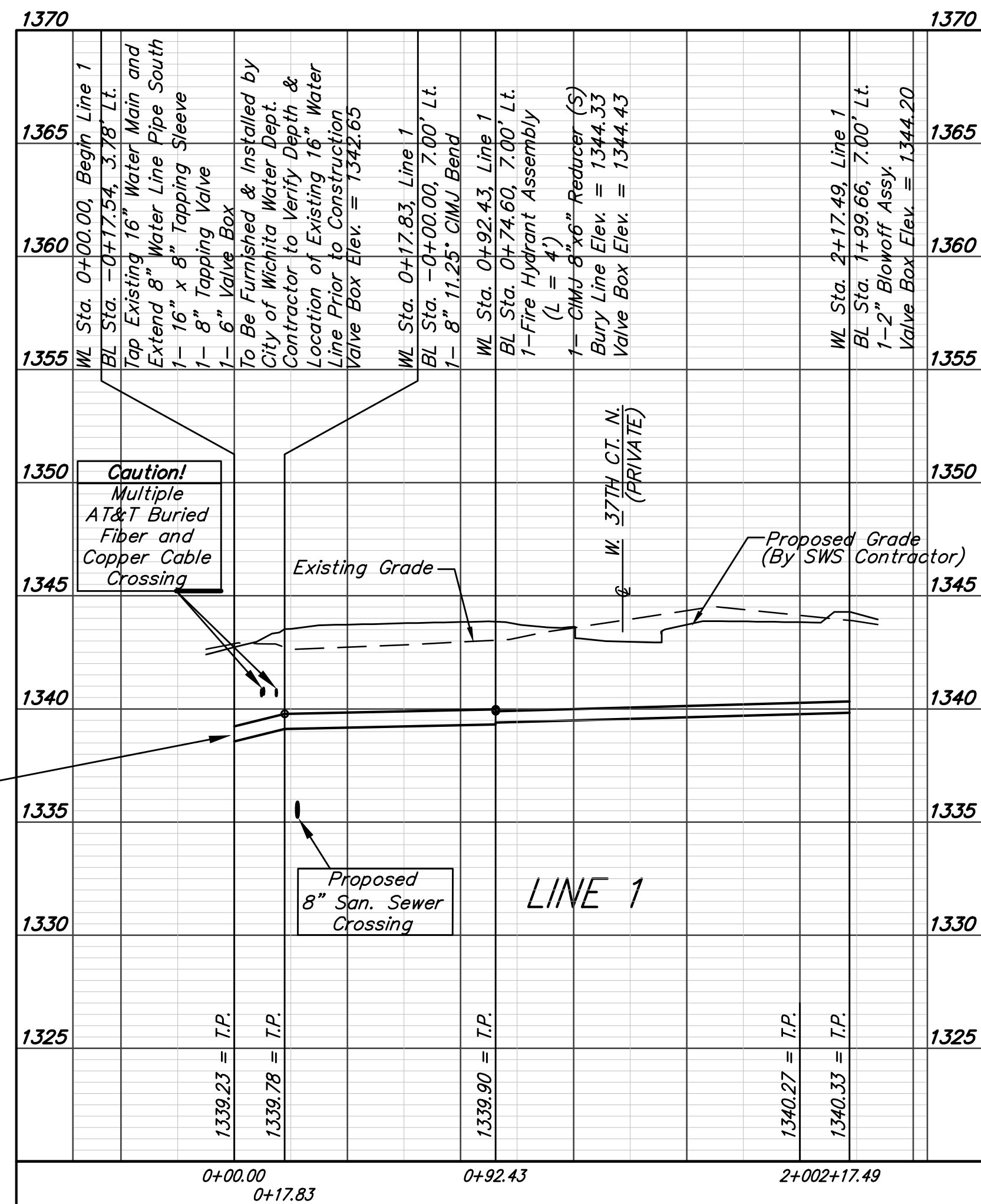
BM#2: "□" Cut with Cross in South Line of 37th St. N. Approximately 41.5' South and 1,026' East of the Center of the Intersection of 37th St. N. and Tyler. Elev. = 1337.39 NAVD88



| FIRE HYDRANTS REQUIRED |         |                     |                       |                             |                                |
|------------------------|---------|---------------------|-----------------------|-----------------------------|--------------------------------|
| LINE                   | STATION | BURY LINE ELEVATION | TOP OF PIPE ELEVATION | FIRE HYDRANT BURY REQUIRED* | VALVE STEM EXT. REQUIRED (ft)* |
| 1                      | 0+92.43 | 1344.33             | 1339.98               | 5.0'                        | -                              |

Tap Location may need to be adjusted to provide adequate separation from existing fittings. Additional fittings required shall be considered incidental to the "8" Valve" Bid Item.

Contractor to verify depth and location of existing 16" water line prior to construction.



|                                                                                                                                                                     |                              |              |
|---------------------------------------------------------------------------------------------------------------------------------------------------------------------|------------------------------|--------------|
|                                                                                                                                                                     | Tyler's Landing 6th Addition |              |
|                                                                                                                                                                     | <b>LINE 1</b>                |              |
| Water Distribution System                                                                                                                                           |                              |              |
| <small>Baughman Company, P.A. 315 Ellis St. Wichita, KS 67211 P 316-262-7271 F 316-262-0149<br/>ENGINEERING   SURVEYING   PLANNING   LANDSCAPE ARCHITECTURE</small> |                              |              |
| PROJECT NUMBER<br>448-90750                                                                                                                                         | DESIGN<br>AEG                | DRAWN<br>DJL |
| REVISIONS:                                                                                                                                                          | APPROVED                     | DATE<br>8/16 |
|                                                                                                                                                                     | SCALE<br>Noted               | SHEET        |
| <b>4 OF 12</b>                                                                                                                                                      |                              |              |