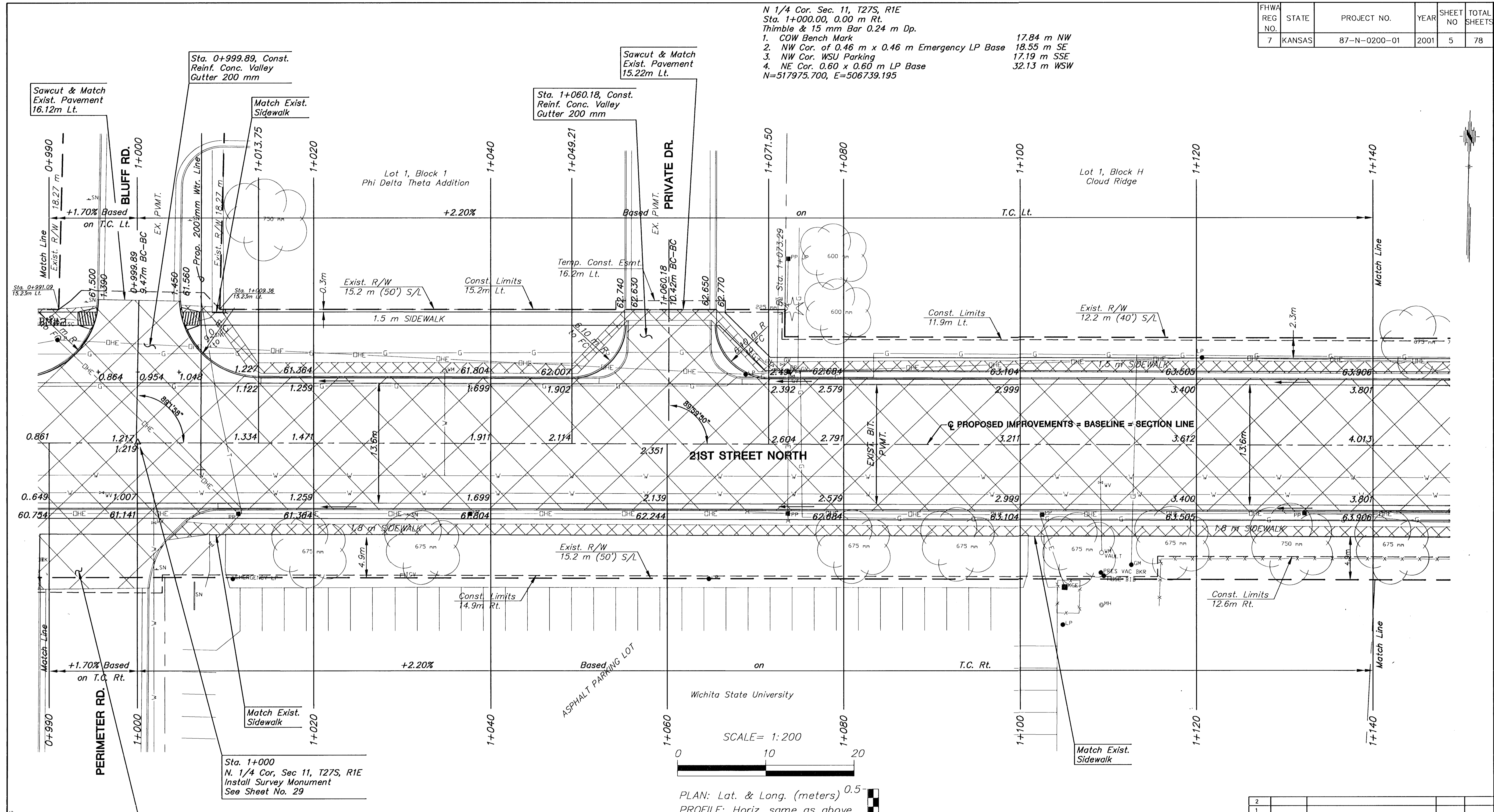


FHWA REG. NO.	STATE	PROJECT NO.	YEAR	SHEET NO.	TOTAL SHEETS
7	KANSAS	87-N-0200-01	2001	5	78

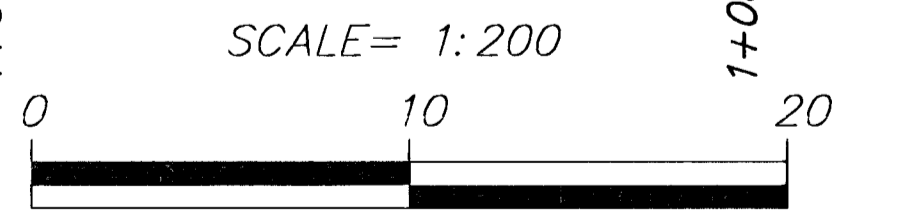
N 1/4 Cor. Sec. 11, T27S, R1E
 Sta. 1+000.00, 0.00 m Rt.
 Thimble & 15 mm Bar 0.24 m Dp.
 1. COW Bench Mark 17.84 m NW
 2. NW Cor. of 0.46 m x 0.46 m Emergency LP Base 18.55 m SE
 3. NW Cor. WSU Parking 17.19 m SSE
 4. NE Cor. 0.60 x 0.60 m LP Base 32.13 m WSW
 N=517975.700, E=506739.195

DATE	BY

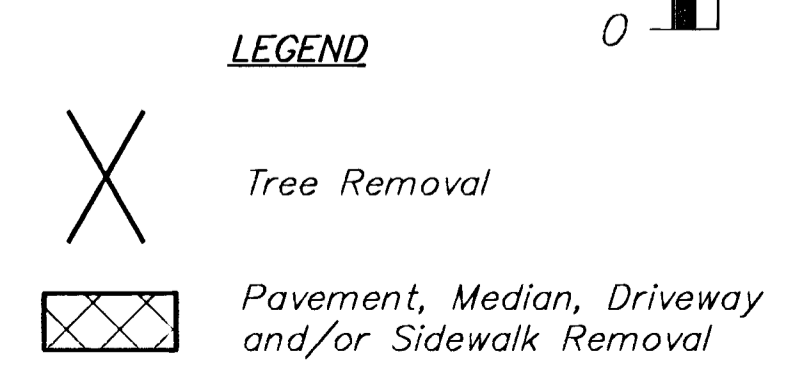


Exsit. Perimeter Rd. to be Closed. Remove Exsit. Pavement South to end of returns. WSU to Install Permanent Barricades W/End of Road Markers. Contractor to Coordinate Road Closure with Paving Improvements on WSU Campus. See General Note.

STATION	OFFSET BL (m)	DESCRIPTION	EXIST. ELEV.	PROP. ELEV.	REMARKS
0+996.0	5.6 Rt.	WV	61.07	60.788	
1+001.9	9.1 Rt.	WV	60.93	-	Adj. in Field
1+034.8	8.0 Lt.	WM	61.97	61.699	
1+109.1	4.3 Rt.	WV	63.25	63.260	



PLAN: Lat. & Long. (meters)
 PROFILE: Horiz. same as above, Vert. _____



- Utility Owners**
- T - Southwestern Bell Telephone Co. 1-800-734-7590
 - G - Kansas Gas Service (316)-383-8600
 - SS & W - City of Wichita Water & Sewer Dept. (316)-268-4940
 - OHE - KG&E (316)-383-8600
 - SWS - City of Wichita Stormwater Utility (316)-268-4071
 - TV - Cox Communications (316)-263-2061

NO.	DATE	REVISIONS	BY	APP'D

KANSAS DEPARTMENT OF TRANSPORTATION

21ST STREET NORTH
 STA. 0+990 TO STA. 1+140

PROJ. NO. 87-N-0200-01

MKEC ENGINEERING CONSULTANTS, INC.
 WICHITA, KANSAS

DESIGNED BY: DFL CHECKED BY: GJA
 DRAWN BY: GJR DATE: JUNE 2001 SHEET 5 OF 78