

FHWA REG. NO.	STATE	PROJECT NO.	YEAR	SHEET NUMBER	TOTAL SHEETS
7	KANSAS	87 N-0194-01	2001	6	43

STA. 9+863.781 8.436 m RT.  
SET PK NAIL  
23.012 m W. OF W. CURB SHELTON  
2.164 m S. OF S. CURB 21ST  
N=296.064 E=1493.942

STA 0+00 LINE 1  
B.L. STA. 9+878.080 7.003 LT.  
1-COW TYPE 1 CURB INLET  
OPENING=3.048 m W=2.234  
TOP = 37.077  
FL (W) = 35.022  
FL (S) = 35.022

STA. 0+006.359 LINE 1C  
B.L. STA. 9+920.00 LT.  
2-COW DBLE. TYPE 2 CURB INLETS  
TOP = 36.868  
FL (S) = 35.138

STA. 0+008.364 LINE 1E  
B.L. STA. 9+981.838 LT.  
1-COW DBLE. TYPE 2 CURB INLET  
TOP = 36.746  
FL (S) = 35.278

STA 0+005.323 LINE 1  
B.L. STA. 9+878.080 2.438 m LT.  
1-2.428 m X 2.428 m RCMH  
TOP=37.079  
FL (N) = 35.035  
FL (E) = 35.035  
FL (S) = 35.035

STA 0+007.927 LINE 1A  
B.L. STA. 9+878.080 RT.  
1-COW DBLE. TYPE 2 CURB INLET  
TOP = 37.053  
FL (N) = 35.065

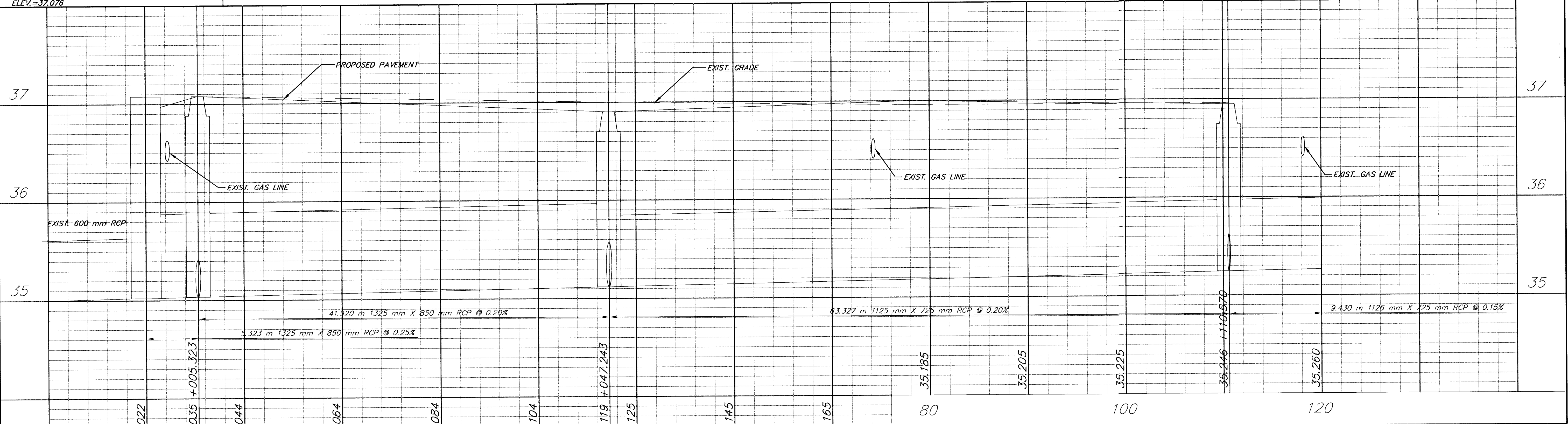
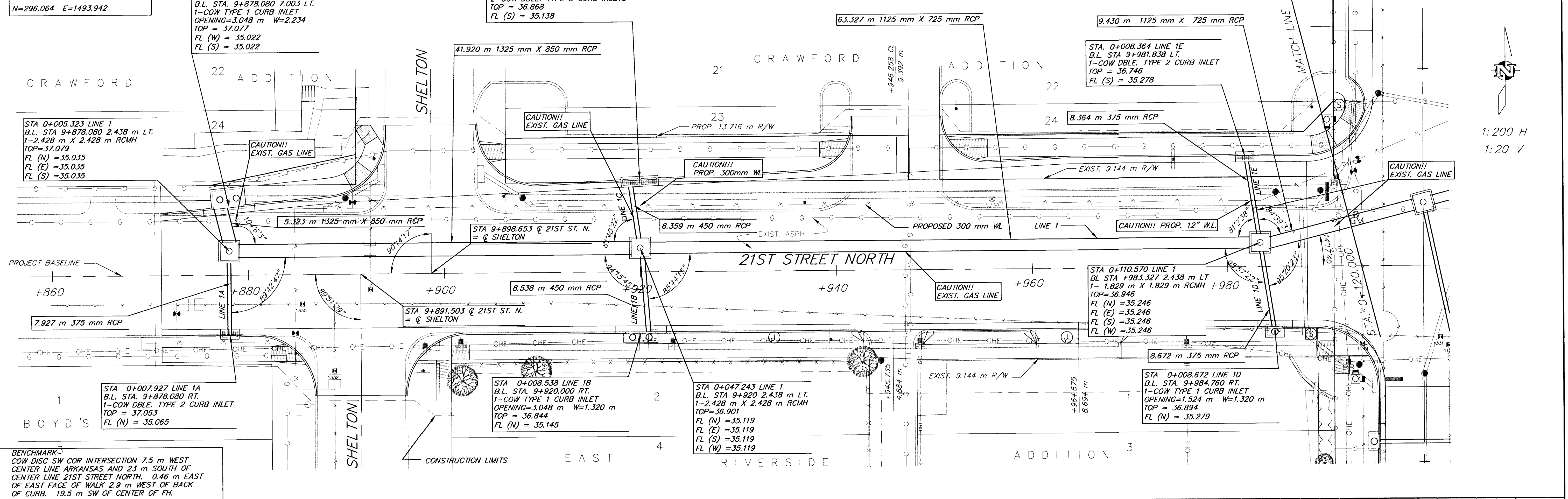
STA 0+008.538 LINE 1B  
B.L. STA. 9+920.000 RT.  
1-COW TYPE 1 CURB INLET  
OPENING=3.048 m W=1.320 m  
TOP = 36.844  
FL (N) = 35.145

STA 0+047.243 LINE 1  
B.L. STA. 9+920.243 m LT.  
1-2.428 m X 2.428 m RCMH  
TOP=36.901  
FL (N) = 35.119  
FL (E) = 35.119  
FL (S) = 35.119  
FL (W) = 35.119

STA 0+110.570 LINE 1  
B.L. STA. 9+833.327 2.438 m LT  
1-1.829 m X 1.829 m RCMH +980  
TOP=36.946  
FL (N) = 35.246  
FL (E) = 35.246  
FL (S) = 35.246  
FL (W) = 35.246

STA 0+008.672 LINE 1D  
B.L. STA. 9+984.760 RT.  
1-COW TYPE 1 CURB INLET  
OPENING=1.524 m W=1.320 m  
TOP = 36.894  
FL (N) = 35.279

BENCHMARK  
COW DISC SW COR INTERSECTION 7.5 m WEST  
CENTER LINE ARKANSAS AND 23 m SOUTH OF  
CENTER LINE 21ST STREET NORTH. 0.46 m EAST  
OF EAST FACE OF WALK 2.9 m WEST OF BACK  
OF CURB. 19.5 m SW OF CENTER OF FH.  
ELEV.=37.078



1:200 H  
1:20 V

PROJECT NUMBER <b>472-82783</b>		AM NO. 99147	21ST AND ARKANSAS <b>SWS LINE 1, 1A-1C</b> CITY OF WICHITA		SHEET OF
DESIGN RR	DRAWN RR	FILE swsp01	DATE	SCALE 1:200	REVISION 01/10/01