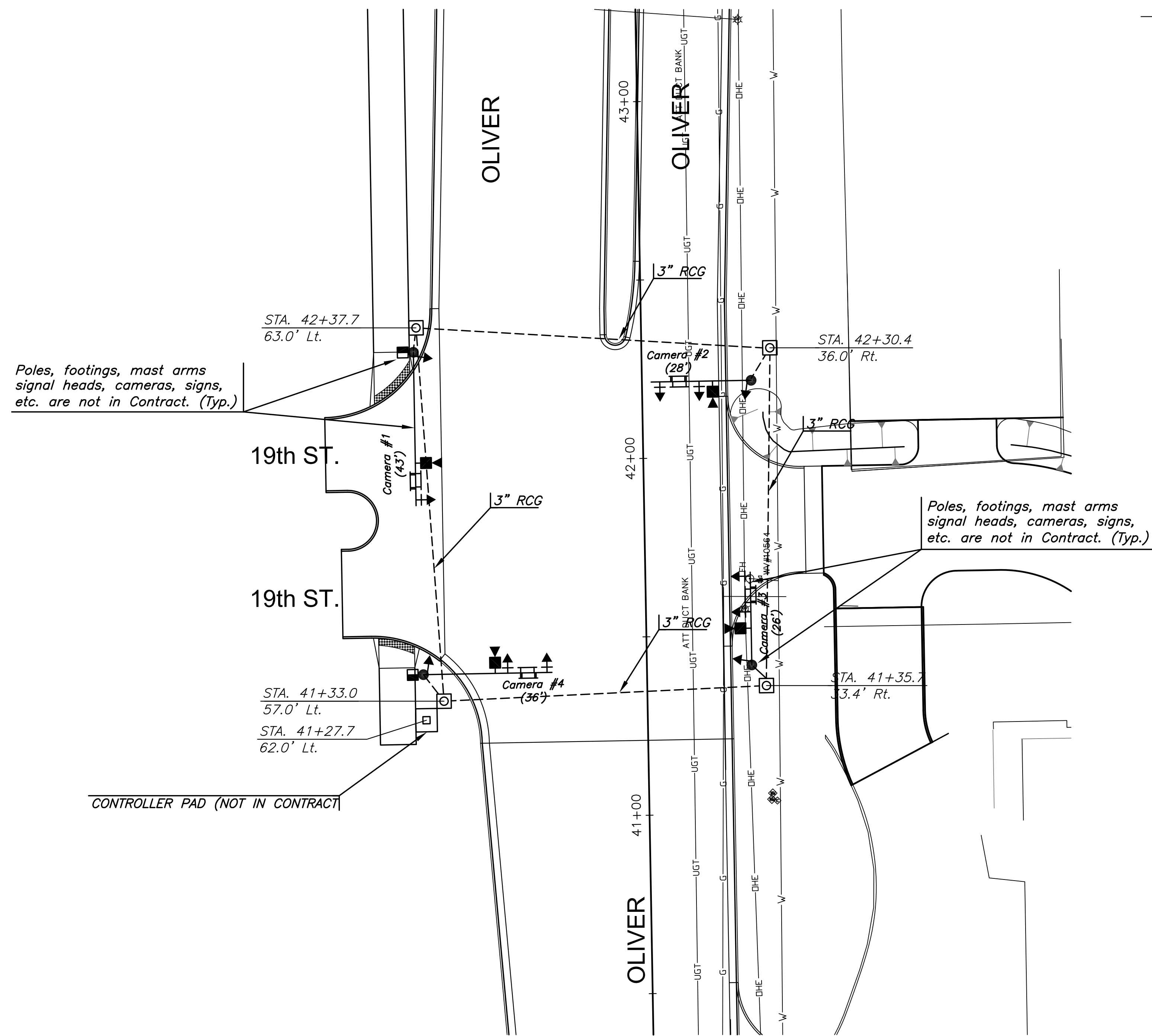


J:\PROJECTS\2016\19104078_COW_21ST & OLIVER_XXXXX CAD\SHOTS\05 CIVIL\TRAFFIC\19176-SC02.DWG
 PLOTTED: Thursday, September 22, 2016 @ 03:56PM

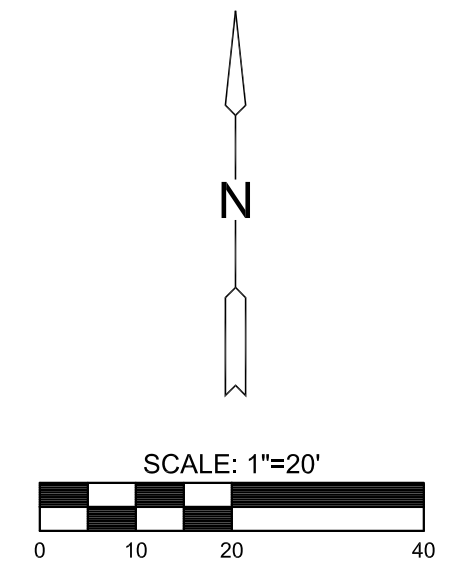
GENERAL NOTES

1. Conduit shall be jacked, bored or directional drilled under existing pavement and under new pavement that has been placed prior to conduit installation.
2. Placement of Service/Junction Boxes, Conduit Runs and Controller are typical and may be adjusted as directed by the Engineer to facilitate installation.
3. The Contractor shall contact utility companies which may be affected by the installation of Traffic Signalization prior to any construction.



LEGEND

	Steel Traffic Signal Pole (Joint use)
	Steel Traffic Signal Pole (Std. Pole)
	Aluminum Traffic Signal Pole (Pedestal)
	Traffic Signal Indication (Type A) w/Backplate
	Traffic Signal Indication (Type I) w/Backplate
	Mast Arm Suspended Traffic Signal
	Video Detection Camera
	Service Box
	Pedestrian Indication
	Pole Number
	Signal Number
	Vehicle Detection Zone
	Detector Number
	Rigid Galvanized Conduit (RGC)
	Overhead Street Name Sign
	Overhead Sign R10-12 (Lt. Turn Yield on Green)
	Wind Dampener
	Power Pole
	Meter Box and Power Disconnect
	Controller and Pad



RECAPITULATION OF TRAFFIC SIGNAL QUANTITIES		
BID ITEM	QUANTITY	UNIT
CONDUIT	390	L.F.
SERVICE BOXES	4	EACH



PROJECT TYPE
21ST & OLIVER INTERSECTION
 WICHITA, KANSAS

©2016
 MKEC Engineering
 All Rights Reserved
 www.mkec.com
 These drawings and their contents, including, but not limited to, all concepts, designs, & ideas are the exclusive property of MKEC Engineering (MKEC), and may not be used or reproduced in any way without the express consent of MKEC.

TRAFFIC SIGNAL PLAN - 19TH & OLIVER

PROJECT NO.	472-85213
DATE	SEPT. 2016
SCALE	1"=20'
DESIGNED	JRA
DRAWN	XXX
CHECKED	JRA

NO.	REVISION	DATE

SHEET NO.