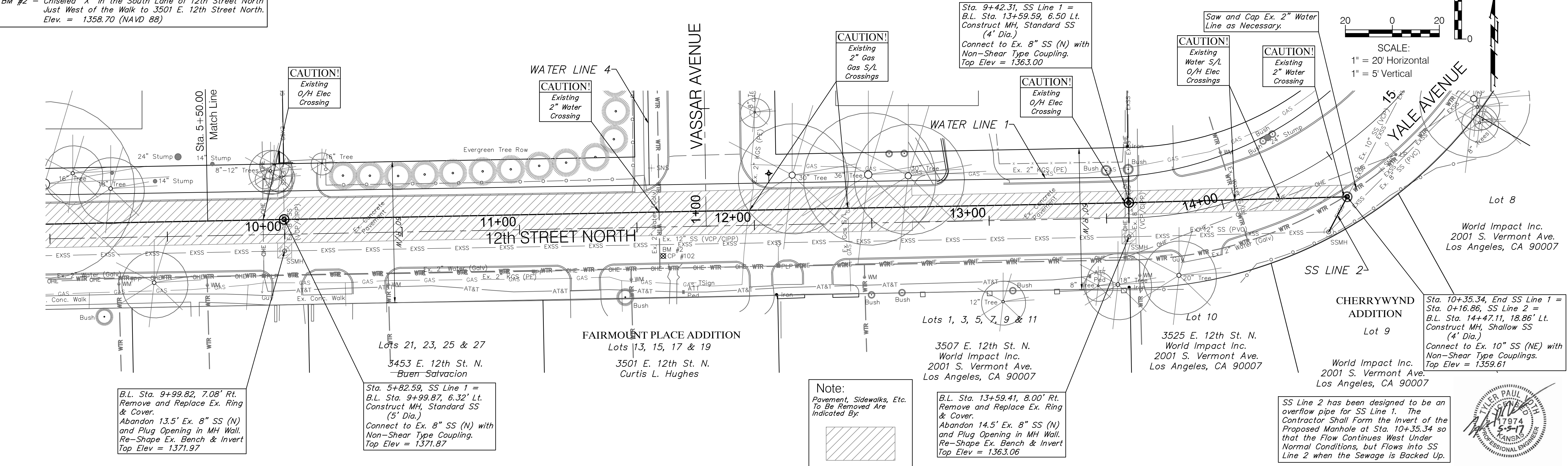



**BENCHMARK:**  
 BM #2 - Chiseled "X" in the South Lane of 12th Street North  
 Just West of the Walk to 3501 E. 12th Street North.  
 Elev. = 1358.70 (NAVD 88)



B.L. Sta. 9+99.82, 7.08' Rt.  
 Remove and Replace Ex. Ring & Cover.  
 Abandon 13.5' Ex. 8" SS (N)  
 and Plug Opening in MH Wall.  
 Re-Shape Ex. Bench & Invert  
 Top Elev = 1371.97

Sta. 5+82.59, SS Line 1 =  
 B.L. Sta. 9+99.87, 6.32' Lt.  
 Construct MH, Standard SS  
 (5' Dia.)  
 Connect to Ex. 8" SS (N) with  
 Non-Shear Type Coupling.  
 Top Elev = 1371.87

**Note:**  
 Pavement, Sidewalks, Etc.  
 To Be Removed Area  
 Indicated By:



B.L. Sta. 13+59.41, 8.00' Rt.  
 Remove and Replace Ex. Ring & Cover.  
 Abandon 14.5' Ex. 8" SS (N)  
 and Plug Opening in MH Wall.  
 Re-Shape Ex. Bench & Invert  
 Top Elev = 1363.06

SS Line 2 has been designed to be an  
 overflow pipe for SS Line 1. The  
 Contractor Shall Form the Invert of the  
 Proposed Manhole at Sta. 10+35.34 so  
 that the Flow Continues West Under  
 Normal Conditions, but Flows into SS  
 Line 2 when the Sewage is Backed Up.

