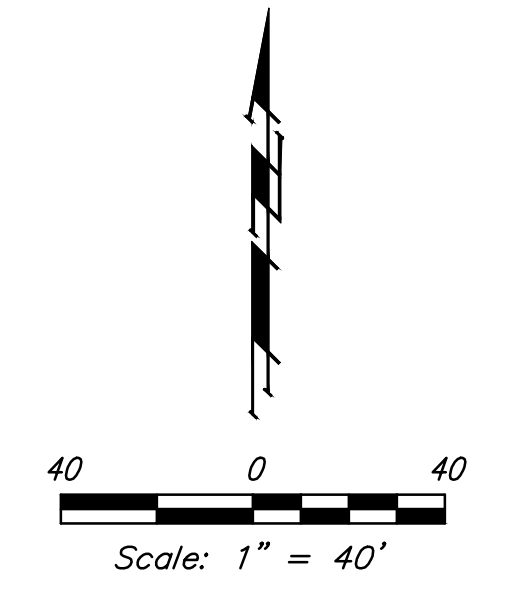
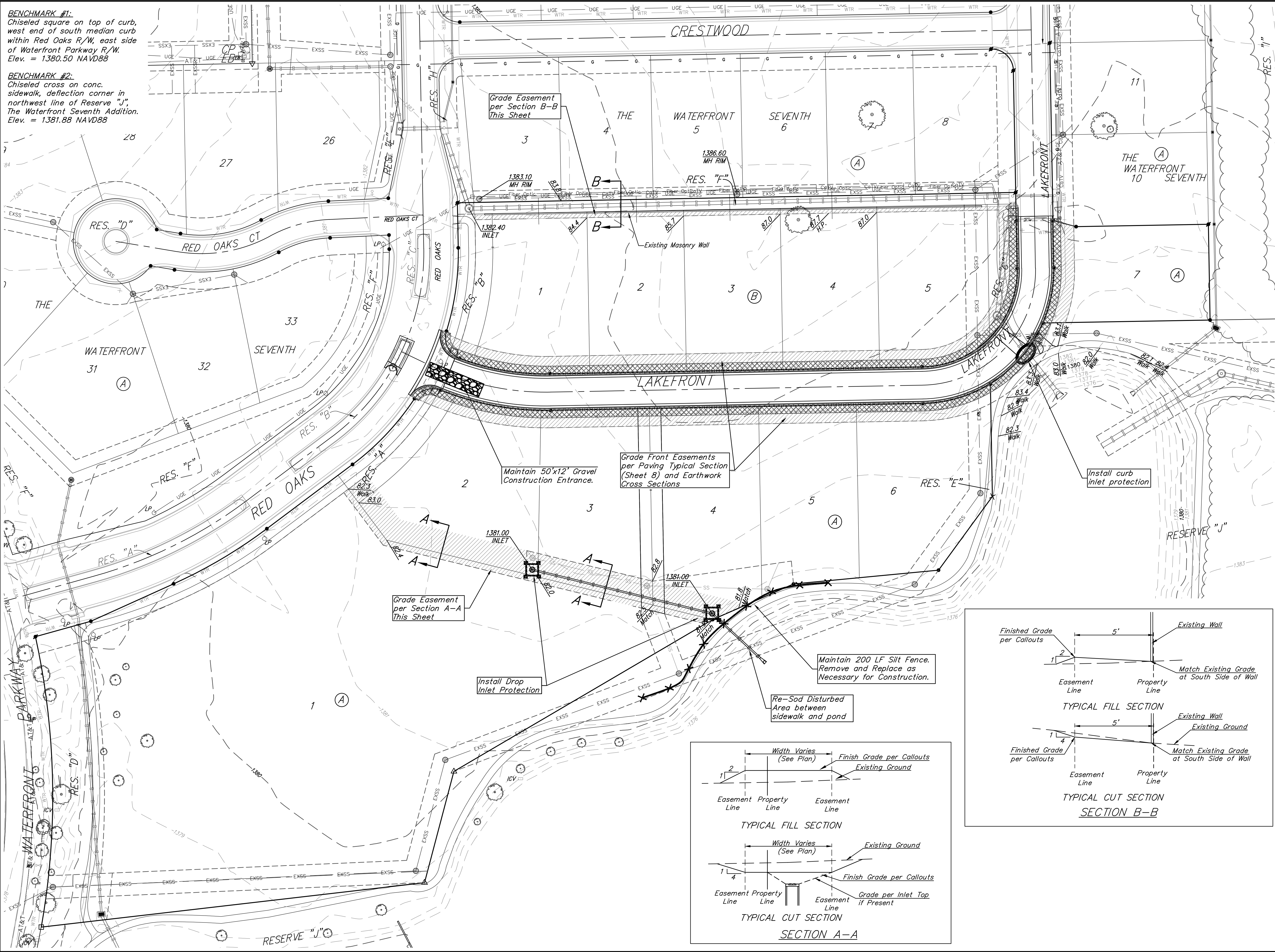


BENCHMARK #1:
Chiseled square on top of curb, west end of south median curb within Red Oaks R/W, east side of Waterfront Parkway R/W, east side of Waterfront Seventh Addition. Elev. = 1380.50 NAVD88

BENCHMARK #2:
Chiseled cross on conc. sidewalk, deflection corner in northwest line of Reserve "J". The Waterfront Seventh Addition. Elev. = 1381.88 NAVD88



Existing Ground ——— 1364 ———

EROSION CONTROL PLAN LEGEND

- DROP INLET PROTECTION
- CURB INLET PROTECTION
- SILT FENCING
- BACK OF CURB PROTECTION
- EROSION CONTROL MAT

= Easements To Be Graded

Approximate Easement Grading Quantities:
(For Information Only) C.Y.

Easements	Excavation	Fill
	107	76

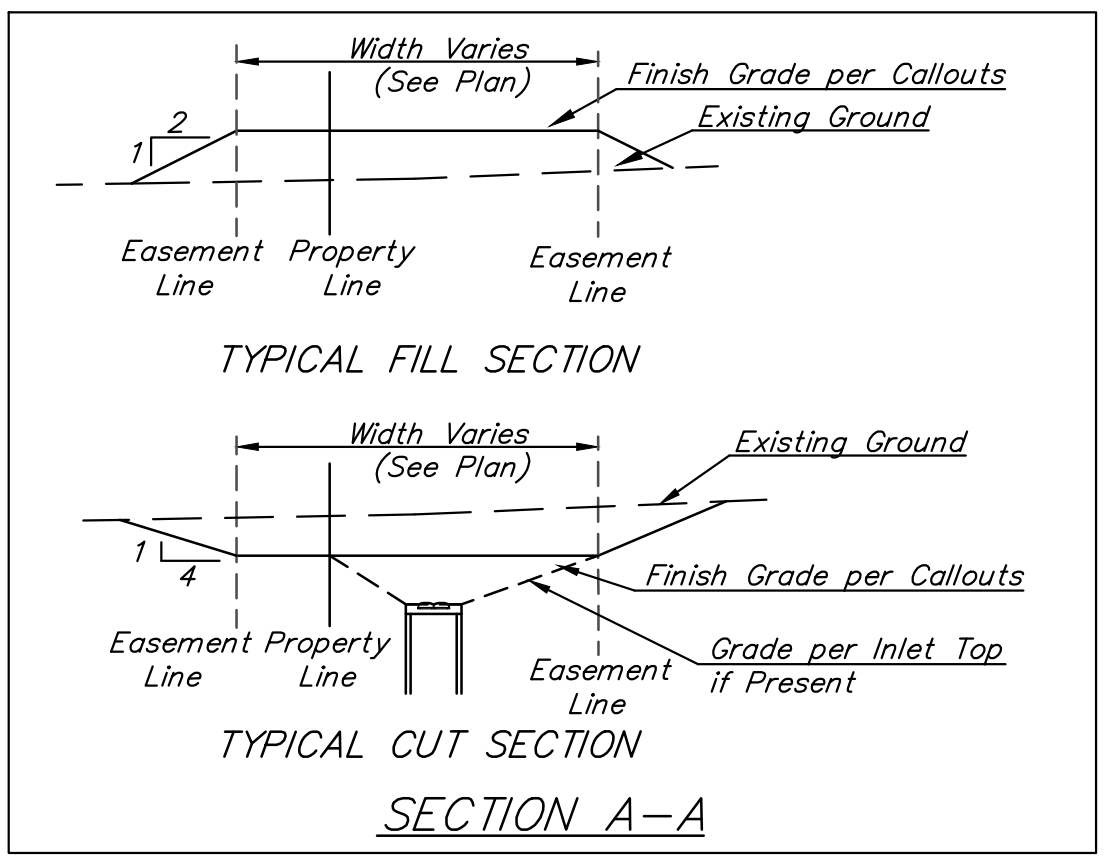
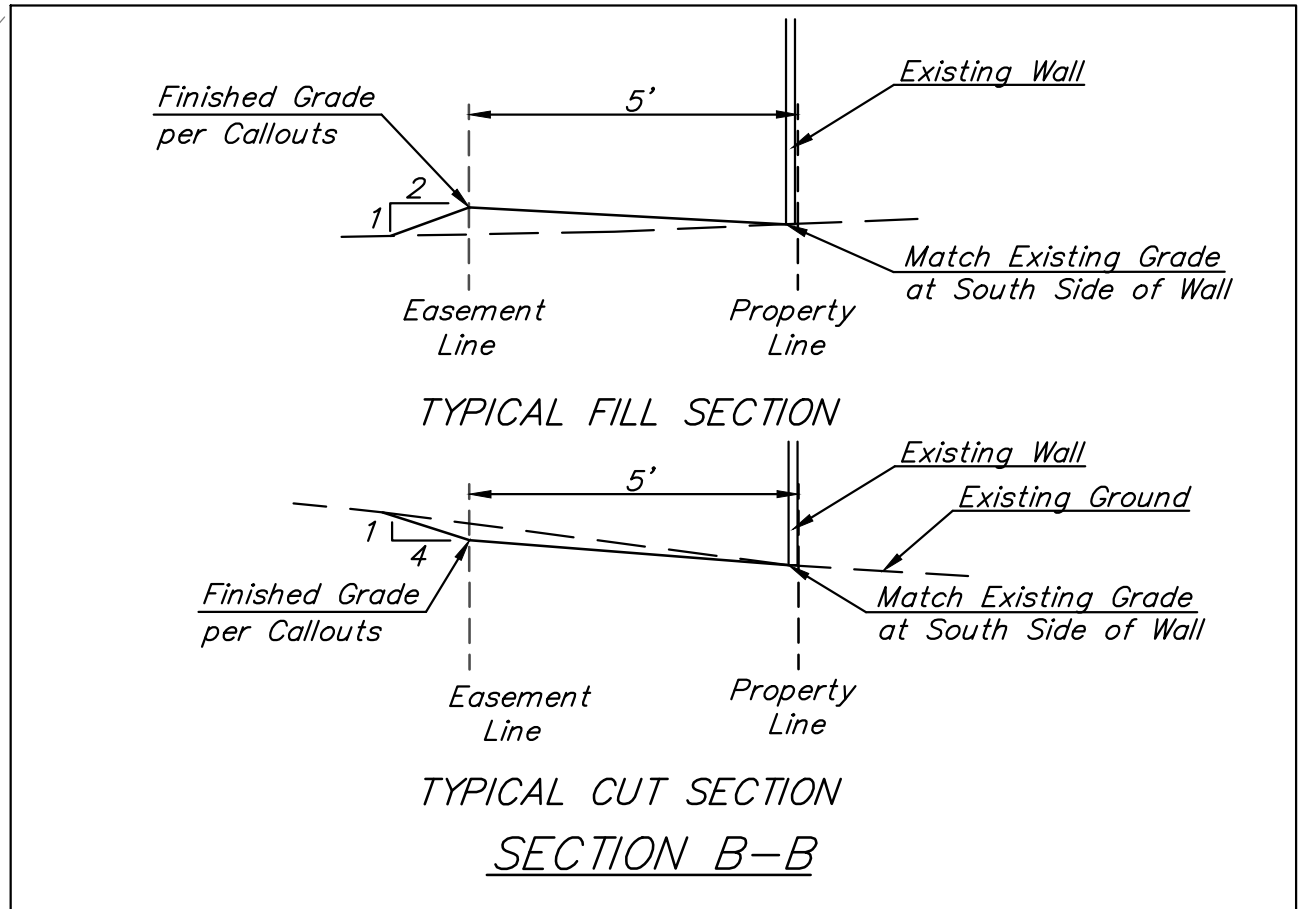
Front Easements are included in Street Earthwork Quantities. See Street Cross Sections.

The Contractor shall grade the easements as shown to the elevations given in the easement grading plan.

The Contractor shall 'straight' grade the easements between the elevations given. Where a callout designates 'Match', the Contractor will grade to the existing ground elevation.

Excess excavation from easement grading and from sanitary sewer construction shall be placed on the lots as indicated to the elevations shown.

All cost to be included in the Lump Sum bid item "Easement Grading"



EROSION CONTROL MEASURE	INSTALL	MAINTAIN
BACK OF CURB PROTECTION (LF)	1299	0
CONSTRUCTION ENTRANCE (EA)	0	1
CURB INLET BARRIER (EA)	1	0
DITCH CHECK (EA)	0	0
DROP INLET PROTECTION (EA)	3	0
SILT FENCE (LF)	0	200
EROSION CONTROL MAT (SY)	133	0
MAINTAIN EROSION CONTROL BMP'S (LS)	0	1

* ALL EXISTING BMP'S INCLUDING CONSTRUCTION ENTRANCE, SEDIMENT BARRIERS, SILT FENCE, CUT-OFF TRENCH, AND EROSION CONTROL MAT SHALL BE MAINTAINED AND REPAIRED IF NECESSARY.

Baughman The Waterfront 9th Addition
LAKEFRONT
Water Distribution System

Baughman Company, P.A. 315 Ellis St. Wichita, KS 67211 P 316-262-7271 F 316-262-0149
ENGINEERING | SURVEYING | PLANNING | LANDSCAPE ARCHITECTURE

PROJECT NUMBER 472-85377	DESIGN AEG	DRAWN JAK
REVISIONS:	APPROVED	DATE 5/05/17
	SCALE Noted	SHEET 11 OF 22

E:\Projects\Waterfront Ninth Addition_16-09-P225\Engineering\STR_16-12-E635\STR PLANS.dwg