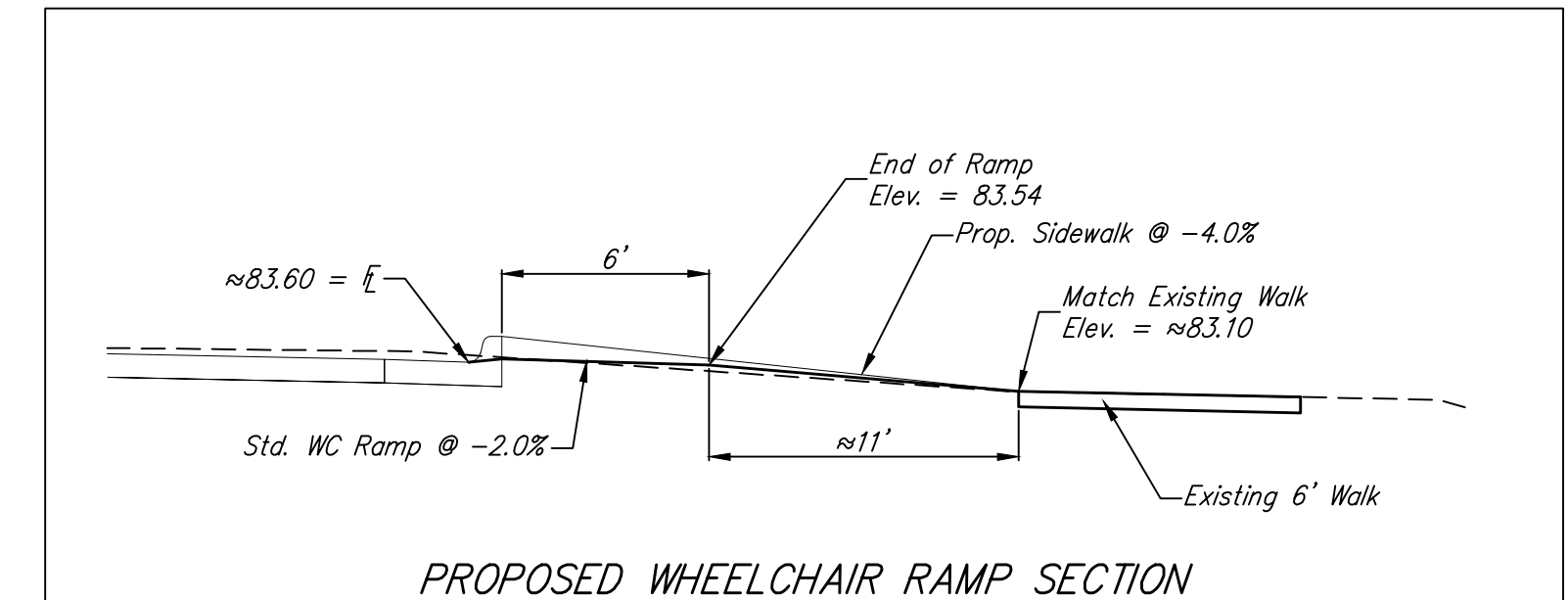
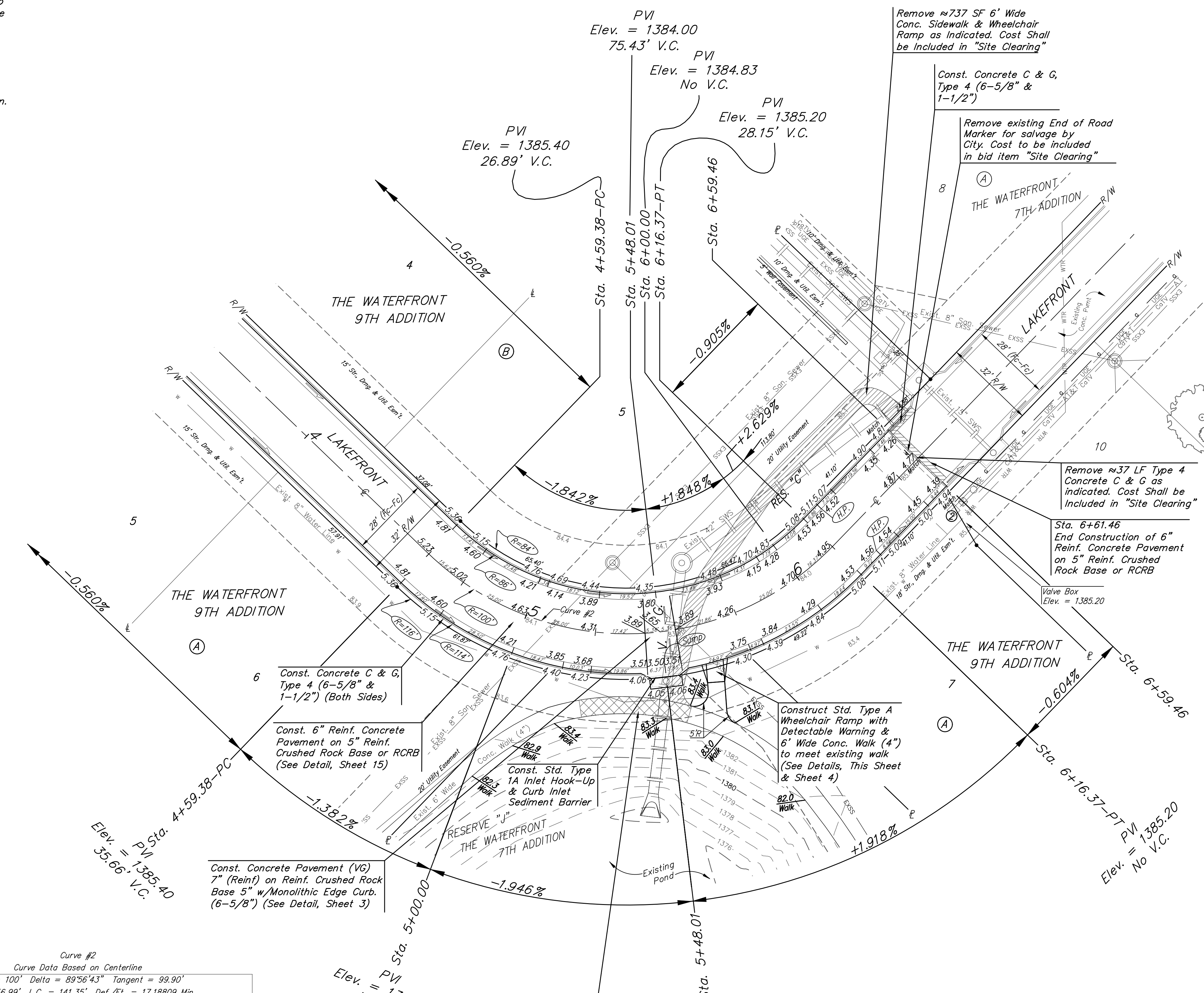
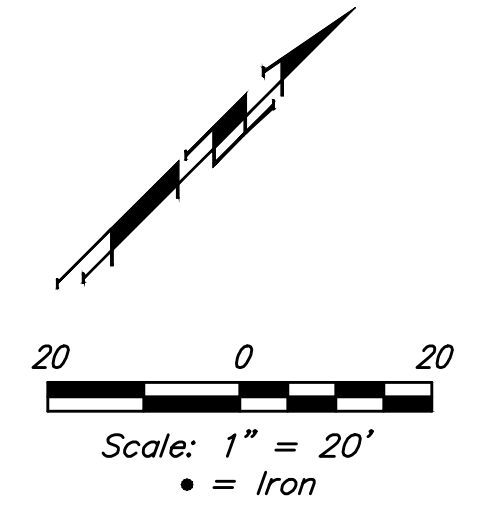


**BENCHMARK #1:**  
Chiseled square on top of curb, west end of south median curb within Red Oaks R/W, east side of Waterfront Parkway R/W. Elev. = 1380.50 NAVD88

**BENCHMARK #2:**  
Chiseled cross on conc. sidewalk, deflection corner in northwest line of Reserve "J", The Waterfront Seventh Addition. Elev. = 1381.88 NAVD88



Curve #2  
Curve Data Based on Centerline  
Rad. = 100' Delta = 89°56'43" Tangent = 99.90'  
Arc = 156.99' L.C. = 141.35' Def./Ft. = 17.18809 Min.

Station	Arc	Face Chord Lengths		Defl.	Total Defl.
		8' Left	8' Right		
4+59.38	-	-	-	0'00"00"	0'00"00"
4+75.00	15.62'	12.17'	19.04'	4'28"29"	4'28"29"
5+00.00	25.00'	19.45'	30.42'	7'09"42"	11'38"11"
5+25.00	25.00'	19.45'	30.42'	7'09"42"	18'47"53"
5+50.00	25.00'	19.45'	30.42'	7'09"42"	25'57"35"
5+75.00	25.00'	19.45'	30.42'	7'09"42"	33'07"17"
6+00.00	25.00'	19.45'	30.42'	7'09"42"	40'16"59"
6+16.37	16.37'	12.75'	19.95'	4'41"22"	44'58"21"

VALVE LOCATION TABLE

VALVE NUMBER	BASELINE STATION	OFFSET DISTANCE	OFFSET DIRECTION
1	0+32.90	19.5'	Rt.
2	6+54.62	26'	Rt.

Paving contractor will be responsible to operate all water valves on the project, in the presence of the inspector, to ensure accessibility to the valves, and that all valves are left in the "ON" position when the project is completed.

Replace existing sidewalk removed with Waterline project. May need protection curb along sidewalk to account for grade separation at back of inlet especially.



**Baughman** The Waterfront 9th Addition  
**LAKEFRONT**  
Sta. 4+59.36 to Sta. 6+59.44

Baughman Company, P.A. 315 Ellis St. Wichita, KS 67211 P 316-262-7271 F 316-262-0149  
ENGINEERING | SURVEYING | PLANNING | LANDSCAPE ARCHITECTURE

PROJECT NUMBER 472-85377	DESIGN AEG	DRAWN JAK
REVISIONS:	APPROVED	DATE 5/05/17
	SCALE Noted	
	SHEET	<b>7 OF 22</b>

I:\Projects\Waterfront Ninth Addition\_16-09\225\Engineering\STR\_1612-E615\STR PLANS.dwg