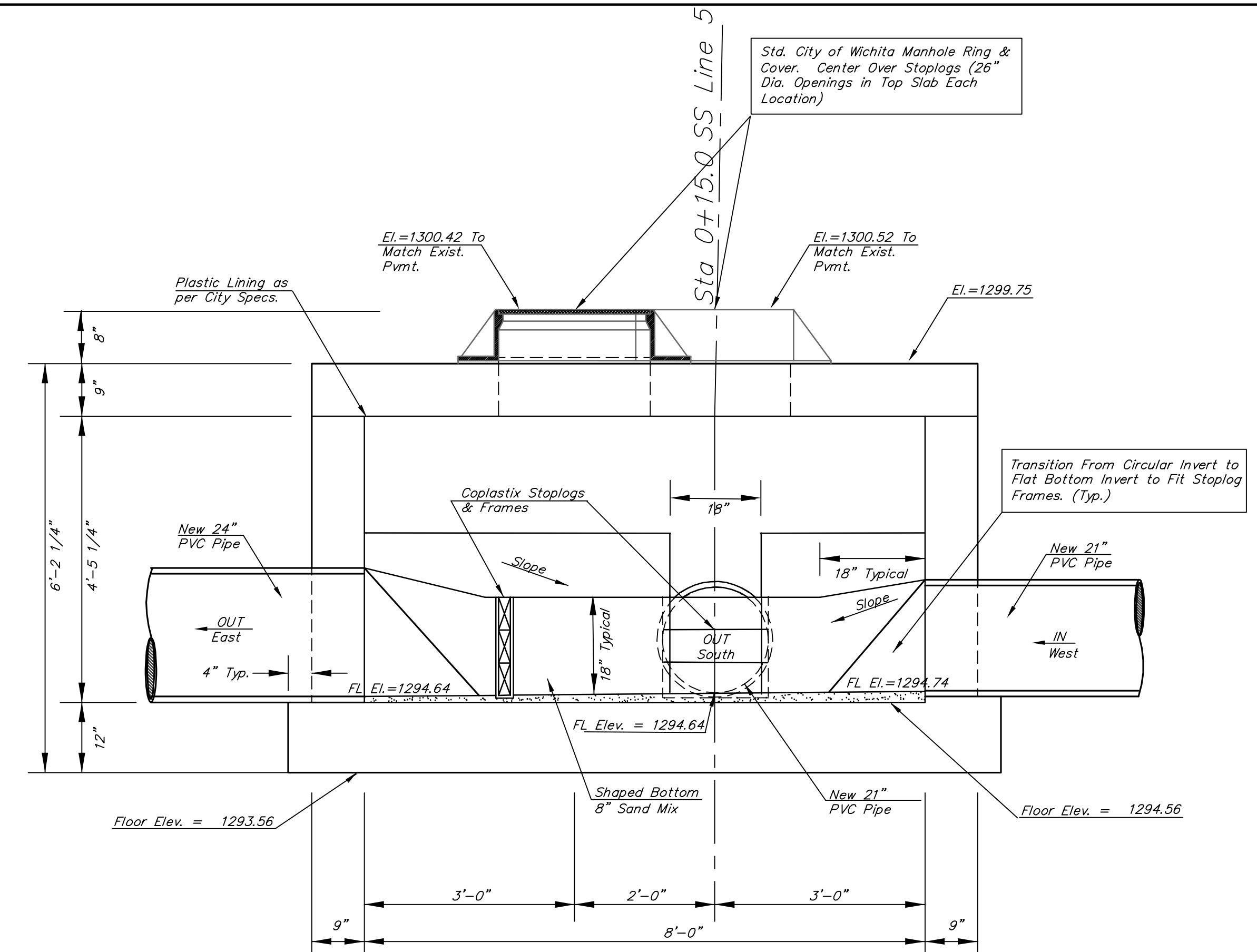
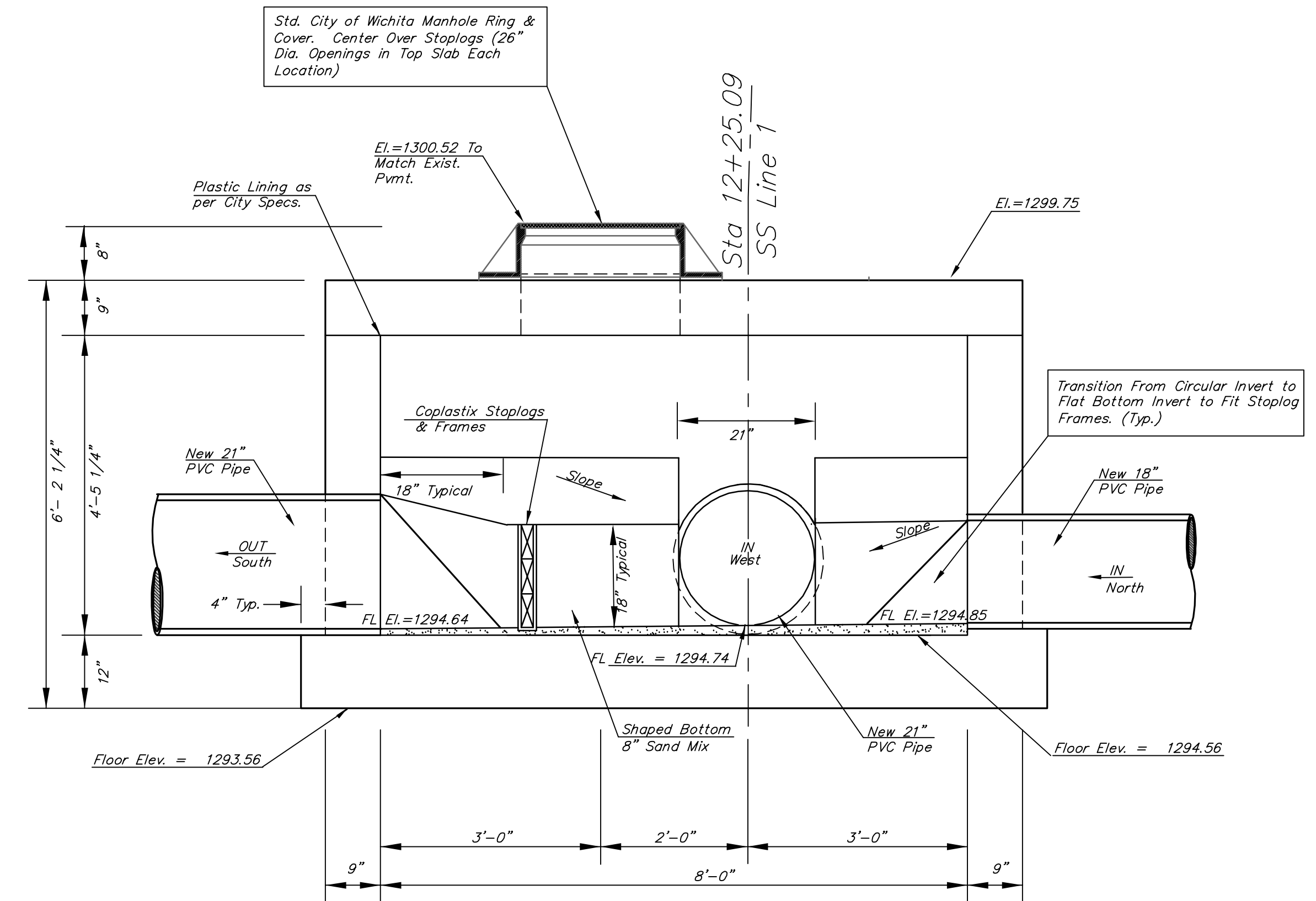


DIVERSION STRUCTURE PLAN LAYOUT



SECTION A-A



SECTION B-B

Copolymer Stoplogs and Stainless Steel Frames as Manufactured by Plastifab, Inc. or approved equal. Provide 3'-6" X 18" Stoplogs for Adjustment at Each Location. Install Frames into Conc. as per Mfg Instruction.

Transition From Circular Invert to Flat Bottom Invert to Fit Stoplog Frames (Typ.)

Std. City of Wichita Manhole Ring & Cover. Center Over Stoplogs (26" Dia. Openings in Top Slab Each Location)

* - All Invert Walls to be Vertical.

Diversion Structure Size Determined By Sweep Radii. Contractor May Reduce Structure Size W/ Engineers Approval. Contractor to Submit Shop Drawings for Approval.

Std. City of Wichita Manhole Ring & Cover. Center Over Stoplogs (26" Dia. Openings in Top Slab Each Location)

Transition From Circular Invert to Flat Bottom Invert to Fit Stoplog Frames. (Typ.)

Std. City of Wichita Manhole Ring & Cover. Center Over Stoplogs (26" Dia. Openings in Top Slab Each Location)

Transition From Circular Invert to Flat Bottom Invert to Fit Stoplog Frames. (Typ.)