

**Benchmarks:**

"□" Cut on Top of Curb at West Line of Lot 7, Block A, Auburn Hills 5th Addition.  
Elevation = 207.73 (City Datum)

Disc in Back of Curb, North of Front Corner Common to Lots 23 and 24, Block D, Auburn Hills 12th Addition.  
Elevation = 191.84 (City Datum)

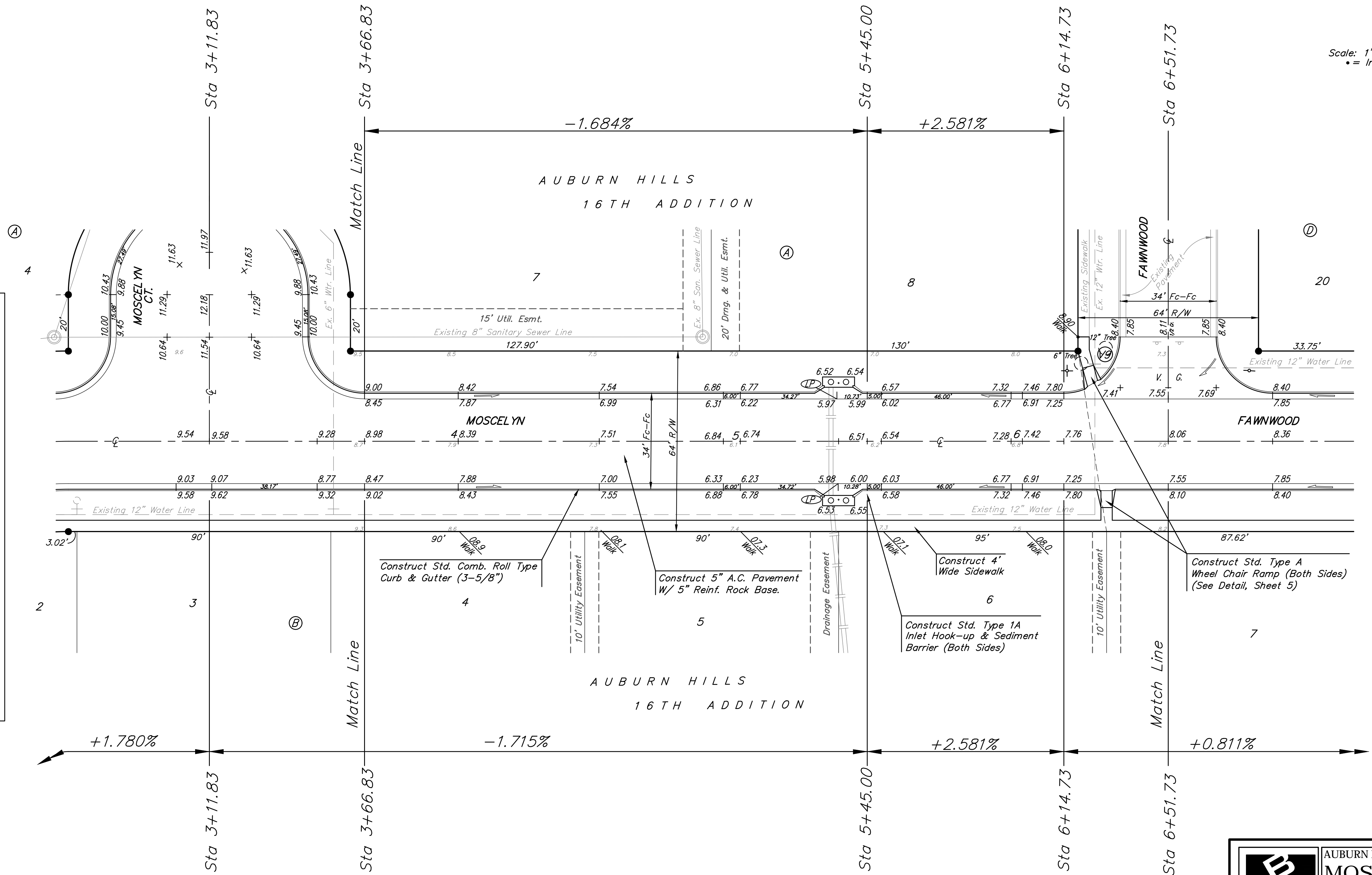
"□" Cut on Center of Catch Basin North of Lot Corner Common to Lots 1 and 15, Block B, Auburn Hills 14th Addition.  
Elevation = 193.65 (City Datum)

P.V.I.  
Elev. = 206.00  
102' V.C.

Scale: 1" = 20'  
• = Iron

**Cart Path Crossing Pavement Markings**

- All pavement markings shall conform to the current standards in the latest publication of the "Manual on Uniform Traffic Control Devices".
- All pavement markings shall meet City of Wichita Standards and the required specifications of the Standard Specifications for State Road and Bridge Construction Edition 1990" by the Kansas Dept. of Transportation.



**WATER VALVE LOCATION TABLE**

VALVE NUMBER	BASELINE STATION	OFFSET DISTANCE	OFFSET DIRECTION
V9	6+25.73	27.5'	Lt.

Paving Contractor will be Responsible to Operate all Water Valves on the Project, in the Presence of the Inspector, to Ensure Accessibility to the Valves, and that all Valves are Left in the "ON" Position when the Project is Completed.

P.V.I.  
Elev. = 210.00  
88' V.C.

P.V.I.  
Elev. = 206.00  
102' V.C.

P.V.I.  
Elev. = 207.80  
No V.C.

**Note:** Roll Type Curb & Gutter (3-5/8") to be Constructed on the Pavement Shown on this Sheet. Top of Curb Elevations are Given for Full Height Curb (6-5/8").

	AUBURN HILLS PHASE 1C	
	MOSCELYN PAVING IMPROVEMENTS	
<small>Baughman Company, P.A. 315 Ellis St. Wichita, KS 67211 P 316-262-7271 F 316-262-0149 ENGINEERING   SURVEYING   PLANNING   LANDSCAPE ARCHITECTURE</small>		
PROJECT NUMBER 472-85032	DESIGN AEG/DMV	DRAWN DMV
REVISIONS:	APPROVED	DATE 03/17
	SCALE NOTED	SHEET 10 OF 23