

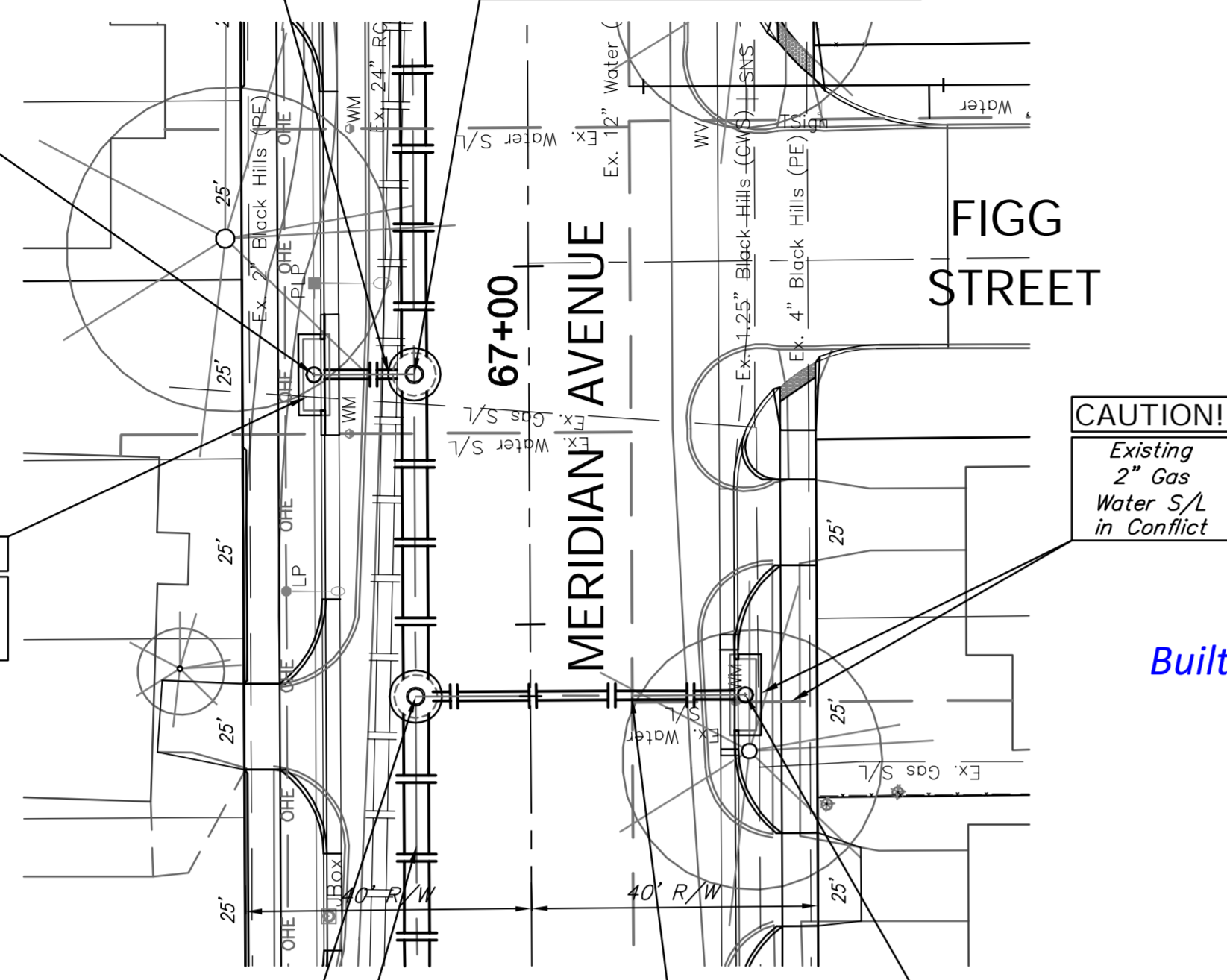
BENCHMARK:
 BM #4 - Chiseled "b" on the Top of Curb on the South Side of
 Figg Street, 80± East of Centerline of Meridian.
 Elev. = 1295.08 (NAVD 88)

Sta. 0+00.00, Begin SWS Line 4j =
 B.L. Sta. 66+85.00, 30.00' Lt.
 Construct Inlet, Curb (Type 1)
 (L=10', W=3')
 Top Elev. = 1294.88

CAUTION!
 Existing
 Gas S/L
 in Conflict

CAUTION!
 Existing
 24" RCP
 Crossing

Sta. 0+14.00, End SWS Line 4j =
 Sta. 20+23.56, SWS Line 4 =
 B.L. Sta. 66+85.00, 16.00' Lt.
 Connect to Prop. Manhole, Grout,
 & Seal Tight.



SCALE:
 HORIZONTAL: 1" = 20'
 VERTICAL: 1" = 5'

Built per plan

Sta. 0+00.00, Begin SWS Line 4i =
 Sta. 19+78.56, SWS Line 4 =
 B.L. Sta. 66+40.00, 16.00' Lt.
 Connect to Prop. Manhole, Grout,
 & Seal Tight.

CAUTION!
 Existing
 12" Water
 Crossing

Sta. 0+46.00, End SWS Line 4i =
 B.L. Sta. 66+40.00, 30.00' Rt.
 Construct Inlet, Curb (Type 1)
 (L=10', W=3')
 Top Elev. = 1294.69

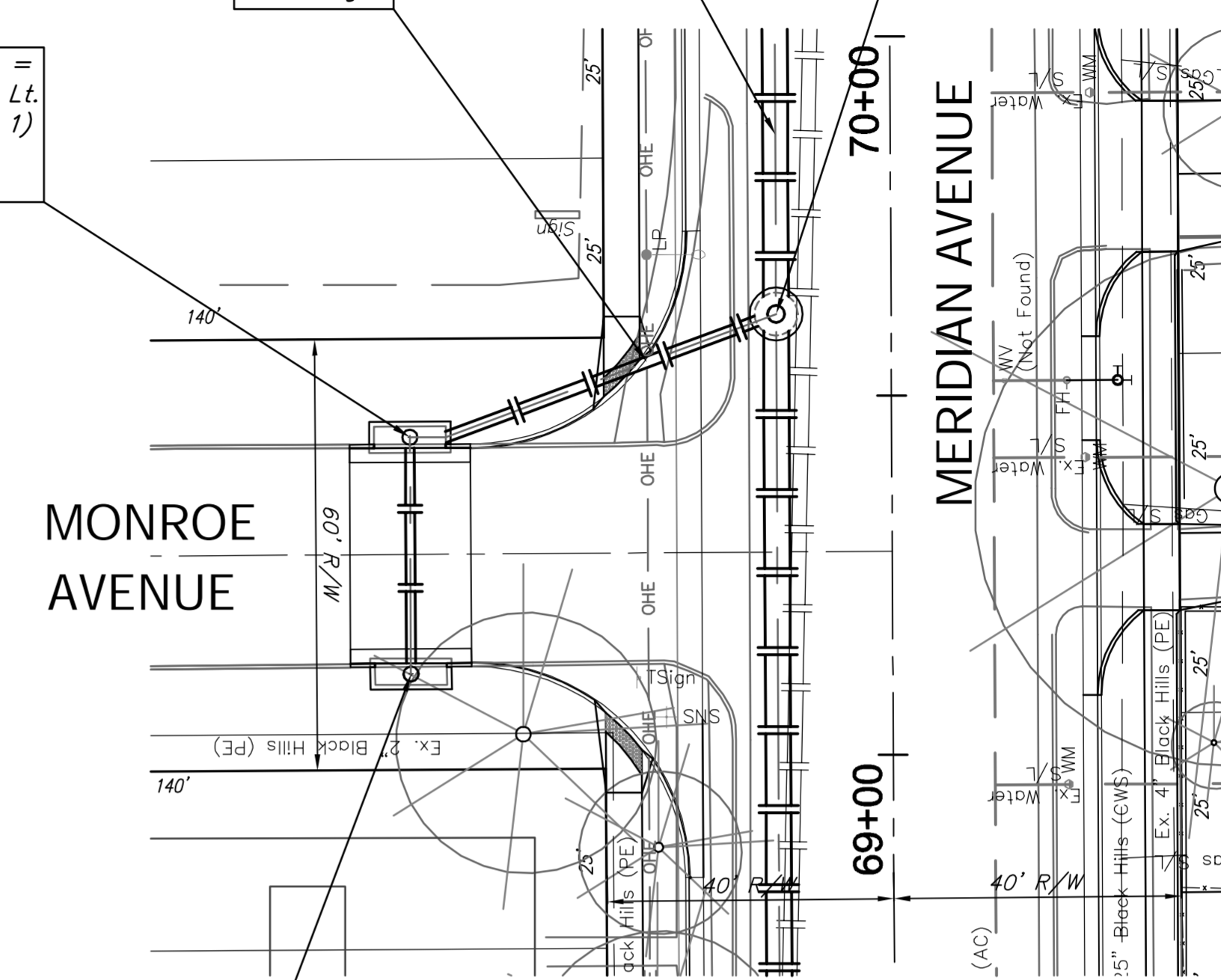
SWS Line 4i & SWS Line 4j

BENCHMARK:
 BM #5 - Chiseled "b" on the Top of Curb on the South Side of
 Dooley Street, 80± East of Centerline of Meridian.
 Elev. = 1296.20 (NAVD 88)

Sta. 0+32.95, SWS Line 4k =
 B.L. Sta. 69+44.53, 67.05' Lt.
 Construct Inlet, Curb (Type 1)
 (L=10', W=3')
 Top Elev. = 1295.50

CAUTION!
 Existing
 O/H Elec
 Crossing

Sta. 0+87.01, End SWS Line 4k =
 Sta. 23+00.00, SWS Line 4 =
 B.L. Sta. 69+61.44, 16.00' Lt.
 Connect to Prop. Manhole, Grout,
 & Seal Tight.

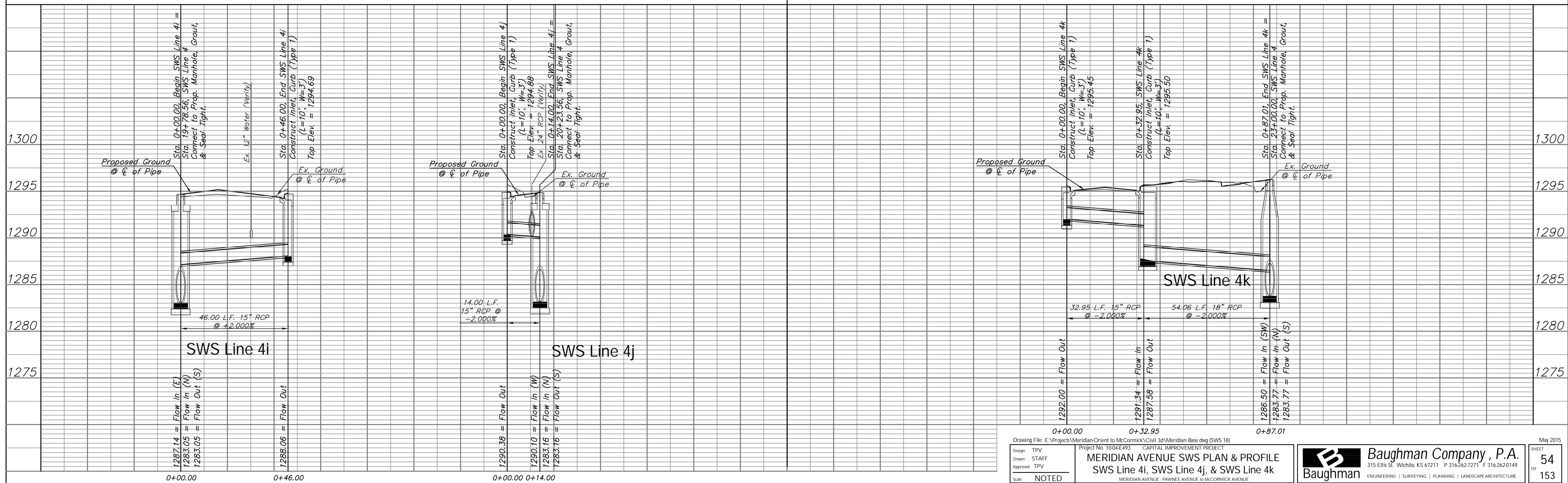


SCALE:
 HORIZONTAL: 1" = 20'
 VERTICAL: 1" = 5'

Built per plan

Sta. 0+00.00, Begin SWS Line 4k =
 B.L. Sta. 69+11.58, 67.05' Lt.
 Construct Inlet, Curb (Type 1)
 (L=10', W=3')
 Top Elev. = 1295.45

SWS Line 4k



Drawing File: E:\Projects\Meridian Orient to McCormick\Civil 3d\Meridian Base.dwg (SWS 18)

Project No: 1004-E493 CAPITAL IMPROVEMENT PROJECT

Design: TPV
 Drawn: STAFF
 Approved: TPV

Scale: NOTED

MERIDIAN AVENUE SWS PLAN & PROFILE
 SWS Line 4i, SWS Line 4j, & SWS Line 4k
 MERIDIAN AVENUE - PAVINE AVENUE TO MCCORMICK AVENUE

Baughman Company, P.A.
 315 Ellis St., Wichita, KS 67211 P 316-262-7271 F 316-262-0149
 ENGINEERING | SURVEYING | PLANNING | LANDSCAPE ARCHITECTURE

May 2015

SHEET 54 OF 153