
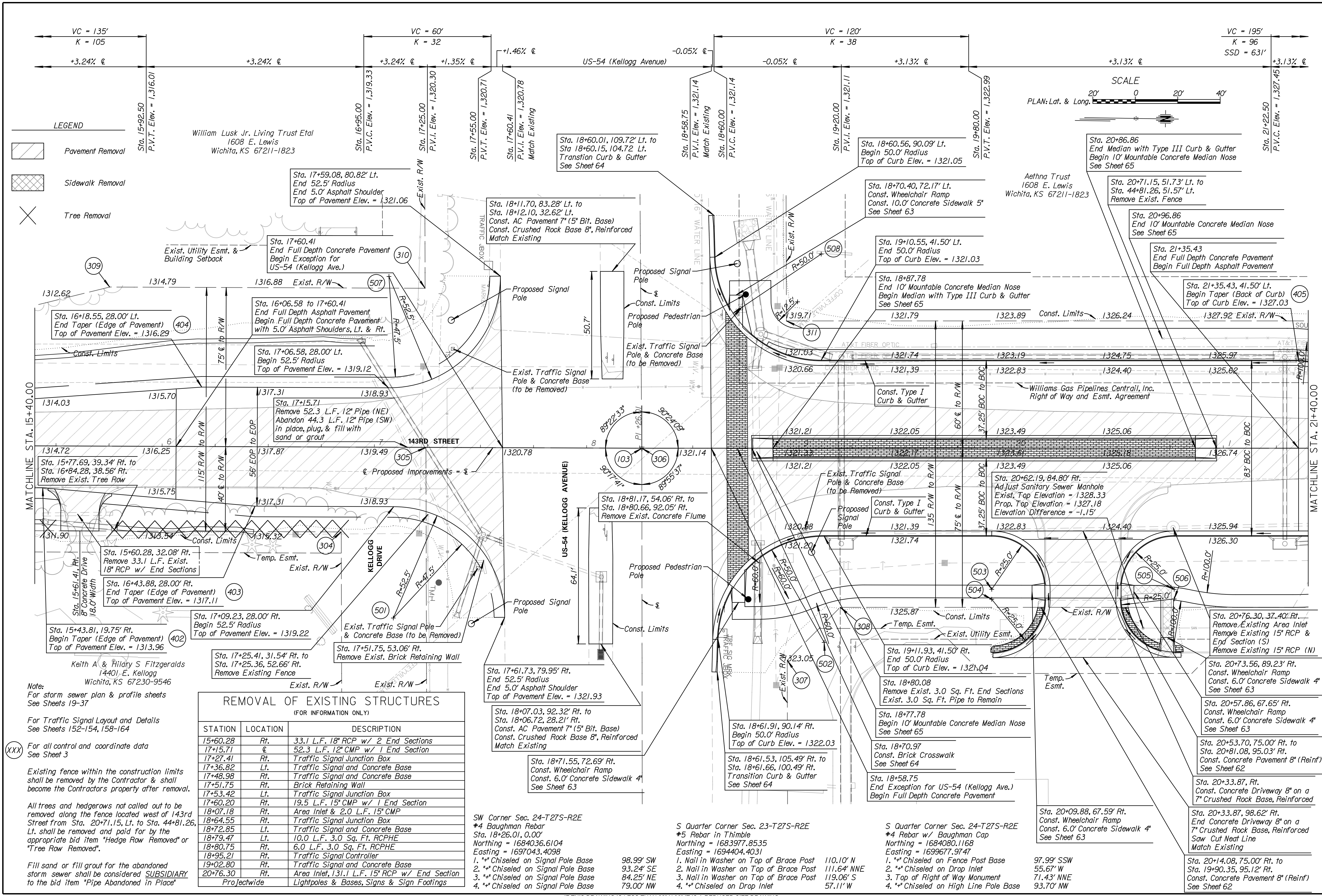


CONSULTANTS:

143RD STREET IMPROVEMENTS
 WICHITA, KANSAS


REVISIONS:	DESCRIPTION	DATE	MARK

PROJ NO: 87 N-0614-01	
SCALE: 1" = 20'	
DATE: 5/26/2017	
DESIGNED BY: TAU	
DRAWN BY: TAU	
CHECKED BY: MDB	
SHEET TITLE:	
143RD STREET PLAN & PROFILE	
STA. 15+40.00 TO STA. 21+40.00	
SHEET NO.	11
SHEET	11 OF 236



LEGEND

- Pavement Removal
- Sidewalk Removal
- Tree Removal

William Lusk Jr. Living Trust Etal
 1608 E. Lewis
 Wichita, KS 67211-1823

SCALE
 PLAN: Lat. & Long.

REMOVAL OF EXISTING STRUCTURES
 (FOR INFORMATION ONLY)

STATION	LOCATION	DESCRIPTION
15+60.28	Rt.	33.1 L.F. 18" RCP w/ 2 End Sections
17+15.71	€	52.3 L.F. 12" CMP w/ 1 End Section
17+27.41	Rt.	Traffic Signal Junction Box
17+36.82	Lt.	Traffic Signal and Concrete Base
17+48.98	Rt.	Traffic Signal and Concrete Base
17+51.75	Rt.	Brick Retaining Wall
17+53.42	Lt.	Traffic Signal Junction Box
17+60.20	Rt.	19.5 L.F. 15" CMP w/ 1 End Section
18+07.18	Rt.	Area Inlet & 2.0 L.F. 15" CMP
18+64.55	Rt.	Traffic Signal Junction Box
18+72.85	Lt.	Traffic Signal and Concrete Base
18+79.47	Lt.	10.0 L.F. 3.0 Sq. Ft. RCPHE
18+80.75	Rt.	6.0 L.F. 3.0 Sq. Ft. RCPHE
18+95.21	Rt.	Traffic Signal Controller
19+02.80	Rt.	Traffic Signal and Concrete Base
20+76.30	Rt.	Area Inlet, 131.1 L.F. 15" RCP w/ End Section
Projectwide		Lightpoles & Bases, Signs & Sign Footings

Note:
 For storm sewer plan & profile sheets
 See Sheets 19-37

For Traffic Signal Layout and Details
 See Sheets 152-154, 158-164

For all control and coordinate data
 See Sheet 3

Existing fence within the construction limits
 shall be removed by the Contractor & shall
 become the Contractor's property after removal.

All trees and hedgerows not called out to be
 removed along the fence located west of 143rd
 Street from Sta. 20+71.15, Lt. to Sta. 44+81.26,
 Lt. shall be removed and paid for by the
 appropriate bid item "Hedge Row Removed" or
 "Tree Row Removed".

Fill sand or fill grout for the abandoned
 storm sewer shall be considered **SUBSIDIARY**
 to the bid item "Pipe Abandoned in Place"

SW Corner Sec. 24-T27S-R2E
 #4 Baughman Rebar
 Sta. 18+26.01, 0.00'
 Northing = 1684036.6104
 Easting = 1697043.4098

1. ** Chiseled on Signal Pole Base 98.99' SW
 2. ** Chiseled on Signal Pole Base 93.24' SE
 3. ** Chiseled on Signal Pole Base 84.25' NE
 4. ** Chiseled on Signal Pole Base 79.00' NW

S Quarter Corner Sec. 23-T27S-R2E
 #5 Rebar in Thimble
 Northing = 1683977.8535
 Easting = 1694404.4031

1. Nail in Washer on Top of Brace Post 110.10' N
 2. Nail in Washer on Top of Brace Post 111.64' NNE
 3. Nail in Washer on Top of Brace Post 119.06' S
 4. ** Chiseled on Drop Inlet 57.11' W

S Quarter Corner Sec. 24-T27S-R2E
 #4 Rebar w/ Baughman Cap
 Northing = 1684080.1168
 Easting = 1699677.9747

1. ** Chiseled on Fence Post Base 97.99' SSW
 2. ** Chiseled on Drop Inlet 55.67' W
 3. Top of Right of Way Monument 71.43' NNE
 4. ** Chiseled on High Line Pole Base 93.70' NW