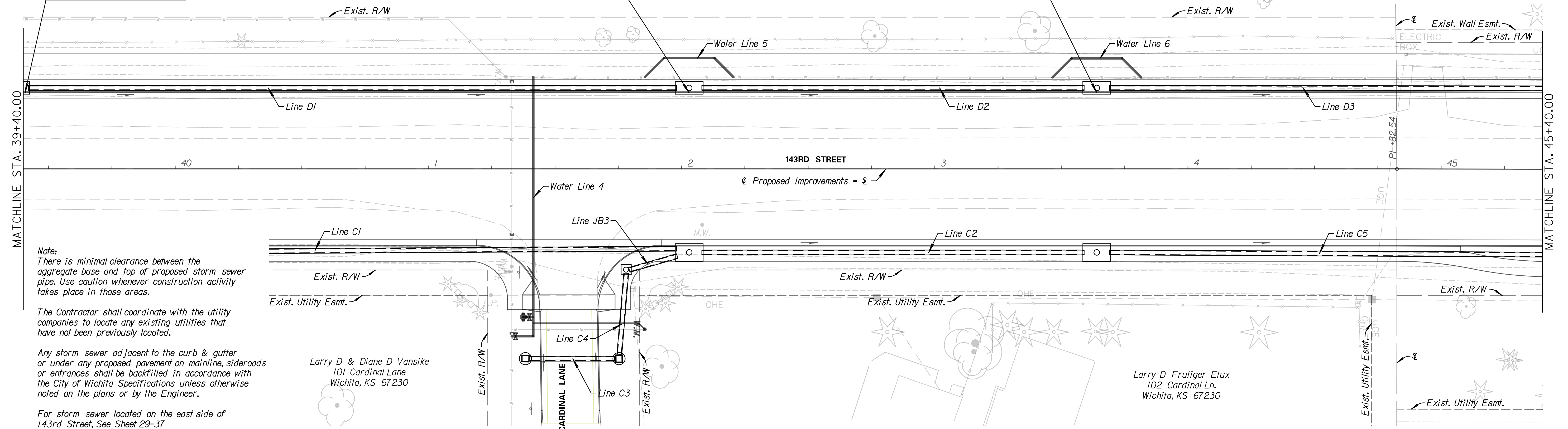
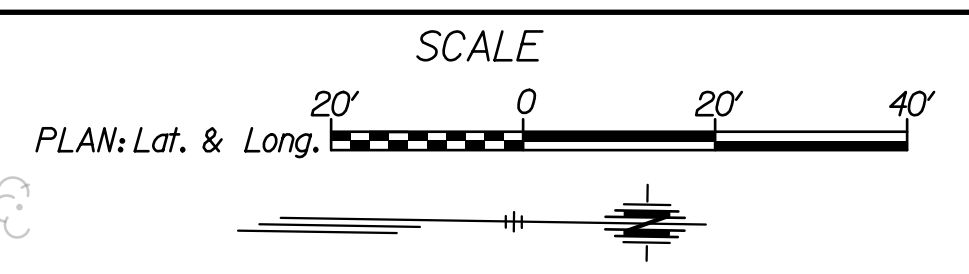


Sta. 12+00.00, Line DI-Dout =
 Sta. 39+37.00, 30.00' Lt.
 Const. Inlet (Type 1), D1
 (L=10.0')(W=4.0')
 Install 18" x 266.0' Storm Sewer
 (RCP)(N)
 See Sheets 19-37

Sta. 14+66.00, Line DI-Dout =
 Sta. 42+03.00, 30.00' Lt.
 Const. Inlet (Type 1), D2
 (L=10.0')(W=4.0')
 Install 18" x 161.0' Storm Sewer
 (RCP)(N)
 See Sheets 19-37

Sta. 16+27.00, Line DI-Dout =
 Sta. 43+64.00, 30.00' Lt.
 Const. Inlet (Type 1), D3
 (L=10.0')(W=4.0')
 Install 18" x 260.1' Storm Sewer
 (RCP)(N)
 See Sheets 19-37



Note:
 There is minimal clearance between the aggregate base and top of proposed storm sewer pipe. Use caution whenever construction activity takes place in those areas.

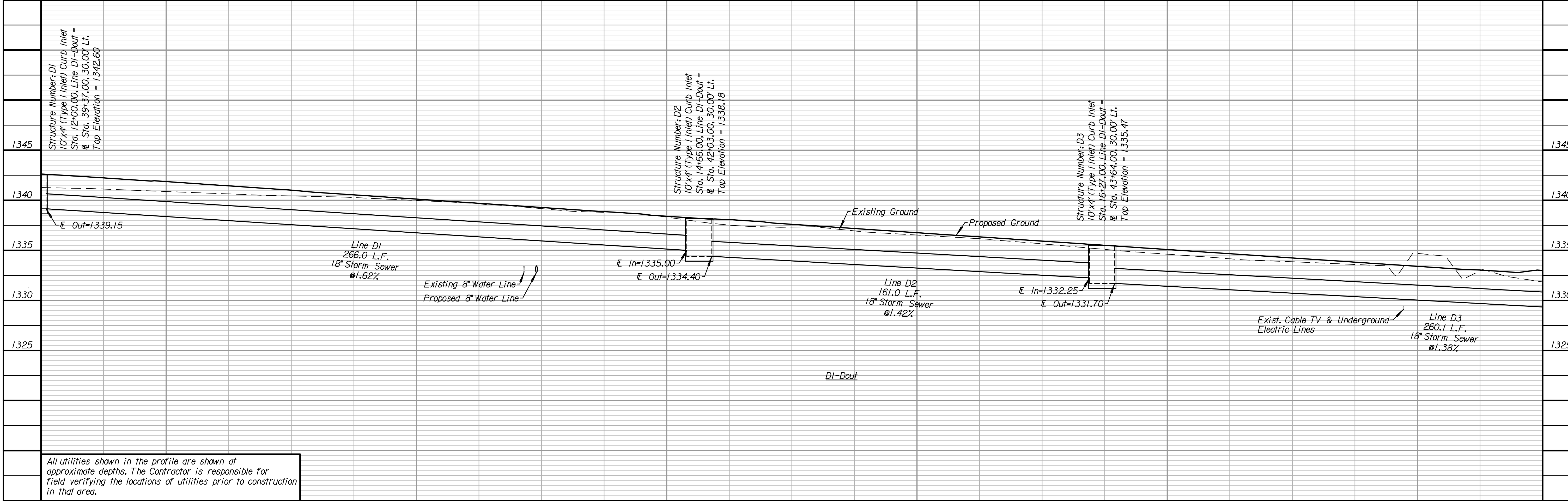
The Contractor shall coordinate with the utility companies to locate any existing utilities that have not been previously located.

Any storm sewer adjacent to the curb & gutter or under any proposed pavement on mainline, sideroads or entrances shall be backfilled in accordance with the City of Wichita Specifications unless otherwise noted on the plans or by the Engineer.

For storm sewer located on the east side of 143rd Street, See Sheet 29-37

Larry D & Diane D Vansike
 101 Cardinal Lane
 Wichita, KS 67230

Larry D Frutiger Etux
 102 Cardinal Ln.
 Wichita, KS 67230



All utilities shown in the profile are shown at approximate depths. The Contractor is responsible for field verifying the locations of utilities prior to construction in that area.

Tran Systems
 245 NORTH WACO
 SUITE 222
 WICHITA, KANSAS 67202
 PHONE: 316-303-3000
 FAX: 316-303-0156

CONSULTANTS:

143RD STREET IMPROVEMENTS
 WICHITA, KANSAS

REVISIONS:	MARK	DATE	DESCRIPTION

PROJ NO: 87 N-0614-01
 SCALE: 1" = 20'
 DATE: 5/26/2017
 DESIGNED BY: TAU
 DRAWN BY: TAU
 CHECKED BY: MDB

SHEET TITLE:
143RD STREET STORM SEWER STA. 39+40.00 TO STA. 45+40.00

SHEET NO.
24