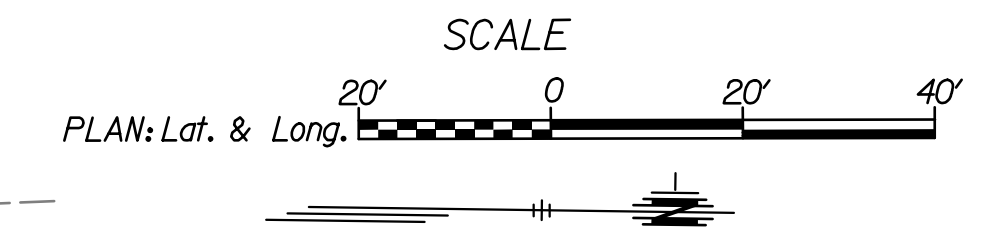


Carmax Auto Superstores Inc.
P.O. Box 239
N Marshfield, MA 02059

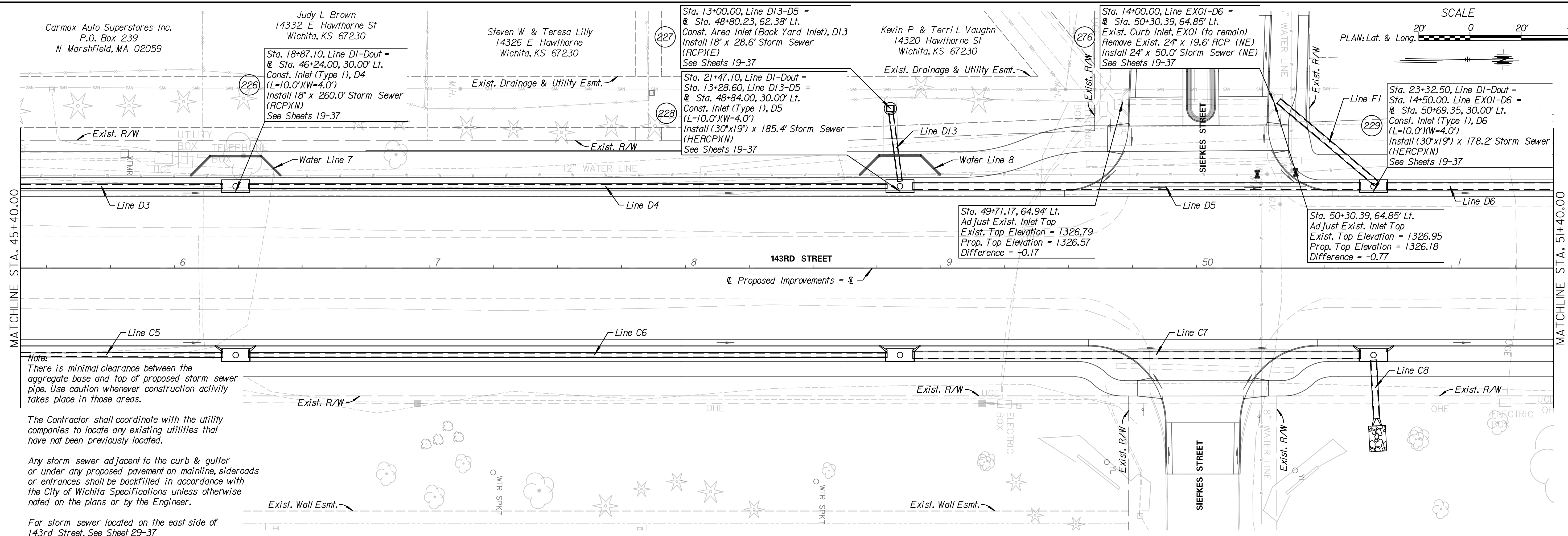
Judy L Brown
14332 E Hawthorne St
Wichita, KS 67230

Steven W & Teresa Lilly
14326 E Hawthorne
Wichita, KS 67230

Kevin P & Terri L Vaughn
14320 Hawthorne St
Wichita, KS 67230



Tran Systems
245 NORTH WACO
SUITE 222
WICHITA, KANSAS 67202
PHONE: 316-303-3000
FAX: 316-303-0166

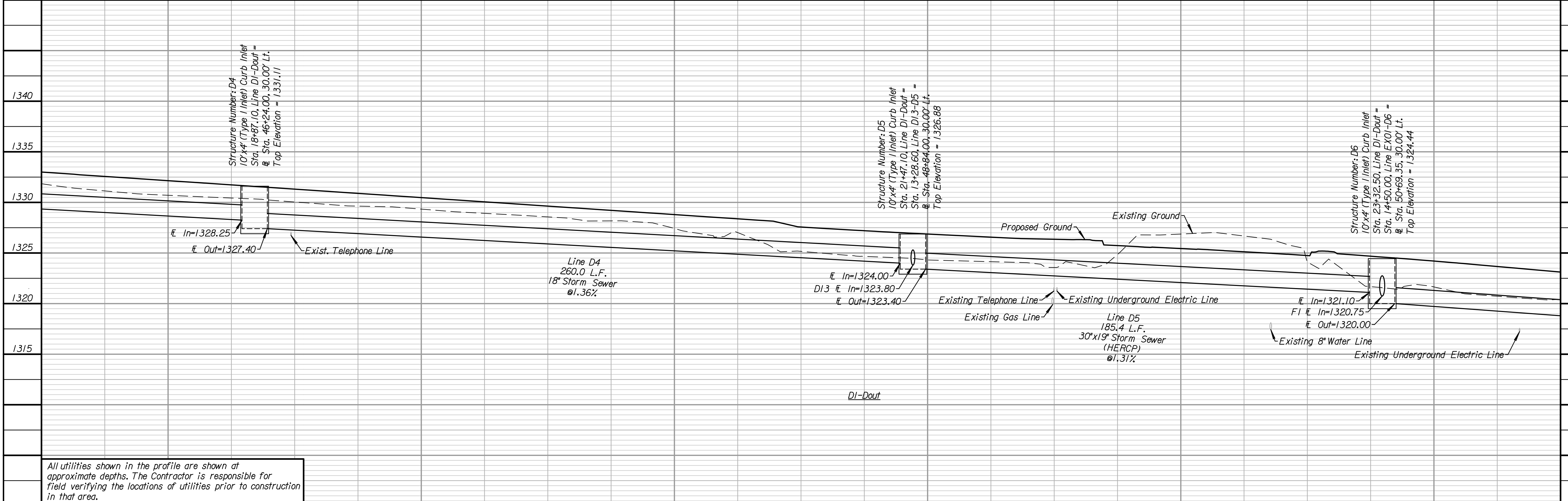


Notes:
There is minimal clearance between the aggregate base and top of proposed storm sewer pipe. Use caution whenever construction activity takes place in those areas.

The Contractor shall coordinate with the utility companies to locate any existing utilities that have not been previously located.

Any storm sewer adjacent to the curb & gutter or under any proposed pavement on mainline, sideroads or entrances shall be backfilled in accordance with the City of Wichita Specifications unless otherwise noted on the plans or by the Engineer.

For storm sewer located on the east side of 143rd Street, See Sheet 29-37



Structure Number: D4
10'x4' (Type I Inlet) Curb Inlet
Sta. 18+87.10, Line DI-Dout =
Sta. 46+24.00, 30.00' Lt.
Top Elevation = 1331.11

Line D4
260.0 L.F.
18" Storm Sewer
@1.36%

Structure Number: D5
10'x4' (Type I Inlet) Curb Inlet
Sta. 21+47.10, Line DI-Dout =
Sta. 13+28.60, Line DI3-D5 =
Sta. 48+84.00, 30.00' Lt.
Top Elevation = 1326.88

Line D5
185.4 L.F.
30"x19" Storm Sewer
(HERCP)
@1.31%

Structure Number: D6
10'x4' (Type I Inlet) Curb Inlet
Sta. 23+32.50, Line DI-Dout =
Sta. 14+50.00, Line EX01-D6 =
Sta. 50+69.35, 30.00' Lt.
Top Elevation = 1324.44

All utilities shown in the profile are shown at approximate depths. The Contractor is responsible for field verifying the locations of utilities prior to construction in that area.

CONSULTANTS:

143RD STREET IMPROVEMENTS
WICHITA, KANSAS
CITY OF WICHITA

REVISIONS:	MARK	DATE	DESCRIPTION

PROJ NO: 87 N-0614-01
SCALE: 1" = 20'
DATE: 5/26/2017
DESIGNED BY: TAU
DRAWN BY: TAU
CHECKED BY: MDB

SHEET TITLE:
**143RD STREET STORM SEWER
STA. 45+40.00 TO
STA. 51+40.00**

SHEET NO.
25
SHEET 25 OF 236