

CONSULTANTS:

143RD STREET IMPROVEMENTS

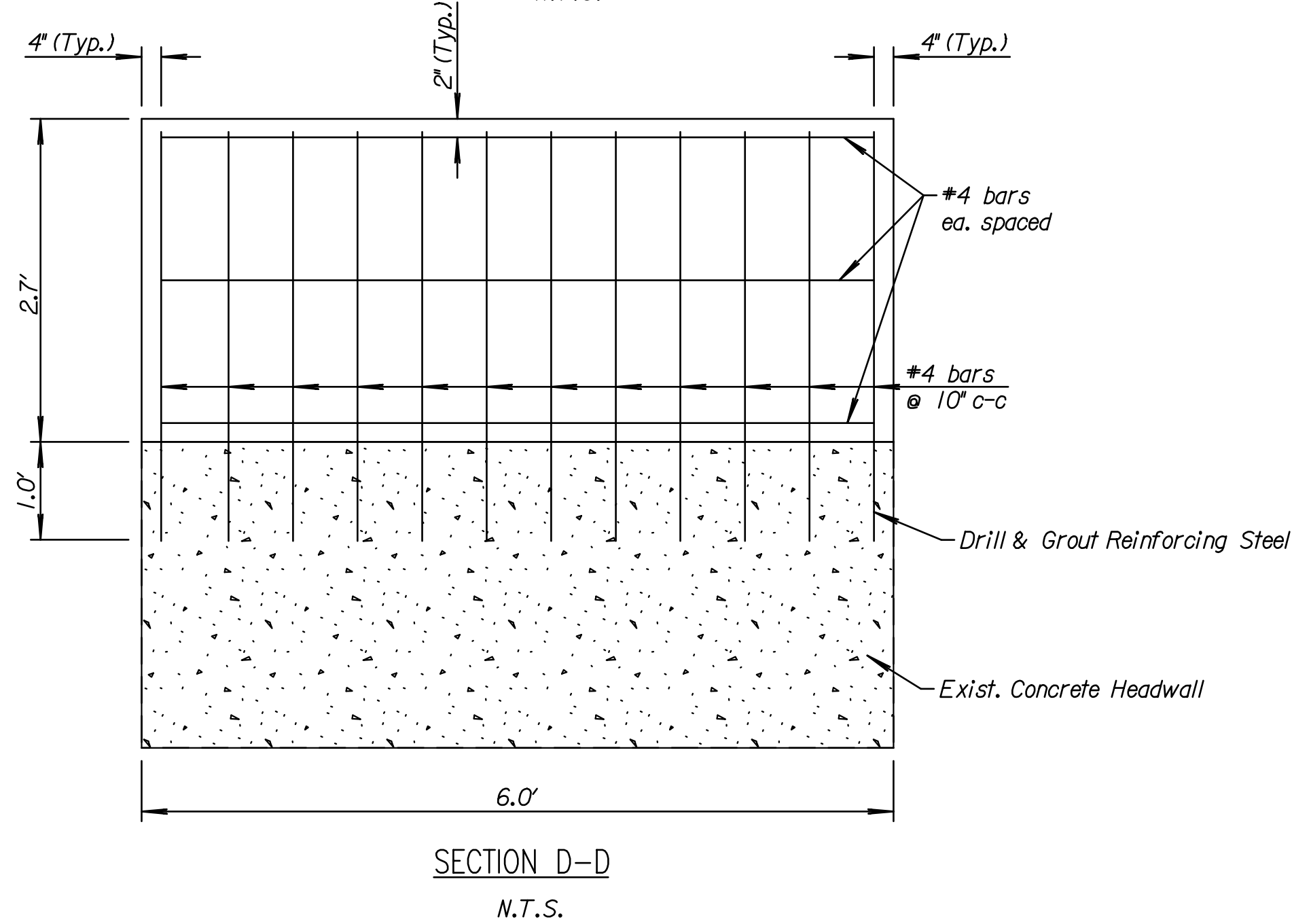
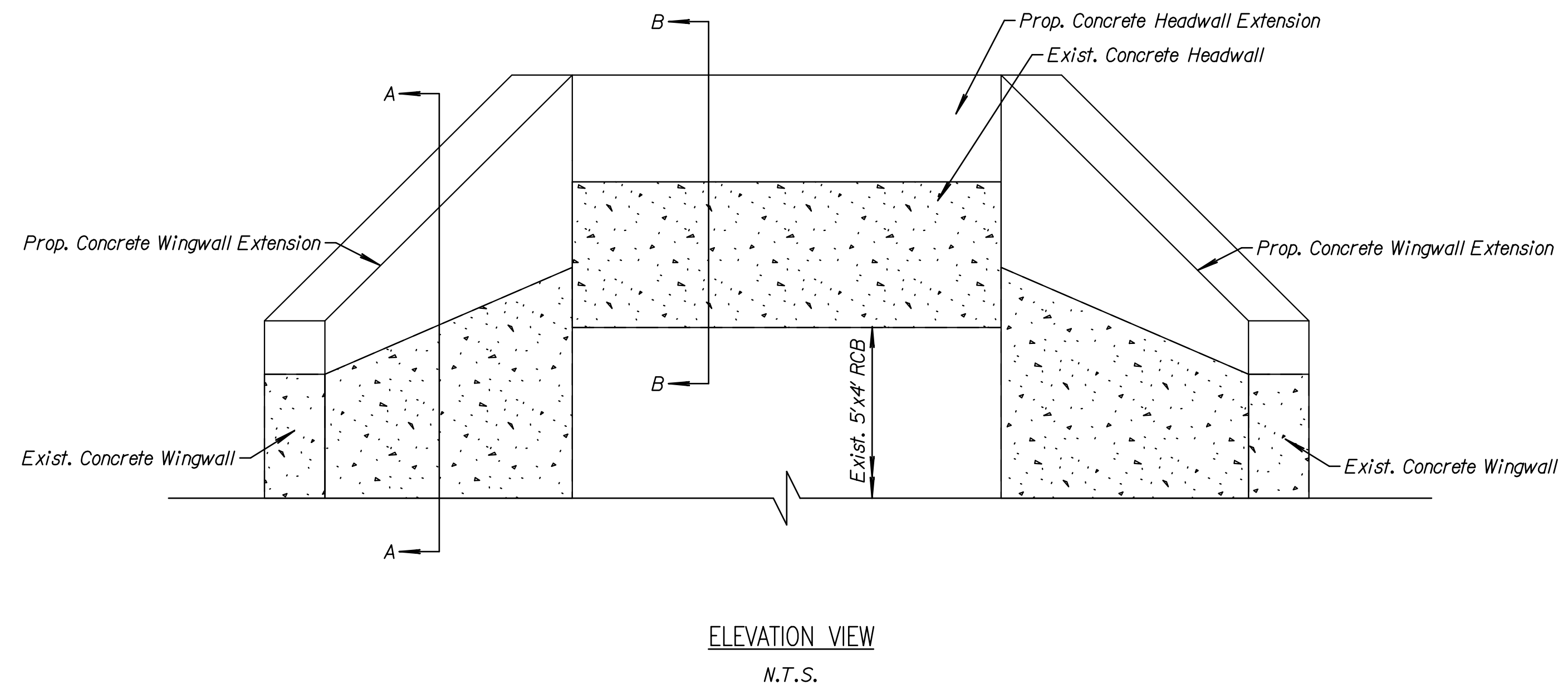
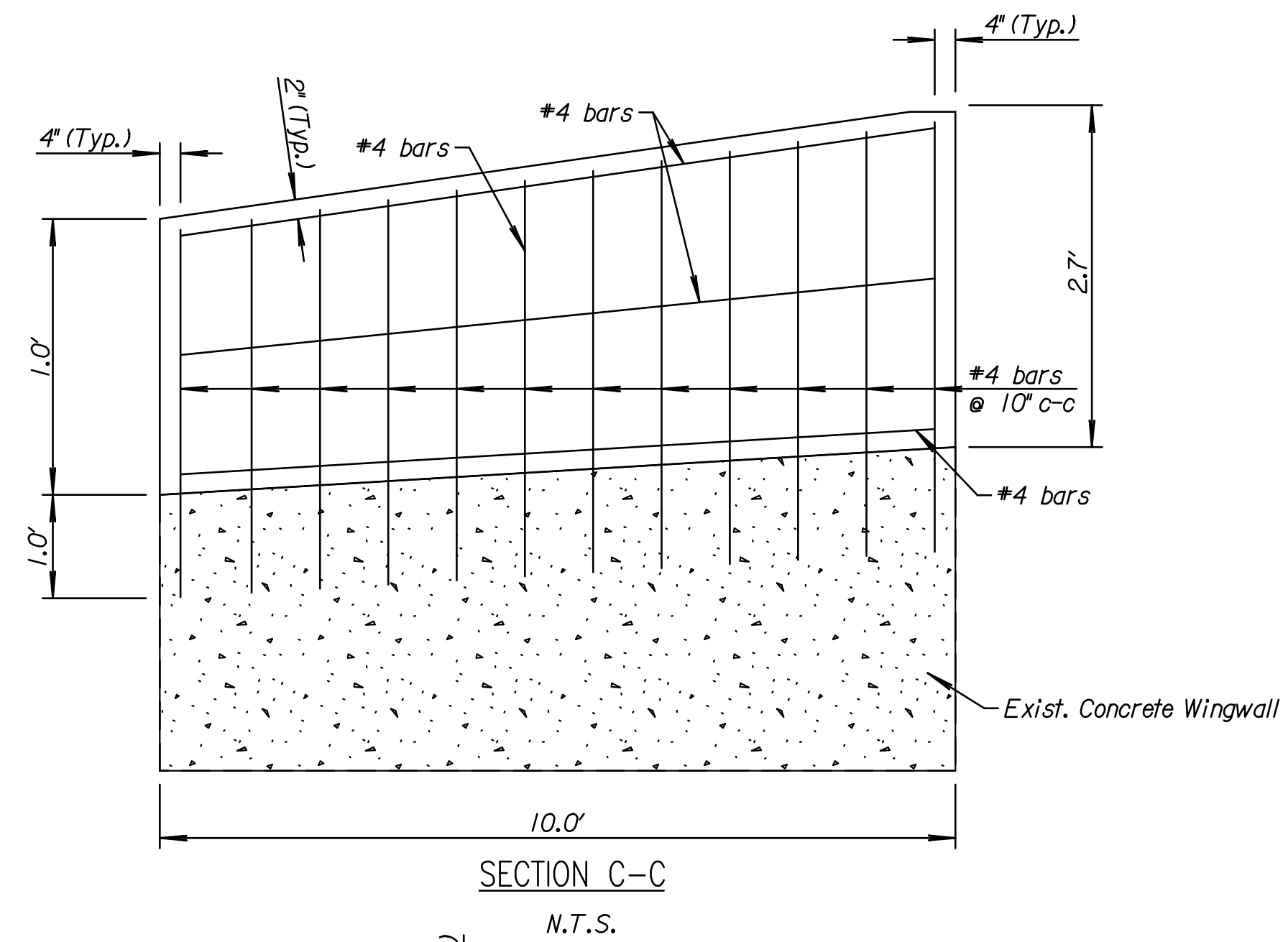
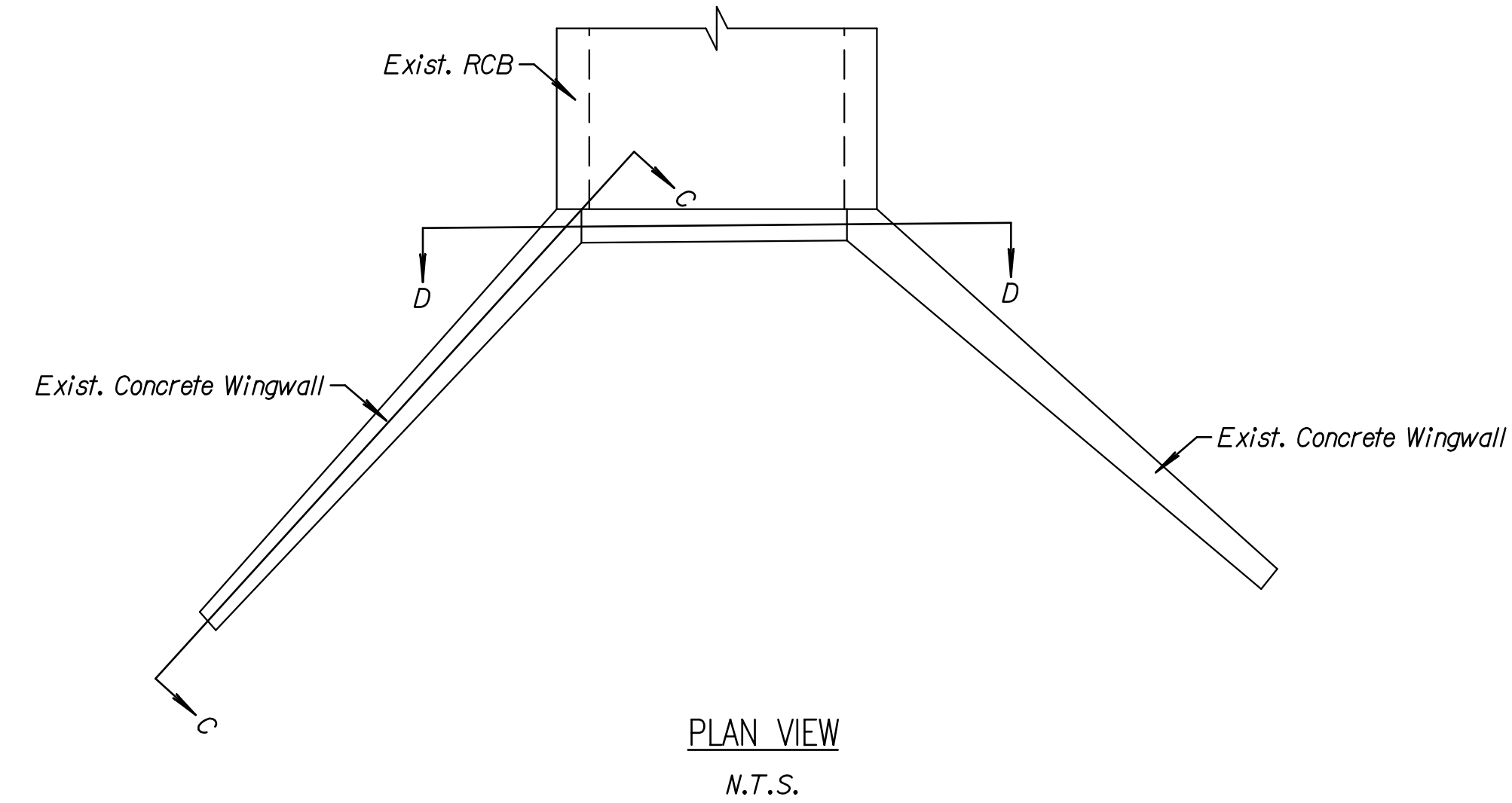
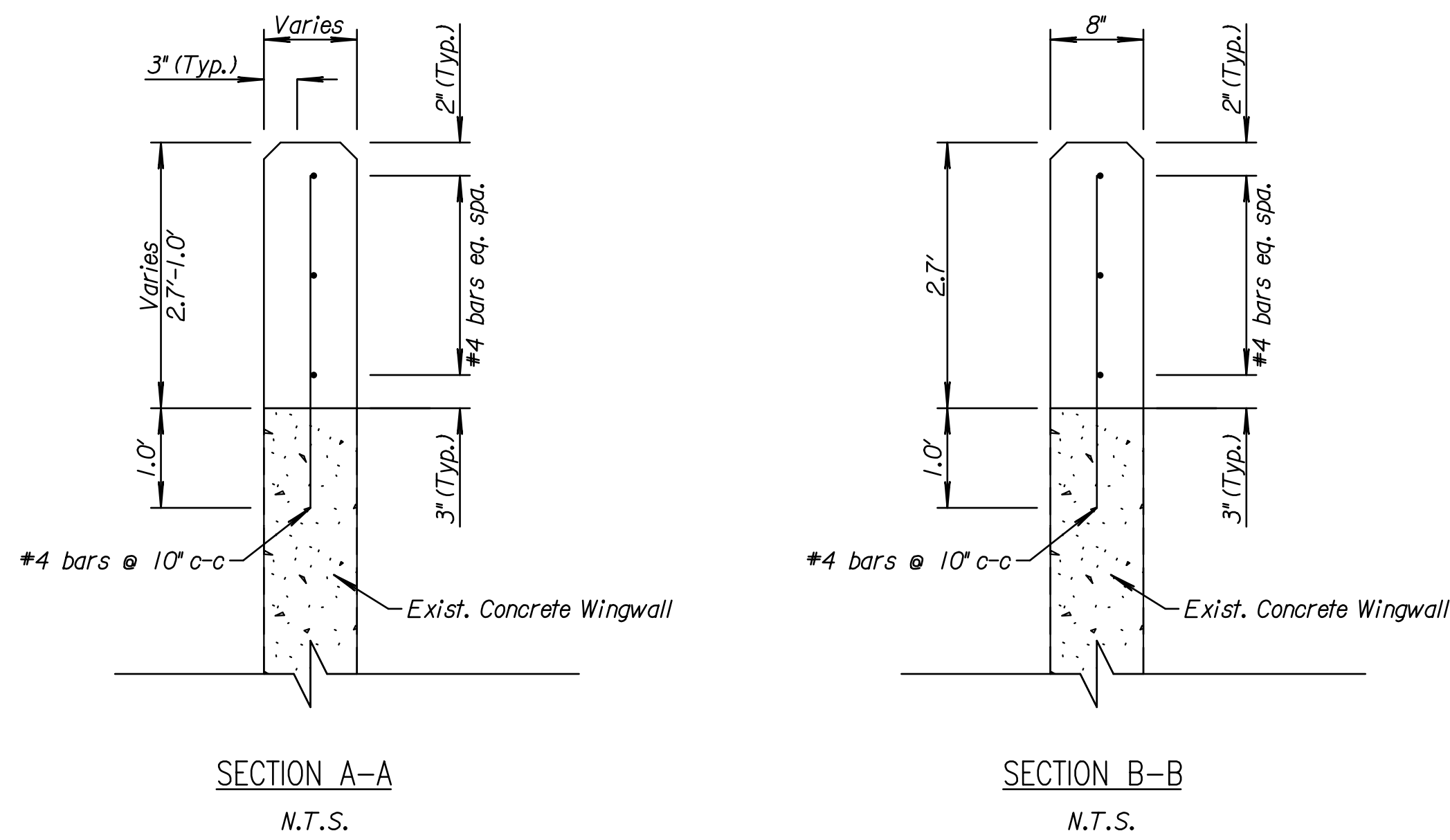


REVISIONS:	MARK	DATE	DESCRIPTION

PROJ NO: 87 N-0614-01  
 SCALE: 1" = 20'  
 DATE: 5/26/2017  
 DESIGNED BY: TAU  
 DRAWN BY: TAU  
 CHECKED BY: MDB

SHEET TITLE:  
**HEADWALL  
 EXTENSION  
 DETAILS**

SHEET NO.  
**50**  
 SHEET 50 OF 236



RECAPITULATION OF MATERIALS  
 FOR HEADWALL EXTENSION  
 (FOR INFORMATION ONLY)

DESCRIPTION	UNIT	QUANTITY
Reinforcing Steel	LB	176.1
Concrete	C.Y.	1.3

Note:  
 All reinforcing steel shall be #4 unless otherwise noted on the plans or approved by the Engineer

When drilling and grouting reinforcing steel, drill the holes 1/4" larger than the reinforcing steel without damaging adjacent concrete. Maintain proper vertical and horizontal alignment while drilling the holes.

In preparing the holes for grout, use compressed air to blow out the hole, use a brush to clean the hold, and use compressed air to blowout and dry out the hole. Vertical holes shall not be left ungrouted over night and exposed to freezing temperatures.

Mix, apply, and cure the grout according to the manufacturer's instructions. Fill the dry, clean holes with an approved grout. Insert the reinforcing steel into the freshly grouted hole so that no voids exist between the reinforcing steel and the concrete. Clean overflow and center the bar in the hold. Drilling and Grouting shall be considered *SUBSIDIARY* to the bid item "Reinforcing Steel"

The concrete for the headwall extension shall be paid for by the bid item "Concrete" and shall be of Grade 4.0 or stronger, unless otherwise specified by the plans or the Engineer and shall conform to the Kansas Department of Transportation 2015 Specifications.

taummed 5/26/2017 11:07:41 AM c:\tran\systems\paw\_bocall\transys\paw\taummed\0228400C-DET\M01-506.dgn