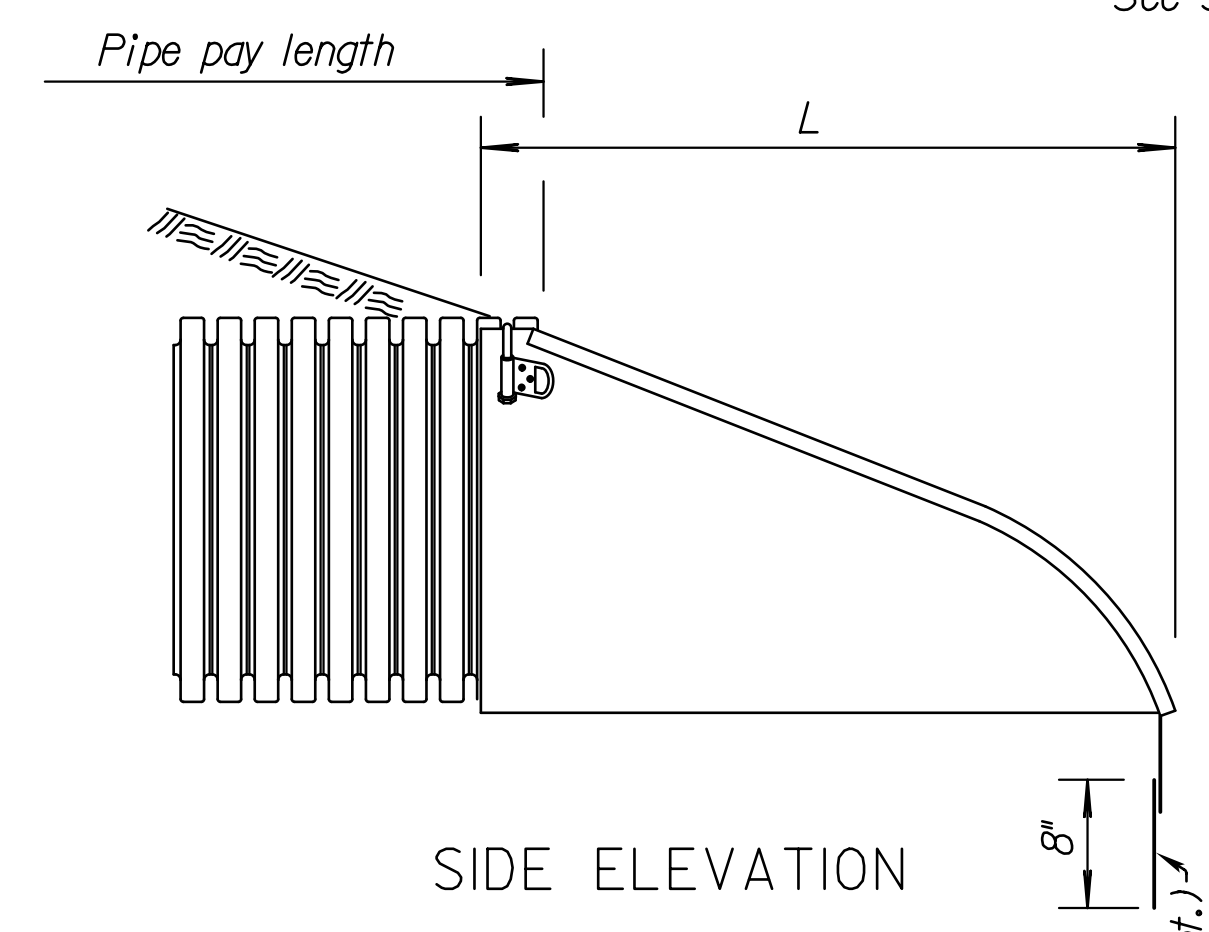
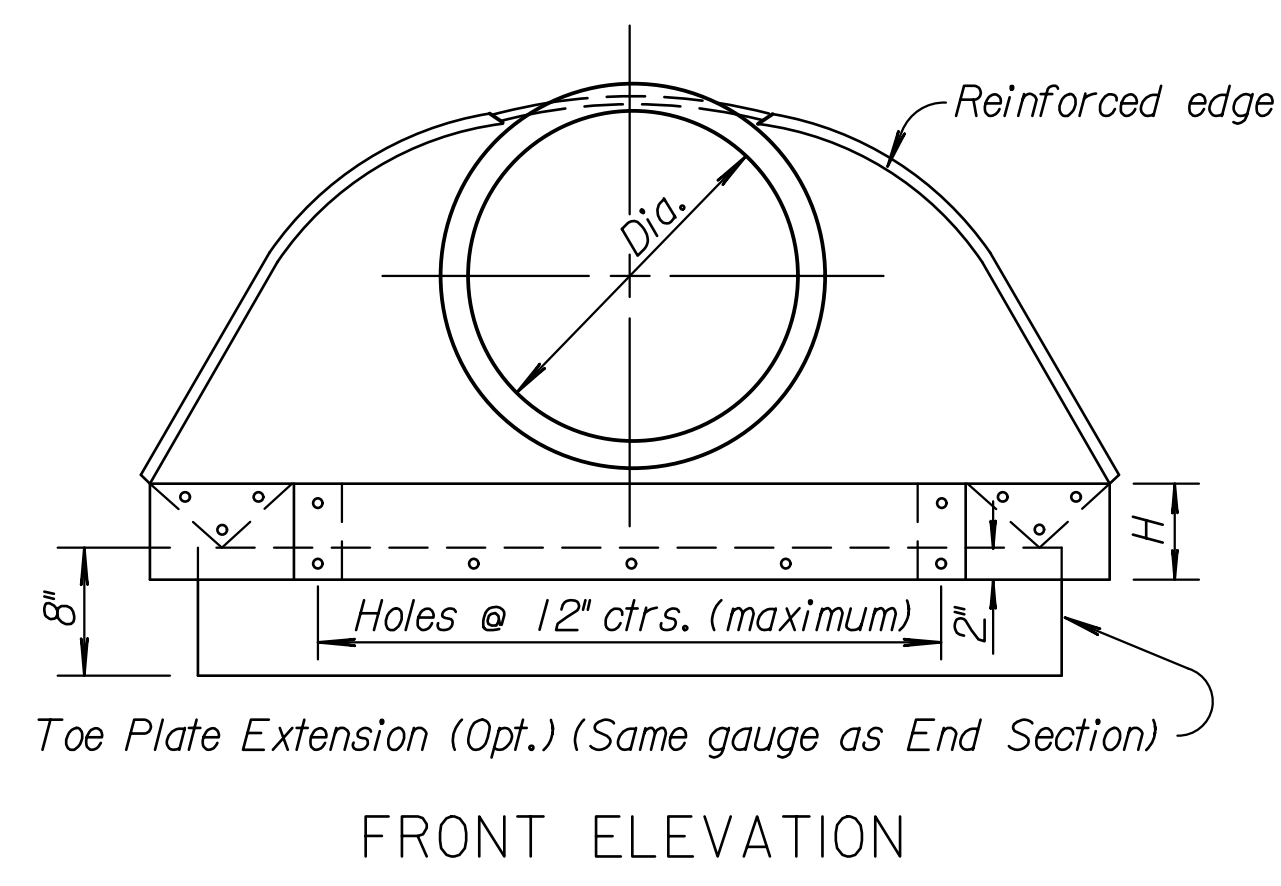
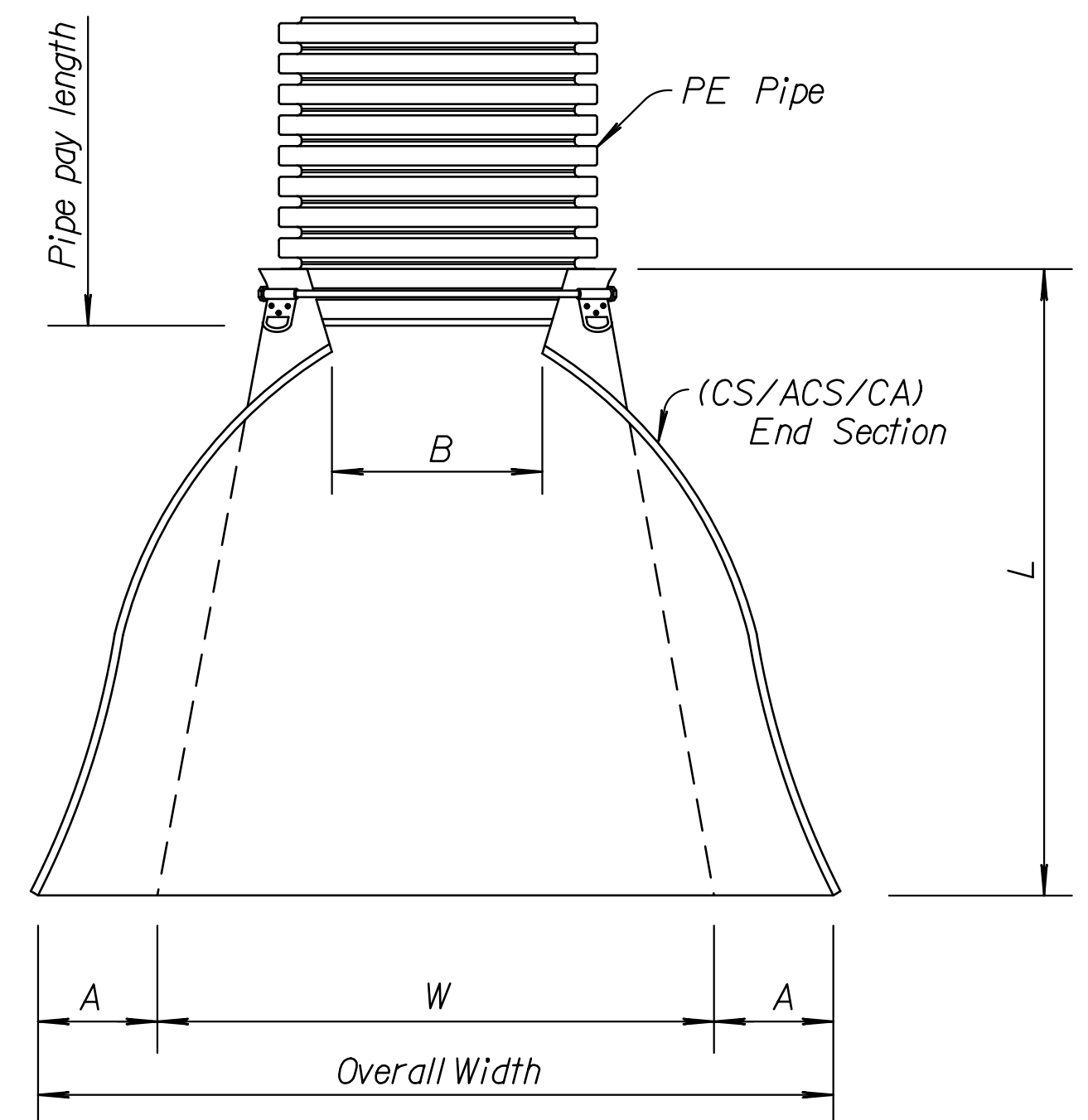


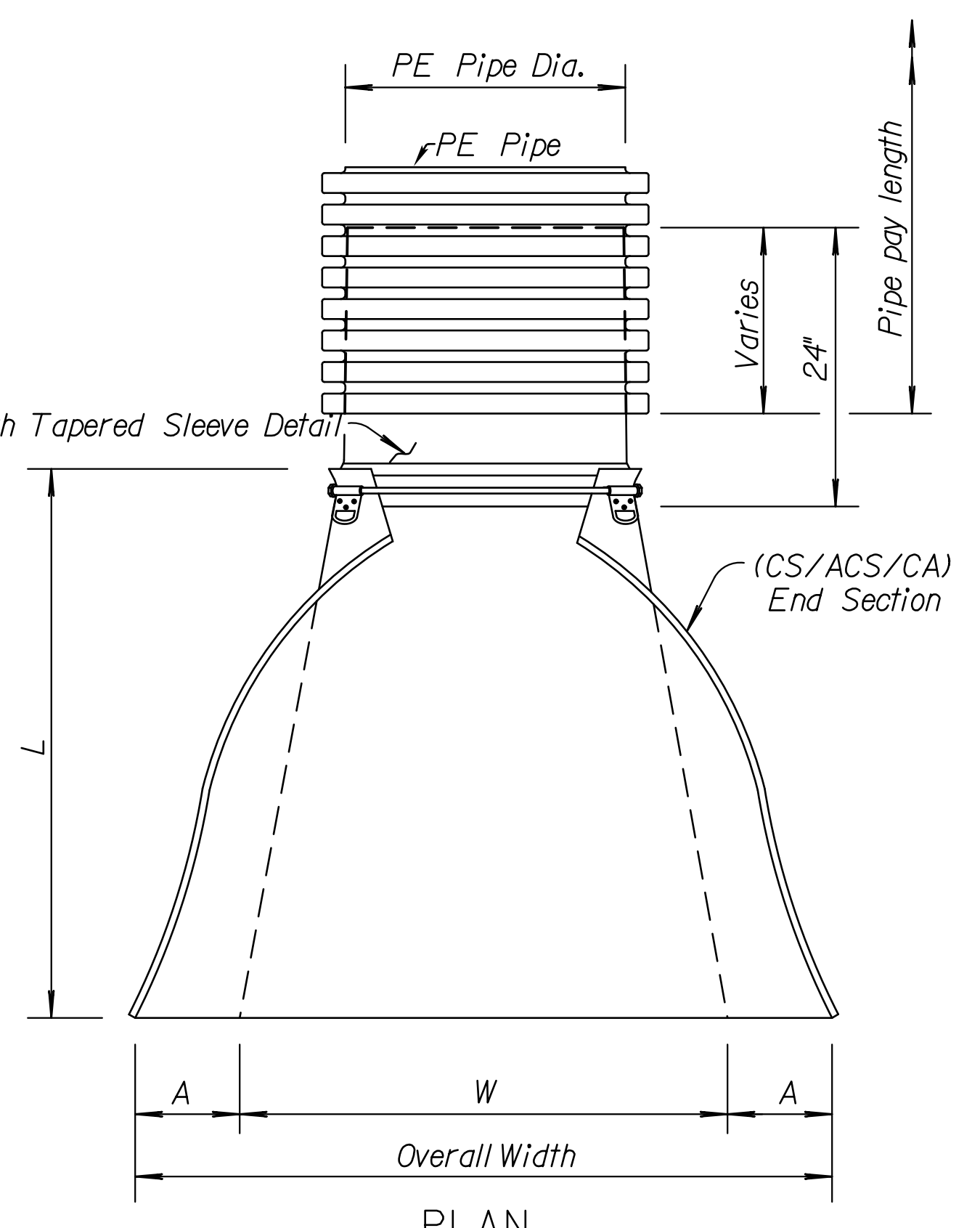
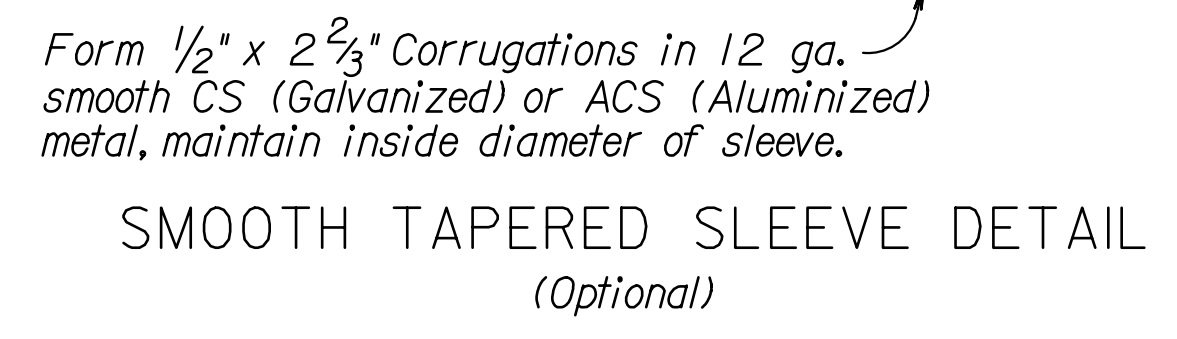
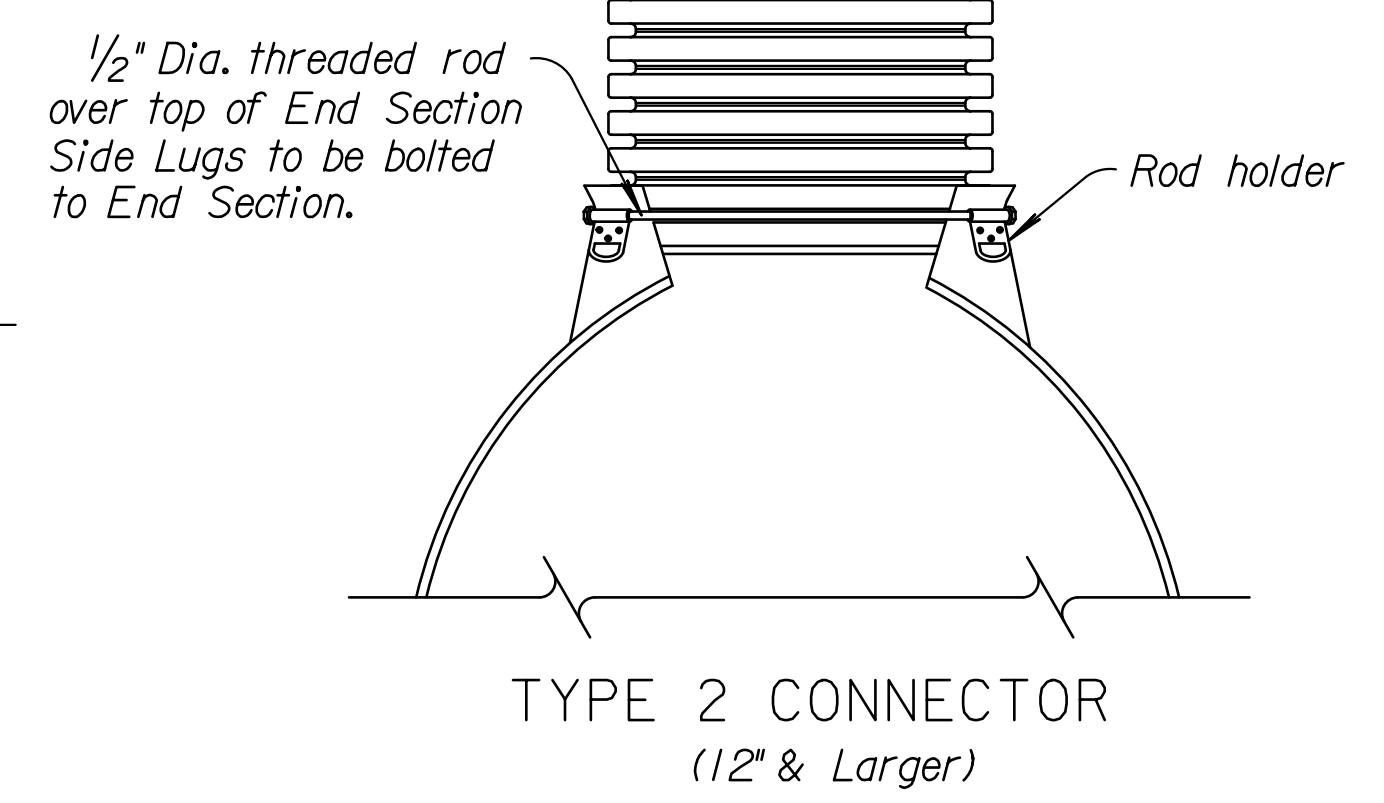
| | | | | |
|--------|--------------|------|-----------|--------------|
| STATE | PROJECT NO. | YEAR | SHEET NO. | TOTAL SHEETS |
| KANSAS | 87 N-0614-01 | 2017 | 55 | 236 |

Note to Designer: KDOT Pipe Policy provides guidance in identifying the prohibited and/or restricted uses of CSP, ACSP, PEP, PVC/P, CAP & RCP. Provide end sections of the same type and coating as the pipe. Exceptions to this are noted in the Standard Specifications. Refer to the KDOT Design Manual, Volume I (Part C), Road Section, "Elements of Drainage & Culvert Design" for structural pipe design information which includes: corrugations, sizes, gauges, maximum/minimum fill heights and classes of pipe.

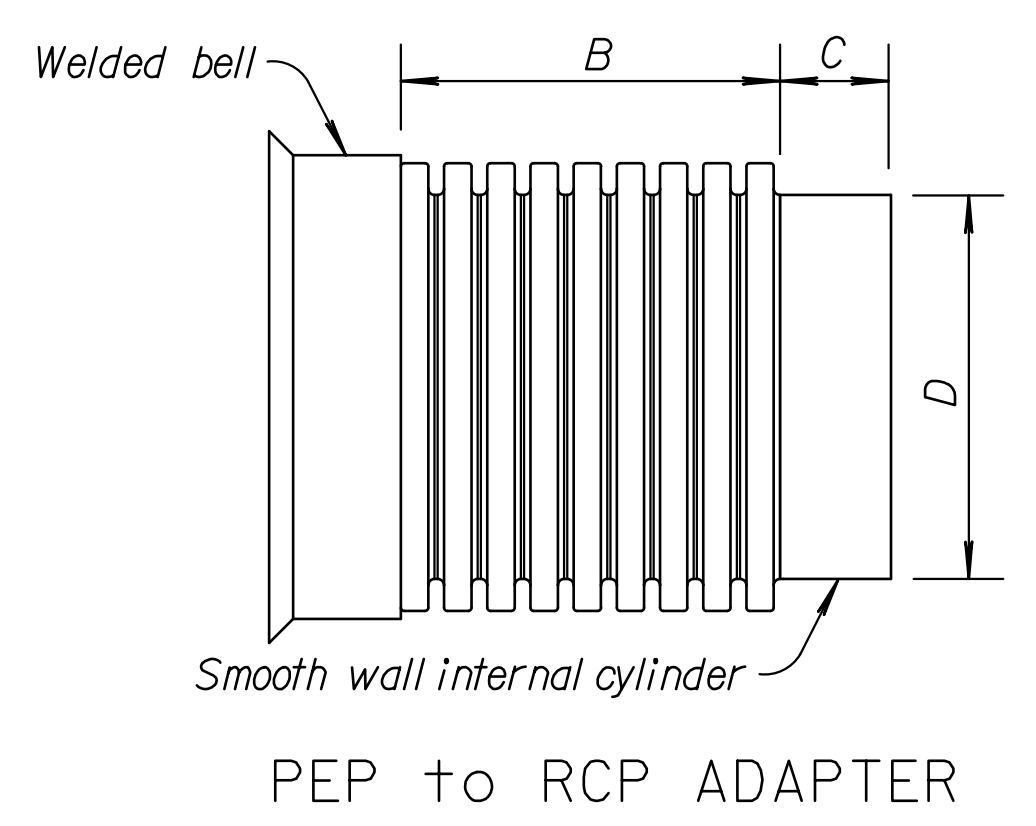
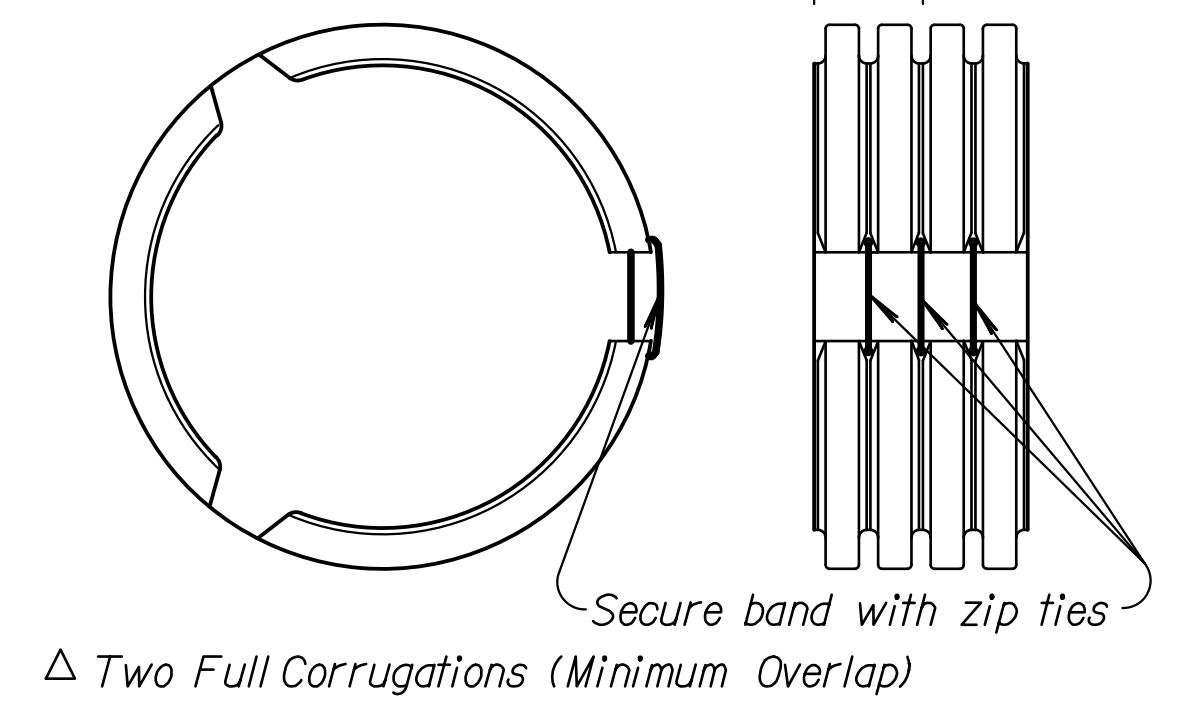
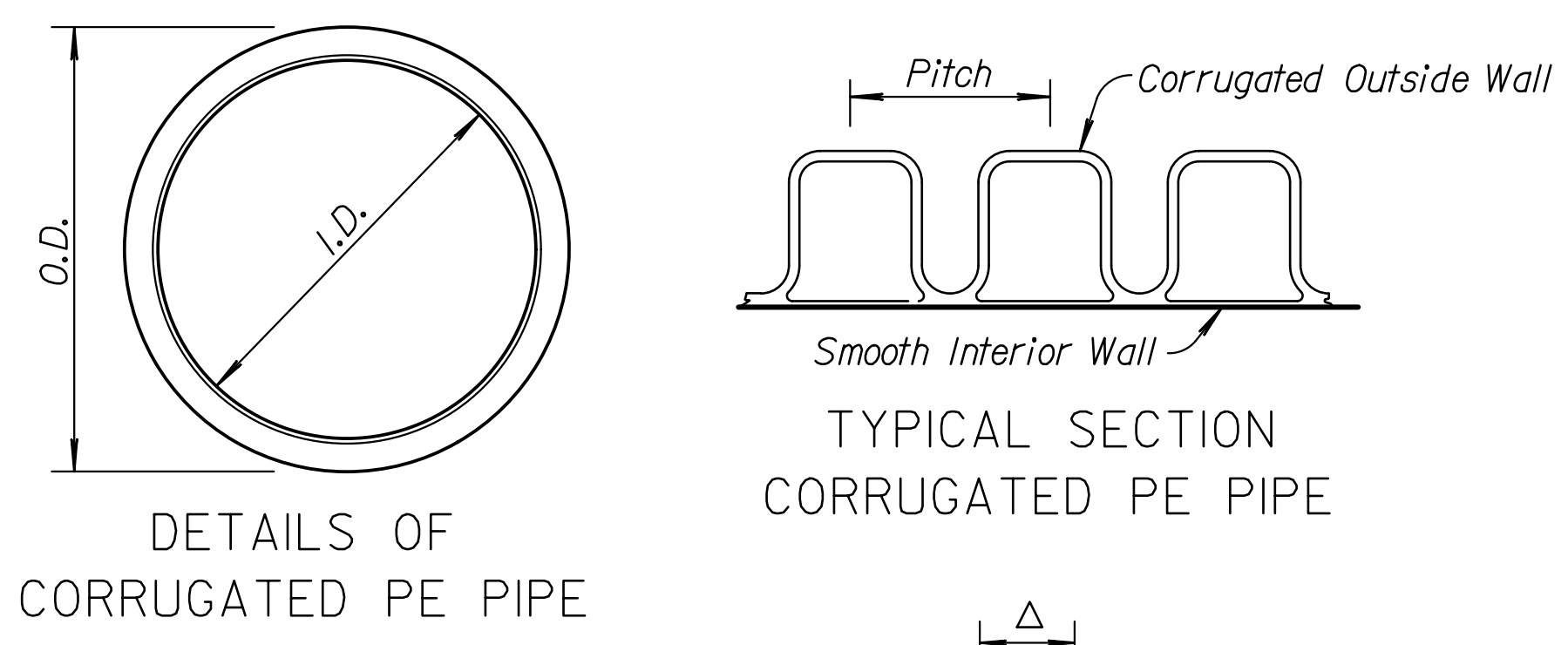
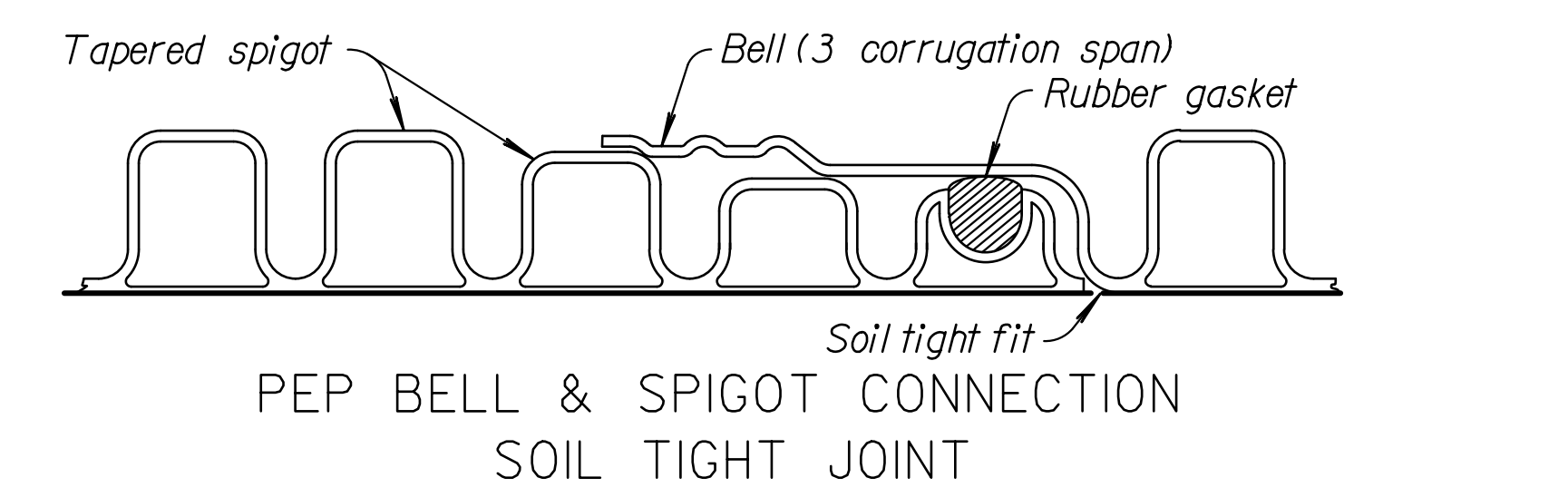
Drawn By: unfiled
 Plotted: 5/26/2017
 File: c:\transys\pw_local\transyscorp-pw\1taurme\hd0228400\rd667.dgn



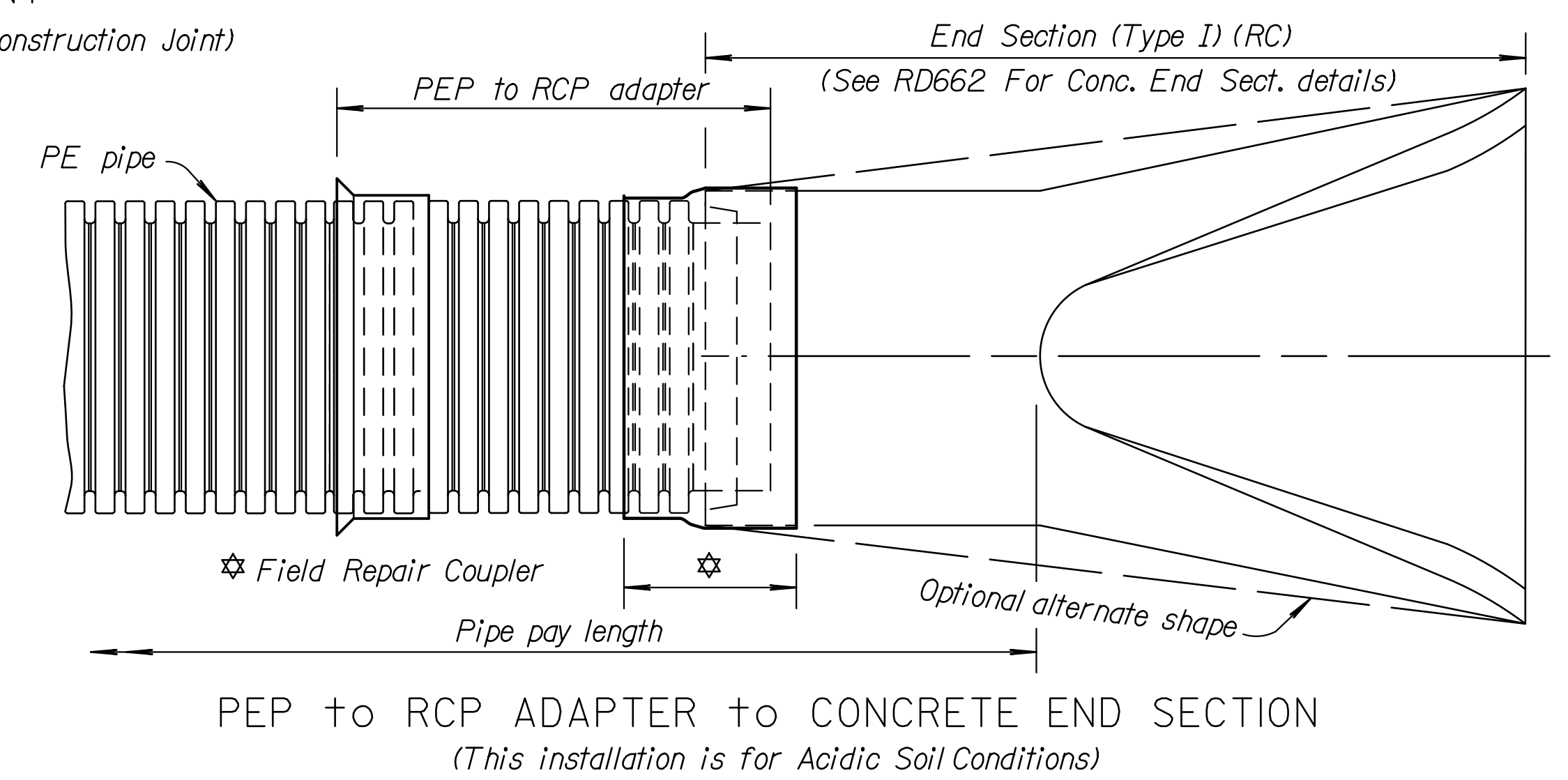
Ⓢ Toe plate extensions where specified, to be punched to match holes in apron lip and bolted with 3/8" dia. bolts. The length of toe plate to be as follows:
 W + 10" for 12" to 30" diameter pipe inclusive.
 W + 20" for 36" to 60" diameter pipe inclusive.



TAPERED SLEEVE FOR ATTACHING METAL END SECTION TO PE PIPE
(Illustrated with Type 2 Connector)



| Pipe Dia. (In.) | B | C | D |
|-----------------|----------|----|---------|
| 18" | 18 1/4" | 6" | 18" |
| 24" | 25" | 6" | 24" |
| 30" | 32 3/16" | 6" | 30" |
| 36" | 36 3/4" | 6" | 36" |
| 42" | 36" | 6" | 41 1/4" |
| 48" | 36 3/4" | 6" | 41 1/4" |
| 60" | 36" | 6" | 59" |



| Pipe Dia. (In.) | Min. Gauge Ends | Dimensions in Inches | | | | | Slope |
|-----------------|-----------------|----------------------|----------|----------|-----------|----------|---------|
| | | A (min.) | B (max.) | H (min.) | L (+/-2") | W (min.) | |
| 12" | 16 | 6 | 7 | 6 | 21 | 24 | 2 1/2:1 |
| 15" | 16 | 7 | 8 | 6 | 26 | 30 | 2 1/2:1 |
| 18" | 16 | 8 | 10 | 6 | 31 | 36 | 2 1/2:1 |
| 21" | 16 | 9 | 12 | 6 | 36 | 42 | 2 1/2:1 |
| 24" | 16 | 10 | 13 | 6 | 41 | 48 | 2 1/2:1 |
| 30" | 14 | 12 | 16 | 8 | 51 | 60 | 2 1/2:1 |
| 36" | 14 | 14 | 19 | 9 | 60 | 72 | 2 1/2:1 |
| 42" | 12 | 16 | 25 | 11 | 69 | 84 | 2 1/2:1 |
| 48" | 12 | 18 | 29 | 12 | 78 | 90 | 2 1/4:1 |
| 54" | 12 | 18 | 33 | 12 | 84 | 102 | 2 1/4:1 |
| 60" | 12/10 | 18 | 36 | 12 | 87 | 114 | 2:1 |

GENERAL NOTES
 The culvert type shall meet the KDOT Pipe Policy & Standard Specifications.
 The size of pipe designated on the plan shall be the nominal inside diameter of a two wall corrugated PE pipe (Type S).
 PE pipe couplings shall be designed to cover at least two full corrugations on each side of a joint.
 No additional payment shall be made for any gain in length due to the fit of the pipe at connections.
 All corrugated PE pipe, end sections, couplings, and fittings shall conform with the Standard Specifications.
 See Standard Specifications for PE Pipe bedding and backfill.
 Multiple panel end sections shall have lap seams which are to be tightly joined by bolts & nuts. Corner plate and toe plate to be same gauge and material as end section. When required optional toe plate extension shall be overall width less 6" x 8" high.
 Attachment to PE pipe 12" diameter and up shall be made with Type 2 Connector.
 All work and materials required for construction and installation of end section shall be included in the bid item "End Section".

| NO. | DATE | REVISIONS | BY | APP'D |
|-----|--------|--------------------------------|-------|-------|
| 1 | 2-8-08 | Added ref. to KDOT pipe policy | S.W.K | J.O.B |

KANSAS DEPARTMENT OF TRANSPORTATION
METAL/CONCRETE END SECTION (TYPE I) for PE PIPE
 RD667
 FHWA APPROVAL 6-27-08 APP'D. James O. Brewer
 DESIGNED QUANTITIES TRACED Bowser
 DESIGN CK. DETAIL CK. QUAN.CK. TRACE CK. King