

CONSULTANTS:

143RD STREET IMPROVEMENTS

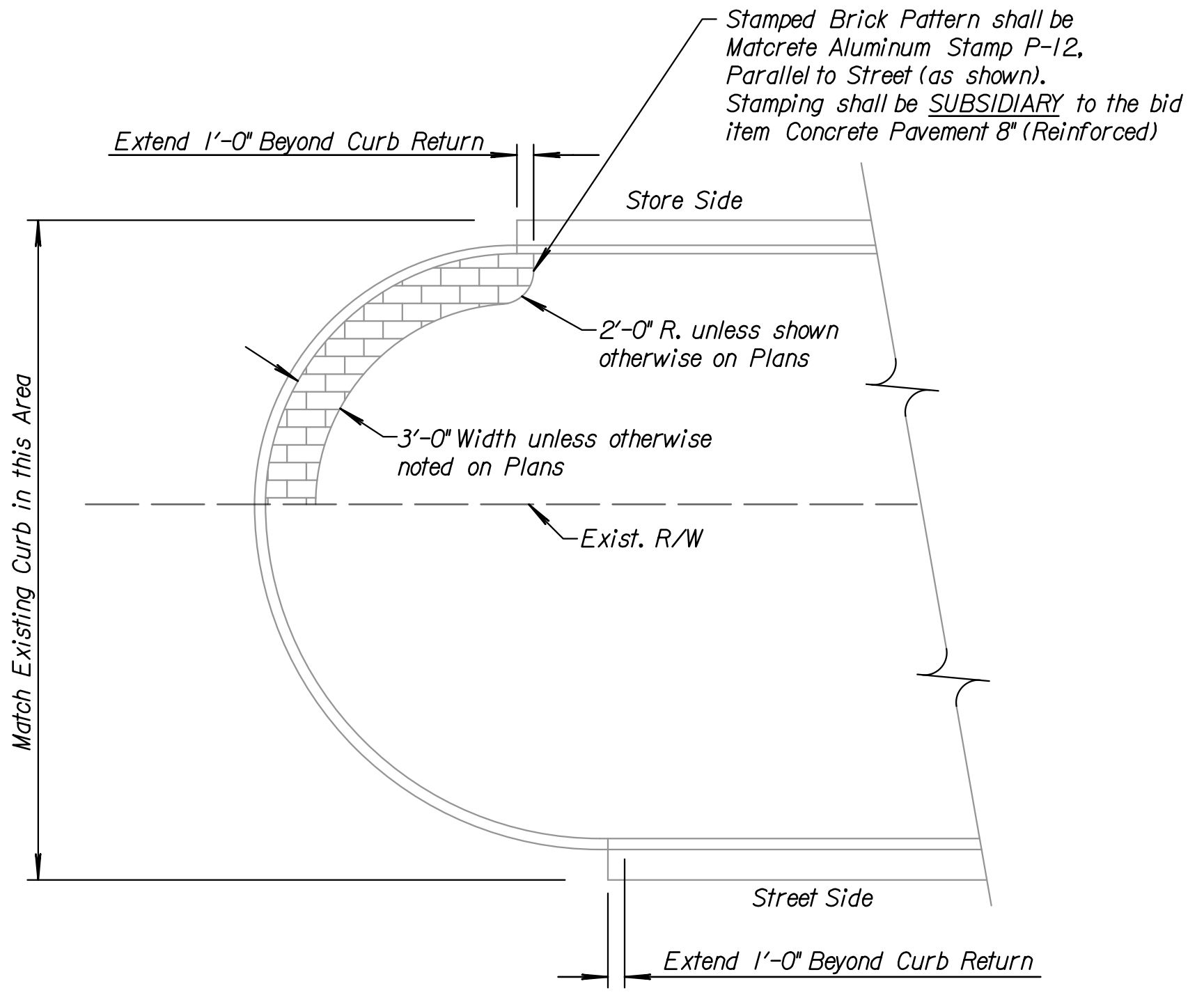


REVISIONS:	MARK	DATE	DESCRIPTION

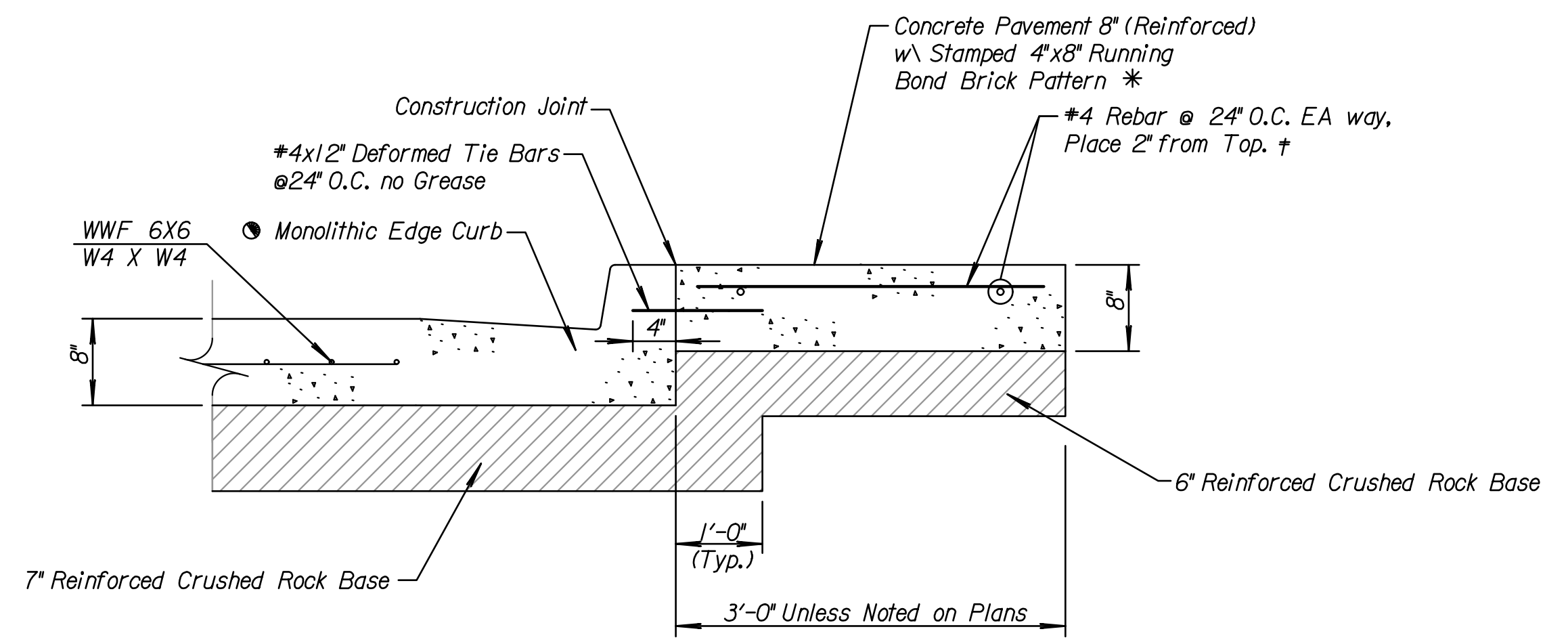
PROJ NO: 87 N-0614-01
 SCALE: N/A
 DATE: 5/26/2017
 DESIGNED BY: TAU
 DRAWN BY: TAU
 CHECKED BY: MDB

SHEET TITLE:
DETAILS FOR QUICK TRIP ENTRANCE

SHEET NO.
62
 SHEET 62 OF 236



RADIUS PROTECTOR PLAN



STANDARD DRIVE & RADIUS PROTECTOR SECTION

- Monolithic edge curb shall be SUBSIDIARY to bid item "Concrete Driveway 8"
- * Stamping is SUBSIDIARY to bid item "Concrete Pavement 8" (Reinforced)"
- † Reinforcing SUBSIDIARY to bid item "Concrete Pavement 8" (Reinforced)"

Note:
 Concrete Pavement shall be 8" uniform thickness unless shown otherwise on the plans.
 The City of Wichita shall not replace the Stamped Concrete Pavement 8" (Reinforced) within the existing right-of-way limits.