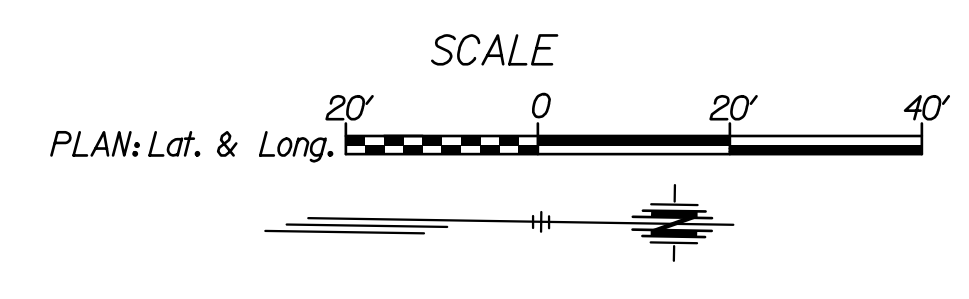
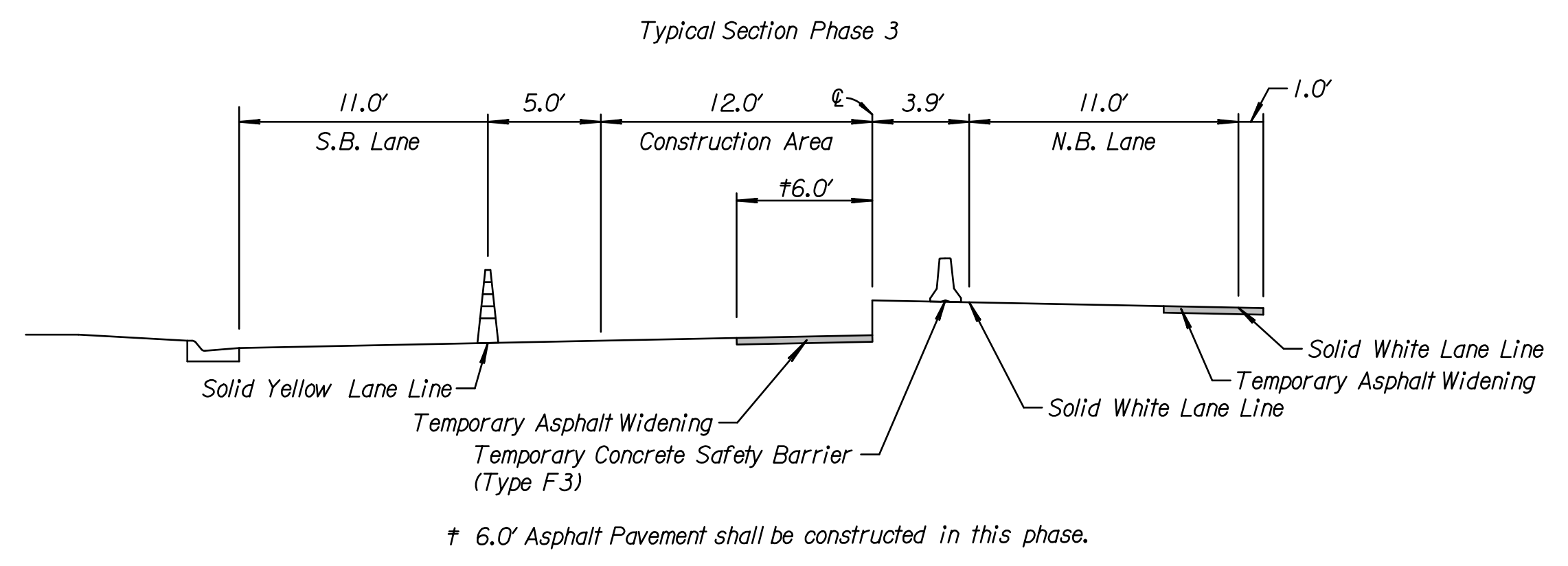
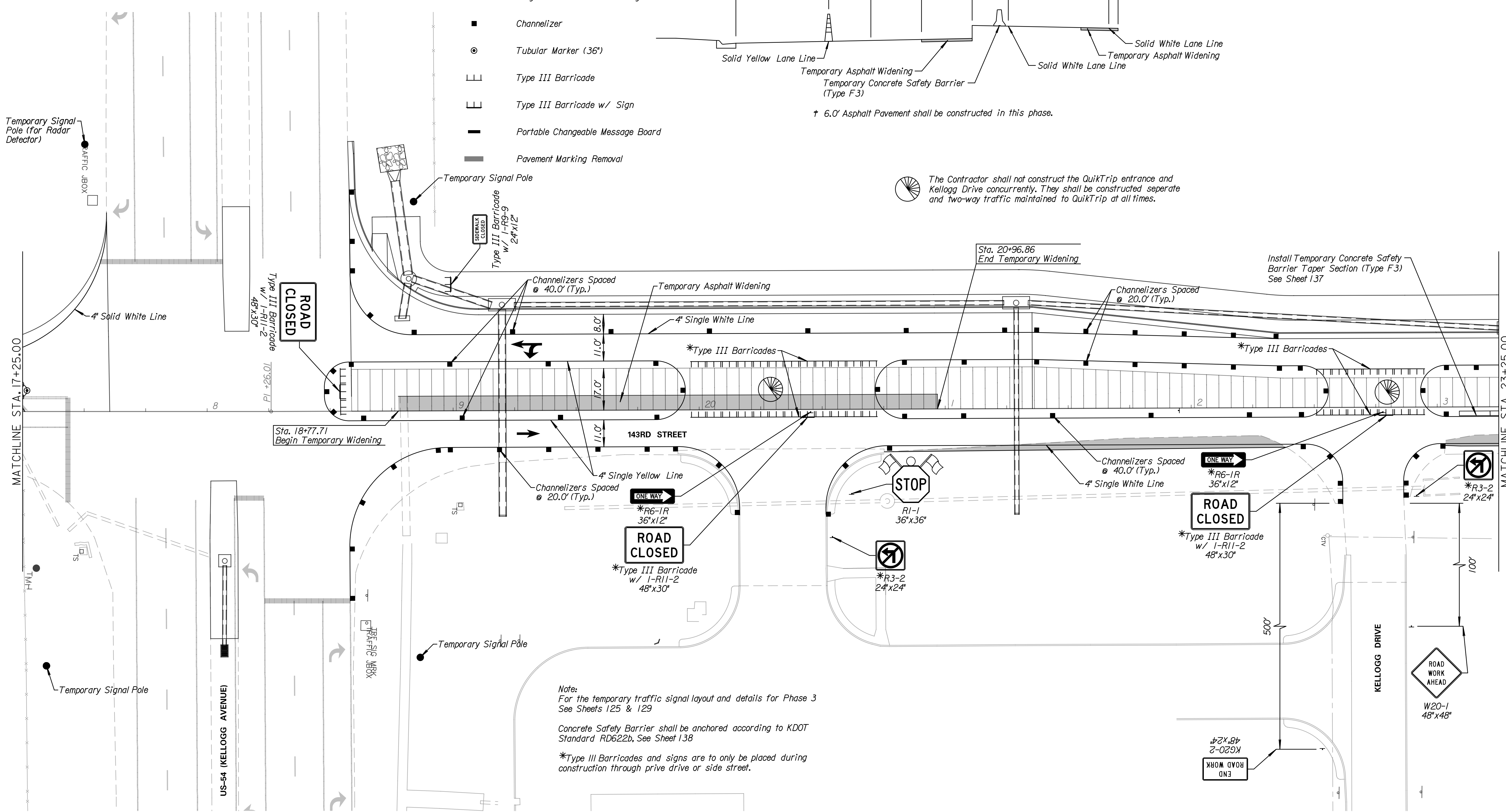


11/21/21 AM c:\transystems\work\local\transystems\work\taumne\228400C-CPP-M01-601a.dgn.DGN
 taumne 5/26/2017

- LEGEND**
- Phase 3
 - Temporary Asphalt Widening
 - Single Post/Skid Mounted Sign
 - Channelizer
 - Tubular Marker (36")
 - Type III Barricade
 - Type III Barricade w/ Sign
 - Portable Changeable Message Board
 - Pavement Marking Removal



The Contractor shall not construct the QuikTrip entrance and Kellogg Drive concurrently. They shall be constructed separate and two-way traffic maintained to QuikTrip at all times.



Note:
 For the temporary traffic signal layout and details for Phase 3 See Sheets 125 & 129

Concrete Safety Barrier shall be anchored according to KDOT Standard RD622b, See Sheet 138

*Type III Barricades and signs are to only be placed during construction through drive or side street.

Tran Systems

245 NORTH WACO
 SUITE 222
 WICHITA, KANSAS 67202
 PHONE: 316-303-3000
 FAX: 316-462-5629

CONSULTANTS:

143RD STREET IMPROVEMENTS

WICHITA, KANSAS

REVISIONS:	MARK	DATE	DESCRIPTION

PROJ NO: 87 N-0614-01
 SCALE: 1"=20'
 DATE: 5/26/2017
 DESIGNED BY: TAU
 DRAWN BY: TAU
 CHECKED BY: MDB

SHEET TITLE:
 143RD STREET IMPROVEMENTS
 TRAFFIC CONTROL
 PHASE 3

SHEET NO.
 94
 SHEET 94 OF 236